

**Local Resident Promoted to VP**

Following the annual stockholders meeting, the Bank of Dearborn announced the promotion of Donald G. Barnett, 28550 Red Leaf lane, Southfield. Barnett was promoted to vice president and auditor. In the banking business for nearly 13 years, he is also a member of the Detroit chapter of the National Association of Bank Auditors and Controllers.

**GARDENING INDOORS**

Why sit and knit while waiting for good outdoor weather for gardening?

Why not explore the vast and simple and simply vast range of beauty, fragrance and fun that is available to you with minimums of space, equipment, patience, materials and money?

1. A 35c tuber and 10c pot will start the magnificent BEGONIA on its way to fruition and many exquisite flowers.
2. One \$1.98 plastic tray, a 15c packet of seeds and a few cents worth of TERRALITE and you are on your way to having several dozen tomato plants.
3. A \$1.98 tray plus a small tray, 2 pieces of wicking and a small wire stand adds up to only \$4.25 yet will help produce a variety of flowers, bulbs, vegetables and foliage plants.

This can go on and on depending on your desire and resources. Following are a few things we have for use in this fascinating avocation:—

Starting trays (flats), clay pots and saucers, planting tubs and window boxes, ivy-rings, MOISTRITE seed starter, small plastic greenhouse and—

- |                 |                |
|-----------------|----------------|
| Spray Bulbs     | Leaf Polish    |
| Fertilizers     | Water Cans     |
| Insect Bombs    | Gibrellic Acid |
| Potting Soil    | Peat Moss      |
| Vermiculite     | Charcoal       |
| Soilmoist Gauge | Oasis          |
| Jap. Pebbles    | Markers        |
| Shears          | Cache-Pots     |
| Seeds           | Herb Pots      |
| Bulbs           | Iron Planters  |
| BOOKS           | INSTRUCTIONS   |

Should you try this out we will next comment on Flower Arranging and useful materials Wherewith to do it.

**McCLELLAN-BALL CO.**  
YARD SUPPLIES KENNEL FARM  
GARDEN BIRMINGHAM, MICHIGAN  
Phone MI 4-4133 850 S. Woodward

**BUSINESS BRIEFS**

PHAM ECCENTRIC Page 3-B  
Thursday, February 4, 1960

**Murphy Named Product Manager**

F. James Murphy, 7480 Parkstone Lane, has been named product manager for American Industrial Instruments, Manning, Maxwell & Moore announced.



Murphy

Murphy joined the company in 1949 as a sales engineer. During World War II, Murphy served in the Marine Corps seeing service in Okinawa and China.

He is a member of the Instrument Society of America, the Fluid Controls Institute and the Scientific Apparatus Manufacturers Association.



EDDIE DOWLING

**Eddie Dowling Here Feb. 11 For Lecture**

Eddie Dowling, Broadway actor, producer, director and playwright, will be in Birmingham next Thursday, Feb. 11, to lecture in the Holy Name school auditorium at 8:20 p.m. as the third speaker of the Holy Name Church-sponsored Christian culture lecture series.

Although tickets to the four lecture series were sold in a block, a limited number of special tickets are available for Dowling's lecture. Tickets may be secured from Mrs. James F. Murphy, 1319 Dorchester.

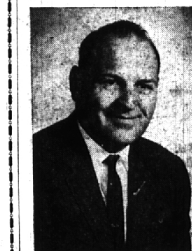
DOWLING, WHO is one of the all-around, all-time greats of the American theatre, has made an outstanding success in all phases of show business. In his lecture next Thursday entitled, "From Shakespeare to Saroyan", he will relate some of his experiences in the theatre.

He made his debut in 1918 in "The Velvet Lady", a Victor Herbert operetta.

He wrote and acted in one of the first talkies, "The Rainbow Man" and was co-author, co-producer and star of "Sally, Irene and Mary," which ran a year on Broadway, two on the road, and was sold to the movies four times, earning over a million dollars for its authors.

IN 1926 he starred in "Honey-moon Lane" a show which introduced Kate Smith, whom Dowling had discovered working as a lady barber in Washington.

Dowling's productions have won four New York Drama Critics' Circle awards and one Pulitzer Prize.



HUNKELE

**New Director**

I. R. Moore, general manager of the Wrigley division of ACF-Wrigley, Inc. announced the promotion of Joseph Hunkele, 26611 Bob White, Southfield, from assistant director of operations to director of services.

In his new position, Hunkele will direct the activities of the produce warehouse and the salvage, garage, maintenance and engineering operations.

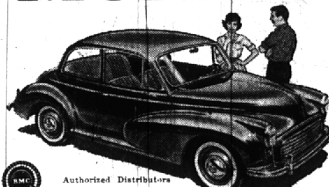
Hunkele started with the company in 1939 as an assistant store manager. Later he served as store manager, store supervisor, superintendent, operations field specialist, grocery field specialist, and most recently, assistant director of operations.



**Greenfield's Food Managers Convene Here**

The Greenfield-Mills restaurants were the first east of California to inaugurate a plan of quality control in food production through the use of graduate dietitians from leading colleges. These women are responsible for flavor control, style and portions of all foods, as well as the development of new food items. Pictured from left to right are: R. Jane Bell, Marion Cremer, Mildred Powell, Mrs. Margaret McArea, Marlene Krause, Patricia Smith, Lillian Reager, Winifred Eliason, JoAnn Heise, Rita Gualandri, Mary Veresh, Sally Ashbacher, Mrs. Elaine Hut-ton and Grace Gabler.

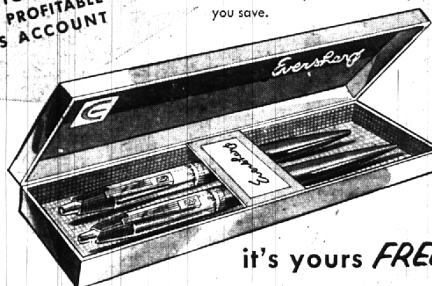
**MOR MOR MOR MORRIS**  
quality per dollar!  
miles per gallon!  
get up and go!



Authorized Distributors for Mr. Morris, Austin, Healy, Jaguar  
**FALVEY**  
From as low as \$1495. F.O.B. MOTOR SALES COMPANY LI 3-5000 22600 Woodward Ferndale

YOU AND YOUR FAMILY ARE INVITED TO THE  
*Opening*  
OF  
**AMERICAN SAVINGS**  
*Beautiful New Branch*  
**IN BLOOMFIELD SHOPPING PLAZA**  
TELEGRAPH ROAD AT MAPLE

**VALUABLE Gift**  
FOR EVERYONE WHO OPENS A PROFITABLE SAVINGS ACCOUNT



it's yours **FREE!**

**EVERSHARP "His and Hers" PEN SET**

American Savings gift to you—this nationally-advertised EVERSHARP Pen Set with man's fine quality ball point pen plus lady's matching pen. Yours FREE when you open a savings account for \$25.00 or more during our Opening Celebration.

**3 1/2%** Current Rate

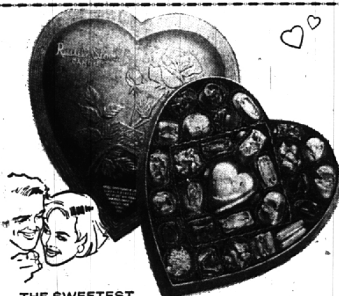
ON ANY AMOUNT

All Savings Insured to \$10,000 By An Agency of the United States Gov't.



TELEGRAPH ROAD AT MAPLE  
in Bloomfield Shopping Plaza  
Open 9:30 to 4:30—Fridays to 8:30 p.m. • Convenient Free Parking  
Also Open Thursday, February 4 to 8:30

8 CONVENIENTLY LOCATED OFFICES  
OVER ONE HUNDRED MILLION DOLLARS IN RESOURCES



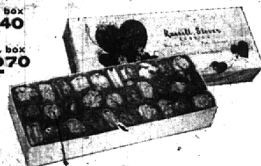
THE SWEETEST WAY TO SAY

"Be My Valentine" **Red Foil Heart** filled with a pound of the finest chocolates \$195  
Other heart boxes 85¢ to \$10.00

*Russell Stover*  
CANDIES

Assorted Chocolates

1 lb. box \$140  
2 lb. box \$270



the finest, freshest candy you can buy... exclusively ours

ORDER NOW

**SHAIN'S REXALL DRUG STORE**  
105 W. MAPLE — BIRMINGHAM  
Phone MI 4-2121