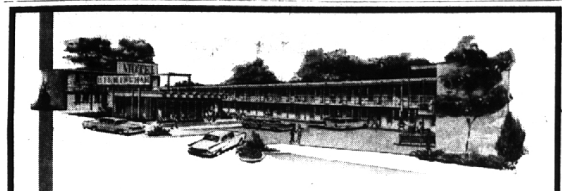
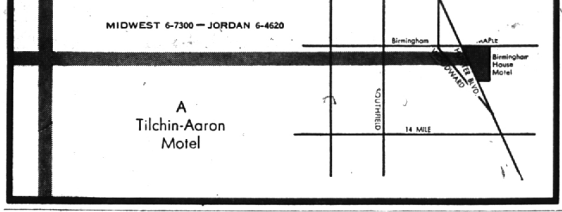


ENJOY  
EACH THURSDAY  
HIMELHOCH'S FASHION SHOW  
beginning 12 noon  
at Greenfield's  
RESTAURANTS  
Birmingham  
725 So. Hunter Blvd.

**DOWN TO EARTH**  
**Ice Rink in Backyard**  
**Means Fun for Family**  
By ALICE WESELS BURLINGAME  
Special Writer for The Birmingham Eccentric



the birmingham house motel  
when visiting the Birmingham-Bloomfield area, the Birmingham House Motel is the place to stay. Complementary continental breakfast is included. weekend guests may have breakfast in their rooms if they so desire.



Christmas time always means new skates for the children—and the Big Boys who like to think they are young again. Here is the prescription for a skating rink in your own backyard. It will assure you lots of fun.  
I phoned Anne Knight over on Winthrop where so many of the neighbors have had experience making ice rinks on their property.  
"The first question, Anne, is: Does it ruin your lawn to put a skating rink on top of the turf?"  
"I know we are particular about our lawn and we do not feel as though it ruins the turf," replied Mrs. Frank Knight.

THE NEXT STEP is for the skaters to pray for lots of snow and a long period of steady cold. A beautiful free form rink was formed by packing up the snow along the profile line. On Winthrop they reported some of the prettiest were formed to include one or two trees. I can visualize how good night lighting with a spotlight or the small Italian lights could really make a fairyland out of the location.

Then "inside the cup" (formed by packing in the snow to form a profile) begin to water the areas with a fine spray. It is one of those jobs which has to be done manually; cloudy days or evening hours when he is the best time for the watering.

At night Frank Knight would allow the water to trickle on another area so the hose would not freeze during the night. You have to realize that the water has to be turned off in the basement to prevent freezing. So you see this is a child-parent project and you will welcome interested future skating neighbors to take their turn at providing a fine spray for the rink. Good Luck.  
I will wave at you as I drive by—our young people are grown up. I could supply the coffee and doughnuts.

"WINTERGREEN" IS one of the Christmas treats Detroiters enjoy at the Detroit Historical Museum. There you will see the caliber of Christmas Show shared by the Birmingham Branch of the National Farm and Garden. Our Birmingham Mrs. Robert VanderPyl had seven entrants and stole the show with awards.

Those who live in the area and follow flower arrangement competition will appreciate the arrangements and know the designers. Mrs. Fred Mueller made a pine door spray with grape sprayed gold. It incorporated stalks of wheat sprayed gold and a large apple green bow to finish the picture.

Mrs. Charles Pollack used a large piece of dove-colored and squirrels peeking out of the knot. Cones and the greens were appropriately sprayed; all used as a door motif.

HERE IS AN IDEA which I won't forget: burlap had been dyed green and frayed so that it looked like pine needles. It was shirred on a round frame. There was a royal purple bow with plenty of glitter on the bow while dark blue balls and sprayed teal weed provided an accent.

Mrs. VanderPyl ended up the occasion with one invitation exhibit, two blue, two red and two third place ribbons. I favored especially her fireplace decorations for a child. On the mantel she had a quaintly framed picture of her mother as a little girl with her Christmas tree and her prize little iron stove and red chair. On the other side of the mantel Mrs. VanderPyl had that same iron stove which is now her treasure.

There was a tiny mouse under the stove and wood blocks spelled: "Not even a mouse." The fireplace had two red Heaman soldiers for andirons and at one side was her mother's red chair as shown in the picture above the fireplace.

Golly, this Show brought you back to a good old fashioned Christmas. Punch and cookies were served. See you there next year.

If you persist in following the driver ahead like a sheep, he may turn out to be a "Judas goat."

A little knowledge can be a dangerous thing, so beware of the driver who knows it all.

**Wilson's**  
OPEN  
EVERY NIGHT  
UNTIL  
10  
featuring  
Birmingham's Most Complete  
Cosmetic Department  
**WILSON DRUG CO.**  
DEPENDABLE PRESCRIPTION SERVICE

**Wanted: Letters**  
**From Lane to Lane**

Memo to Mrs. Lane in Birmingham, England:  
According to our local telephone directory there are nine families with the name of Lane living in our Birmingham.  
In answer to your letter asking if there is a family of the same name here whom you could exchange letters, we are going to list them and their addresses.  
You said in your letter that you read about our Birmingham in your local paper, the Birmingham Mail.

"OUR HOUSE," you wrote, "is in the suburbs of Birmingham, but not everyone here works in the motor industry. My husband works in a silver plate factory and my son is training to be a commercial artist and most women work full or part-time in every kind of job."  
"Your city sounds beautiful, with its Elm and Maple trees, but we too have some lovely tree lined roads."  
You signed your letter: Noah S. Lane, John H. Lane, Paul J. Lane; 418 Beeches Road, Great Barr, Birmingham 22A, England.  
We appreciate your kind remarks about our city. We hope that some of the following Lanes will start now writing letters to you so that an exchange may get

under way. Perhaps only one of them will write, perhaps some, perhaps all.  
ALBERT M. LANE, 2159 E. Maple.  
Carl B. Lane, 480 Bird.  
Carson C. Lane, 1533 Chapin.  
Harold A. Lane, 2107 Windemere.  
John C. Lane, 1678 Maryland.  
John E. Lane, 1870 Latham.  
Joseph W. Lane, 1440 Cole.  
Mrs. Muriel W. Lane, 6345 Sheringham.  
Mrs. Raymond W. Lane, 185 Northlawn.  
If you receive any answers, please let us know.  
—The Editors

**GREEN LAKE**  
**RESTHAVEN, INC.**  
Thinking about a Nursing Home?  
Call for a free booklet on how to select a Nursing Home.  
EMpire 3-4121

**GOLF LESSONS**  
**GOLF PRACTICE**  
9 A.M. to 11 P.M. Daily  
Beautiful new regulation sets  
(9" x 5 1/2")  
IMPROVE YOUR GOLF  
Hot Meals—Liquor—Beer  
OPEN ALL YEAR  
Parties, Dances, Banquets,  
Weddings, Meetings  
ROCHESTER GOLF CLUB  
John R. 20 Mile Road  
UL 2-4800  
GEORGE G. SADOWSKI owner

It's Party Time At Huard's  
OVER  
20 STYLES  
TO CHOOSE  
FROM  
SHOES DYED TO MATCH  
YOUR GOWN FREE  
BROCADES  
SATINS  
FAILLE  
PRINTS  
ALL SIZES  
HIGH and MEDIUM HEELS  
VALUES TO \$34.95  
**12.88** TO **18.88**  
**HUARD'S** SHOE COMPANY  
100 North Woodward MI 7-2509

**Connolly's**  
Two Beautiful Stores  
"The Diamond Shops of Pontiac"  
PREMIERE SHOWING  
Presenting the New  
*Evening Star*  
Collection of DIAMOND RINGS  
by **Artcarved**  
Here for the first time in our exclusive showing—dramatic new Diamond designs, truly contemporary, truly captivating. Come, see the excitement when Diamonds go magically modern. Discover the diamond of your dreams today in the new "EVENING STAR" COLLECTION BY ARTCARVED...  
Different, daringly-designed  
in a refreshing departure from tradition-bound concepts.  
We are proud to present these highly original creations with the fresh, imaginative flowing lines. See how exciting diamond rings can be in our exclusive display.  
Know the facts about Artcarved Diamond Rings. There's no question about the color, clarity or carat weight. It's registered and certified in writing. And so is the value of your Artcarved ring... with a guarantee that lets you apply the full current retail price (less tax) toward a larger one, anytime at any Artcarved Jeweler in the United States. What Better proof?  
NEW LOOK  
*Evening Star* by **Artcarved**  
From \$175.  
We Are Pontiac's Only Registered Jewelers—  
American Gem Society  
Very Convenient Terms can be arranged.  
Open every Shopping night till Christmas.  
MIRACLE MILE — 2203 So. Telegraph Phone 2-8391  
Downtown — 16 W. Huron Phone 2-0294

**4 1/2%** of the Nation's Homes  
FINANCED BY SAVINGS AND LOAN  
FRIENDLY...  
You'll like the neighborly attention you get at American Savings. We enjoy making friends, and we will enjoy serving you...  
SAFE...  
You'll like the pleasant feeling of knowing your savings are insured up to \$10,000 by an agency of the United States Government.  
CONVENIENT...  
There's sure to be an American Savings office a short distance from where you work or live. It's easy to save regularly the American way...  
ALL THIS AND 3 1/2% TOO!  
CURRENT RATE ON ANY AMOUNT  
American Savings accounts grow faster because you earn 3 1/2% and because this higher yield is paid on any amount large or small. Go to the nearest American Savings Branch—open an account today.  
**AMERICAN SAVINGS**  
TELEGRAPH AT MAPLE, Bloomfield Shopping Center  
Main Office: Woodward at Congress Dexter at Cortland W. 9 Mile near Coolidge  
14 Mile near Crooks Rd. in Clawson Livernois at W. 7 Mile  
Fort Street at Military Telegraph at Schoolcraft Van Dyke at E. 7 Mile