

The Birmingham Eccentric
Wednesday, December 21, 1960

Do you, when you make a mistake that involves another person, perhaps causing him or her some irritation, even distress... do you offer suitable apology? To do so, sometimes injures one's pride—yet such "pride", don't you think, is hardly worth supporting? Making proper, sincere apology is appreciated and tends to raise another's esteem for the one who apologizes.

**BIRMINGHAM,
MICHIGAN
SECTION
D**

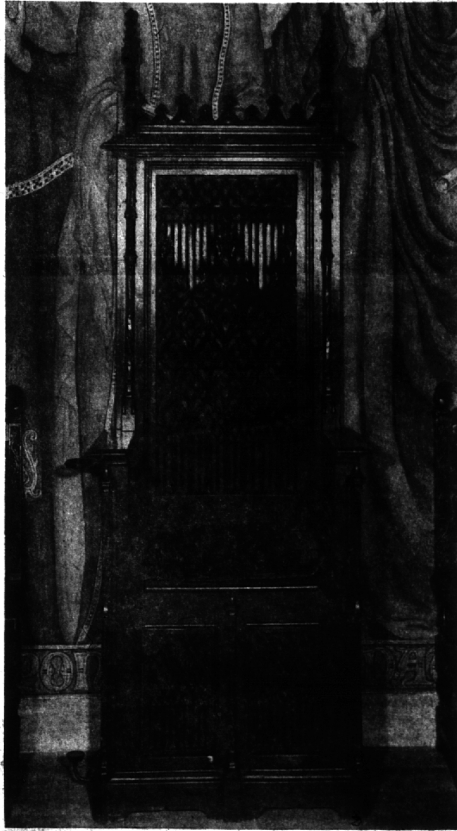
Church's Art Works Hold Yule Message

Photos by
Marv Stasak

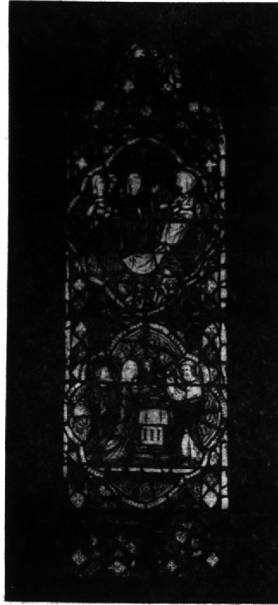
"Noble efforts made through the centuries, which fill the beholder with reverence and wonder... In this way Christ Church Cranbrook's guidebook, describes the joy of viewing objects of religious art such as those pictured here.

They were photographed by The Birmingham Eccentric last week at the Bloomfield Hills church on Lone Pine road. Christ Church Cranbrook was built during the years from 1925 to 1928. Its buildings, along with most of their art treasures and furnishings, plus the church's original endowment, were the gift of the late newspaper giant George G. Booth and Mrs. Booth.

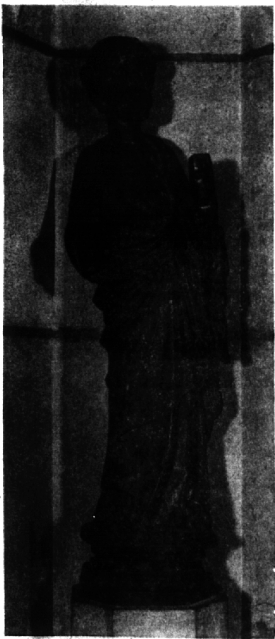
DESCRIBING the church and its works of art, the words of the church's "Pilgrim's Guide" are appropriate at Christmastime. "Each stone and piece of wood," it said, "each handiwork of laborer and artisan and each dream realized by architects and donors speaks of faith in the master Creator and his creation's power to perfect itself. Implicit is the hope that mankind will persist in using the God-given power and unleashed charity which seeks no reward but the joy of doing good."



A 15th century bishop once used this chair, brought to Christ Church Cranbrook from the vicinity of Amiens, France by the Booths. It now rests on the north side of the Sanctuary.

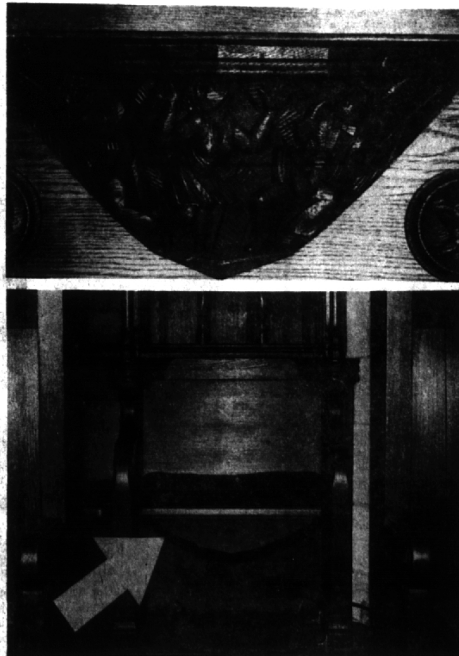


Craftsmen created this window in the 13th century. It was brought to Christ Church Cranbrook from Amiens, France, installed in the west wall of the baptistry. Top medallion pictures the Three Marys at the Tomb. Below it is the Presentation of Christ in the Temple.



**Our Offices
To Close Monday;
Please Get Your
Ad, News Copy in
By 4 p.m. Friday**

At left, the wood sculpture which now occupies a niche in the west end of the Chapel of Paul, was carved by an unknown Frenchman in the 13th century. It depicts St. Paul. At right, above, is a misericord, a relic of days when long periods of praise required priests to stand for exhausting lengths of time. The seat, below, is one of 16 stately stalls at Christ Church Cranbrook. In past centuries, clerics could raise the misericords hinged to the edge of the seats (see arrow, below) and lean on them for partial support. Worshipers remained unaware. Humorous carving on misericord above depicts jazz, was the work of a 20th century craftsman.



State Police Increase Patrols for Holidays

The Michigan State Police, urging all-out motorist-pedestrian co-operation in preventing holiday accidents, will operate increased patrol schedules for the 75-hour Christmas and New Year weekends.

Accented holiday season traffic hazards is the fact that almost twice as many people, 103, were killed in Michigan in the final 16 days last December compared to 53 in the first 15 days. There were 30

deaths during the Christmas period and 36 over New Year's.

Patrol officers will exert every effort to keep accidents to a minimum but the final traffic record will depend on how safety motorists and pedestrians drive and walk, Commissioner Joseph A. Childs emphasized.

FIFTY NATIONAL Guardsmen will assist in six State Police lower Michigan districts while another 50 will help 14 county sheriff departments.

State Police shifts will be lengthened to 10 hours Christmas weekend from noon Friday, Dec. 24, until midnight Monday, Dec. 26, and New Year's from noon Friday, Dec. 30, until midnight Monday, Jan. 2.

Principal patrol emphasis will be on state trunk lines with special attention to high accident areas.

Want ads cannot be accepted after 5 p.m. each Tuesday.

Candy Sales Net Hills Lions \$200

Bloomfield Hills Lions netted \$200 from their sale of Christmas candy last week and at the Maple-Telegraph shopping center. They sold about \$500 worth of candy. Proceeds will be used for Christmas baskets for needy families in the township and for aid to the blind. Some 30 members joined in the sidewalk sale of candy.

IMPORTED CARS
of
Oakland County
"Service Specialists for Imported Cars"
Cor. W. Maple and Orchard Lake Rd.
MA 6-2491

We specialize in the field of
BEAUTIFUL LAMPS
and hand sewn
SILK LAMP SHADES
Please bring your lamp base for correct fitting.
JOHN BEE
BLOOMFIELD PLAZA — TELEGRAPH AT W. MAPLE
Birmingham, Michigan
Mayfair 6-5923

Peace... Prosperity

May the great blessings and inspiration of the Christmas season remain with you throughout the New Year to fill each day with happiness for you and yours.

Please Note . . .
THE WILSON DRUG CO will be closed all day Christmas
to make it possible for our employees to enjoy Christmas with their families.
For Emergency Prescriptions Phone Either
MI 6-6086 or MI 4-5987

WILSON DRUG CO
DEPENDABLE PRESCRIPTION SERVICE
WOODWARD OF MAPLE PHONE MIDWEST 4-5600

Christmas 1960

Perhaps
It's not until late at night
When the last gift
Is wrapped and tied . . .
The tree lights are turned on . . .
The children are asleep,
That the real meaning of Christmas
Comes once again to us.
The holy . . .
The carols . . .
The hustle-bustle . . . and
The gifts
Are but a small part
Of a mysterious Christmas spirit.
A spirit that expresses
The love of God
And mankind . . .
Kindling with the birth
Of a Babe,
A new hope for the future,
and a trust
That His guidance will
Help us find our way to
Peace for men of goodwill.

**MAY THAT LOVE
... HOPE ... AND
TRUST BE YOURS
THIS CHRISTMAS
AND ALWAYS!**

Birmingham Federal Savings
99 W. Maple 8065 W. 12-Mile Rd.
Corner of Pierce Berkeley