



A Last Minute Browse Through Christmas House

A casual browse through one of the country's most unusual stores will provide enjoyment because of the many beautiful objects that one can purchase... garnered from the four corners of the earth.

★ ★ ★

SILVER

Many antique pieces, silver services, chafing dishes, casseroles, platters, trays, pitchers, dip dishes, etc.

★ ★ ★

COSTUME JEWELRY AND MARY CHESS COSMETICS

for your loved one in beautiful gift packages.

★ ★ ★

LEATHER

Waste baskets, desk sets, wallets, scissor sets, engagement pads, valet boxes, etc.

★ ★ ★

BAR ACCESSORIES

Decorated hi-ball and suburban old fashion glasses, "say when" bottles, decanters, martini and chilli pitchers.

★ ★ ★

TELEVISION TABLES

The greatest ever. Three inches higher than usual, can be used over the lap. Beaded edge prevents spilling. Blonde, Mahogany. Set of four and stand \$31.50.

★ ★ ★

STAINLESS STEEL

Genese, Fraser, and Lyons

★ ★ ★

PEWTER

from Holland and America. Tea and coffee sets and many accessory pieces.

★ ★ ★

LAMPS

Table and floor lamps.

★ ★ ★

STATIONERY

in beautiful gift boxes. Plain and in tints. Nothing is more useful for men and women. \$1.00 to \$7.50 a box.

★ ★ ★

NEED A WASTE BASKET?

Replace the old one that has seen its best days... Beautiful pastels, prints, brass and leather to choose from.

★ ★ ★

BOOKS

of all kinds for adults and children. "Birmingham's First Book Shop".

La Belles
Books, Gifts
Stationery - Engraving
137 W. Maple
STORE HOURS:
9 A.M. - 5:30 P.M. DAILY

Pembroke School's Mrs. Tyson Named 'Teacher of the Semester'

The Birmingham Education Association has designed a new and more meaningful way of honoring its outstanding teachers.

Each school semester a teacher, who meets the requirements of 10 years service with Birmingham schools, excellence in his field and enthusiastic participation in school, professional and community affairs, will be selected by the association's executive board as "Teacher of the Semester".

The first to receive this honor is Dena Hallock Tyson, 601 1/2 St. Bham, kindergarten teacher at Pembroke school.

HER UNDERSTANDING and warmth with small children whether in the classroom or during Sunday school classes at the First Presbyterian church where she provides piano accompaniment, and a deep affection for the Birmingham community have marked her career.

Mrs. Tyson has completely devoted her talents to assisting local children in making the difficult transition from home life to school life. Her abilities have started hundreds on a smooth and happy school career.

A one-room country school, West Maple, at Wine Lake was Mrs. Tyson's first teaching location where she worked with children in all elementary grades.

EXCEPT FOR A brief period with the Battle Creek schools, Mrs. Tyson has taught in the Birmingham system during most of her career. Prior to her current assignment at Pembroke she taught kindergarten at the Barnum, Pierce and Adams schools.

In remarking upon her career in the teaching profession, Mrs. Tyson claims "My greatest satisfaction from years of teaching is to have remained in this community and watched the former pupils mature and develop into responsible citizens."

"MANY OF THESE people are now working in professions, in industry, and in other positions where they are constructively serving society. Many are excellent



MRS. TYSON

homemakers, and having taught some of their children. I know that they, too, are serving society well. I like to feel that perhaps have given some little contribution to this success," she said.

Mrs. Tyson was a student in Birmingham schools herself and after graduating, attended what was Michigan State Normal College for two years where she secured a teaching certificate. In the following years she earned a bachelor degree at Wayne State University and a master degree at the University of Michigan.

Mrs. Tyson has been active with the Association for Childhood Education for several years and is one of the chapter founders and former president of the South Oakland County A. C. E. she has demonstrated a continuing leadership.

MRS. TYSON HAS also held positions of vice president and secretary in the Birmingham Teachers' Club (now Birmingham Education Association).

Her guidance of the student teachers assigned to her in the last five years has been invaluable to these fledglings.

Wilson's OPEN EVERY NIGHT UNTIL 10

featuring Birmingham's Most Complete Cosmetic Department
WILSON DRUG CO.
1550 Broadway
Also Grosse Pointe, Birmingham

Christmas Fur Sale

Our entire collection of magnificent new Stoles, Boleros, Jackets and Coats at impressive reductions.

Furs by Robert
1550 Broadway
Also Grosse Pointe, Birmingham

Christmas calls for Something Special

Pontiac Pottery

North End Miracle Mile Shopping Center on Telegraph Road
Just a few of over 300 open stock Dinnerware patterns — giving top selection and priced to give top value.

- SELTMAN
- NORITAKE
- KASUGA
- NARUMI
- JACKSON
- MEITO
- VERNON

Royal Doulton



METLOX POPPYTRAIL



BLUE PROVINCIAL
A rhapsody in provincial pieces similar to early American folk art.
Blue Provincial 16 Piece Set \$16.95
6 other Metlox patterns also available

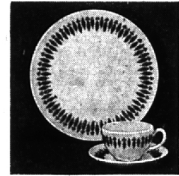
7 ROYAL DOULTON PATTERNS
5-Piece Place Settings
\$9.95 to \$14.95

FRANCISCAN



TWICE NICE
16 Piece Set Service for Four \$13.95
45 Piece Set Service for Eight \$49.95

SYRACUSE CHINA



Nordic Pattern
Carefree * TRUE CHINA SYRACUSE
Nordic 16 Piece Set \$25.95
3 other Carefree patterns available



WINDEMERE
Delicate Pink and Blue
64 Piece Set Service for Eight \$29.95

FRANCISCAN



FFAM-14... DEL MAR
Eight Franciscan casual china patterns available at above prices. Guaranteed against breakage for 1 year.

Pontiac Pottery

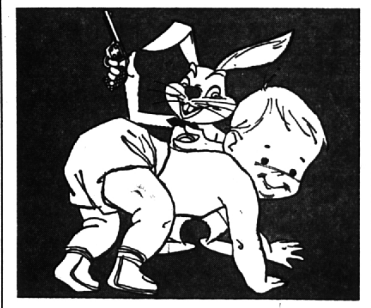
Michigan's Largest Dinnerware Specialty Store

Open Daily and Sundays
10 A.M. to 8 P.M.

NORTH END OF MIRACLE MILE SHOPPING CENTER ON TELEGRAPH ROAD

Telephone FE 2-8642

Shop Late
Open Every Evening
UNTIL CHRISTMAS
Johnbee
in Bloomfield Plaza
W. Maple at Telegraph
MA 6-5933



WE WILL BRING HIS SHOES TO YOU!

Another outstanding service brought to you by the store that is built on service!

1. If your child is two or younger,
2. If you are tied down and can't get out,

THEN Give us a CALL! WE WILL HAVE A SPECIALLY TRAINED SHOE FITTER ON HIS WAY TO YOU IN A JIFFY!

We carry only the finest brands! Simplex Flexies and Jumping Jacks. We are proud to give you this EXTRA service at NO EXTRA COST! Give us a call, we're anxious to serve!



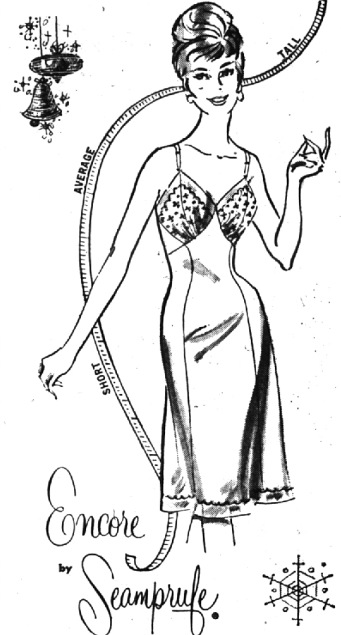
Orthopedic Fitting A Specialty
Open Friday Evenings 7-11 9

ON-THE-PLAZA
Bloomfield Shopping Plaza
6558 Telegraph at Maple Rd.
MA 6-2566



142 W. Maple — Birmingham

Branches in Royal Oak — Ferndale — Mt. Clemens



the nylon triclot slip that has everything she's been asking for

MARVELOUS GIFT IDEA AT ONLY \$3.98

Here's the giftiest, niftiest slip around with its embroidered trim and hand-detailed look. Short, tall, average lengths in sizes 32-42. White, black, navy, pink.



WOOL JERSEY DRESSES TO SPIKE YOUR HOLIDAY WARDROBE

and only \$11 Reg. to \$17.98

This is exactly what you're looking for... that extra dress to see you through the busy days ahead. Trim, slim and smart in black and all the gay holiday colors. Misses and junior sizes. Illustrated, only one of a collection.

