

In Oakland County . . . Oakland Democrats Eye Federal Appointments

Oakland county Democrats are hopeful of national appointments by the Kennedy administration, it was disclosed this week.

Said James M. Ginn, Southfield county Democrat chairman:

"Several individuals have talked with me about appointments. They have expressed general interest rather than specific interest, mainly because no one is sure yet what will be available."

George J. Fulkeron reportedly is seeking appointment as U.S. district attorney in Detroit, the job now held by Republican George E. Woods, Huntington Woods.

Fulkeron was unsuccessful in his campaign for county prosecutor in the Nov. 8 election.

County Denies Welfare Charge By Detroit

"Perfectly ridiculous," said John A. Macdonald, chairman of the Oakland county social welfare board, of charges that county welfare officials were shunting clients from the welfare rolls.

Detroit Welfare director Daniel J. Ryan accused county officials of shunting state law by encouraging former clients to move to Detroit and get on their welfare rolls. Ryan called for a state prosecutor Samuel H. Olson to prosecute the Oakland officials.

Olson said he had set Dec. 7 for a meeting of welfare officials at his office. Macdonald indicated someone, probably George H. Burt, department director and prosecutor George F. Taylor would attend.

Muscular Dystrophy Drive Collects \$21,997 in Area

Mrs. Helen Martin of Troy, general chairman of the annual house-to-house Muscular Dystrophy drive, reports that \$21,997 has been collected in ten South Oakland cities.

Figures are incomplete in many cities where solicitation was not completed because of the weather. In Madison Heights, where the drive did not receive the sanction of the city council, workers collected about \$50 more than a year

Expert Warns Auto Owners Against Winter

More than two million calls for emergency road service will be sent out by stranded Michigan motorists during the next four months, Automobile club of Michigan predicted today.

This represents more than half the annual total of breakdowns, according to Robert C. Nishel, A&P club road service manager, who urged car owners to take special winterizing precautions.

"Despite his pessimism on past experience, the A&P club road service expert said that 75 percent

B'ham School Building Needs Survey Nearing Completion

Gathering information for the school building needs survey is nearly completed, according to Dr. Otto M. Diekel, superintendent of Birmingham schools.

"In the extensive undertaking," stated Diekel, "we have enjoyed the most helpful cooperation of our staff and of the public officials in the community which comprise our school district."

"We feel confident that the district will benefit for many years to come from the sounder decisions to be made possible by the analysis of this information and from the resulting recommendations."

THE SURVEY was approved by the board of education at its October meeting. Analysis of the data

and recommendations to the board will be made by the bureau of educational research and service, Ohio State university.

"Rising enrollments and changing community growth patterns necessitate major decisions on school building in the spring," stated Diekel.

"It's just fortunate to have found the help we needed, when we needed it," said Diekel.

A WIDE variety of information about the district is needed in a survey of this type.

Some items include present population and future forecasts, housing developments, the proposed educational program, class schedules, class sizes and distribution of public and non-public school pupils for the past 10 years.

Also entrance age, pre-school census, total number of dwelling units in the district, the number of dwelling units constructed in the district in the past 10 years and extensive information about present school buildings.

In addition, community use of buildings, extensive financial information, zoning information, a series of spot maps locating each pupil in the district and any and all information about factors which may influence population growth and characteristics in the future.

AN ATTEMPT will be made to estimate the school population

when the fund in the district is completely built up. This will provide the board and administration with some guidelines for long-range planning as well, Diekel said.

Some decisions to be faced by the board in the spring include:

1. How can the pupils now being based from Walnut Lake and Bloomfield Village schools best be provided for?
2. Is the construction of Westchester school, already approved by the voters, a wise move at the time or would additions elsewhere be more sound?
3. When enrollments at Groves Junior-senior high exceed designed capacity in 1961-

62 with the addition of the twelfth grade, should the planned addition then be built or should a separate junior high school be built, or should both Groves and Seaborn become Junior-senior high schools?

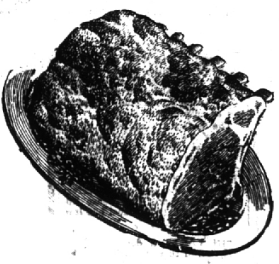
WHEN VIEWING the possibility of just short-range problems, it becomes imperative that best possible assistance be sought. Before we ask our community to commit itself to a solution," concluded Diekel.

B'ham Exchange Club Elects New Officers

The Exchange club of Birmingham elected its officers and board of control members for the coming year last week. Bob Owen was elected president; Harlan Ritter, first vice president; Dave Falvey, second vice president; and George Scott, secretary-treasurer.

Elected to the board of control were John Townsend, Bob Thorpe, Bill Wisland, Harry Aiken, Dick Wilson and Andy Bull.

Big bargains at small costs—that's what you get from the hundreds of classified ads which appear each week in your Birmingham Eccentric.



"SUPER-RIGHT" QUALITY

Pork Loins

FULL 7-RIB PORTION

29¢

LB.

- ### HALIBUT STEAK
- LB. 39¢
- Fresh Dressed Herring . . . LB. 33¢
- Fresh Dressed Smelt . . . LB. 19¢
- Medium Size Shrimp . . . LB. 69¢
- Fillets, HIGHER COD OR OCEAN PERCH . . . LB. 39¢

CENTER CUT

Pork Chops

LB. 79¢

Polish Sausage

"SUPER-RIGHT" 49¢ LB.

Pork Tenderloins

"SUPER-RIGHT" 79¢ LB.

ALLGOOD BRAND—A&P'S FINE QUALITY

Sliced Bacon

1-LB. PKG. 43¢

"SUPER-RIGHT" Fancy Sliced Bacon . . . 1-LB. PKG. 49¢

"SUPER-RIGHT" COUNTRY STYLE Thick-Sliced Bacon . . . 2 LB. PKG. 97¢

SOLID, CRISP, FRESH HEADS

Lettuce

24 SIZE 10¢

Apples Michigan Jonathan 4 LB. BAG 55¢

Cauliflower SNOW WHITE EACH 39¢

Brussels Sprouts . . . QT. BOX 29¢

Granberries OCEAN SPRAY BRAND 1-LB. BAG 25¢

Seedless Grapefruit FLORIDA MARSH OR RUBY RED 8 LB. BAG 69¢

SPECIAL THIS WEEK!

A&P's Fine Quality Salad and Cooking Oil

dexola

7¢ OFF LABEL QUART BOTTLE 45¢

A&P BRAND—HALVES OR SLICED

Cling Peaches

4 29-OZ. CANS 99¢

KRAFT'S—WITH CHEESE

Macaroni Dinner

3 7 1/2-OZ. PKGS. 49¢

SAVE 16¢—JANE PARKER PIE-OF-THE-WEEK

Apple Pie

8-INCH SIZE 39¢

SAVE UP TO 6¢ A DOZEN—JANE PARKER

Donuts

GOLDEN, SUGARED OR CINNAMON . . . PKG. OF 12 19¢

Potato Bread JANE PARKER TRY IT TOASTED . . . 2 1-LB. LOAVES 35¢

Pecan Fudge Bar DAN'S Food Store, Soave 10¢

Fruit Cakes JANE PARKER FIVE SIZES AVAILABLE . . . Light Cake 3.99

- ### Tomato Soup
- ANN PAGE OR CAMPBELL'S . . . 10 1/2-OZ. CAN 10¢
- ### Del Monte Catsup
- 14-OZ. BTL. 69¢
- ### A&P Cherries
- RED, SOUR PITTED . . . 2 16-OZ. CANS 39¢
- ### Libby's Chili
- WITH BEANS . . . 24-OZ. CAN 39¢

- ### Muffin Mix
- DUNCAN HINES WILD BLUEBERRY . . . 13 1/2-OZ. PKG. 41¢
- ### Cake Mixes
- DUNCAN HINES EARLY AMERICAN Applesauce-Butter, Pecan, Fudge Nut 14-OZ. PKG. 39¢
- ### Keyko Margarine
- 3¢ OFF LABEL . . . 4 1-LB. CANS 79¢
- ### Sandwich Spread
- SHEDD'S . . . 16-OZ. JAR 33¢

FROZEN FOOD BUYS

A&P BRAND—OUR FINEST QUALITY

Sweet Peas

4 10-OZ. PKGS. 69¢

A&P Spinach

CHOPPED OR LEAF . . . 2 10-OZ. PKGS. 29¢

A&P Cut Corn

. 2 PKGS. 39¢

Libby's Yellow Squash

. 12-OZ. PKG. 10¢

BANQUET'S NEW Cook-in-Bag

CREAMED CHICKEN BEEF IN GRAVY SLICED TURKEY 4 5-OZ. BAGS 99¢

SEWING SURPRISE HERE

WITH SOMETHING FROM SINGER!

Even if you don't know a bobbin from a blind stitch our sales people know just how to help you fit your budget and your problem with a SINGER solution. They've been doing it for years! Just tell us:

- Who gets the surprise
- What you plan to spend
- When you'd like delivery. Here's what we do:
- Suggest the SINGER Model that fits your needs
- Arrange convenient budget terms, as desired
- Gift wrap and deliver per your instructions. Come see us today!

FINANCING: \$59.90

FREE START UP . . . \$19.90

Also a complete line of Singer Cleaners and Floor Polishers.

SINGER SEWING CENTER

HEADQUARTERS FOR ALL YOUR SEWING AND FLOR CARE NEEDS

323 E-MAPLE - MI 4-0050

OPEN EVENINGS - 5:30 TO 9:00

A&P Super Markets

AMERICA'S DEPENDABLE FOOD MARKET SINCE 1859

Remove Stains Comet Cleanser 2 14-Oz. Cans 31c	Best Soap Zest Soap 2 Bars 43c	Regular Size Zest Soap 2 For Only 29c	Mild, Gentle Liquid Ivory 12-Oz. Size 37c 22-Oz. Size 65c 22-Oz. Size . . . 93c	Household Cleaner Mr. Clean 28 oz. bottle 69c Reg. 15-Oz. Size 39c	For the Laundry Liquid Wisk 32 oz. size 69c 16-Oz. Size 38c	For All Your Washables Lux Liquid 7¢ Off 22-Oz. Size 58c 12-Oz. Size 37c	White or Pink Lifebuoy Soap 4 Bar, Cakes 45c
--	--------------------------------------	---	---	---	--	---	--

555 Adams: Open 9-9 Mon.-Fri.—Sat. 8-9
210 South Woodward: Open 8-6 Mon., Tues., Wed. & Sat. 8-9 Thurs. & Fri. Closed Sundays As Usual