



'Gosh, a Gazebo'

FRANKLIN—If you've never seen a gazebo you're seeing one now—a miniature. Franklin Village Players principals in "The Gazebo," John Baker and Mrs. John McLean, examine it while director Don Odle (left) and supporting actor Don Hacker gets a bird's eye view. The wooden model is an important prop in the Alec Coppel mystery-comedy opening Friday night in the remodeled Farmington Players Barn on 12 Mile road. The show runs three concurrent nights, Dec. 1, 2 and 3 ending with a cast party following the Saturday performance.



Wood Creek Plans Annual Yule Party

WOOD CREEK FARMS—Wood Creekers marshal in the holiday season on a festive note this Friday night. The annual Christmas dance, sponsored by the men of the Wood Creek civic association, will be held at the Birmingham country club. Dance chairman Edward Garden extends an invitation to Wood Creek's friends in Franklin to join them in this jewel of a Yule party.

FRANKLIN—The Richard Probits of Normandy took advantage of the good traveling weather and spent Thanksgiving in Rochester, N. Y. Films of Probit's sister's recent trip to Europe were dialed up with the traditional tar-

After a very busy fall of automobile shows, the Arch Deays of 13 Mile road took a trip "down home" to New Hampshire last weekend. White Chapel, N. C. beckoned the Dr. and Mrs. Gerald Wright of Normandy road for Thanksgiving. It was worth the trip to see their daughter's bouncing family.

Franklin's council held a pre-Thanksgiving dinner to honor retiring colleague William Worcester, leaving this area for a new post in Chicago. Warmly expressing their appreciation for Worcester's effective tenure as councilman for better-than-three years, the council and their wives convened for dinner at Rosemond Hills Inn last Monday night.

Helpful hipts department passes on this idea for making a surprise party a success. Just have the party several months after the date of the occasion.

At least, this is how the Oliver Garwoods of Balsam lane were able to surprise the James Washburnes of 13 Mile road, who quietly celebrated their 23rd wedding anniversary some months ago. The Garwoods simply post-dated the silver event and caught the Washburnes quite unaware.

Troop B-11 boy scouts will be anxiously hoping for good weather again this weekend as they head for a campout at the Waterloo recreation area, Saturday morning.

The George Hoffmans of Drummond court spent the long weekend in Philadelphia, seeing the Army-Navy game and rooting for

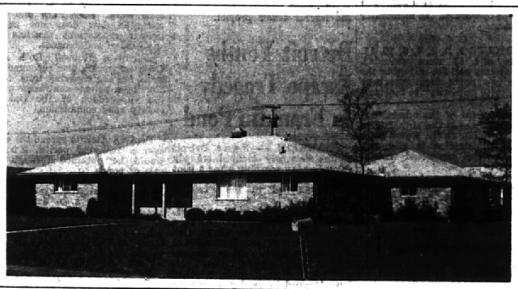


"... so I said to him, 'Who needs fire insurance?'"

Birmingham Insurance Agency

"After We Sell—We Serve" MI 4-2422
114 South Woodward

BUYER'S CHOICE!



CONSIDER THESE FEATURES—

- SITE:** Large corner lot beautifully landscaped — paved road — walking distance to new Parochial elementary and high schools (Brother Rice and Marian).
- LIVING SPACE:** 3-Bedrooms, 2 vanity baths — long Living-Dining room — birch Kitchen and Breakfast area with paneled dado and wallpaper — huge 2-car Garage plus marvelous storage.
- NOTE:** So designed that one Bedroom and Bath can easily be a guest or in-law suite.
- CUSTOM BUILT:** Includes "Gildmaster" windows — marble sills — built-in oven and stove — gas incinerator — slate entry — lush gold carpeting.
- CONDITION:** Is perfect and everything inside and out is immaculate.

CALL US FOR AN APPOINTMENT

SNYDER KINNEY & BENNETT INC.
Realtors

139 So. Woodward

MI 4-7000

Talk

(Continued from 1-F)

sewer is now completed, and your reporter has decided it's time to find a new challenge. Meanwhile, the Rouge River is flowing along sweetly. A few food riots or snows, and engineers think our once-polluted stream will be clean. So, on that note, I'll say so long.

My thanks to the good people who own and run The Birmingham Eccentric for giving this green reporter a press card five years ago. Thanks for wonderful memories, houses, of some exciting stories and a lot of nice people who make news in our towns.

I'm not sure where I'm going to land, but wherever it is, I hope to be writing. In the meantime, I'll be reading about all of you in The Birmingham Eccentric.

Hearing

(Continued from 1-B)

the interceptor opened when Detroit agreed to pay \$355,500 to the county drain office if the drain could be built in two earlier plans, Detroit did not participate in the cost assessments.

Latest figures show that Southfield will have to pay \$3,176,299; Detroit — \$355,518; Oak Park — \$128,302; Oakland county — \$83,192; and the state highway department — \$871,413.

Couple in Collision

SOUTHFIELD—Edith Antonian, 30, 29135 Evergreen road, suffered a fractured ankle when the car in which she was riding, driven by Peter Antonian, 49, same address, collided with another auto at the intersection of Dixie highway and Telegraph road Sunday.

Both are reported in satisfactory condition. Both are reported in satisfactory condition. Both are reported in satisfactory condition.

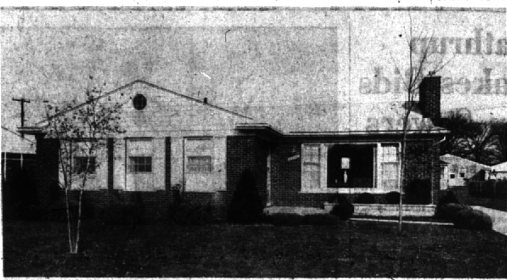
Both are reported in satisfactory condition. Both are reported in satisfactory condition. Both are reported in satisfactory condition.

Burglars Hit Store For Second Time

BLOOMFIELD TOWNSHIP — from \$25 to \$55 each. Thieves burglarized a men's store early Monday and made off with 122 suits, coats and blazers valued at the Miracle Mile shopping cen-

ter, may have been used to smash in a rear glass door. The same store was robbed Sept. 8. Police suspect a connection between the two robberies.

BLOOMFIELD VILLAGE



- ★ Spacious Living room
- ★ Separate Dining room
- ★ Three Bedrooms
- ★ Two full baths
- ★ Carpeting throughout

\$29,500.

FRED PIERCE, INC.
Realtors

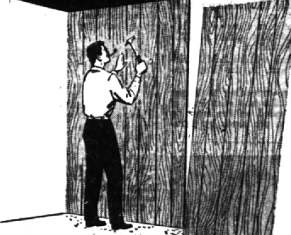
3 Bks N. of Maple
460 N. Woodward

MI 7-1414

ERB-RESTRICK'S CHRISTMAS PARADE OF HOME VALUES

Do it yourself!

EXCEPTIONAL SAVINGS NOW OFFERED ON PREFINISHED PANELING



New walls in a weekend with **PLYWELSH** Prefinished Hardwood Paneling

MAHOGANY Natural Finish 1/2" - 4 x 8' \$5.95	RICH RED MAHOGANY 1/2" - 4 x 8' \$4.95	DRIFTWOOD ASH 1/2" - 4 x 8' \$7.95
---	--	--

RUSTIC BIRCH 1/2" - 4 x 8' Prefinished C-Grade \$8.45	MAHOGANY PLYWOOD PANELING 1/2" - 4 x 8' Unfinished You can finish to suit any decor. \$4.69 Sheet
---	--

ALL SALE ITEMS CASH AND CARRY

USE OUR CHRISTMAS LAY-A-WAY or GIFT CERTIFICATE FOR DAD

Porter-Cable PARADE OF POWER
Save on These Star-Rated Specials!

SAVE \$5.00
Popular **Porter-Cable 6 1/2" Saw**
Model 66 By complete kit for just **\$44.88**
Reg. \$44.95 NOW \$39.95

SAVE \$10 New Porter-Cable Electric Hand Saw
Faster... More Powerful!
In 10 pc. kit with Variable New Carrying Case Model 132A Kit **\$64.95 Value**
Now **\$54.95**

A "MUST" FOR EVERY PROJECT!
Porter-Cable Finishing Sander
Model 145... ONLY... \$34.95
30 Sheets of Sandpaper FREE!

PING PONG TABLE
1/2" - 5' x 9' (K.D.)
With apron and steel folding legs.
\$25.95
Makes ideal gifts.

WORK BENCH
A Real Dad-Size 5-Foot All-Purpose Work Bench.
• 2" Top • 1 Drawer
Easy to Assemble
\$14.95 KD

DELUXE ALL STEEL WORK and HOBBY BENCH
• Double Tier Tool Rack
• Large Steel Drawer
• 21x18-1" Hi-Impact Compressed Wood Top
• Storage Shelf
\$24.95 KD

BAR STOOLS
Unfinished
Sturdy Construction
\$2.88 each
With Back Slightly Higher

PING PONG PADDLE SETS
Low as **\$4.49**

SHELVING
12" x 12"
12 1/2 Lin. Ft.
\$88.00 Bag

PEG BOARD
1/2" - 4' x 8'
\$2.49 Sheet

ARMSTRONG ACOUSTICAL CEILING TILE
60 Ft. Ctn.
Full Random—12 x 12
\$9.45

FIRING

- 1 x 2"
- 2"
- 1 x 3"
- 3"
- Lin. Ft.

- PAINT TOOLS
- HARDWARE MILLWORK

Salesman will call at your convenience!

ERB-RESTRICK

425 S. ETON (South of G.T.R.R. Depot) BIRMINGHAM

FREE ESTIMATES

LUMBER COMPANY

Phone JO 6-3920



HOME OF THE HOUSE DOCTOR