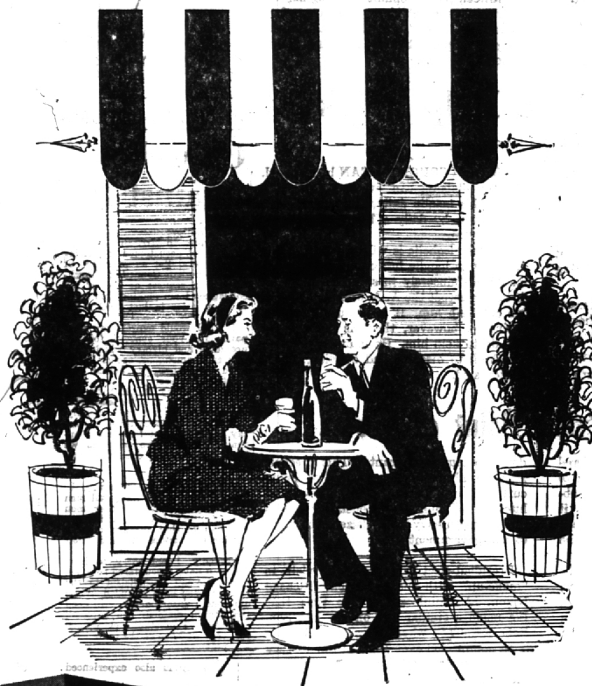


# LAST CHANCE!

## FREE TRIP TO PARIS



**WIN!** AN EXCITING TRIP TO PARIS FOR TWO. Picture yourself strolling along the Seine, dining atop the Eiffel Tower, or touring the magnificent Versailles Palace. Fly Air France to Paris and have the time of your life for 17 glorious days... FREE.

**WIN!** PONTIAC'S NEW/COMER... A 1961 TEMPEST. Here is the car that you've been waiting for. Fun to drive, wonderful to own and so economical. Tempest's Trophy 4 engine saves you real money on the highway... and it's yours... FREE.

**WIN!** A \$2000 SCHOLARSHIP TO THE COLLEGE OF YOUR CHOICE. U. of M., MSUO or anywhere you wish. Here is the chance to fulfill the dream of a lifetime, a college education.

**WIN!** FINAL WEEK TO ENTER FOR THE BIG PRIZES! This is your last chance to enter the Check the Big Difference Sweepstakes and be eligible for the three fabulous Grand Prizes. Fill out the coupon or stop in at the nearest office, now!

Enter Now! in Community National Bank's...

## Check the Big Difference Sweepstakes

No jingles or slogans to write, no accounts to open! Just enter your name and you're eligible. Grand Prize drawing, Friday, December 9, at our main office at 5 P.M. Entries must be postmarked no later than midnight, December 7, 1960, or delivered in person to our main office no later than noon, December 8, 1960. You need not be present to win. All winners will be notified by mail. Sweepstakes open to anyone 14 years or older. Employees of the Community National Bank, its advertising agency or their families are not eligible. You may enter only once.

Names of all winners will be published in the PONTIAC PRESS on December 16, 1960.

*Community*  
**National Bank**  
OF PONTIAC

Nothing to write! Just mail this coupon or stop in any branch and enter your name in the Check the Big Difference Sweepstakes. Be sure to check the branch nearest you to be eligible for the weekly prizes.

(YOU MAY ENTER ONLY ONCE)

Name \_\_\_\_\_  
Address \_\_\_\_\_  
City \_\_\_\_\_ Phone \_\_\_\_\_

MAIN OFFICE  HURON ST.  PERRY ST.  ROMEO  LAKE ORION  WILFORD  
 KEEGO HARBOR  WALLED LAKE  BLOOMFIELD HILLS  UNION LAKE  WATERFORD