

ADDITIONAL SPORTS

Golfers Fishing Still On the Skids

(Continued from Page 8-D)

organization of professional golfers, the junior association has its own rules and regulations set up by a board of directors which includes such top names as Mike Souchak.

With regulation size cups and fabricated felt greens, putt-putt calls for the skill and offers the excitement of the open course. And it actually improves the golfer's game too.

WITH INCREASING interest being stimulated by the lucrative national PPGA tournaments being held weekly in major cities across the country, and by local invitational tournaments being held almost daily in cities everywhere, the charter membership in the PPGA is expected to climb ever higher than ever anticipated.

The sport has even selected its putt-putt queen of 1960, Miss Mary Lynn Sharpe of Tennessee, who recently visited Southfield's Putt-putt Golf Course at Northwood and Telegraph.

The Southfield course and one in Drayton Plains, which boasts being the world's largest, are the only two miniature courses in this area.

The Putt-putt Suburban Open is coming up Sunday, Aug. 21 at Southfield's two 18-hole courses. The match play tournament begins at 1:00 p.m. with \$100 and \$50 bonds awaiting the winners.

The tournament is open to any one with a \$2 entry fee charged.

Athlete

(Continued from Page 8-D)

one of the trio still active with the pigskin.

With Abernathy transferring to Ohio Wesleyan University in Delaware and Traa dropping out of sports because of injuries, Hoffman has been doing it alone. And he's doing a great job of it too.

Considerably heavier than he was in his developing high school days, Huffman now plays right tackle for the modishmen of Annapolis. He ranked among lettermen for football last year and was named to the area all-star team. Not confining his interests to any one sport, he played for Navy's national championship lacrosse team in 1960 and was one of three players to make the all-American team.

HUFFMAN PLAYED in last year's 43-12 Army trouncing, the worst beating the Mudlids have ever dished out to Army. "And things look even better this year," said Huffman. "Although Navy turned on the heat against Army last year, their record slumped to a 6 and 4 by the end of the season. "Our team was young and inexperienced," he said, "but this season we have 17 lettermen back as compared to only four the previous year."

After graduating in June, Huffman hopes to get into the submarine branch of the Navy.

Fishing Still On the Skids

Michigan's fishing license sales are on the skids for the sixth straight year. Figures through the first seven months of 1960 show. As of July 30, only \$21,900 licenses and trout stamps were reported sold, about eight percent under last year's total through this period. In 1959, sales fell by about the same percentage from the year before. This has been the story since 1954.

Biggest drop this year is in resident licenses, which are down to \$7,002. At this time in 1959, they were \$25,292. Trout stamps tumbled from 125,511 last year to 119,719. Annual nonresident licenses sagged from 61,319 to 60,050 while temporary nonresident sales are off by nearly 1,200 licenses.

All money from hunting and fishing license sales goes into the Game and Fish Protection Fund which carries more than one-half of Michigan's conservation load.

Shoot

(Continued from Page 8-D)

out of 30 shots and then won a mid-day shoot-off.

Ford became the first man in the state to break 200 consecutive hits in the 1940 state shoot. Only one other gunner has repeated his feat since.

IN HIS FIRST YEAR of competitive shooting, Ford hinged out 3600 shots with a 98 per cent hit average. Up to three years ago he had fired 75,000 shots for an overall accuracy average of 96.7 per cent.

Although the extent of his shooting has tapered off in the last few years, he still travels the circuit, competing in statewide events. When he's not competing, he's shooting a couple days a week to keep in shape.

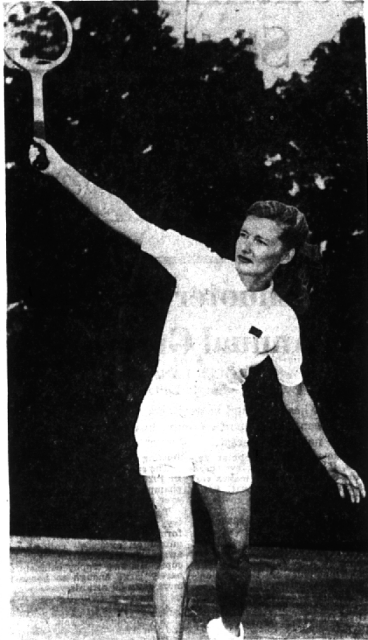
One interesting form of trap shooting is the pigeon match. It's a 25-yard race with five traps placed in a semi circle five yards apart. Like the disc targets ejected from the traps, the birds, when released, fly off in different directions, falling only to the combined skills of quick gun and sharp eye.

THIS IS THE big difference between trap and skeet shooting, said Ford. "In skeet shooting, you know exactly well just where the target is going, but in trapshooting, it may go anywhere." Ford draws a definite line between the two sports and claims he wouldn't bother with skeet shooting.

"When that trap opens, I go to work," you better be ready to go to work."

What about the excitement of the sport? "Like any other," said Ford, "you get a thrill out of handling the challenge of competition."

When it comes to equipment, Ford is well prepared with a 15-gun arsenal of varying types of 12-



Netters to Face Top Pro

Local netters will have a chance to match their skill with Pauline Betz Addie, one of the greatest women tennis players of all time, at the Pine Lake Country club Sunday, Aug. 21. In the featured match of the day's exhibition play, she will face Don Brown, Pine Lake tennis pro. She also will play exhibition mixed doubles with winners of the club's current tournament. Miss Betz has held such titles as National Women's champion, Wimbledon champion and National Professional champion. She will be the house guest of Mr. & Mrs. C. W. Smith, 3060 Chickering Lane, Bloomfield Hills, during her visit.

gauge shot guns. "You've got to be a better shot than you are," he said. "You've got to have a gun that fits you, as well as good eyesight," he said.

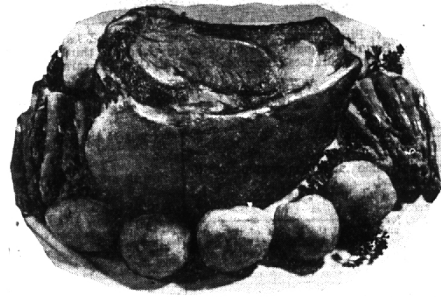
HIN WELL KEPT collection including everything from hand-Merkel, made in Germany which made automatics to precision built pumps provides him with a trading stock for bargaining with other gunners. No doubt, competitors will see a lot of that weapon during the "Sometimes you get going a lit-

Grand American next week.



U.S. CHOICE OR PRIME

Standing Rib Roast Of Beef



59^c

RIB STEAKS CUT ON REQUEST
SFIRES WILL CUT & FREEZER WRAP FREE OF CHARGE

GROUND BEEF SPECIAL 10 Lbs. \$3⁹⁹

- | | | | |
|--------------------------------|-----------|--------------------------|--------------------|
| LAND O' LAKES BUTTER, 93 SCORE | 69c lb. | WISCONSIN SHARP CHEESE | 79c lb. |
| PHILADELPHIA CREAM CHEESE | 2 for 25c | BORDEN'S AMERICAN CHEESE | 1 1/2-lb. Loaf 59c |
| BORDEN'S GELATIN SALADS | 29c | SWIFT'S PREMIUM BACON | 59c |

- S & W
- | | |
|--------------------------------|-----------|
| TOMATO JUICE, 46-oz. cans | 3 for \$1 |
| REESE BEET SALAD, Jars | 3 for \$1 |
| Friskies | |
| DOGO FOOD, case of 48 cans | \$6.29 |
| JELLY INSTANT PUDDING, Pkgs. | 3 for 25c |
| French's | |
| INSTANT MASHED POTATOES, Pkgs. | 2 for 65c |

INSTANT SANKA



8^c Off Label

5-oz. Jar **89^c**

ALCOA WRAP HEAVY DUTY



65^c

18-Inch Size

HILLS BROS. INSTANT COFFEE

6 oz.	79 ^c
10 oz.	\$1.29

HILLS BROS. COFFEE 65^c lb.

FROZEN FOODS

- | | |
|-----------------------------|-----------------------|
| BIRDS EYE | |
| ORANGE JUICE, 6-oz. | 5 for 99c |
| POTATO PUFFS, 9-oz. | POTATO SALE |
| POTATO PATTIES, 12-oz. | 19^c |
| WHIPPED POTATOES, 12-oz. | |
| WAX BEANS, 9-oz. | 4 for 79 ^c |
| SUCCOTASH, 10-oz. | |
| MAIN DISHES FOR 2 | |
| CHICKEN & NOODLE, 15-oz. | 29^c |
| MACARONI & CHEESE, 15-oz. | |
| MRS. PAUL'S | |
| CRAB MINIATURES, 7-oz. | 2 for 89 ^c |
| DEVILED CRABS, 6-oz. | |
| DOLE | |
| PINEAPPLE CHUNKS, 1 1/2-oz. | 2 for 49 ^c |
| PINEAPPLE JUICE, 6-oz. | 4 for 75 ^c |
| G & W | |
| CHEESE PIZZA, 10-oz. | 49^c |

STROH'S
Imperial
ICE CREAM
LAST 3 DAYS

Half Gal. **69^c**
ALL FLAVORS

Banana Nut Drop Cookies	6 for 38c	Raspberry Filled Bear Claws	3 for 41c
Almond Crunch Friedcakes	6 for 62c	(FRIDAY & SATURDAY ONLY)	
Beehive Coffee Cakes	88c Each	Peach Buttercream Filled	88c half;
		Chiffon Layer Cakes	\$1.75 Each



Specialty of the house... INVESTMENT MANAGEMENT

Great food takes time, knowledge and experience to prepare. The same ingredients blended by less skillful hands produce a lesser dish.

So, too, it takes great skill, time and experience to manage investments most effectively. Daily details involved in stock splits, mergers, rights, maturity dates, redemptions, management changes... are just a few of the things that can vitally affect your investments.

Most people just don't have the time to keep close watch over all of these factors. That's why it makes such good sense to let our Trust Officers at Detroit Bank & Trust handle all of the details for you. We can provide the time, skill and experience so essential to the sound management of your investments.

Why not call the Trust Department at WO-2-5870 and let us show you how the specialty of our house, Investment Management, can be of service to you.

DETROIT BANK & TRUST

58 CONVENIENT OFFICES MEMBER FDIC
All 3 Birmingham Offices offer complete trust services for your convenience