



## MADRAS BERMUDAS

That Bleed For You

Sizes 30 to 40 ..... \$10<sup>95</sup>

### MONOGRAM TIES

"The gift of tomorrow"  
Initials or Names  
7 Plain Colors



**Jerry MORSE**

Gentlemen's Attire

147 PIERCE — BIRMINGHAM A Few Steps South of Maple  
MI 6-5539 Open 9-5:30 daily—Friday 'til 9



Kingston Trio "Sold Out"	Reg. \$3.98	Sale \$3.39
"Swing Dat Hammer" — Harry Belafonte	Reg. \$3.98	Sale \$3.39
60 Years of Music	Reg. \$9.98	Sale \$9.98
Sound of Music—Original Broadway Cast	Reg. \$5.98	Sale \$5.29
Persuasive Percussion—Stereo	Reg. \$5.98	Sale \$5.29
Provocative Percussion—Stereo	Reg. \$5.98	Sale \$5.29

299 W. Maple **Birmingham**  
Corner Maple & Bates

## Planners Yet to Hear Two Major Reports

What were probably two of the most important reports it has received in many months went almost unnoticed at a Birmingham plan board meeting last week.

The board, plagued with quorum and a capacity audience tossed around nine zone change requests.

The board's final conclusions as to what it will do in the B-1 question are yet to be made. Herzberg's neighborhood facility survey (including parks, playgrounds, school sites, general community facilities and neighborhood shopping) showed Birmingham well above minimums suggested by the American Health Association and Local Planning Association.

The B-1 study—several months in the making—indicated, according to City Planner Herbert Herzberg that development of non-retail business in Birmingham for the last 10 years has been heavily HEZBERG relied most heavily, he said, on population figures for Birmingham and its trade area for his conclusions.

Birmingham's estimated population for 1959 is 235,300 for 1960 is 242,000. Birmingham's trade area numbered 68,480 persons in 1959 is expected to include 129,550 in 1960.

"Presuming that the non-retail business floor areas of 1950 and 1959 were fair minimum estimates for the supporting population," Herzberg said, "1960's need would be 1,162,000 square feet—an increase of 42 per cent."

"ESTIMATED existing business zones in Birmingham that are presently vacant or being used for residential purposes ex-

clusive of the central business district is 35 per cent," the planner went on.

The board's final conclusions as to what it will do in the B-1 question are yet to be made. Herzberg's neighborhood facility survey (including parks, playgrounds, school sites, general community facilities and neighborhood shopping) showed Birmingham well above minimums suggested by the American Health Association and Local Planning Association.

The B-1 study—several months in the making—indicated, according to City Planner Herbert Herzberg that development of non-retail business in Birmingham for the last 10 years has been heavily HEZBERG relied most heavily, he said, on population figures for Birmingham and its trade area for his conclusions.

Birmingham's estimated population for 1959 is 235,300 for 1960 is 242,000. Birmingham's trade area numbered 68,480 persons in 1959 is expected to include 129,550 in 1960.

"Presuming that the non-retail business floor areas of 1950 and 1959 were fair minimum estimates for the supporting population," Herzberg said, "1960's need would be 1,162,000 square feet—an increase of 42 per cent."

## Public Funds Provide 16.6% of Income Here

Special to The Eccentric

NEW YORK—How big is the financial role played by government—federal, state and local—in the lives of Birmingham residents? How much of the personal income of the local population comes from the state?

On the basis of a national study made by the Tax Foundation and reported in a state-by-state breakdown, 16.6 cents of the income dollar in the region comprising Birmingham is from public funds.

Taken into account in the study, which was for the year 1958, were payments of wages and salaries to government employees, social security, unemployment compensation, pensions and public assistance.

FOR THE Birmingham area, applying the state figure locally, 16.6 cents consist of 8.6 cents, which comes from the Federal government, and 8.0 cents, from state and local sources.

On the average, in the United States, 15.0 cents of every dollar of personal income received by Americans comes in the form of government checks, reports the Tax Foundation. In the East North central states, it averages 15.3 cents.

The federal government disbursed a total of \$40.3 billion, or 11 percent of all personal income, while \$25.1 billion, or 7 percent, came from state and local governments.

THE RATIO of government payments to personal income was highest, by far, in the District of Columbia, because of the heavy concentration there of federal employees. It was 45.4 percent.

Elsewhere, the largest percent.

## BITS OF BIRMINGHAM

It's not easy to plot some plots, local real estate men can tell you. For instance, Lee W. Keating must obtain signatures from nearly 150 owners in Corbett park subdivision before he can sell 10 proposed lots at the corner of Shirley and Maple. The city attorney's plan board are interested in the plot—they must put the city's stamp on it to make it legal. But it will mean nothing without the 150 or so other signatures. Keating says the subdivision's directors have tentatively approved the plan.

Just 25 years before he marched down the church aisle with his daughter Monday night, Birmingham Det. Lt. Merlin Holmquist had taken the big step himself. He and his wife, Lavonne, celebrated their silver wedding anniversary the day daughter Marilyn was married to James Ralph Woodburn at ceremonies at First Methodist church. The bride and her young brother, Robert, honored their well-known dad and his spouse Sunday, when over 50 people attended an open house for them.

Four thousand three hundred eighty-eight quarts of milk is consumed at the John Callaghans' home on Manor road, Birmingham, per year. The figure will be larger this coming year since the arrival of the 15th Callaghan. Baby Bridget was born April 7 in Crittenton General hospital. Wednesday was a big day at the Callaghans. Bridget was baptized at Holy Name church by her uncle, the Rev. Patrick C. Callaghan, of Albany. Mrs. Callaghan commented that the children are just delighted with the new arrival, but she has to put the baby on the cupboard because they might walk away with her. Mr. Callaghan is organizer and choir director at two churches, Holy Name here and St. Bernard in Detroit. He also teaches organ at Marygrove college.

The first man to sell on the value of your goods is yourself.

Jackies stand in their stirrups to distribute their weight evenly.

The Kentucky Derby has been run every May since 1875.

Pictures can be taken of mirages.

## Pontiac Promotes Our Former Editor

The appointment of John H. Harwood as assistant chief sales manager for Pontiac Motor division has been announced by Frank V. Bridge, general sales manager.

Birmingham and vicinity are no strangers to Harwood, since from 1939 to 1943 he was The Eccentric's managing editor. He has purchased a home at 826 Larchlea where his wife, Margaret, and 11-year-old son Jack reside.

A native of Kingsville, Tex., Harwood joined Pontiac with the home office in 1945 as publications editor for the advertising department. In 1948 he was named a district manager in the Pontiac sales zone and, in 1950, was transferred to New York City as business management manager.

Harwood was promoted to Washington assistant zone manager in 1952—the position he held prior to his new appointment.

## BCDS Accepting Applications

Bloomfield Country Day school for girls is accepting applications for admission to class next fall.

Admission tests will be given at 9 a.m. May 14 to those who have made formal application.

The school is at 1050 E. Square Lake road, at Squirrel road.

**The Birmingham Eccentric**  
Published weekly except semi-weekly for one week in December, first five weeks in December, first five weeks in January, first five weeks in February, first five weeks in March, first five weeks in April, first five weeks in May, first five weeks in June, first five weeks in July, first five weeks in August, first five weeks in September, first five weeks in October, first five weeks in November, first five weeks in December.

Published weekly except semi-weekly for one week in December, first five weeks in December, first five weeks in January, first five weeks in February, first five weeks in March, first five weeks in April, first five weeks in May, first five weeks in June, first five weeks in July, first five weeks in August, first five weeks in September, first five weeks in October, first five weeks in November, first five weeks in December.

Published weekly except semi-weekly for one week in December, first five weeks in December, first five weeks in January, first five weeks in February, first five weeks in March, first five weeks in April, first five weeks in May, first five weeks in June, first five weeks in July, first five weeks in August, first five weeks in September, first five weeks in October, first five weeks in November, first five weeks in December.

Published weekly except semi-weekly for one week in December, first five weeks in December, first five weeks in January, first five weeks in February, first five weeks in March, first five weeks in April, first five weeks in May, first five weeks in June, first five weeks in July, first five weeks in August, first five weeks in September, first five weeks in October, first five weeks in November, first five weeks in December.

Published weekly except semi-weekly for one week in December, first five weeks in December, first five weeks in January, first five weeks in February, first five weeks in March, first five weeks in April, first five weeks in May, first five weeks in June, first five weeks in July, first five weeks in August, first five weeks in September, first five weeks in October, first five weeks in November, first five weeks in December.

Published weekly except semi-weekly for one week in December, first five weeks in December, first five weeks in January, first five weeks in February, first five weeks in March, first five weeks in April, first five weeks in May, first five weeks in June, first five weeks in July, first five weeks in August, first five weeks in September, first five weeks in October, first five weeks in November, first five weeks in December.

Published weekly except semi-weekly for one week in December, first five weeks in December, first five weeks in January, first five weeks in February, first five weeks in March, first five weeks in April, first five weeks in May, first five weeks in June, first five weeks in July, first five weeks in August, first five weeks in September, first five weeks in October, first five weeks in November, first five weeks in December.

Published weekly except semi-weekly for one week in December, first five weeks in December, first five weeks in January, first five weeks in February, first five weeks in March, first five weeks in April, first five weeks in May, first five weeks in June, first five weeks in July, first five weeks in August, first five weeks in September, first five weeks in October, first five weeks in November, first five weeks in December.

Published weekly except semi-weekly for one week in December, first five weeks in December, first five weeks in January, first five weeks in February, first five weeks in March, first five weeks in April, first five weeks in May, first five weeks in June, first five weeks in July, first five weeks in August, first five weeks in September, first five weeks in October, first five weeks in November, first five weeks in December.

Published weekly except semi-weekly for one week in December, first five weeks in December, first five weeks in January, first five weeks in February, first five weeks in March, first five weeks in April, first five weeks in May, first five weeks in June, first five weeks in July, first five weeks in August, first five weeks in September, first five weeks in October, first five weeks in November, first five weeks in December.

Published weekly except semi-weekly for one week in December, first five weeks in December, first five weeks in January, first five weeks in February, first five weeks in March, first five weeks in April, first five weeks in May, first five weeks in June, first five weeks in July, first five weeks in August, first five weeks in September, first five weeks in October, first five weeks in November, first five weeks in December.

Published weekly except semi-weekly for one week in December, first five weeks in December, first five weeks in January, first five weeks in February, first five weeks in March, first five weeks in April, first five weeks in May, first five weeks in June, first five weeks in July, first five weeks in August, first five weeks in September, first five weeks in October, first five weeks in November, first five weeks in December.

Published weekly except semi-weekly for one week in December, first five weeks in December, first five weeks in January, first five weeks in February, first five weeks in March, first five weeks in April, first five weeks in May, first five weeks in June, first five weeks in July, first five weeks in August, first five weeks in September, first five weeks in October, first five weeks in November, first five weeks in December.

Published weekly except semi-weekly for one week in December, first five weeks in December, first five weeks in January, first five weeks in February, first five weeks in March, first five weeks in April, first five weeks in May, first five weeks in June, first five weeks in July, first five weeks in August, first five weeks in September, first five weeks in October, first five weeks in November, first five weeks in December.

Published weekly except semi-weekly for one week in December, first five weeks in December, first five weeks in January, first five weeks in February, first five weeks in March, first five weeks in April, first five weeks in May, first five weeks in June, first five weeks in July, first five weeks in August, first five weeks in September, first five weeks in October, first five weeks in November, first five weeks in December.

Published weekly except semi-weekly for one week in December, first five weeks in December, first five weeks in January, first five weeks in February, first five weeks in March, first five weeks in April, first five weeks in May, first five weeks in June, first five weeks in July, first five weeks in August, first five weeks in September, first five weeks in October, first five weeks in November, first five weeks in December.

Published weekly except semi-weekly for one week in December, first five weeks in December, first five weeks in January, first five weeks in February, first five weeks in March, first five weeks in April, first five weeks in May, first five weeks in June, first five weeks in July, first five weeks in August, first five weeks in September, first five weeks in October, first five weeks in November, first five weeks in December.

Published weekly except semi-weekly for one week in December, first five weeks in December, first five weeks in January, first five weeks in February, first five weeks in March, first five weeks in April, first five weeks in May, first five weeks in June, first five weeks in July, first five weeks in August, first five weeks in September, first five weeks in October, first five weeks in November, first five weeks in December.

Published weekly except semi-weekly for one week in December, first five weeks in December, first five weeks in January, first five weeks in February, first five weeks in March, first five weeks in April, first five weeks in May, first five weeks in June, first five weeks in July, first five weeks in August, first five weeks in September, first five weeks in October, first five weeks in November, first five weeks in December.

Published weekly except semi-weekly for one week in December, first five weeks in December, first five weeks in January, first five weeks in February, first five weeks in March, first five weeks in April, first five weeks in May, first five weeks in June, first five weeks in July, first five weeks in August, first five weeks in September, first five weeks in October, first five weeks in November, first five weeks in December.

Published weekly except semi-weekly for one week in December, first five weeks in December, first five weeks in January, first five weeks in February, first five weeks in March, first five weeks in April, first five weeks in May, first five weeks in June, first five weeks in July, first five weeks in August, first five weeks in September, first five weeks in October, first five weeks in November, first five weeks in December.

Published weekly except semi-weekly for one week in December, first five weeks in December, first five weeks in January, first five weeks in February, first five weeks in March, first five weeks in April, first five weeks in May, first five weeks in June, first five weeks in July, first five weeks in August, first five weeks in September, first five weeks in October, first five weeks in November, first five weeks in December.

Published weekly except semi-weekly for one week in December, first five weeks in December, first five weeks in January, first five weeks in February, first five weeks in March, first five weeks in April, first five weeks in May, first five weeks in June, first five weeks in July, first five weeks in August, first five weeks in September, first five weeks in October, first five weeks in November, first five weeks in December.

Published weekly except semi-weekly for one week in December, first five weeks in December, first five weeks in January, first five weeks in February, first five weeks in March, first five weeks in April, first five weeks in May, first five weeks in June, first five weeks in July, first five weeks in August, first five weeks in September, first five weeks in October, first five weeks in November, first five weeks in December.

Published weekly except semi-weekly for one week in December, first five weeks in December, first five weeks in January, first five weeks in February, first five weeks in March, first five weeks in April, first five weeks in May, first five weeks in June, first five weeks in July, first five weeks in August, first five weeks in September, first five weeks in October, first five weeks in November, first five weeks in December.

Published weekly except semi-weekly for one week in December, first five weeks in December, first five weeks in January, first five weeks in February, first five weeks in March, first five weeks in April, first five weeks in May, first five weeks in June, first five weeks in July, first five weeks in August, first five weeks in September, first five weeks in October, first five weeks in November, first five weeks in December.

Published weekly except semi-weekly for one week in December, first five weeks in December, first five weeks in January, first five weeks in February, first five weeks in March, first five weeks in April, first five weeks in May, first five weeks in June, first five weeks in July, first five weeks in August, first five weeks in September, first five weeks in October, first five weeks in November, first five weeks in December.

Published weekly except semi-weekly for one week in December, first five weeks in December, first five weeks in January, first five weeks in February, first five weeks in March, first five weeks in April, first five weeks in May, first five weeks in June, first five weeks in July, first five weeks in August, first five weeks in September, first five weeks in October, first five weeks in November, first five weeks in December.

## Rek Board To Pare '60 Budget

Birmingham Board of Education members told the Birmingham Recreation Board to prepare for a cut in its \$104,000 1960-61 recreation budget.

The recreation board had submitted the proposed budget to the city commission for approval before the current cash dilemma of the board of education was known.

Don Martin, recreation director, is proceeding with a limited summer program. Such programs as a summer basketball clinic for boys in 7-12 grades will be financed through registration fees and donations, offsetting the cost of the program.

Final decision of the recreation budget may come in early May.

THIS, PLUS several other smaller cuts, will reduce the original cost to the board of education by nearly \$1,500.

As it stands, the recreation board is proceeding with a limited summer program. Such programs as a summer basketball clinic for boys in 7-12 grades will be financed through registration fees and donations, offsetting the cost of the program.

Final decision of the recreation budget may come in early May.

Prescription for profit: A want ad by phone or mail.

## How To Help A Husband Get Ahead

1. See that he has a lovely, understanding and helpful wife.

2. Make sure he lives in a home he is proud of.

3. Give him an intelligent, attentive "sounding-board"; someone he can talk to about his hopes, ambitions and dreams.

4. Help him manage to get the most from what he makes; the most value; the most fun; the most!

5. While we are on that subject, the place to get the most in men's clothing is PAUL'S of Birmingham.

and Birmingham is the best place to shop. You and he can go together, choose together, save together at PAUL'S. Incidentally, we'll stay open evenings if you call us.

## Special For Spring...

Curlee Maphattan Olive

Most seasonable of suits. A color that's most fashionable. A most remarkable suit at \$70.00

Curlee Hudson Blue

Cool to the eye, and to the touch. A remarkable fabric that's wrinkle-resistant, and press-preserving. See how it looks. Also \$70.00

Also Elegantes, and Summerhaves in Browns, Greys, Checks, Stripes. They're all Curlee, handsomely styled, fashioned from exclusive fabrics and surprisingly priced. We don't think there's a better suit value around, and neither do our customers.

**PAUL Custom Tailor**

(Tailor to 198 of the best-dressed, and thricest, men in Birmingham and Bloomfield.)

213 E. Maple MI 6-6474

## SPRING CLEARANCE SALE

303 E. Maple Between Hunter & Woodward

## FAMOUS NAMES MEN'S & CHILDREN'S SHOES

Black Italian Loafers	NOW \$10.88
Men's Chukka Boots, Reg. \$14.88	NOW \$9.88
Children's Chukka Boots, Reg. \$8.95	NOW \$4.88
Children's Dress Shoes (Bone), Reg. \$7.95	NOW \$4.88
Men's High & Low Tennis Shoes, Reg. \$6.98	NOW \$4.88

## GILLIES SHOES

MEN'S & CHILDREN'S STORE

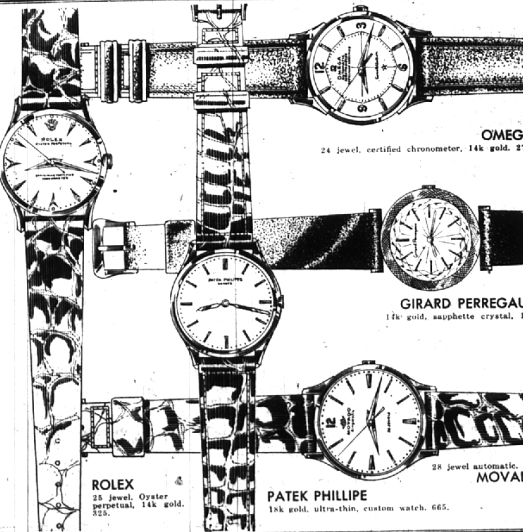
between Hunter & Woodward

MI 6-4313

WOMEN'S SHOES

Corner E. Maple

MI 6-9599



## Ready To Try On Fabulous Furs for Spring

New Colors! New Fashions!

**Furs by Robert**

1550 Broadway Also Grosse Pointe, Birmingham

Exclusive jewellers since 1951

## Men's fine watches on parade at Wright Kay

Designed with the active man in mind... a collection of exceptionally accurate and handsome watches from world-renowned makers. For graduation, anniversaries or any memorable occasion, there is no finer gift.

Prices include Federal tax

## Wright Kay

1500 Woodward and Northland  
WO 2-0500; Convenient accounts available

EVERYTHING WE SELL MUST TRAVEL WELL

**Kay Cooley**

It's a wonderful Spring for Knits... that travel and pack with ease

**\$59.95**

**\$45.00**

From our remarkable Kimberly collection, of 100% cotton... they're washable!

a. Blueberry, beige, black or white.

b. Beige, navy or blue. Both sizes 10 to 20.

Sorry, no phone, mail or C.O.D. orders.

Lobby of Stotler Hilton, Detroit

190 W. Maple Birmingham

**Kay Cooley**