

## Install New Stock Board

Installation of a modern electronic stock quotation board has been announced by Watling, Leach & Co., West Maple and Cranbrook roads.

Victor W. Hughes, 2180 Harvard court, West Bloomfield, resident manager of the firm, said, "The board is of the latest type and furnishes high speed quotations directly from Wall Street."

State Licensed  
24 Hour Nursing Service

Member of  
Michigan Association of  
Approved Nursing Homes

**Tower Park Nursing Home**

1667 So. Lafayette • Lincoln 7-0430 • Royal Oak, Mich.

AMBULATORY • Excellent Food • DIABETIC  
CANCER • Special Care • STROKE  
CARDIAC • Physician on • LEVING-TURE  
POST OPERATIVE • 24 Hour Call • MEDICAL CASES

X-Ray and Laboratory Facilities Available

**FIESTA POOLS**

ONLY 5 WEEKS  
UNTIL THE  
SWIMMING  
SEASON!

**PLAN NOW!**




**FIESTA POOLS**  
for HOMES • CLUBS • MOTELS

A Fiesta Pool is individually built to conform to your building site and individual preference, of unequalled quality construction, heavily reinforced with steel. Fiesta Pools have the world's finest filter system, automatic chlorination, safety designed deck and safety enclosure pool shell. For information about a Fiesta Pool for you, at no obligation, phone Lincoln 2-8400.

**Filtered Pools** For as little as \$2,995.00

**A. J. MILLER, INC.**  
Since 1925  
1320 Campbell Rd. Royal Oak  
LI 2-8400



## Meet Edwin C. Roesner a good man to know

"Eddie" Roesner likes to be known as a man who knows his business—security! His background is 31 years in the securities field. He graduated from U. of D. Eddie numbers among his acquaintances some of the best known business names in the Midwest. Speech? No Stephen A. Douglas, but his keen mind and vast experience make him well worth listening to—hard!

Why is "Eddie" a good man to know?—because he's a real specialist on brokerage advice and service and an expert when it comes to securities. He is always abreast of the market, thanks to a constant flow of current facts and forecasts supplied to him by Goodbody's well known and highly respected Research Department, a pioneer in its field. That's why Eddie is a good man to know. Call him today at

MI 6-3156 or JO 6-6300

**GOODBODY & CO.**

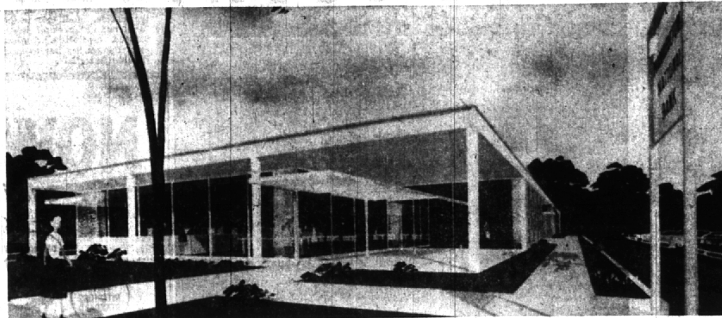
CREATIVE RESEARCH

**G**

MICHIGAN LIFE BUILDING  
N. WOODWARD NEAR 13 MILE

Other Michigan Offices  
PENSACOLA BLDG., DETROIT  
199 National Offices

# BUSINESS BRIEFS



An architectural rendering of Manufacturers National Bank's new office on West Maple road, east of Telegraph road, in Bloomfield Township. Designed by Louis G. Redstone, Architects, incorporated and constructed by the R. E. Dailey company, the office embodies a number of

new features and services. An early summer opening is scheduled. The building provides for year around temperature control through a gas fired hot water heating system and a twenty-five ton air-conditioning unit.

## Early Summer Opening Due for Bank Office

An early summer opening is slated for Manufacturers National Bank's attractive new office on West Maple road, east of Telegraph road, according to Roland A. Mewhort, executive vice president.

Covering approximately 3,850 square feet of floor space on two levels, the structure replaces the bank's present office located just to the west.

In keeping with Bloomfield township's development as one of Oakland county's most attractive, progressive communities, the new office combines contemporary design and functional features necessary to provide an extended range of banking services.

Two drive-in windows, additional

tellers' cages, a letter drop night depository, and a permanent safe deposit vault designed to accumulate 3,000 boxes are among the new facilities available to customers.

CONVENIENCE is emphasized in the customers' conference room and a private customers' lounge.

Open glass walls framed by aluminum and granite emphasize the north (front) and west sides of the exterior. The remaining walls, along with portions of the west wall, are textured cinnamon tan limestone.

Another entrance adjoins the customers' parking area which accommodates fifty automobiles.

**Fellowship  
For Hensick**

Selection of Donald H. Hensick, 171 N. Glenhurst, Bloomfield Village, depot operations manager for the Tractor and Implement Division, Ford Motor company, is announced by the Fellowship in executive development.

ment has been announced by the Massachusetts Institute of Technology, M.I.T. officials and the Fellowship.

all between 30 and 39 years old, are "exceptionally able executives whose employers nominated them because they showed marked promise of growth for major executive responsibilities."

He joined the Tractor and Implement division in 1954 as implementation parts supervisor and was appointed assistant manager in charge of merchandising in the parts and accessories department in 1956.

In November, 1956, he was named manager of the Des Moines parts depot, serving in that capacity until he was given his present assignment in 1958.

In 1948 as an office clerk in the company's Buffalo office, Clawson, who has been named manager of financial sales—data processing, began his Burroughs career in 1935 in New Haven, Conn. Vitale, manager of financial sales—general products, joined Burroughs in 1948 in Los Angeles.

**3 Men Named  
To Key Posts**

Three Burroughs corporation executives from Birmingham and Beverly Hills have been named to key posts in the company's newly formed Equipment and Systems Marketing division.

Appointed to new positions in a major reorganization were: I. C. Whitney, 19259 Georgetown, Beverly Hills; Lester J. Clawson, 171 N. Glenhurst, Hillbore drive, and James V. Vitale, 155 N. Glenhurst, both of Birmingham.

Whitney, former assistant to the general sales manager of the roughs division, has been named assistant to the vice president of marketing.

Clawson and Vitale will head two separate financial sales groups set up in the new marketing division.

Both formerly held executive posts in the Burroughs division which has been dissolved.

**WHITNEY JOINED Burroughs**

**STOP BURNING  
MONEY!**

If your old furnace is stealing dollars, modernize now and save

Install an efficient  
**AMERICAN-Standard**  
GAS OR OIL  
**BOILER**  
CAST IRON CONSTRUCTION

Economical  
Clean • Quiet  
Dependable



**G. C. JOHNSTON**  
Plumbing and Heating  
Birmingham—1691 Big Beaver Rd.  
PHONE MIDWEST 4-5540

## Olsen's Market



MI  
4-1916

### PICK A WINNER FOR EASTER DINNER!

With the oyster on vacation 'til Fall, Easter Sunday will be your last chance for a traditional holiday dinner built around a traditional meat course: ham or lamb. Make your decision, then consider Olsen's fine quality ham, cured to perfection. Or a leg of lamb, most tricky of all to select by appearance—it takes an experienced butcher to tell a tender leg from a tough one. Ham or lamb, buy it here to be sure... Shop in comfort from your home. Call us on your telephone... We deliver.

Want these? Sea Toast—Aged New York Cheddar and Danish blue cheese—Toasted Bread Crumbs—Blueberry Syrup—Spickled Pigs Feet—Vanilla-flecked Ice Cream—Center Cut Salmon—Country Sausage—Cage Eggs—Stuffed Pork Chops—Scraple—Try Olsen's for the unusual appetite tempters.

Ask for: Merritt Harold Phil Bob Patricia

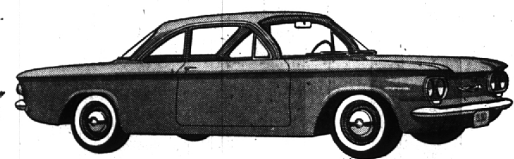
407 Brown at Chester "We Deliver" Established 1924



eye it... try it... buy it

**corvair**  
BY CHEVROLET

\*\*\*\*\*



You have your choice of four Corvairs—this one's the Corvair 500

**\$1710.99**  
Plus Tax & License

The only American car with the engine in the rear of car.  
The only American car with an airplane-type horizontal engine!  
The only American car with independent suspension at all 4 wheels!  
The only American car with an air-cooled aluminum engine!

## North Chevrolet

1000 S. Woodward

MI 4-2735

OUR SERVICE DEPARTMENT IS  
**OPEN 'TIL MIDNIGHT**  
For Your Convenience Monday thru Friday