

Exchange Student Speaks to Alums

Delta Gamma will meet at 8 p.m. Walker, April 12 at the home of Shirley. The program will be a talk by Hersey, 400 W. Maple. The co-host, a foreign exchange student who speaks are Mrs. William Killen and lives at the home of club member Mrs. Thomas Kinkead and Mrs. D. Mrs. S. K. Thingstad.

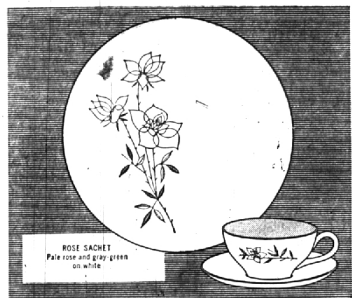
Prom Gowns

A beautiful selection of new Spring Prom Gowns. Come in and see for yourself—Be the Belle Of The Ball.

INGRID'S
BRIDAL SALON

2875 WOODWARD 2 Blocks South of 12 Mile
Open Mon., Thurs. and Fri. Till 9 11 8-0010

ONLY ONE OF OVER 300 OPEN STOCK PATTERNS . . .



A John Gilkes Design

Taylorlorton

AMERICAN FINE CHINA
AT A PRICE YOU CAN AFFORD!

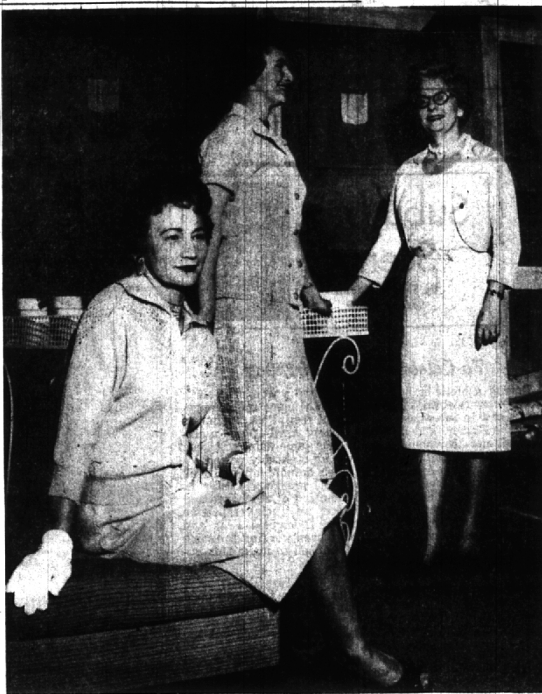
Taylorlorton China . . . light, translucent, durable. Costs no more than good earthenware, thanks to advanced ceramic research by Taylor, Smith & Taylor Co. A cherished possession, it will provide you with many proud and happy moments in the years to come. Exclusive processes make Taylorlorton stronger, more enduring. Scratch and stain resistant. Unharmful by harsh detergents. And Taylorlorton is oven-proof.

Ask about our one-year guarantee against breakage!

Rose Sachet 45 piece service for eight \$44⁹⁵
PONTIAC POTTERY

"Michigan's largest dinnerware specialty store"
2099 S. Telegraph FE 2-8642
Adjacent to north side of Miracle Mile
Open Daily and Sunday 10 to 5

2-C THE BIRMINGHAM (MICH.) ECCENTRIC April 7, 1960



Sneak Preview for Members

April 13 is the day when members of Forest Lake country club gather for their opening ladies bridge luncheon and fashion show. Getting a sneak preview of some of the fashions which will be modeled that afternoon are (from left) Mrs. Kenneth J. Wag-

oner of Charles Lane, Franklin; Mrs. Norman Reek of Detroit, and Mrs. Matthew Clevers of Interlachen road, Orchard Lake. Working on the event are Mesdames S. L. Goodale, C. B. O'Neil, R. A. Schroeter, O. B. Crego and L. H. Diehl Jr.

Hills Branch WNFGA Elects New Officers

Members of Bloomfield Hills branch of Woman's National Farm and Garden association met at the home of Mrs. Earl Thompson, 401 Dunstan road, Bloomfield Hills, for their annual meeting and tea Monday afternoon.

Presiding at the tea table were Mrs. Henry C. Johnson, Mrs. Earl P. Shaw, Mrs. James Q. Goudie and Mrs. Leslie H. Green. Mrs. John D. Tekla, retiring president, presided at the meeting.

OFFICERS elected were Mrs. Irving H. MacKenzie, president; Mrs. John Q. Nagel, first vice president; Mrs. Carl E. Larson, second vice president; Mrs. Raymond T. Perring, assistant second vice president.

Others were Mrs. Howard Steg-

Back Home Again

Mr. and Mrs. Elliott S. Kinney of Walbridge drive, have returned from an extended trip to California, including Palm Springs, the desert area and San Francisco.

Tally-Ho Club's Schooling Show

The Bloomfield Open Hunt club was the scene March 27 when the Tally-Ho club presented a show. The exhibition was managed by Violet Hopkins and judged by Gabor Folteny. The entries, numbering over 85, were members of the Open Hunt, Grasse Pointe Hunt, Outlands and those riding with Charles Grant and Robert Egan. The 12 classes were divided into beginners, intermediate and advanced sections. Championship ribbons were presented to the riders who had accumulated the highest score in each section. Alison Cran of Birmingham, was awarded the advanced championship.

Visits New Mexico

Mr. and Mrs. Michael C. Ureel of Buckingham street, Birmingham, recently visited the world's largest and most spectacular limestone cavern, Carlsbad Caverns National Park in southeastern New Mexico.

You are cordially invited to view our new collection of

Spring Furs

Ready to Try On!

Furs by Robert

1550 Broadway
Also Grosse Pointe, Birmingham

For Easter Time



Free
Necktie
Anyone?

Pure
Silk,
Too!

We're giving one of these away with each Summerhaven suit we sell from now until Easter.

This Is The Summerhaven

Breeze light, wrinkle-defying. Fashioned from a Dacron and wool fabric. In plain or plaid, check or stripe. Crafted for value by Curlee at \$65.00

Manhattan Olive is a new spring color we're featuring. Take a look at it. It's quite distinguished.



just \$65.00

PAUL Custom Tailor

(Tailor to 198 of the best-dressed, and thriftiest, men in Birmingham and Bloomfield.)

213 E. Maple

MI 6-6474

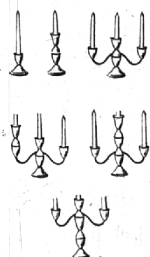
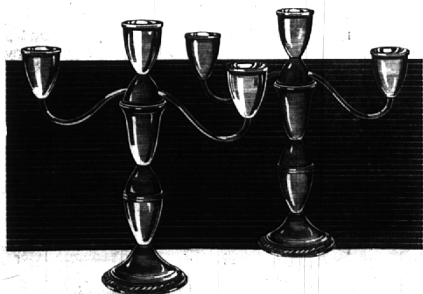


WOODWARD
at
MILWAUKEE

For Toll-Free Suburban Service,
Phone ENTERprise 6556

Elegant Sterling Silver Candelabra

. . . To Use Six Ways



With the new "Sextette" you can create the perfect candle light setting for every festive occasion! The handsomely styled Candelabra Sextette is 9 1/4" tall with a 10" arm spread—unscrews in sections so you can change the height and style six different ways for candle-light beauty wherever you want it! The beautifully detailed Candelabra, of weighted sterling, is available with rich gadroon or plain border. Buy now for yourself or impressive gift-giving at this surprisingly low price.

19^{95*}

*Plus Federal Tax

Gifts—Downstairs



You are invited to
a LANZ event
a special

TRUNK SHOWING

by Mr. Jerry Carman
of

SPRING & SUMMER FASHIONS

Saturday, April 9th
informal modeling
all day

**THE
VILLAGE STORE**

GROSSE PTE. BIRMINGHAM SAGINAW ANN ARBOR
TU 4-7180 MI 4-7180 PL 2-5747 HQ 5-4482