

It is in the environment of misfortune, of struggle and strife, of overcoming problems, that the real metal of mankind is forged into strong steel. Rare, indeed, are those who cannot appear to be enjoying prosperity . . . but it is in times of adversity that the nature of one's real character is revealed. That is when strength of head and heart is needed to win out.

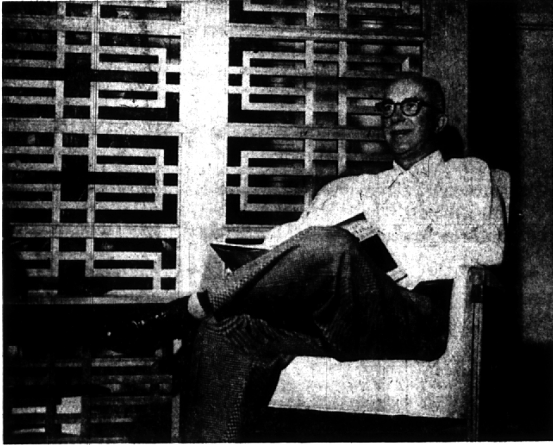
The Birmingham Eccentric

BIRMINGHAM, MICHIGAN

Thursday, September 24, 1959

SECTION
B

He Lives with Design at Home and at Work



He'll be talking about "Design As It Affects Today's Living" when he speaks before the Friends of the Baldwin public library at 8:15 p.m. Tuesday. Design affects LeRoy E. Kiefer's living today and every day in the streamlined new Bloomfield Hills home he designed for himself, his wife and two sons. As sleekly modern and handsome as the products he and his staff of 75 General Motors stylists design, the house is

plentifully furnished with built-in conveniences for modern living. Among the Kiefer designed decorating touches are two huge grille-work panels partly shown above. They divide the big living room from an adjoining hall, or fold back for spaciousness. Making and finishing the cherry grille-work was a do-it-yourself project in the Kiefer workshop last winter.

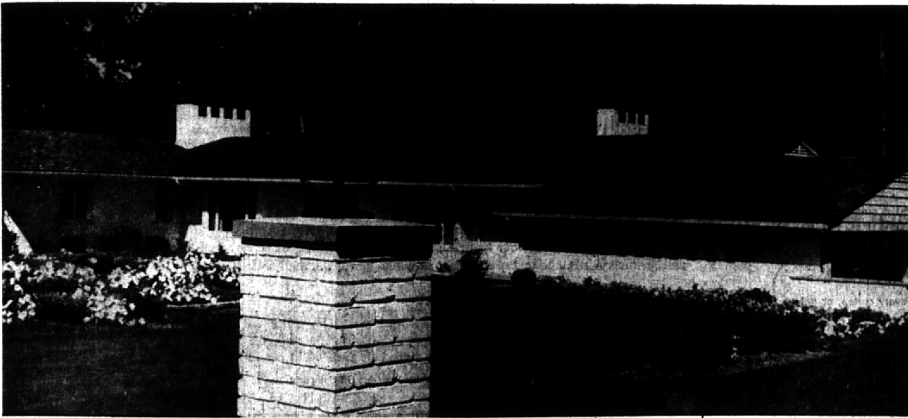
From the kitchen at 720 Kennebec court, Bloomfield Hills, Mrs. Kiefer sends out the call to breakfast over a special sound system which includes a speaker in the back yard. The kitchen is laden with the most modern Frigidaire appliances, with customized storage compartments from the Kiefer home drawing board. (Kiefer is in charge of all GM product and exhibit design). A solid wall of cupboards contains dozens of small doors, to expose only a minor portion of shelf space as supplies are removed. Kiefer designed special stainless steel cupboard handles. One corner contains what his wife calls "the world's laziest Susan."



Relaxing on the rustic steps which lead from the enclosed terrace behind the house are John Kiefer, 16-year-old Cranbrook school student, and the family cat. Built with old Grand Trunk railroad ties, the steps contrast with the house's contemporary interior, but form a perfect blend with the

wooden ravine viewed from the terrace high above it. It took the Kiefers a while to find patio bricks with the same massive feel of the railroad ties. They found them being removed from the streets of Detroit, near the Cobo hall area.

It looks like a paneled wall, but even the Kiefer terrier knows that there's a bar concealed behind the bleached-oak-paneled squares. Located in the den whose big picture window looks out onto the terrace and beyond, the tiny bar is revealed when the paneled double doors open up. The bar, complete with sink, and a card table storage closet beside it, are located in space above a stair well. Oak beams and coral coloring in the attractive den's ceiling are extended over the terrace beyond it.



Perched atop two white brick pillars in front of the new Kiefer house are old gas light globes imported from Antwerp, Belgium. The Kiefers reconditioned the Belgian lights and wired them for electricity. Now they illuminate each end of the curved drive leading to the front door of the big white brick house. The house is roofed with a

Kiefer favorite, split cedar shake. On the interior of the house, new features are still being added by designer Kiefer as he dreams them up. As Mrs. Kiefer explained when she pulled out a built-in drawer made especially for storing silverware in her dream kitchen, "When a person is creative like this, you're never through with building."

Naomi Ashley
and Phyllis Oney
Formerly Employed in Birmingham
Have Now Joined Our Staff
we feature **STREAKING, TIPPING**
and **FROSTING**
hair designs
by **MR. ARNOLD**
23708 Woodward, Pleasant Ridge
2 doors North of Woodward Heights
LI 1-1788 . . . Wed., Thurs. or Fri. eves by appt.

Your good taste
deserves the finest—
CUSTOM FURNITURE
We create our custom pieces to subtly blend with your home and preferences . . . for comfortable, smart living.
ELLIOTT'S of Waterford
Fine Furniture and Quality Carpeting since 1924
5400 Dixie Highway OR 3-1225

COUNTER TOPS
• Formica
• Vinyl
• Linoleum
ESTIMATES WITHOUT OBLIGATION
REPLACEMENTS NEW INSTALLATIONS
T. E. HOGAN CO.
2865 WOODWARD AVE.
(3 Blks. S. of 12 Mile Rd.)
AMPLE PARKING LI 4-3300 OPEN FRIDAY EVENS

pail after pail after pail . . .
there's always plenty of hot water
the new electric water heater way
House cleaning is so much easier, so much faster when there's plenty of hot water.
You can be confident that an electric water heater, plus Edison's Super Supply Plan, will provide round-the-clock hot water for cleaning and all the rest of the family's needs, too.
Here's the convenient, modern way to **GET IT HOT . . . GET A LOT** for an operating cost as low as \$3.88 per month.
Only electric water heaters give you all these important advantages:
 Efficient—the heat goes into the water
 Fast—new, more efficient heating units
 Install anywhere—need not be near a chimney
 Outer shell—cool to the touch all over
 Long life—meets Edison's rigid standards
 Edison maintains electrical parts without charge
 Automatic—all the time
 Safe—clean—quiet—modern
See your plumber or appliance dealer **DETROIT EDISON**
SERVES SOUTHEASTERN MICHIGAN