

CLEAN-UPS

are not always for profits. Sometimes they are for "getting rid of" or "improving the looks of" or "making a place for." For instance:—

COLCHICUM—These magic bulbs are beginning to bloom in our cartons. See last week's Eccentric for details.

LAWNSWEEPERS — We must cooperate and sell these at well below normal profit to make room for something a bit more stable.

20" PARKERETTE—Regular \$36.50
Clean-Up \$24.95

28" PARKERETTE—Regular \$45.50
Clean-Up \$29.95
No Returns

"The best sweeper in the business is the 28" SPRINGLELD. The price of this easy to move, easy to adjust, 8-bushel sweeper remains at \$59.95)

LAWNS — That is, the dead spots in same, should be raked out with a True Temper Broom Rake or a T.T. Garden Rake, mowed with a Dille & McGuire hand mower set very low—and then fertilized with AGRICO 10-6-4 Regular or V.F., and seeded with WOODRUFF'S or RECAL'S mixtures. These areas will be clean and green in two weeks.

RUBBER HOSE—A few lengths that remain in our hair and must go!

SWAN-BLACK— $\frac{3}{4}$ "-50 — Reg. \$7.45 Clean-Up \$5.45

WEDGE WAY-GREEN— $\frac{3}{4}$ "-50 — Reg. \$8.95 Clean-Up \$6.95

(NO HOLDS — NO DELIVERIES — NO RETURNS)

YOUR GARAGE—Please do not embarrass us by trying to return out-of-season items at this time—such as unused crabgrass killers. Keep it in the basement until next year.

"BAB-O"

McCLELLAN-BALL CO.
YARD SUPPLIES FARM KENNEL
BIRMINGHAM, MICHIGAN

Phone MJ 4-4133 850 S. Woodward



Takes a Big Bite

Here we have a sidewalk superintendent's eyeword of the Sportsman sport equipment store going up—or rather, down—at Pierce and Martin. The \$150,000 glass-walled, wooden-roofed structure is due for completion in December. Digging of the foundation was just recently completed.

There's more Homebuilding In Birmingham

Special to the Eccentric
NEW YORK—To what extent is home building contributing to the Birmingham economy? How does the local rate of housing construction compare with that in other communities?
Answers to the questions come from the Bureau of Labor Statistics of the U. S. Department of Labor, which has just issued its annual report on the number of new, non-farm dwellings that were authorized for construction in the past year. More than 7,000 localities are covered in the nationwide survey.

IN BIRMINGHAM, for its size, there was more home building than in most parts of the United States.

The report shows a total of 183 new dwelling units begun or authorized locally, exclusive of public housing, for a rate of 7.2 units per 1,000 population.

This was above the national rate of 6.5 units per 1,000 population and above that of the East North Central States, 4.8 per 1,000.

Although the nation was still in the midst of the depression during the first half of last year, home building showed unexpected strength. It was a big factor in the recovery, producing 1,038,000 privately-financed dwellings with a market value of \$17.9 billion in the year.

REAL ESTATE experts contend that the building upturn was due principally to the favorable money market, which made mortgage financing easier to arrange.

In Birmingham, the 183 private dwelling units scheduled for construction in the year represented \$3,392,000 in value, based on the median price in the region of \$18,533 per unit.

Despite the fact that financing is getting tighter now and that construction costs are up, builders and real estate men all over the country are predicting a continuing boom in home building.

They base their outlook on the number of new family formations and the trend toward larger families as well as on the fact that people are coming to look upon home ownership as representing a certain financial stability in this time of rising rents. The longer they wait, they figure, the more it will cost.

My Neighbors



"I can see the old gal now— stomping around in her flat heeled shoes, kicking at the dog, snarling at the cat..."

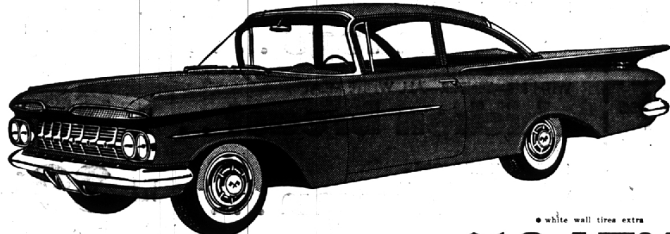


"The time to start arranging to have pleasant memories when you're old—in when you're young!"

The Light Touch by Jeanne Westerdale

FAMED BY PROXY
Like the cat who ate the canary,
Like a spouse who took all the blame,
I'm feeling self satisfied, very—
A celebrity called me by name!

We're gonna sell a lot of cars... cause
We're Trading **HIGH**
ON 1959 CHEVROLETS



while wall time extra
BISCAYNE 2-DOOR, 6 PASS. \$1847³⁶
ONLY 56 NEW CARS LEFT

PARKWOOD 6 PASS. WAGON
Powerglide, 156 h.p., V-8, oil filter, deluxe heater, 2-speed wiper, washer, Sapphire... **\$2607³⁸**

IMPALA 4-DOOR HARD TOP
Turbohide, 230 V-8, deluxe heater, p.b. radio, wheel disc, oil filter, power steering 2 speed wiper washer, EZI glass, white walls, bumper green, green trim... **\$2778⁶⁰**

BEL AIR 2 DOOR
Power glide, del. heater, 2 speed wiper, washer, 136 h.p., Hi-Drive engine, white black sapphire, beige and gold... **\$2226⁵⁵**

PARKWOOD 6 PASS. WAGON
Turbohide, del. heater, wheel covers, oil filter, power steering, 2-speed wiper, washers, EZI glass, saddle dash, construction rear axle, 128 radio... **\$2856¹⁶**

BROOKWOOD 4-DOOR 6 PASS. WAGON
Powerglide, del. heater, oil filter, 2-speed wiper, washer, deluxe accessory group, 156 h.p., V-8... to chrome, white & red, white & sapphire... **\$2557⁵¹**

IMPALA 4-DOOR HARDTOP
Turbohide, turboheat, del. heater, P.B. radio, rear antenna, dummy rear antenna, wheel disc, oil filter, power steering, 2-speed wiper, washer, EZI glass, power brakes, saddle dash, w.c. tires, air suspension, S.V. mirror, white and sapphire... **\$2986⁰⁰**

IMPALA 4-DOOR SEDAN
Powerglide, 156 V-8, deluxe heater, oil filter, power steering, 2-speed electric wipers, washer, power brakes, 2-tone blue, blue trim... **\$2627³³**

BEL AIR 4-DOOR SEDANS
Powerglide, 155 hi-thrift 6, del. heater, 2 speed wipers, washers, black, red, beige or sapphire... **\$2268⁵⁵**

BEL AIR 4 DOOR SEDAN
Powerglide, oil filter, 145 h.p., V-8, 2 speed wiper, washers, del. heater, front blue... **\$2367²⁶**

BISCAYNE 4-DOOR SEDAN
145 h.p. V-8, powerglide, oil filter, del. heater, 2 speed wipers, washers, deluxe accessory group... **\$2274⁷³**

NORTH CHEVROLET

SALES TILL 9:00 — SERVICE TILL MIDNIGHT
1000 S. Woodward, Birmingham—MI 4-2735

DO YOU LOVE Colonial?
DO YOU LOVE Solid Maple?
DO YOU WANT TO Save Steps?
Then you'll choose this practical
DROP LEAF Serving Cart

DECORATIVE AND USEFUL TO USE ANYWHERE AND EVERYWHERE **\$49⁹⁵**

So RIGHT for today's way of living and serving, that no home, in the Early American tradition, should be without one of these versatile good looking carts. When the leaves are up, the top is 30 x 37 inches... big enough for buffet serving, too. Two roomy shelves, a drawer, and 13 inch rubber tired wheels add to its usability. Solid maple, of course, in a warm Salem finish, that blends perfectly with your other pieces.

come in, visit our
OLDE COLONY SHOP
See our complete lines of Colonial pieces and accessories
Shop in air-conditioned comfort

Phone U 3-1330
Royal Oak Furniture Co.
AT THE PARKING LOT
215 S. WASHINGTON AVE.
ROYAL OAK, MICH.
Open Thurs., Fri., Sat. Till 9—Free Customer Parking Across the Street

Send them back to SCHOOL

Looking sharp in their **SANITONE** Dry Cleaned Clothes

You can be sure clothes will look like new again because our Sanitone Dry Cleaning thoroughly cleanses and reconditions fabrics. Minor mending is free, too. But don't take a chance on being ready for that big first day... let us have those school clothes NOW!

SHIRTS Laundered...
In By 10:00 a.m., Out By 5:00 p.m.

Both of Our Modern Plants Feature Sanitone

Douglas CLEANERS
534 So. Woodward MI 4-1507

Brown's EXCLUSIVE CLEANERS
1794 W. Maple MI 4-2400

BIG BUY WEEKLY Special
Every Week—A Big Buy Super-Value

Kresge's The friendly store
Thursday Friday Saturday

Save To 18% Reg. 40¢/lb!
OLD FASHIONED SPANISH PEANUTS

This Sale Only **33¢/lb.**

Crunchy Fresh...
Delicately Roasted!

First time at this low price! Yes as fresh as an autumn breeze! Tasty, crunchy, lightly salted peanuts... the way granolas loved and use them... from a great wooden barrel! It's a delicious "Big Buy"... treat your family, friends. Buy several pounds—you save most!

Each Week Watch for our Big Buy Saving!

Exquisite Custom PICTURE FRAMING at Kresge's in Birmingham and Northland Center, all work guaranteed.

WEST MAPLE AT HENRIETTA
Every Day more people are awakening to KRESGE values.