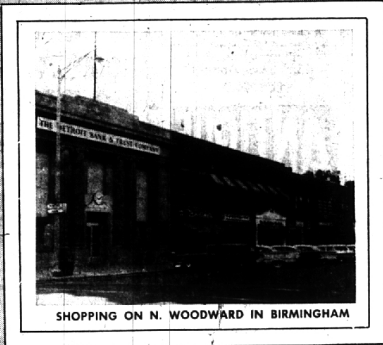


BIRMINGHAM



The Town of Friendly Shops

Reputable Merchants

One of your most important guides to good shopping is business reputation. A merchant must prove to you that he is worthy of your patronage by having established for himself a good name you can bank on. So important is reputation to a merchant that it is often included in the value of a business place under the name "good will".

Birmingham business places are well known for their unquestioned good repute and fair dealing. Through good service, the merchants of our town have made the name Birmingham synonymous with integrity.

Birmingham has a well established business community, but new businesses as well honor the traditions of fair play and good will of which our merchants are so proud. You can trust the merchants of Birmingham — the Town of Friendly Shops.

Did You Know . . .

Birmingham is a complete shopping area with such specialized shops as:

- A Leather Goods Store
- Sporting Goods Stores
- Camera Shops
- Specialized Food Stores

Look for it FIRST in Birmingham . . . Save Time and Shop Leisurely

McBRIDE HARDWARE CO.
154 So. Woodward Ave.

BIRMINGHAM CAMERA SHOP
Everything Photographic

WILSON DRUG CO.
In The Very Heart of Birmingham

THE VARSITY SHOP
Birmingham's Most Complete Sports Store

DAVIDSON'S
Woodward Avenue

DIMAS FURS
37 Years on Woodward Ave.

KAY COOLEY
Everything We Sell Must Travel Well

HIGGINS & FRANK
of Birmingham

BINGHAM & BINGHAM
Insurance

LAKES'
The Sterling Store of Birmingham

HARRISON'S LUGGAGE & LEATHER GOODS
233 E. Maple

S. S. KRESGE CO.
West Maple at Henricin

SHAIN'S REXALL DRUG STORE
Community Service Since 1906

HERBERT BURR SHOES
255 N. Woodward Ave.

herb ring—DISTINCTIVE JEWELRY
Suite 203, Leon Bldg., 286 E. Brown

ALICE'S WONDERLAND
Children's Shop

JERRY MORSE
Gentlemen's Attire

BIRMINGHAM BIKE SHOP
746 E. Maple

WILSON PONTIAC-CADILLAC, INC.
1350 N. Woodward

THE F. J. MULHOLLAND CO.
Birmingham's Oldest Department Store

RUDIN'S FINE FOODS
195 W. Maple

MILK'S APPLIANCES
1493 S. Woodward (4 blks. N. of 14 Mile)

LA BELLE'S
Gifts — Books — Stationery

BIRMINGHAM LUMBER & SUPPLY
1025 Haynes

SPIRE'S QUALITY MARKET
Awrey Bakery

JACOBSON'S STORES, INC.

McCLELLAN-BALL CO.
850 S. Woodward

MILLS PHARMACY
1740 W. Maple

LEWIS FURNITURE
235 Pierce

McSWEENEY'S FINE FOOTWEAR
Children's Fittings a Specialty

LEW BETTERLY MUSIC CO.
Across from Birmingham Theater

SMITH'S MARKET
Choice Meats

MAX BROOCK, INC.
Birmingham's Senior Realtors

CARTIER'S PAINT AND WALLPAPER
311 E. Maple

ELDON GENEROUS
Distinctive Tailoring

B'HAM PAINT, GLASS & WALLPAPER CO.
335 E. Maple

DICKINSON'S MEN'S WEAR
Wabeek Building

PECK'S MEN'S WEAR
108 S. Woodward, Cor. Maple

BIRMINGHAM FEDERAL
Savings & Loan Association

BOB FROST, INC.
479 S. Woodward

SNYDER, KINNEY & BENNETT, INC.
Complete Real Estate Service

Wabeek Pharmacy & The Prescription Center
296 W. Maple and 624 N. Woodward

ADAMS PHARMACY
Woodward at 14 Mile

THE INSPIRATION SHOP
Gifts and Art Objects

BODINE'S
The Greeting Card Shop

ACME QUALITY PAINT STORE
Color & Service in Our Business

BIRMINGHAM FRUIT CO.
124 N. Woodward

BIRMINGHAM HARDWARE
152 N. Woodward

HAWTHORNE ELECTRICAL COMPANY
Birmingham's Oldest Electrical Store

HUSTON HARDWARE
Birmingham's Oldest Hardware Store

RITTER'S BEVERAGES
Beer & Wine Delivered

QUARTON FOOD MARKET
1744 W. Maple—The Complete Market

GRINNELL'S

JOE STOLTZ
Custom Tailoring

HAR-TROM HI-WAY FURNITURE MART
1532 S. Woodward (4 blks. N. of 14 Mile)

MACHUS
Restaurant & Pastry Shop

THE CHEER SHOP
Your Child's Favorite Store

MORTIMER'S
Men's Style Center

UNUSUALS
150 W. Maple

BIRMINGHAM ELECTRONICS
141 East Maple

NORTH CHEVROLET COMPANY
1900 S. Woodward

ANDREW M. YEVICH
Manufacturing Jeweler

PRINCETON PREP SHOP
237 Pierce

SHERMAN SHOES
Featuring Florsheim Shoes

GWYNN'S
Men's Wear

YOUNG'S OF BIRMINGHAM
Featuring LeBow Clothes

JULIARD'S
Ladies' Distinctive Footwear

KAY BAUM

It's fun to shop in an atmosphere of neighborly friendliness!