

# YOU ALWAYS INVEST IN THE FUTURE

Think well of the future. You'll live in it and you'll always invest in it, too. Let us show you how easy it is to build for the future by investing wisely—out of income, monthly, if you wish. Drop in, write, or phone us for full particulars on investments in the future of our country.

For your convenience, we will be glad to make evening appointments.

## Watling, Lerchen & Co.

Members New York Stock Exchange

Creson Building • West Maple and Cranbrook Road  
Birmingham, Michigan

Midwest 6-9100 • Jordan 6-1527

Detroit

Ann Arbor • Jackson • Kalamazoo • Pontiac • Birmingham

Serving Michigan Investors Since 1916

# BUSINESS BRIEFS

## Roskilly Retires; 2 Area Men Promoted



MRS. ELEANOR VINALL

### Mrs. Vinall Joins Tool Engineer Staff

Mrs. Eleanor Vinall, 1668 Bates, Birmingham, has been appointed assistant editor of The Tool Engineer, official publication of the American Society of Tool Engineers, 10700 Puritan, Detroit.

A former women's editor and feature writer on The Birmingham Eclectic, she previously did public relations work for Atomic Power Development Associates, Inc., United Community Services of Metropolitan Detroit and the Detroit Council of Churches.

Mrs. Vinall majored in psychology at Bennington college, Bennington, Vermont, and is listed in "Who's Who of American Women." She is a member of the Public Relations Society of America, Y.M.C.A. of Metropolitan Detroit, International Institute, Michigan Alumnae Association of Bennington college and the American Committee for the Yugoslav Educational Experiment Project in Japan.

### NEED SOMETHING FOR YOUR HOUSE? Then locate it by reading or using the Classified Ads in The Eccentric each week.

Two Birmingham area men have been appointed to key positions in the Chevrolet manufacturing organization while a third executive has retired after 36 years with the company.

The changes, announced by Edward H. Kelley, general manufacturing manager, are: Spiestler J. Thrasher, 7075 Sherwood, Bloomfield township, director of quality control, becomes manager of the company's Detroit Gear & Axle and Forge plants, replacing A. R. Roskilly, Roskilly, 3825 Wedgwood, Bloomfield township, has retired.

EDWARD GRAY, 6785 Glenway, Birmingham, assistant chief engineer in charge of production engineering, succeeds Thrasher. A native of Amherstburg, Ontario, Thrasher started with Chevrolet 31 years ago as a grinder at the Gear & Axle plant and rose to foreman, general foreman, superintendent and assistant personnel director of the plant.

In 1941 Thrasher was made general superintendent of the company's Saginaw Transmission plant and in 1945 he was promoted to plant manager. In 1957 he moved to the Detroit central offices as manager of quality control. He was made director of that department earlier this year. While at Saginaw, Thrasher was active in chamber of commerce, safety council and other civic affairs. He has married and has two daughters.

GRAY, A WEST Point graduate who is brilliant, has an ordnance record during World War II, joined Chevrolet five years ago, in 1954 he was promoted to assistant chief engineer in charge of production engineering. This position he held for two years. He has worked at 13 manufacturing and four assembly plants of the company.

Born in Newark, N. J., Gray graduated from West Point in mechanical engineering at MIT. After completing an advanced officers' course at the Army Ordnance School, he was assigned to the Aberdeen Proving Ground. In 1941 he was promoted to chief of the tank test section. For more than a year Gray served as a member of the American Supply Mission to Russia.

HE RETURNED to Aberdeen as chief of the automotive division in 1945. He was promoted to works manager of the Watervliet arsenal in charge of planning, estimating and manufacturing cannon. A year later, with the rank of colonel, he resigned his regular Army commission. After serving as quality control director of White Motor Co. and later as general manager of White's coach division, Gray joined Chevrolet in 1954.

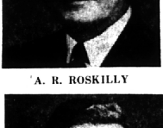


SVL J. THRASHER

EDWARD GRAY



A. R. ROSKILLY



EDWARD GRAY

ROSKILLY, the retiring executive, has a Chevrolet record that virtually parallels that of Thrasher. Roskilly, too, started with Chevrolet at the Gear & Axle plants as a grinder. He was promoted to foreman, general foreman, superintendent during the 26 years he served there. In 1945 he moved to Muncie, Ind., as manager of the Chevrolet plant there.

Between 1951 and 1955 he was in Tonawanda, N. Y., as manager of the company's aviation engine plant and aviation forge and foundry operations. In 1955 he was promoted to manager of the Detroit plants.

Roskilly, a native of Racine, Wis., is a field artillery veteran of World War I and was active in civic affairs in a number of cities where he served as a Chevrolet plant manager.

## Name Dr. Weston Medical Director

Dr. Earl E. Weston, 5685 Forman, Bloomfield township, has been appointed medical director of Vickers Incorporated, division of Sperry Rand corporation, according to announcement by C. D. Scribner, vice-president-personnel.

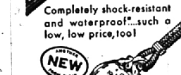
Dr. Weston will be responsible for the co-ordination of all medical and industrial hygiene activities among various Vickers plants and will be concerned on a policy level with company medical and health programs and preventive measures against injury and disease. He has been a Vickers plant physician for 16 years.

Landscaping Design and Construction  
**Lawrence E. Smith**  
135 N. WOODWARD  
in the Wilson Building  
Phone MI 4 2036

IMAGINE!  
ELGIN 17-JEWEL WATCHES  
NOW ONLY \$19.95



New ELGIN SPORTSMAN  
Completely shock-resistant and waterproof, such a low, low price, too!



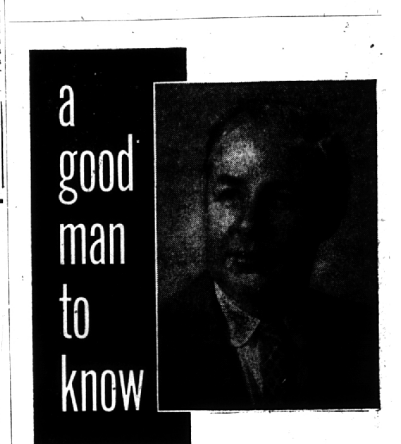
New ELGIN STARLITE  
The lady's watch that's right in design... Shock-resistant, unbreakable manspring, too!

\*When used, open end crystal case back.

Kincaid Jewelers  
205 East Maple Avenue  
Birmingham, Michigan  
Midwest 4-7830

## The Light Touch by Jeanne Westerdale

TOOTHPASTE HASTE  
One of us squeezes the tube with care, The other one grabs it no matter where; But I'm never pestered by this old teaser, For I am the don't-give-a-darn type squeezer!



## Meet Wilfred G. Gill

"Gill" has a natural feeling for the securities business plus a mature common-sense outlook, which may explain why he's one of Goodbody's outstandingly successful representatives. Gill has a well-rounded business background... worked for a while in the insurance field... spent eleven successful years in industrial sales, before deciding on his chosen vocation—securities! Gill is a tireless worker, especially for the customers he serves!

"Gill" is a good man to know as a specialist on brokerage advice and service and an expert when it comes to securities. He is always abreast of the market, thanks to a constant flow of current facts and forecasts supplied to him by Goodbody's well known and highly respected Research Department, a pioneer in its field. That's why Gill is a good man to know. Call him today at:

GOODBODY & CO.  
MICHIGAN LIFE BUILDING  
N. WOODWARD NEAR 13 MILE  
Other Michigan Offices  
PENSACOLA BLDG. 130 WEST FIRST STREET  
DETROIT FLINT  
38 National Offices

## Medical Mirror

WHAT DOCTORS SAY ABOUT

### Delayed Speech Calls for Action

Diets and Herbs

Q. I am 55 and have hardening of the arteries. Would diet or drugs help?—A. Conn. reader.

A. Sclerosis or "hardening" of the arteries is perhaps slowed down by limiting the intake of dietary fat in instances where the blood shows more fat than is considered normal. Although blood fat is not the only cause of hardening of the arteries, it seems to be a definite factor. There is at this time no drug that will prevent "hardening" of the arteries or reverse the process once it starts. However, doctors do prescribe certain drugs which have been found helpful in improving blood flow through the arteries or less narrowed, "hardened" arteries.

This is drug used in every meaning of the word—rendering truly professional prescription service with an uncanny ability to detect health aids and sicknesses.

Answers do not necessarily reflect the opinion of all doctors. The diagnosis and treatment of disease is the function of the patient's personal physician.

ALWAYS A PLACE TO PARK

## MILLS BRICKERY

1740 West Maple Ave Phone: Midwest 4-5060



## SEED YOUR LAWN NOW for a carefree carpet of green!

Only FERRY-MORSE lawn seeds are formula-blended for Michigan soil and climate! A lawn that's thick, tough, easy to care for... that's your lawn when you plant or reseed with FERRY-MORSE lawn seeds! Each blend is scientifically prepared to give you exactly the type of turf you want! Your FERRY-MORSE dealer will help you pick the blend that's best for your lawn!

Exclusive FERRY-MORSE Newport Kentucky Blue Grass "Cl" - new, denser, deeper-green, harder blue grass for a lovelier lawn than ever before!

FERRY-MORSE SEED CO., DETROIT, MICHIGAN

ASK FOR FERRY-MORSE LAWN SEED BLENDS  
PROFESSIONAL • WESTERN HOME • SUBURBANITE



### GREETINGS & GIFTS

are brought to you from  
Friendly Neighbors  
& Civic & Social Welfare  
Leaders  
through  
WELCOME WAGON  
On the occasion of  
Change of residence

Arrivals of Newcomers  
to Birmingham

MRS. H. WALES PRICE  
Midwest 4-0516  
(No cost or obligation)

### LEGAL NOTICES

MEETING TO REVIEW DEFICIENCY SPECIAL ASSESSMENT ROLL NO. 218 AND TO HEAR OBJECTIONS TO THE SPECIAL ASSESSMENT ROLLS NO. 218 AND 219 IN THE CITY OF TROY, MICHIGAN.

PLEASE TAKE NOTICE that the City Commission will meet in the City Hall on Monday, the 14th day of September, 1959, at 1:30 o'clock P.M. for the purpose of reviewing said ROLL NO. 218 and all objections thereto and of hearing any and all objections to said ROLL NO. 218 made in accordance with the following described improvement:

Replacement of water mains, hydrants, valves and other appurtenances in the following district and street as follows:

District No. 29B  
From  
Lansing Adams Eastbourne  
Bollinger Adams Padinton  
Sundridge Adams Palmerston  
Linton Sundridge Lanser  
Palmerston Palmerston Langran  
Palmerston Sundridge Newgate  
Newgate Palmerston Langran  
Eastbourne Palmerston Langran  
Beach Palmerston Langran  
Eastbourne Palmerston Langran

The Assessment Roll is on file in the office of the City Clerk for public examination. The special assessment thereon contained herein has been assessed according to law against the Special Assessment District No. 29, which District is described as follows:

District No. 29  
Supervisor's Plat No. 27  
Lots 25 to 27 inclusive; Outlot A and Outlot B  
Lots 25 to 27 inclusive  
Lots 25 to 191 inclusive

The above assessment and all proceedings upon which they are based shall be contestable, unless suit to contest the validity thereof is instituted within thirty (30) days after the date of confirmation of said Special Assessment Roll No. 29B, Michigan, this 24th day of August, 1959.

J. Lawson Lockhart,  
City Clerk 26-27-28

Elmer F. Grieron, Atty. at Law, 910 Ford Bldg., Detroit 26, Michigan  
To 23-229

STATE OF MICHIGAN - The Probate Court for the County of Oakland.  
In the Matter of the Estate of GEORGE PLANCON, Deceased.  
At a session of said court, held at the Probate Court in the City of Pontiac, in said County, on the 24th day of August A.D. 1959.  
Present, Honorable Arthur E. Moore,

BIRMINGHAM  
CAMERA SHOP  
168 So. Woodward  
Phone Midwest 4-0510  
If You Don't Know Cameras - Know Your Dealer  
Oakland County's Oldest  
22d YEAR SERVING BIRMINGHAM

## BIRMINGHAM HOUSE MOTEL

### HUNTER BLVD. & MAPLE ROAD

Proudly announces the availability of air-conditioned conference room accommodating to 40 persons—with all essential items for a successful meeting. Your interest and inspection is cordially invited.

ALSO 38 AIR CONDITIONED DELUXE GUEST ROOMS  
Reservations Cheerfully Accepted and Confirmed

PHONE Midwest 6-7300  
Jordan 6-4620  
Teletype BM 761

C. A. DALLMANN  
Manager

Judge of Probate.  
Order Appointing Time for Hearing Notice is hereby given and it is hereby notified that the time and place for hearing on claims against the above estate shall be the 2nd day of November, 1959, at nine o'clock in the forenoon at the Probate Court in the County of Pontiac, Michigan.

All creditors or claimants against the above estate are further notified and ordered to give their claims at said hearing and prior to said hearing to file their claims containing the date and with the fiduciary of the estate the claim containing the date and reasonably to inform the fiduciary of the nature and amount of the claim.

It is further ordered that notice be given to all interested parties as shown by the record in this estate by delivering a copy of this order and notice to each of them personally, or by mailing such copy of them by registered mail with return receipt demanded addressed to their respective last known addresses as shown by the files and records in this estate.

And it is further ordered that public notice thereof be given by publication of a copy of this order and notice to said day, bearing in mind the BIRMINGHAM EVENING NEWS, a newspaper printed and circulated in said County.

ARTHUR E. MOORE,  
Judge of Probate. 26-27-28

Thousands of people read The Eccentric Classified Ads. So, remember if you want to sell that hard-to-get-of article, advertise it in the Want Ad section of The Birmingham Eccentric.

## a man's shoe color

# spice brown

## by FREEMAN



An unusually rich dark leather shade... ideally suited for the darker apparel tones in your fall wardrobe. See this color triumph in the newest Freeman styles.

Freeman Scimitar—Spice Brown Textured Calf; also Black Calf. \$19.95

FREEMAN SHOES  
\$11.95 to \$29.95

Also fine Selection of Banister Shoes

Higgins and Trunk  
WABEEK BUILDING  
BIRMINGHAM