

How wonderful if in our adult world we had the healing, comforting help of the Mother-heart . . . the one who binds up the little and big hurts of childhood . . . who in sympathy guides us away from many harms . . . who never ceases to encourage . . . to wipe away our tears with her smiles . . . how wonderful if adults could have more such sustaining hands. What wonderful possibilities life offers!

# The Birmingham Eccentric

BIRMINGHAM, MICHIGAN

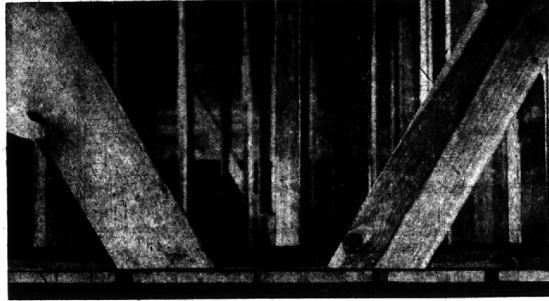
Thursday, September 10, 1939

SECTION  
B

## A Study of Line and Design in Construction

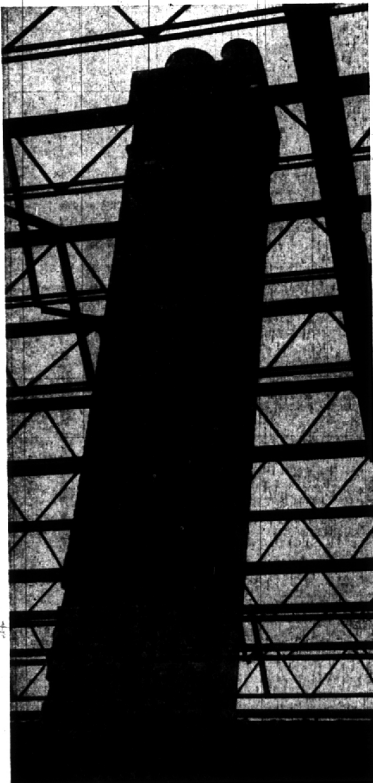


Man often creates beauty without deliberately intending it. Putting materials together to serve an often very unglamorous purpose, he sometimes comes up with eye-appealing designs. Design and eye-appeal are both frequently the result when things are brought together according to a plan. Here a pipe rests casually against a wall of the soon-to-be-completed Southfield city offices, where it will remain for many years.

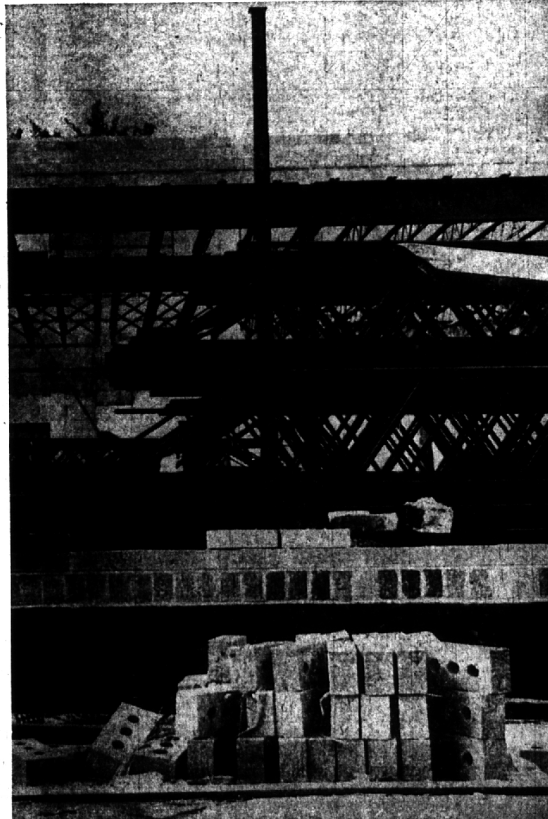


To find the beauty, a slower, closer look is sometimes needed, as here. Skeletons of wood (top picture) will soon disappear—encased in walls. They will stand in formation, doing their job unseen for many years.

A stairway (next one down) to oblivion mounts into space and then curves gently on its way to nowhere in what will soon be the Franklin fire station.



A different slant will often ferret out the design in every day things, the beauty in the design. Here "the old order changes," but not entirely. This smokestack at the MacManus, John and Adams offices, Woodward and Long Lake road, stands guard as a new building goes up around the old.



Steel trusses stand at a rigid "parade permanent plan. They are expected to stay rest" while a pile of bricks just rests—all waiting to take their final place in a more the M. J. & A. building.

wash after wash after wash . . .



there's always plenty of hot water



the new electric water heater way

**GET IT HOT . . . GET A LOT** for load after load of the cleanest, whitest laundry ever.

And washday or any day, you can be confident that an electric water heater, plus Edison's Super Supply Plan, will provide hot water for all other family needs, too.

Here's the convenient, modern way to **GET IT HOT . . . GET A LOT** for an operating cost as low as \$3.88 per month.

Only electric water heaters give you all these important advantages:

- Efficient—the heat goes into the water
- Install anywhere—need not be near a chimney
- Long life—meet Edison's rigid standards
- Automatic—all the time
- Fast—new, more efficient heating units
- Outer shell—cool to the touch all over
- Edison maintains electrical parts without charge
- Safe—clean—quiet—modern



See your plumber or appliance dealer **DETROIT EDISON**  
SERVES SOUTHEASTERN MICHIGAN

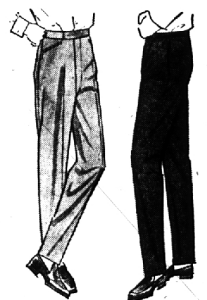
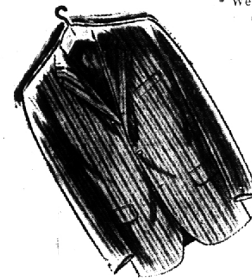
## Fall SPORTSCAST IN CASUAL CAMPUS CLOTHING

We're projecting the campus styles that will be prevalent at college this fall . . . and around our community where the college influence is adhered to!

### SPORT COATS

The new dark Ivy tones dominate our selections.

from \$35.00



### SLACKS of the NEW SEASON

Continental and Ivy Styles

- Polished Cottons . . . . . \$ 7.95
- Corduroys . . . . . \$ 9.95
- Continental Hopsacking . . . . \$17.50
- Other Ivy Slacks from . . . . . \$ 7.95

### DRESS SHIRTS

Button Down Oxfords, Tab Collars, Seasonal Spreads . . . mostly in wash 'n' wear fabrics.

From \$5.00

### HOSIERY

by Esquire  
In Tone Ribs

From \$1.00

### SWEATERS

PERRY COMO LOW CUTS

- BAGGY SHAGS
- BULKY KNITS
- ITALIAN NECKS

From \$11.95



White  
Crew Socks . . . . . 75c

Orlon  
Argyles  
\$1.50



**Dickinson's**

WABEEK BUILDING — BIRMINGHAM  
SAGINAW AT LAWRENCE — PONTIAC