

B'ham Thinking Of Lower Rates For Roadoling

Birmingham's 1959 roadoling program cost the city only one-eighth the amount which had been set aside for its share, according to a report from City Finance Director James H. Purkiss.

Special assessments levied against private property totaled \$22,262.17, while the cost was only \$22,160.07, or a \$103.10 saving, Purkiss said.

The city paid \$449.52 toward the program. Reserved for the city share had been \$4,000.

COMMISSIONER Charles R. Ruff said this calls for a look at next year's rates, which he thinks can be lowered so the city thus will participate in more of the program's cost.

This year's rates were 15 cents per front foot for light oiling, 24 cents for seal coating only, and 52 cents for new mat and seal coat. City Manager L. R. Gare said it might be advisable to seek bids on the 1960 roadoling program.

"Our philosophy is to do only work which it would be more expensive to contract," Gare said. "We haven't had bids on this type of work for several years, and I don't think it will be contracted next year. But by taking bids, we can see how close are the city and the private contractor's figures."

B'ham Doctor Speaks To Safety Group At Chicago Meeting

Dr. Robert J. Mason, staff member of St. Joseph Mercy Hospital, whose office is in Birmingham, spoke at the 47th National Safety congress in Chicago, Oct. 19 through 23.

Dr. Mason spoke on "Safety from poisoning in the home, the school and in the community."

Dr. Mason is Director of the Poison Control Center at St. Joseph Mercy Hospital and was instrumental in its formation three years ago.

DID YOU KNOW . . . you may locate magazine articles by using the Reader's Guide at Baldwin public library?



'Ready, Aim . . .'

Birmingham Police Chief Ralph W. Moxley (right) and Captain Milton Sackett of Southfield, squeeze-off a few rounds in the recent second annual South Oakland Police Pistol shoot. Moxley was high man in the police chiefs' competition with 173 out of

a possible 200 points. Birmingham detective Richard Chambers was high man in the timed fire division and took second with his total score. The Birmingham team of Chambers, Douglas, Marble and Gerald Brown tied for fourth place in a field of 25 teams.



Troop B-33 Tours Selfridge

Approximately 20 Cub Scouts from troop B-33 in Birmingham and their parents attended a tour of facilities at Selfridge Field on Oct. 11. The tour was arranged by the Norman Lyle Squadron of the air force Association and Colonel James McPartlin, commanding officer of the 403rd troop carrier wing.

The group, which was guided by 1st Lt. Jack Desjardine, visited the parachute section and saw the paratrooper carrier aircraft followed by a taxying demonstration by Lt. Ing several of the cuts as models.

We Heard It Said By:

Republican National Chairman Thurston B. Morton, junior senator from Kentucky: "Politics is a day-in and day-out business. We Republicans must learn that it can't be turned on and off and still be effective. We've got to get the salesman (president workers) to sell it!"

They also toured the operations section and reviewed the routine followed by pilots filing for a flight together with an explanation of the function of the weather station.

The group enjoyed a detailed inspection of the giant C-119 paratrooper aircraft followed by a taxying demonstration by Lt. Ing several of the cuts as models.



Teaches to Play

Walter Schrott, director of music has announced the addition of Lam F. Rouse, Jr., to the piano faculty of the school. Rouse is a graduate of the American conservatory in Chicago and is presently serving as music director of St. Andrews Episcopal church, Drayton Plains. In past years he was active in the State department

cultural program and served as accompanist for the Symphony chorale in Yokohama, Japan.

Looking for a pet for the children? See the Classified columns under "Pets for Sale."



Face and Feature Corrections
Face Peeling
Carolyn Nilson,
Stockholm graduate
Her Cosmetics are
World Famous
772 E. Maple MI 6-7873

DANBY'S

This is one of a series of extra special values we are offering throughout the month of October.

Lucky Special!

Polished Cotton SURCOAT

Orlon and Quilted Plaid Lining

\$15.89

- Zipper Fly Front
- Style Knit Trimmed
- Giant Zipper Closure
- Washable TAN COCOA
- SIZES 36 to 46

TAN color also available in Longs and in sizes 48-50 \$16.89

122 WEST MAPLE MI 6-1589

Charge Accounts Invited! OPEN EVERY FRIDAY EVENING TO 9 P.M.

DANBY'S

... Thanks to the Medics'

Despite two crushed vertebrae suffered while on active duty with the Air Force reserve at Selfridge Air Force base, Major Harold Seestadt continues to contribute to the operation of the Norman Lyle Squadron of Birmingham and Bloomfield Hills. Seated with him is Colonel James McPartlin, Wing Commander of the 403rd Troop Carrier Wing at Selfridge and also Vice Commander of the Norman Lyle Squadron, and R. G. Saltzman, Commander of the Norman Lyle Squadron. Major Seestadt credits prompt big share of the responsibility for the fact that he has never suffered from any paralysis despite the fact that he came within a quarter inch of death itself.



NOW ON DISPLAY

the new **Ventura** by Pontiac



Get a fresh point of view on how luxurious a moderately priced car can be

DUE TO THE STEEL STRIKE

The supply of 1960 Pontiacs has been cut off by the factory. Ordered cars cannot be delivered until the first of the year. HOWEVER, we have on hand a large supply of all models for immediate delivery because we are Oakland county's volume Pontiac dealer.

ACE WILSON'S
ROYAL PONTIAC
ROYAL OAK
OAKLAND COUNTY'S LARGEST VOLUME DEALER

NOW!

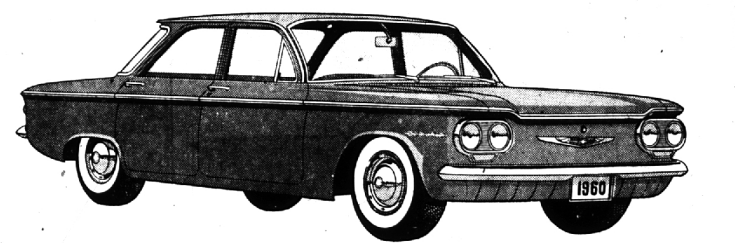
THE REVOLUTIONARY

Corvair

BY CHEVROLET

WITH THE ENGINE IN THE REAR WHERE IT BELONGS

***** IN A COMPACT CAR!**



The only American car with an airplane-type horizontal engine!
The only American car with independent suspension at all 4 wheels!
The only American car with an air-cooled aluminum engine!

Here, for the first time, is a truly compact, economical American car that retains the ride and 6-passenger comfort you're used to in a big one. The key to this small miracle: America's first and only rear-mounted aluminum engine—a revolutionary 6-cylinder power plant that combines compactly with the transmission and drive gears in one lightweight package. It works small wonders with mileage and—because this engine is air cooled—you'll never have to fuss with antifreeze.

Floor's practically flat—for more foot room. Corvair's size—makes it a joy to jockey through traffic and park in tight spots. Yet its unique Unistrut

Body by Fisher offers plenty of room for 6 broad-shouldered passengers. And, thanks to Corvair's rear engine, the floor is virtually flat, front and rear, so there's generous foot room for everybody. Easy handling without power assists. Shifting engine weight to the rear also adds extra ground-gripping traction and gives better compact car handling and braking. And with independent suspension at all 4 wheels, Corvair rivals much more costly cars in the poised, unruffled way it rides. A price your budget will appreciate. Wonderfully practical as all these advances sound, you'll find the most practical thing about this new Corvair is its price.

Oakland County's only Chevrolet dealer with Nite Service for your convenience.

NORTH CHEVROLET
1000 S. WOODWARD, BIRMINGHAM MI 4-2735

install **Storm sash** now!

WINTER-LONG COMFORT!
CUTS YOUR FUEL BILLS!
KEEPS HEAT IN!

Storm Sash provides insulation at windows to keep the cold outside and stop heat from escaping. Made of finest Ponderosa Pine, these Sash are easily installed . . . you can paint them yourself and save!

FROM AS LOW AS **\$4.14** Each 16 x 16, 2 L.L.

insulating BUILDING BOARD 7¢ Sq. Ft.

Comb. STORM-SCREEN DOOR Weather-treated Pine, 2-6x8. Take out screen panel. Insert glass panel to keep out cold winds. **\$17.50**

Birmingham Lumber AND SUPPLY COMPANY, INC.
1025 HAYNES STREET
PHONE MI 4-3636

Between Hunter & Adams—5 Blocks South of Maple
Hours 7:30 to 5:00 Mon. thru Fri.; 7:30 to 1:00 Sat.

STORM SASH ADDS TO THE COMFORT OF YOUR HOME—WINTER AND SUMMER!