

# Novices' Tests Test Policemen's Nerves

By DENI SCANLON  
Staff Writer

"A shift of gears, a cloud of dust and a hearty 'Heigh ho auto.'"

The beginner rides again!

From out of the west, West Beverly Hills) comes a story of one aspiring car pilot who "backed" into her drivers' test.

"When a local lady edged her car confidently from its parking slot," Beverly Hills Sgt. Floyd Rath relates, "she maneuvered dangerously close to a ditch." With one fell swoop of her foot she hit the brakes like a professional.

"Well, Sgt. Rath continued, 'I guess it did look odd to passers-by when she and I both crawled out of the ditch, but that's not near so startling as the look on her face when she got a ticket for defective brakes!'"

FROM THE WEST to the south (Southfield City) comes the torrid tales of drivers' tests on North-western highway.

"Ohhhh, that's murder!" officers say.

"Twice," one blue-coat stated, "I folded my hands and muttered 'God, get me through this one.'"

SOUTHFIELD SGT. Ed Ritenour still relates the episode about

the lady who was having a difficult time turning corners.

"As we drive in to the station," the Sergeant said, "I told her I didn't feel she qualified. She wheeled into the driveway and wham! . . . off came the drainpipe and we darn near went through the front door. I knew she couldn't turn corners!"

ANOTHER SOUTHFIELD sergeant, Richard Voorheis, chimed in with Ivy Davis of the license bureau to reveal this one:

A young man phoned to inquire about replacing a lost operator's license.

A half-hour later he drove into the parking lot, filled out forms, backed around the parking lot, backed around the corner, ran a stop street, and ended up again sitting in the police department.

This time the policemen were filling out forms.

IN BLOOMFIELD Hills the clatter of hoofbeats was heard one afternoon when former police chief Stanley Kevern beat it back to the department winded and dazed. A lady applicant had just taken him for a ride through the wide open spaces and the fence that enclosed it.

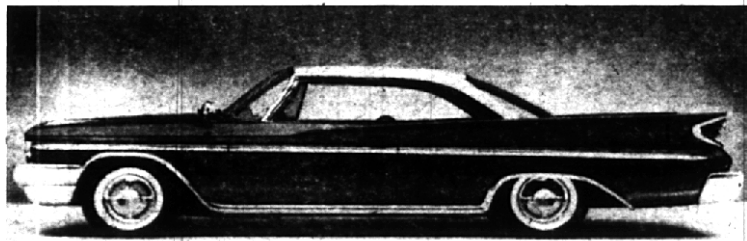
SMILES ARE seen in the Hills department when Capt. Walter Sluiter tells about the sweet young thing that kept asking him to show her the ropes of parking. Capt. Sluiter is the father of two and the grandfather of five, but he was, nevertheless, flattered by her query.

"Be sure to say I told her to consult her dad for help on that," Capt. Sluiter stressed to this reporter.

Lt. Robert Schaulé of the Birmingham police department remembers his days of driving tests, especially the morning when one girl sideswiped three cars on Maple road before he could get the car stopped.

"Drivers really can give a policeman grey hair," Lt. Schaulé said, smoothing the few strands of silver at his temples.

"GUESS 'Heigh ho auto' and 'Silver' still are pardners.



## New DeSoto Adventurer

New styling, engine improvements and strengthened body structure mark the latest offerings of the 1960 DeSoto. Shown above is the Adventurer tu-door hardtop. Three

DeSoto models will be shown in two series that will feature engines designed to give maximum power with top efficiency.

## Chrysler Brings Out New Cars

Chrysler Corporation has brought out two completely new lines of automobiles for 1960 in hopes of duplicating the banner year of 1955.

A small compact car, the Valiant, and an economy sized Dodge, the Dart, make up Chrysler's latest offerings to the car-buying public.

### Valiant

The Valiant will be introduced to the public during the last week in October.

THE VALIANT four-door sedan will seat six passengers in comfort and will have plenty of space in its 25-cubic foot luggage compartment at the rear, he said.

It is powered by an efficient new 170-cubic inch six-cylinder engine that has "the horsepower to meet all motoring needs." For the best

possible handling and road stability, the engine was mounted in front, he said.

### Plymouth

For 1960, the Plymouth body and frame are integrated into a single, unified structure, locked together by more than 5,000 welds. The design affords many advantages in terms of both strength and space efficiency.

The cars are easier to get into and out of, and seat heights have been raised for more comfort.

### Dart

THE DODGE DART, Chrysler Corporation's new entry in the pop-

ular-priced field, has just completed a series of cross-country tests which show that the new, 1960 car is capable of 25, or more, miles per gallon at normal highway speeds. M. C. Patterson, general manager of Dodge Division, Chrysler Corporation, announced today.

The production cars were driven at a variety of highway speeds in order to duplicate normal vacation driving conditions.

### Dodge

Dodge introduced two all-new lines of roomy, comfortable cars with outstanding roadability and ease of handling—the Matador and the Polara.

These low-medium priced cars will be offered in 11 sedan, hardtop, station wagon and convertible models featuring a combination of the most important engineering and styling changes that Dodge has ever made.

### DeSoto

The 1960 DeSoto—the result of thirty-one years of research and engineering—features radically new styling changes and numerous detailed refinements.

Two outstanding examples of DeSoto's long range engineering program are the Ram Charge engine and Unibody construction.

### Chrysler

ROOMIER interiors are decorated in more expensive fabrics, especially the 1960 Chrysler New Yorker, which is being offered with the first all-wood broadcloth interior option since 1954. Broadcloth is available at no extra cost.

### Imperial

The 1960 Imperial's new silhouette features a wedge-shaped profile, and an elongated hood line reminiscent of classic imperial automobiles of the Thirties. Tailfins are adorned with Imperial's familiar gunsight tail light.

Between the chrome encircled lights is another familiar Imperial hallmark—Flight Sweep Decal.

## Ethyl Corp. Helps Automobile Progress

In supplying a variety of chemical additives, Ethyl Corp. plays a key role in improving petroleum products.

Right from its start, as the centennial slogan says, the petroleum industry has been "working for progress." It's no secret, however, that more of this progress has come in recent decades than in the pioneering era touched off by the Drake discovery well.

IN THE FIELD of fuels and lubricants alone, the giant strides of the last third of a century or so have helped double and redouble the scope and performance of motorized transportation, power farming and aviation.

Ethyl Corporation, which observed the 35th anniversary of its incorporation on August 18—just 9 days before the oil industry's 100th birthday—has been a partner in the astounding progress of pet-

roleum's more recent years.

In developing and supplying vital antiknock compounds and other additives for gasoline and related petroleum products, Ethyl has played a key role in the continuous improvement of fuels and lubricants—and automotive and aviation progress.

### Extra Bonus

The glove compartment door on the 1960 Plymouth has been designed to serve as a snack tray during refreshment stops on trips.

### Water Tight

Every 1960 Plymouth coming off the assembly line goes through a high pressure water test as severe as a tropical typhoon to assure that the car is water-tight.



B.F. Goodrich  
14" TUBELESS  
at a low price

**\$18.95\***  
7.50-14  
LONG  
MILER

Full size, tough tread  
14" Tubeless now  
available at a new  
low price.

SIZE	SALE PRICE <sup>1</sup>
800-14	\$20.95
670-15	\$18.95
710-15	\$20.95

\*Plus Tax and Retreadable Tire

B.F. Goodrich Smileage! starts here

# B.F. Goodrich

3342 W. 12 Mile, Berkley

LI 4-1800

# YOU ARE INVITED

TO TAKE

A

## DEMONSTRATION DRIVE

In The Car of Your Choice

THE NEW

# 1960 PONTIAC

WITH THE FRESH POINT OF VIEW

... THE NEW

# 1960 CADILLAC

STANDARD OF THE WORLD

With a Promise That You Will  
Experience Your Most Exciting  
Drive Ever.

# WILSON PONTIAC-CADILLAC CO.

Serving You Fairly For Over 10 Years

1350 N. Woodward

Birmingham

MI 4-1930