

your favorite  
**Shirtwaist**  
14.98

For your very first dress for fall... a light-weight sheer wool... covered buttons, self belt, inverted pleat in back. Brown, black, blue, green. 8 to 16.

PHONE AND MAIL. JORDAN 6-3777

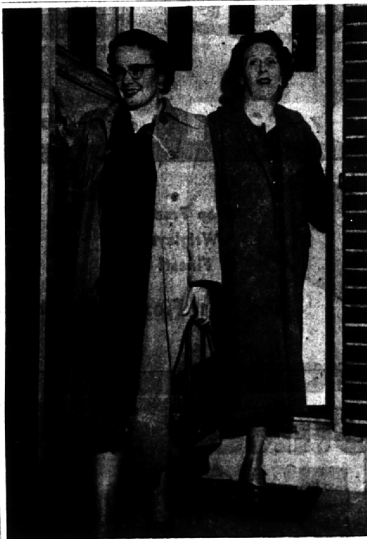
**Kay Baum**  
DESIGNER



## Hills Man Heads Committee

Plans for "Le Bal Moderne," to be December 5 amid the classical surroundings of the Museum of the Detroit Institute of Arts, have been announced by the Friends of Modern Art as one of the outstanding events of the season. Subscriptions by the 500 who will attend will be added to the funds provided by the Friends for the acquisition of notable pieces of contemporary art for the permanent collection of the In-

stitute. At the reception in the Park Shelton hotel, at which news of the impending event was disclosed are (from left) John E. Blomquist of Bloomfield Hills, men's committee chairman; Mrs. Isadore Levin of Detroit, chairman of the executive committee, and Alvan Macauley, Jr., president of the Detroit Museum of Art Founders society.

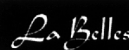


## Wayne Club Formed

Wayne State alumnae club of Birmingham will meet at 8 p.m. today at the Birmingham community house. The newly formed alumnae club had their organizational meeting last spring and are now preparing for their first year of activity. Two members of the club, (from left) Mrs. Bruce Aumann of Wiltshire road, Lathrup village, and Mrs. George Ritter of Sunset drive, met last week to discuss club plans. Following a get-acquainted and re-acquainted social hour, Dr. Thelma James of the English department at WSU will speak on UN Week and give highlights of her recent European trip. Alumnae are invited to attend.

## Personalized Christmas Cards

Choose at your leisure  
in Our  
Christmas Room  
Thousands of new designs  
to choose from  
—Now On Display—  
Holiday Decorations, Ribbons, Seals  
Gift Wrapping, Christmas Notes



BOOKS — GIFTS  
STATIONERY — ENGRAVING  
137 W. MAPLE

Radiodiffusion Francaise and Radio Luxembourg.

ARRIVING in America, Gerle made his debut last year at Town Hall and was acclaimed as a musician whose "intonation is flawless" ... a "musician's musician of the grandest order."

Guild's officers for the coming year are Max Fruhauf, president; Mrs. John Sanders and Mrs. Walter Skinner, vice presidents; Charles Klingensmith, secretary and Ronald Kasperzak, treasurer.



ROBERT GERLE

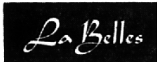
## Lamps - Lamps - Lamps

A Wonderful New World Can Be Yours

## LAMPS

can be the answer—see our beautiful new selection, as you change your arrangements this fall by adding—

New Lamps



137 W. MAPLE

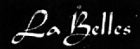
## Lamps - Lamps - Lamps

## Spode Cowslip



From 1790 to 1830 there were scores of artists working at the Spode factory designing new patterns to meet the growing demand for this fine ware. These men had little to inspire them except the flowers of the rolling fields around Stoke. So well did they work that the sturdy individual styles of natural floral designs which they developed will live on through all time. The simplicity and charm of Cowslip—done on the famous Chelsea Wicker shape—is an example of their work. The refreshing colors and delicate shape are correct for any period from the Traditional Georgian to the present.

Order odd pieces now to fill your pattern



137 WEST MAPLE

USE ECCENTRIC CLASSIFIED ADS FOR BEST RESULTS

## Any MUMMY can make DRIED ARRANGEMENTS with

- ARECA BOOTS — Red - brown inside, grey outside. (can be shaped)
- FISH TAIL PALM — A greenish - tan color.
- TANSY — Button - sized, gold colored, flat-top seed heads.
- STERCULA — Red - brown with golden seeds.
- MINIATURE WOODROSE CLUSTERS — Chocolate - brown color
- CRAB EYE CLUSTERS — Bright red and black seeds on open pods. (do not eat)
- ELEPHANT EARS — Dark chocolate — fine for wreaths or focus arrangements.
- EUCA POD SPRAYS — Yellow - tan color
- WATSONIA SPIKES — Rare, deluxe item — autumn brown color.
- POINCIANA PODS — Much variety of curve and curl (like any cute girl)
- OKRA STALKS — Try 3 stalks in a column.
- DESERT PETTICOAT — Pink—try it and you'll know what we mean.
- TULIP TREE PODS — Boat shaped — dark on the bottom — what fun.
- SUGAR PINE CONES — Seem to be over a foot long
- PEPPER GRASS — Dark seeds show yellow pantaloos-panticles
- GLOBE CRESS — Light straw color.
- DRIFTBARK BASE — Sanded to bring out texture and color.
- PALM HEARTS — (special) Ivory - chartreuse color.
- CYPRESS GRASS — Cream color
- SILVER TREE CONES — Exquisite, variable, almost shimmering

You really don't have to start with a shrunken head — unless it is the head of a gorgeous desert flower, a mountain growth of unusual type or form or even something out of the sea.

The collection (a few of which are mentioned here) are from Mel Capper, Palm Springs, California. They are picked at the right time, cured with experience and shipped with a prayer. They are received by us and offered to you with a prayer.

DRIED ARRANGEMENTS are most decorative at all times — with real flowers, with artificial flowers and fruits, or alone. The latter two are, of course, almost imperishable.

Bring your own container if you wish to and fill it as you wish at our PATIO SHOWROOM WORK TABLE. No one will look over your shoulder and sneer — they may offer to help or just sigh and say, "I wish I could do that."

"Mr. Mum" — of the strange world

## McCLELLAN-BALL CO.

YARD  
GARDEN

SUPPLIES

FARM  
KENNEL

BIRMINGHAM, MICHIGAN

Phone MI 4-4133

850 S. Woodward

## Have You Met ...

Mr. and Mrs. J. L. Waterbury of 791 N. Eton? They moved from Hillside, Ill., on Sept. 18.

Call your Society Editor if you have news of social interest.

Most bike riders in accidents with motor vehicles are violating traffic laws, a National Safety Council study revealed. Most bike accidents, the study showed, occur during April-September.



## washable cotton shell outer jackets 19.98

our warm cotton shell quilt lined winter jackets are machine-washable and fashion-tight favorite cold weather companions handsomely styled for comfort in action.

- natural color timbersheen cotton carcoat with giant inside zipper, tab button closure, zip-off hood.
- natural or antelope borgana colored surcoat with adjustable side tabs, 4-pocket front, smart yoke, back and front. each sizes 36-46.



Maple at Bates  
Birmingham



STORE HOURS  
Monday thru Saturday  
9:30 to 5:30 P.M.