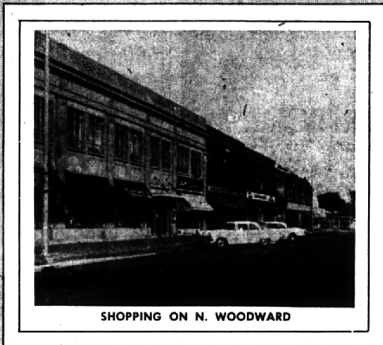


# BIRMINGHAM



SHOPPING ON N. WOODWARD

*The Town of Friendly Shops*

## The Complete Shopping Center

What constitutes a complete shopping center? To be truly complete, any shopping area must carry a wide range and variety of products in every price range. It must be well stocked with the latest styles and types of merchandise. Sizes and colors must be well represented. The shopping center must have good parking facilities, and be represented by shops of every kind.

What finer shopping center can you find than Birmingham? Virtually any retail product you can think of is available in our town, with a complete range of prices. In fact, Birmingham meets every criterion for the complete shopping center.

Why shop elsewhere? You'll find everything necessary to make your shopping pleasant, fast and economical in Birmingham — the Town of Friendly Shops.

### *Did You Know...*

Birmingham is a complete shopping area with such specialized shops as:

- A Pet Shop
- Antique Shops
- Interior Decoration Shops
- Office Supply Shops

## Look for it FIRST in Birmingham... Save Time and Shop Leisurely

- |   |  |  |   |
|---|--|--|---|
| <p><b>CARTIER'S PAINT AND WALLPAPER</b><br/>311 E. Maple</p> <p><b>JERRY MORSE</b><br/>Gentlemen's Attire</p> <p><b>QUARTON FOOD MARKET</b><br/>1744 W. Maple—The Complete Market</p> <p><b>HARRISON'S LUGGAGE &amp; LEATHER GOODS</b><br/>233 E. Maple</p> <p>herb ring—<b>DISTINCTIVE JEWELRY</b><br/>Suite 203, Leon Bldg., 286 E. Brown</p> <p><b>BOB FROST, INC.</b><br/>479 S. Woodward</p> <p><b>DIMAS FURS</b><br/>37 Years on Woodward Ave.</p> <p><b>Wabeek Pharmacy &amp; The Prescription Center</b><br/>286 W. Maple and 624 N. Woodward</p> <p><b>BIRMINGHAM ELECTRONICS</b><br/>141 East Maple</p> <p><b>THE INSPIRATION SHOP</b><br/>Gifts and Art Objects</p> <p><b>BODINE'S</b><br/>The Greeting Card Shop</p> <p><b>ACME QUALITY PAINT STORE</b><br/>Color &amp; Service is Our Business</p> <p><b>BIRMINGHAM FRUIT CO.</b><br/>124 N. Woodward</p> <p><b>THE F. J. MULHOLLAND CO.</b><br/>Birmingham's Oldest Department Store</p> <p><b>BIRMINGHAM HARDWARE</b><br/>152 N. Woodward</p> <p><b>HAWTHORNE ELECTRICAL COMPANY</b><br/>Birmingham's Oldest Electrical Store</p> <p><b>WILSON PONTIAC-CADILLAC, INC.</b><br/>1350 N. Woodward</p> | <p><b>KAY BAUM</b></p> <p><b>SHAIN'S REXALL DRUG STORE</b><br/>Community Service Since 1906</p> <p><b>BIRMINGHAM LUMBER &amp; SUPPLY</b><br/>1025 Haynes</p> <p><b>DICKINSON'S MEN'S WEAR</b><br/>Wabeek Building</p> <p><b>JOE STOLTZ</b><br/>Custom Tailoring</p> <p><b>HAR-TROM HI-WAY FURNITURE MART</b><br/>1532 S. Woodward (4 blks. N. of 14 Mile)</p> <p><b>MACHUS</b><br/>Restaurant &amp; Pastry Shop</p> <p><b>THE CHEER SHOP</b><br/>Your Child's Favorite Store</p> <p><b>BIRMINGHAM BIKE SHOP</b><br/>746 E. Maple</p> <p><b>UNUSUALS</b><br/>150 W. Maple</p> <p><b>MORTIMER'S</b><br/>Men's Style Center</p> <p><b>NORTH CHEVROLET COMPANY</b><br/>1000 S. Woodward</p> <p><b>ANDREW M. YEVICH</b><br/>Manufacturing Jeweler</p> <p><b>PRINCETON PREP SHOP</b><br/>237 Pierce</p> <p><b>ALICE'S WONDERLAND</b><br/>Children's Shop</p> <p><b>GWYNN'S</b><br/>Men's Wear</p> <p><b>HUSTON HARDWARE</b><br/>Birmingham's Oldest Hardware Store</p> | <p><b>McSWEENEY'S FINE FOOTWEAR</b><br/>Children's Fittings a Specialty</p> <p><b>McBRIDE HARDWARE CO.</b><br/>154 So. Woodward Ave.</p> <p><b>BIRMINGHAM CAMERA SHOP</b><br/>Everything Photographic</p> <p><b>WILSON DRUG CO.</b><br/>In The Very Heart of Birmingham</p> <p><b>THE VARSITY SHOP</b><br/>Birmingham's Most Complete Sports Store</p> <p><b>DAVIDSON'S</b><br/>Woodward Avenue</p> <p><b>SNYDER, KINNEY &amp; BENNETT, INC.</b><br/>Complete Real Estate Service</p> <p><b>KAY COOLEY</b><br/>Everything We Sell Must Travel Well</p> <p><b>HIGGINS &amp; FRANK</b><br/>of Birmingham</p> <p><b>BINGHAM &amp; BINGHAM</b><br/>Insurance</p> <p><b>LAKES'</b><br/>The Sterling Store of Birmingham</p> <p><b>PECK'S MEN'S WEAR</b><br/>108 S. Woodward, Cor. Maple</p> <p><b>S. S. KRESGE CO.</b><br/>West Maple at Henrietta</p> <p><b>BITTER'S BEVERAGES</b><br/>Beer &amp; Wine Delivered</p> <p><b>HERBERT BURR SHOES</b><br/>255 N. Woodward Ave.</p> <p><b>SHERMAN SHOES</b><br/>Featuring Florsheim Shoes</p> <p><b>B'HAM PAINT, GLASS &amp; WALLPAPER CO.</b><br/>335 E. Maple</p> | <p><b>JULIARD'S</b><br/>Ladies' Distinctive Footwear</p> <p><b>JACOBSON'S STORES, INC.</b></p> <p><b>BIRMINGHAM FEDERAL</b><br/>Savings &amp; Loan Association</p> <p><b>RUDIN'S FINE FOODS</b><br/>195 W. Maple</p> <p><b>MILKS' APPLIANCES</b><br/>1493 S. Woodward (4 blks. N. of 14 Mile)</p> <p><b>LA BELLE'S</b><br/>Gifts — Books — Stationery</p> <p><b>YOUNG'S OF BIRMINGHAM</b><br/>Featuring LeBow Clothes</p> <p><b>SFIRE'S QUALITY MARKET</b><br/>Awrey Bakery</p> <p><b>McCLELLAN-BALL CO.</b><br/>850 S. Woodward</p> <p><b>MILLS PHARMACY</b><br/>1740 W. Maple</p> <p><b>LEWIS FURNITURE</b><br/>235 Pierce</p> <p><b>ADAMS PHARMACY</b><br/>Woodward at 14 Mile</p> <p><b>LEW BETTERLY MUSIC CO.</b><br/>Across from Birmingham Theater</p> <p><b>SMITH'S MARKET</b><br/>Choice Meats</p> <p><b>MAX BROOCK, INC.</b><br/>Birmingham's Senior Realtors</p> <p><b>ELDON GENEROUS</b><br/>Distinctive Tailoring</p> <p><b>GRINNELL'S</b></p> |
|---|--|--|---|

*It's fun to shop in an atmosphere of neighborly friendliness!*