

## How Congress Creates Committees

Much is written about congressional committees, the power they wield, the power their chairmen wield, and whether the seniority tradition which governs position on committees is meritorious or not. The average reader may not have a clear idea of these committees, their functions, and rules governing their membership.

To begin with, in the re-organization of Congress, more than ten years ago, the number of committees was reduced to fifteen regular standing committees in the Senate and nineteen in the House. (A few committees have been organized since then.)

Membership is based on the composition of the two Houses, as among the two major parties. For example, if the Democrats hold three-fourths of the seats in the Senate, every Senate committee will consist of approximately three-fourths Democrats and one-fourth Republicans.

BECAUSE THE Democrats gained forty-seven seats in the House and thirteen in the Senate in the 1958 congressional elections, their margins on all congressional committees increased appreciably last January. And, if a committee is composed largely of leftwing Democrats, as an example, it will report out legislation reflecting these views.

It is true that committee chairmen have considerable restraining power, and because they reach their chairmanships on the basis of seniority, objections are often

voiced. However, the chairman cannot report legislation out of his committee which is not favored by the majority, and if the committee is determined to report out legislation the chairman can rarely block the will of the majority.

WHAT WILL HURT? Republicans most in the new Congress is a combination of weaker committee membership and weaker House representation. In other words, whereas the Republican party could usually, in the past Congress, count on the support of several conservatives from the South on most committees, perhaps to block objectionable or unconstitutional legislation, they, and whatever allies they might pick up in the South, may now be out-voted or overwhelmed in committees.

In addition, after legislation which conservatives oppose reaches the floor of either House the larger and more liberal (or leftwing) majorities in both Houses will not be as easily countered by the conservatives. Therefore, it will be easier for the leftwingers, or liberals, to get legislation out of committee, and easier for them to pass it once it is out of committee.

The most confused interpretation of committees is the impression among some that, because the chairmen remain in office because of seniority from year to year, the "mood" of the committee does not change. It changes as a result of committee composition, and all committees will change considerably in January.

## From The Eccentric's Point of View...

Speaking of today's labor leaders who respect not only little fear but also little respect for the government of the United States . . . how about Harry Bridges, powerful head of the Pacific coast's longshoremen? We learn that he has told the U.S. Congress that he willingly would use his personal power and his strategic union's manpower to block American shipping at the request of his pals in Communist unions anywhere in the world. (This is YOUR government that Bridges scorns . . . YOUR Congress that he shows no respect for. By the way, who placed these men and women in Congress, anyway?)

President Eisenhower's recent critical blast against the Democrats in Congress, accusing them of extravagance, hardly seems to fit the facts . . . if it is true that every one of his annual budgets exceeded what he got from the Democratic-dominated Congress. Like no doubt was justified in some of his criticism, but certainly the White House budgetary increases offer no proof that he was too frugally minded himself.

Former President Truman says he thinks the Ike administration is "hounding" him and some of his former appointees. Two of them were convicted in 1956 of conspiracy to defraud the federal government. Harry's feelings were revealed at a recent \$100-a-plate dinner to

raise dough to defend an appeal for the convicted twin. Harry certainly is loyal to his friends—inside or outside a courtroom trial.

It has been announced from Moscow that office and factory workers in that country are to go on a seven-hour work day, 40 hours per week. That's cutting down on certain phases of the Soviet's slave labor methods . . . but it is far from U.S. standards, since our workers earn vastly more per day than Russians.

Khrushchev was sadly disappointed because Los Angeles police wouldn't let him visit Disneyland. Does this mean that, after all, K is but a child at heart . . . even though his record in the field of human slaughter and slavery makes him a veritable adult demon?

If you don't believe that antiques really are worth more than current models and patterns of things, just remember that a 1931 penny is worth \$20, and a 1927 nickel is valued today at \$115. Moral: if you want your money to be worth something, just hang on to it long enough.

To our great amazement we have just learned that 100 years ago Niagara Falls ceased flowing and spectators walked over the river bed. Must have been a mighty Big Hand on the faucet.

### The Birmingham Eccentric

Published every Thursday at Birmingham, Mich., in the Eccentric Building, 220-234 North Woodward Avenue Telephone Midwest 4-1100

GEORGE R. AVERILL  
Editor and Publisher

PAUL NEAL AVERILL  
Business Manager

GEORGE WM. AVERILL  
Managing Editor

DAVID F. GIBB  
Advertising Manager

## ONE THING OR ANOTHER By George Wm. Averill

Birmingham city commissioners recently were discussing the information which would appear on the winter tax statements which the city must print, send out and collect for the school district and county government.

Remarked Mayor Harry M. Denyes, "It doesn't make too much difference to me how we print them. After all, most people never see their tax bills. Only their mortgage companies do."

"That brought snickers from several other commissioners. "Don't laugh!" exclaimed City Manager L. R. Gare. "That's no joke! Ninety per cent of our tax bills go to banks and mortgage companies!"

"There's one fellow I know whose wheels in his head are going around constantly. But there's no sound—

he's got a permanently sealed motor.

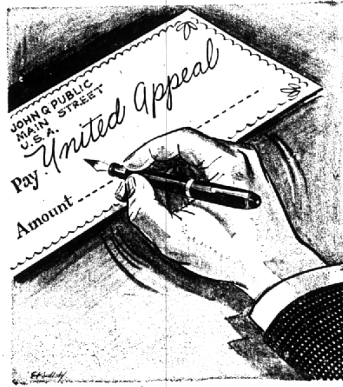
One of the most expensive things a householder can do is fail to get several estimates on home repairs.

Taking the first name out of the phone book and accepting that firm or individual's price can cost many dollars. From three to four times or even greater can be the cost range for the same job at practically the same quality . . . and by reputable contractors all.

If you don't think so, just check the range of bids on most public construction jobs.

The firm's estimator will be using a sharp or a dull pencil when figuring the job. You, of course, are interested in locating the fellow who's using the sharpest pencil.

## Investment in Humanity



NATURE NOW by Lydia King Frehse  
Special Writer for The Birmingham Eccentric

## Grasshoppers Ward Inevitable Frosts

Mid-October with its impending frosts spells death for most of our insect hoards. However, a walk through the tall weeds and grasses of any sunny meadow will yet arouse a bevy of grasshoppers, one of the most persistent groups of their kind.

World-wide in their distribution they lead the list of insect-destructive to crops. From ancient to modern times the voracious appetite of the grasshopper has caused famines which have taken the lives of millions of human beings. For this insect is the so-called "locust" of the plague recorded in the bible. His sudden and spectacular gastronomic forays have long brought waves of destruction to man's crops, especially in our mid-western prairies.



Mrs. Frehse

CATCH A grasshopper and hold him in your hand. As a child we accused him of chewing tobacco, due to his protective practice of discharging a brownish spittle. His relatives in the large order Orthoptera or straight-winged insects include such primitive members as the roaches, as well as the katydids, crickets and the curious walking sticks.

The destructive ability of the grasshopper resides in his strong grinding jaws. Not content with the large compound eyes typical of insects, he has endowed himself with three extra single eyes, one in the middle of the forehead and one on each side just back of the feelers. A little investigation of the meadow grasshopper will show openings on his front legs just below the knees which serve as hearing organs.

THE THIRD PAIR of legs is specialized for jumping, a skill so advantageous to a ground feeder. The first pair of wings is hardened and does not function in flying. The second pair of wings, which are folded like a fan when not in use. Characteristic of insects is the highly developed system of air tubes which carry oxygen to all parts

of the body. Air sacs which act as rudimentary lungs, a tubular heart and segmented ganglia along a central nerve cord are primitive developments which point toward the more complex systems present in red-blooded animals.

THE LIFE cycle of a grasshopper can be traced from late September when the female selects a spot of uncultivated ground where she punctures the soil with her ovipositor to lay 8-25 egg masses each containing from 20-120 elongated eggs. In springtime these hatch into nymphs which resemble the adult except for the relatively large head and the lack of wings and genitalia. Five or six molts covering a period of 40-60 days are required to produce the adult grasshopper.

BY THIS TIME crops have arrived at summer's peak, a tempting prospect for this insect which feeds most voraciously at a 65-90 degree temperature. In a few hours a field of its kind can wipe out a prosperous field of corn, wheat or alfalfa.

FIGURES SHOW that during 1925-1934 grasshoppers destroyed crops valued at some 230 million dollars. During the same period more than four and a half million dollars were invested in control measures which dollar of which brought a \$50 reward in crop savings. Most effective control measures include ground and air poison sprays and mechanical pickers which reap as high as four to eight bushels of insects per acre.

IN THE United States there are some 100 species of grasshoppers whose destructive ways are most felt in those areas where late rainfall is 25 inches or less. The damage created is not balanced by their use as food for our larger birds or small animals. Grasshoppers are also eaten by primitive tribes in the tropics and have come to be considered as gourmet fare by certain of our fellow citizens.

## Happenings of Long Ago

Bits of News Gleaned From Old Files Of The Eccentric

50 YEARS AGO  
Oct. 15, 1909

"The interurban cars of the D. U. R. have each been supplied with a neat case of surgical instruments. The saw and ax are supposed to be useful in a mix-up."

30 YEARS AGO  
Oct. 17, 1929

"Whether Birmingham will have a visiting nurse to make calls on persons who cannot afford to pay for service will be announced next Monday night by the village commission."

"The well-dressed woman simply must have one or two of those "little frocks" in her wardrobe this winter."

"A survey of the condition of pollution along the River Rouge is recommended to the Oakland County Drain Commission."

15 YEARS AGO  
Oct. 19, 1944

"The total school budget for the school year 1944-45 for the Birmingham school district was set at \$481,500.12 at the annual public hearing session of the board on Tuesday evening."

"The Birmingham City Commission at its meeting Monday took action looking toward the immediate filing of the city's formal

test against the proposed bus rates on the Detroit-North Woodward lines of the Greyhound bus lines."

### STRICTLY FRESH

Trouble with most low-overhead stores is that you keep hitting your head on the rafters.

Has anyone ever patented a muzzler for a backbiting woman?

Housewife's utopia: where the kids go to school 12 months a year.



Difference between a wit and a joker is wit is what the joker thinks he is.

The only thing that can match the high rent on some apartments is the stairway leading to them.

## The Light Touch by Jeanne Westerdale

INDECISION  
Cat in the doorway, it's getting colder—  
I hold the door open, you're growing older;  
Mice on the outside you surely could find,  
Or hamburger within . . . won't you make up your mind?

in home after home after home...



there's always plenty of hot water



the new electric water heater way

In home after home there's a new electric water heater. And the families in these homes enjoy all the hot water they want.

You can be confident that an electric water heater, plus Edison's new Super Supply Plan, will provide round-the-clock hot water for all your family's needs, too. Then you can plan your day more efficiently—do the laundry, wash dishes, schedule showers when you want to.

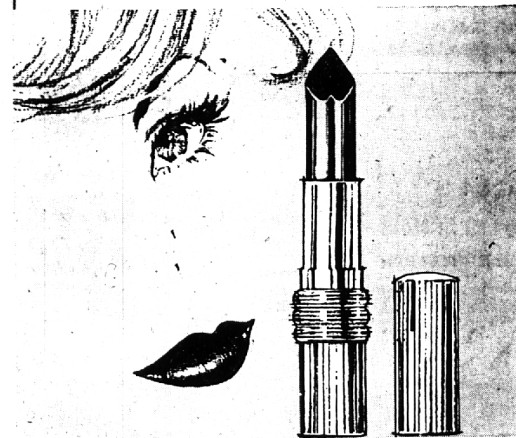
Here's the convenient, modern way to GET IT HOT . . . GET A LOT for an operating cost as low as \$3.88 per month.

Only electric water heaters give you all these important advantages!

- |   |  |
|---|--|
| <input checked="" type="checkbox"/> Efficient—the heat goes into the water      | <input checked="" type="checkbox"/> Fast—new, more efficient heating units           |
| <input checked="" type="checkbox"/> Install anywhere—need not be near a chimney | <input checked="" type="checkbox"/> Outer shell—cool to the touch all over           |
| <input checked="" type="checkbox"/> Long life—meet Edison's rigid standards     | <input checked="" type="checkbox"/> Edison maintains electrical parts without charge |
| <input checked="" type="checkbox"/> Automatic—all the time                      | <input checked="" type="checkbox"/> Safe—clean—quiet—modern                          |

See your plumber or appliance dealer **DETROIT EDISON**  
SERVES SOUTHEASTERN MICHIGAN

Now... shape your lips as you color!

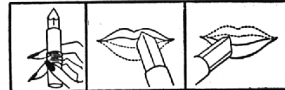


## Helena Rubinstein's new HEART ♥ SHAPE LIPSTICK

A perfect outline everytime! Toss out your lipstick brush. Wave goodbye to your lip liner. Helena Rubinstein revolutionizes lipstick design with the Heart-Shape Lipstick! Pointed and curved like a heart, it shapes your lips to perfection as it colors. Takes just a few strokes, even without a mirror. No blurs. No "feathery" edges. It's so skillfully designed, the point lasts as long as the lipstick.

Five new luscious shades that go straight to the heart of color: Heart of Pink. Heart of Red. Heart of Coral. Heart of Cherry. Heart of Peach. Get them all, match your every dress or mood this fall.

Each in the famous Dew-Kissed texture that smooths your lips to vibrant new beauty. Heart-Shape Lipstick in jeweler's design metal cases 1.50 to 6.00. In pretty pastel pink case 1.00. Prices plus tax.



FREE with your purchase! Ask for Helena Rubinstein's new booklet: "How to Shape A Beautiful Mouth!"

"Always A Place To Park"



**MILLS PHARMACY**  
1740 W. Maple at Chesterfield MI 4-5060