



**Opens New Carpet Store**

M. J. Martin displays the latest in carpeting at his new store, 2685 S. Woodward, Bloomfield Hills. Martin has had long experience in the carpeting field and offers everything in the line of fine rugs. He also plans to carry some tile in the near future.

**Maron Elected Head of Council**

Formation of a stainless steel plumbing fixture council of the Plumbing Fixture Manufacturers Association was officially announced by the council's newly-elected chairman, Ernest H. G. Maron, 2400 Turner, West Bloomfield, sales manager of the Lyoncraft division of Lyon, Inc., following an organization meeting held in Chicago. The move culminates a series of discussions among stainless steel plumbing fixture manufacturers. According to Maron, "There has been for some time a real need for an industry organization to represent more than 9 million members with \$12½ billion life insurance in force. We plan to develop programs for the mutual benefit of stainless steel plumbing fixture producers."

**Name Ransford President Of N.F. Congress**

R. George Ransford, 1711 Cedar Hill, Bloomfield township, president and general counsel of the Gleensers Life Insurance Society was elected president of the National Fraternal Congress at the closing session of its 73rd annual meeting here today. The NFC is composed of 101 fraternal life insurance societies representing more than 9 million members with \$12½ billion life insurance in force. A NATIVE of Caro, Mich., Ransford has been a resident of

**BUSINESS BRIEFS**

**Name Heller Comptroller At P.E. Plant**

WARREN, OHIO—The appointment of William G. Heller, 3160 Broadway, Birmingham, as divisional comptroller of Packard Electric division, General Motors corporation, was announced today by Packard Electric general manager, C. C. Rigby. Heller, whose appointment is effective Oct. 1, will succeed P. L. Griffiths who will retire Dec. 31 under provisions of the General Motors retirement program after over 32 years of service. Until his retirement he will be on special assignment, reporting to the general manager. HELLER, NOW general divisional comptroller of GMC Truck and Coach division at Pontiac, will join Packard Electric after 21 years of service. In 1938 he was employed by Inland manufacturing division as an accounting clerk and after a series of promotions was named factory accountant in 1956. Later that year he transferred to GMC Truck and Coach division as general supervisor—most face this area for 31 years, and has been associated with the Gleensers for 25 years. He has served as the fraternal Society's president and general counsel for the past 13 years. He received his LL.D degree from the Detroit College of Law in 1937, after completing pre-law schooling at the University of Michigan.

**Burroughs Names Holmes New Controller**

John H. Holmes, with Burroughs a corporation's accounting staff since 1951, has been appointed controller of the Military Electronic Computer division at 14300 Tremain Avenue. Holmes replaces C. J. McClain, who transferred to the staff of the corporate controller, said E. W. Schenck, general manager of the computer division. A Philadelphia native, Holmes holds BS and MA degrees in accounting from the University of Pennsylvania and Temple University, respectively. Married, he resides with his family at 1053 Mohegan, Birmingham.

**The Business Institute**

of PONTIAC  
**Evening School Division**

Announcing a new class in  
**MACHINE SHORTHAND**

October 5, six-thirty p.m.

Machine shorthand (Stenograph and Stenotype) is the "standard" in court and conference reporting. Unexcelled for all office dictation requiring high speed and accuracy.

7 W. Lawrence

Federal 2-3551



... MEANS EVERY BANKING AND TRUST SERVICE FOR BUSINESS ... FOR INDIVIDUALS!

Here's a timely service for homeowners  
**FHA HOME IMPROVEMENT LOANS.**

Manufacturers National Bank provides home owners with FHA Home Improvement funds quickly, easily, at convenient terms for a wide variety of purposes. You can borrow as much as \$3500 and have as long as 5 years to pay. See your dealer or contractor or the MNB Office near you.

**MANUFACTURERS NATIONAL BANK**

Maple Road W. near Telegraph, Bloomfield  
Woodward N. at Wellerly, Pleasant Ridge  
Ten Mile Road W. near Telegraph, Southfield



THERE'S NOTHING LIKE A NEW CAR... MAKE YOURS A ROCKET ENGINE OLDS!

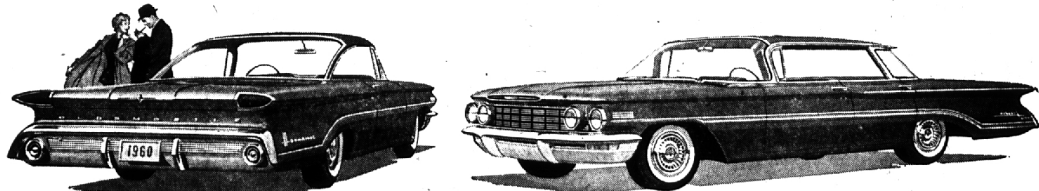
**SUPER 88 HOLIDAY SPORTSEDAN**—Super action... super satisfaction! Every value-packed Super 88 model is powered with the PREMIUM ROCKET Engine that delivers maximum performance from premium fuels. There's abundant reserve power for passing throughout the entire driving range.

YOUR LOCAL AUTHORIZED  
**OLDSMOBILE**  
QUALITY DEALER

*invited you to see the Most Satisfying cars you've ever known!*

The 1960 Oldsmobiles are here—as new as new can be! Every beautiful line and every outstanding new feature is included to bring you the finest the medium price class has to offer! Oldsmobile's new and radiant styling is designed to satisfy your sense of good taste. New Quadri-Balanced Ride with Vibra-Tuned Body Mountings is certain to be the most comfortable and satisfying

ride you've ever tried. It brings new smoothness, new stability, new safety and new silence! There's a new balance of power—with two Rocket Engines! Three established series to choose from! Seventeen new models... including two new 3-seat Fiestas! Come in and see the *Mighty Satisfying* 1960 Oldsmobiles... quality built, quality sold and quality serviced for your lasting satisfaction!



**1960 OLDSMOBILE DYNAMIC 88 HOLIDAY SCENECOUPÉ**—You get more miles per dollar! Every dollar-saving Dynamic 88 has an standard equipped the new REGULAR ROCKET Engine—'for Rocket' 'Go' on lower-cost, regular gas—saves you about a dollar bill on every fill!

**1960 OLDSMOBILE NINETY-EIGHT HOLIDAY SPORTSEDAN**—Luxuriously appointed... elegantly styled in the new Ninety Eight Oldsmobile, you will find supreme satisfaction in every respect—power, prestige, pleasure. New Custom-Lounge Interiors—magnificent PREMIUM ROCKET performance!

**OLDSMOBILE FOR 1960**

SUBURBAN MOTORS CO., INC., 565 S. WOODWARD AVE.

—SEE THE DENNIS O'KEEFE SHOW • EVERY WEEK ON CBS-TV... HEAR LOWELL THOMAS AND THE NEWS • MONDAY THRU FRIDAY ON CBS RADIO—



Mrs. Pearl Newbauer Mrs. Dora Leabo Mrs. Ruth Estes



The Henry family of Traverse City

*"There are times when it is almost impossible to express one's appreciation..."*

This is the beginning of a letter to us from Mr. and Mrs. Donald Henry of Traverse City.

Around 9 p.m. one night last November, the Henry baby, Bucky, suddenly became unconscious. Bucky already had a temperature and now his breathing had nearly stopped.

Desperate, Mr. Henry rushed for the phone, explained the critical emergency to Operator Pearl Newbauer.

Mrs. Newbauer called in Senior Operator Dora Leabo and Operator Ruth Estes. While one called the ambulance, another called the fire department and the third made sure that a doctor would be ready at the hospital.

Bucky was rushed to the hospital in minutes and his life saved.

THE HENRY LETTER CLOSED WITH THESE WORDS:

"It is tremendously gratifying how efficient and dependable the telephone company is in time of need. Please extend to those on duty that night our indebtedness."

MICHIGAN BELL TELEPHONE COMPANY