

Start New 19-Office Building for Harlan

Construction started on a new deluxe office building in the Civic Center complex of Birmingham recently. The 19-suite Harlan Building, designed to meet the needs of the ritzy, one block south of Maple, growing business and professional district, is being erected on Mare block from Birmingham's City Street, between Bates and Hen-Hea, and close to municipal parking lots, the city's exclusive shops, and restaurants.

IT WILL also have exclusive parking in the rear for most of its tenants.

The two-story building is a radical departure from its conventional prototype. The basic idea, said Louis G. Redstone, the architect, is to provide the executive and their employees with cheerful and colorful surroundings.

To achieve this the architect designed the individual offices around a large skylighted court on each floor or plaza. The building will be entirely air-conditioned.

THE END WALLS of the snacious corridors will have ceramic and mosaic murals on both floors, with free standing sculptures located in the courts and flanked with landscape arrangements.

The Harlan Building is scheduled for occupancy on or about Jan. 1, 1960. C. Allen Harlan and Mr. and Mrs. Ernest A. Baumgart are the owners. Chisnu Construction Co. are general contractors.

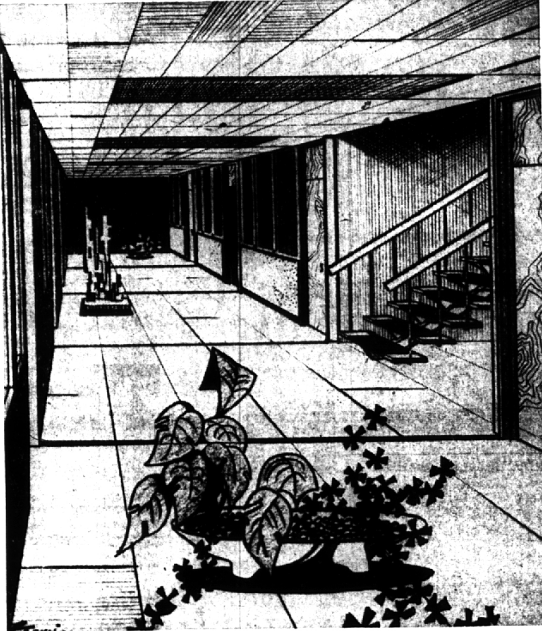
Honor Party At Luncheon

John M. Dunson, director of sales for Wolverine Tote Division, Calumet & Hecla, Inc. and president of the Detroit Sales Executive club will outline "Marketing's Place in Management" at a luncheon meeting of the Industrial Marketers of Detroit Wednesday noon, December 2, 1959 at the Veterans Memorial Building.

In addition to Dunson's marketing talk, IMD will honor H. A. (H) Hart, 1206 Birmingham, Birmingham, chairman of the board of the Association of Industrial Advertisers and a past president of the local chapter.

Also in attendance will be the board of directors of AIA representing chapters from all over the U. S. and Canada meeting for the first time in Detroit under the leadership of Hart.

From out-fourth to one-third of the nation—40 to 50 million Americans are believed to be infected with the germ that causes tuberculosis.



This is the lower plaza of the new 19-office Birmingham. The two-story structure will face Harlan building now under construction have the offices around a large skylighted court on each floor or plaza.

BUSINESS BRIEFS

State Licensed
24 Hour Nursing Service

Member of
Michigan Association of
Approved Nursing Homes

Tower Park Nursing Home

1607 So. Lafayette • Lincoln 7-0430 • Royal Oak, Mich.

AMBULATORY	★	Excellent Food	★	DIABETIC
CANCER	★	Special Care	★	STROKE
CARDIAC	★	Physician on	★	LEVIN-TURE
POST OPERATIVE	★	24 Hour Call	★	MEDICAL GASES

X-Ray and Laboratory Facilities Available

MINIATURE

New! BARBECUE

Only **2.95**

Plus Tax

- 8" Diameter
- 10" Height
- Portable
- Adjustable Grille

Perfect for charcoal broiling small steaks, hamburgers, hot dogs, marshmallows, etc. Miniature size makes the barbecue ideal for indoor use. Comes boxed suitable for gift giving and mailing.

PHONE AND MAIL ORDERS ACCEPTED

Smith - Matthews Foundry
DISTRIBUTORS

6640 Charlevoix Phone WA 2-7155

WETMORE'S—A General Tire Dealer

"AT THE PLACE WITH THE CAR ON THE ROOF"
HAVE JUST INSTALLED THE NEWEST UP-TO-DATE
EQUIPMENT TO DO

MICHIGAN'S FIRST 100 MILE PER HOUR

RETREAD

Developed in California by the Super Mold Corp.

A good original equipment tire—properly retreaded
—is better than a new low price tire and it costs
less money.

WETMORE'S SAFETY SERVICE

23459 WOODWARD, at 9 1/2-Mile Road FERNDALE
LI 1-8200 LI 1-3414

THANKS FOR EVERYTHING

For your grand interest in our shop.
For prompt payment of your account—if so.
For the suggestions of new products, display ideas, delivery improvements & price cuts.
For your participation in our promotional events.
For your forbearance when we made errors such as the wrong kind of salt or the groove in the lawn when we missed that narrow driveway.
For the happy thought that these people will let us know that they have not been charged for:—

1. A water RECIRCULATING PUMP & several feet of PLASTIC TUBING.
2. A pressure tank FLAME THROWER picked up by his employee at Turf & Horticultural Supplies.
3. Anyone else who charged something but didn't get a bill for same.

The LECTURE and DEMONSTRATION by Mrs. Frank Webb on November 21st was a great success. THE NEXT LECTURES will cover CHRISTMAS DECORATIONS and will be held on:—
Saturday December 5th
Saturday, December 12th
From:— 10:00 to 11:00
12:00 to 1:00
2:00 to 3:00

Bring your questions and receptive minds and HEAR, SEE and LEARN.

NAME WHITING General Manager

Macaulay Whiting, son of Mr. service departments for the Mid- and Mrs. Henry Whiting, 715 Lake land division since 1956, and as Park, Birmingham, has been ap- such has been responsible for en- point of general manager of Dow's engineering and construction, main- tenance and plant services, utili- ties, purchasing, standards, traf- fic, today by Dr. Leland I. Duan, presi- dent of the Dow Chemical com- pany, purchasing, standards, traf- fic, and miscellaneous services. He is Whiting has been manager of 34.

ENLIGHTENED PERSONAL SERVICE COSTS NO MORE

Doubts, misgivings and fears often attend thoughts of funeral homes, arrangements or funeral directors. This is indeed unfortunate, because today's funeral director and his establishment are modern, dignified and reliable. And he is sincerely interested in helping you understand the business aspects of the funeral at a time not burdened by personal loss.

"What services should I expect from the funeral director?" Or any other questions you may wish to ask.

For private consultations, call Liberty 9-0500, or stop in for a visit. Qualified funeral directors will personally conduct you on a guided tour without obligation of course.

Wm. VASU Funeral Home
4375 North Woodward,
between 13 & 14 Mile Roads

THE SCIENTIST:—

- Soil Moisture Gauge—Tells when and how much to water—THE GARDEN, OF COURSE.
- Rain Gauge—Accurate measurement of how much of it fell where your gauge is.

THE FLOWER ARRANGER:—

- Artificial flowers from a real competitor—ITALY. Containers from clay pots to pewter—washed copper bowls—FROM KY. TO INDIA.
- Ivy rings

THE NATURALIST:—

- Books (How to do it—right)
- Nature Field Glasses (Good at the beach also)
- Bird Identification Book (Peterson's)
- Bird Feeders & Special Foods

THE YOUNGSTER:—

- Gypsy Fire Colors
- Mobiles (Fish, flesh, fowl & science)

THE GARDENER:—

- Pruning Equipment
- Books (Roses, planning, encyclopedia, etc.)
- Gloves

THE DECORATOR:—

- Mexican Tin Fires (Gorgeous colors)
- Della Robia Wreaths
- Wall Brackets

EVERYBODY:—

- Baskets
- Exquisite candles & tapers (non-drippers)
- Xmas Welcome Door Mats (Fibre)
- Wrought Iron Tio Patio Tables
- Danish Glass Markers
- Patio Brooms
- Log Carriers and Holders
- Xmas Chime Lights

—COFFEE, COOKIES, APPLES on December Saturdays. LECTURES and DEMONSTRATIONS on CHRISTMAS DECORATIONS on December 5th & 12th.

ONE SAD NOTE is that our store will be closed on SATURDAY, DECEMBER 26th.

Thanks Again

McCLELLAN-BALL CO.

YARD SUPPLIES KENNEL FARM
BIRMINGHAM, MICHIGAN
Phone MI 4-4133 850 S. Woodward

GIFTS GOOD TO GIVE! GREAT TO GET!

PAJAMAS

Stripes, Patterns, Solids

\$5 to \$13.95

ROBES

Handsome lounging robe. Washable, lightweight flannel.

\$19.95

RED VESTS

Also British Tattensal and Foulard Wool Challis

\$11.95

Lo Cut

CARDIGAN SWEATERS

\$13.95

Dickinson's

WABEEK BUILDING — BIRMINGHAM
SAGINAW AT LAWRENCE — PONTIAC

HURRY! to NORTH CHEVROLET

FOR TOP PRIORITY ON A NEW '60 CHEVY

WE'RE WRITING TOP PRIORITY DEALS!

★ ★ ★ ★ ★

You can become one of the lucky people to get quickest delivery when they start rolling again

If you want to be one of the very first to take delivery on a new Chevy, once they start rolling again, we suggest that you come in and see us just as soon as possible.

Right now, we are writing TOP PRIORITY deals which assure our customers top priority deliveries. Your name goes down in our books, and automatically you are assured of fastest possible delivery on your new Chevy!

And, to make it worth your while to come in and sign promptly, we offer you a valuable bonus FREE! Your new Chevy will be delivered to you COMPLETELY WINTERIZED!

SPECIAL BONUS!
TRANSISTORIZED MANUAL TUNING RADIO
with every Chevrolet ordered from Nov. 25th to Dec. 30th.

OAKLAND COUNTY'S ONLY CHEVROLET DEALER WITH NITE SERVICE FOR YOUR CONVENIENCE

NORTH CHEVROLET

1000 S. WOODWARD, BIRMINGHAM MI 4-2735