



MI 6-2035
9 A.M. - 6 P.M.

ON ALL MAKES

- TELEVISION
- RADIO
- "Guaranteed Work"
- AUTO RADIOS
- RECORD PLAYERS

WE
USE
RCA
TUBES



Birmingham Television Co.

1842 S. Woodward, 1 blk. N. of 14 Mile Road, Birmingham
OPEN EVERY EVENING TILL 8 P.M.



Tackle
YOUR SAVINGS PROBLEMS

SAVE BY THE 10th!

THE GAME OF SAVINGS can be hard fought if you let expenses get the best of you. The easiest way to win is to save by the 10th of every month! When you save by the tenth you score two ways... first, you earn a full month's return, and second, you establish a regular savings pattern.

Make it a point for your side to save by the tenth of this month and every month. Open your account today!



CURRENT RATE 4% ON SAVINGS

CAPITOL SAVINGS & LOAN ASSOCIATION

Assets Over Fifty Million Dollars
27215 Southfield Rd. at 11 Mile Rd.
Downtown Office, Washington Boulevard Building
WO 2-1078

KE 7-6125

EL 6-7770

DOWN TO EARTH

Gardeners Get Hints for Winter

By ALICE WESSELS BURLINGAME
Special Writer for The Birmingham Eccentric

A visit to Ted Johnson's greenhouse on Drake road always is a good way to begin the winter season when we need advice on using plant material to enhance the architectural lines of our homes these days which bring the outside effect inside.

A cross-examination of this plant specialist brought out some of these house plant pointers which you will want to heed. Boston ferns do not want too dark a location. You will like the dense fluffy variety. Ferns are in style, you know. There is a tree fern which develops from a stump for any design or size need it has a lush fern growth at the top. It is perfect for ranch house decor. This fern will take more shade than the smaller specimens.

The Crassula or jade plant will grow into a stunning variegated tree. It wishes a maximum amount of light and for best results should be fed every month and not allowed to grow too dry. Rubber plants are also back in style and now you can secure a specimen with interesting leaves. They also demand good light and when you water them they should be placed in a container of water and thoroughly soaked. Home growers fail with a rubber plant when they grow them too dry.

IF YOU grow your large leaf philodendrons in too dark an area in your room you will not have the large leaves you admire, especially with a cut leaf philodendron. Your leaves will become smaller and smaller when they don't have enough light and lack fertilizer. Another plant for a contemporary decor is the Hawaiian Ti plant or corn plant. It comes to us from Puerto Rico and must not be kept too dry.

SOME PEOPLE have gardenia plant aspirations. They demand a room which is warm but heavy with moisture so the buds will not drop.

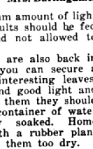
YOU WOULD enjoy securing some unroasted coffee beans and planting them in a four to a six-inch pot. Taking about six weeks to germinate, best results will be achieved if you plant them in sphagnum moss. As this moss does not possess food it will be necessary to water the plant each week with a weak solution of diluted fertilizer. You will be growing the hydroponic way.

THIS IS THE time of year to court the birds. One of the best

feeders you can make are feeding sticks—tree branches about two and a half inches in diameter and 18 inches long. About ten holes are made in the stick one inch across and three-quarters of an inch deep. A screw eye is inserted in the top for easy hanging. Fill the holes with suet and a portion of the holes with peanut butter and dry cornmeal. The last item is added to prevent the birds from choking on the peanut butter. Recall what peanut butter can do to the roof of your mouth? Just suppose you were a bird.

If cats are on the loose in your neighborhood you will want to make aluminum cat guards con-

Mrs. Burlingame



POTTER Moving & Storage Co.



no. 1 specialist in storage!



POTTER Moving and Storage Co.
2253 COLE
MI 4-4612
1118 N. S. Highway • El. 118
Mobile • El. 118 • Tampa • El. 118

structed from circular cones hung with the open end downward. Birds get thirsty, too, and you will find that a metal tray inside a box which is heated with a 15-watt bulb will keep water from freezing.

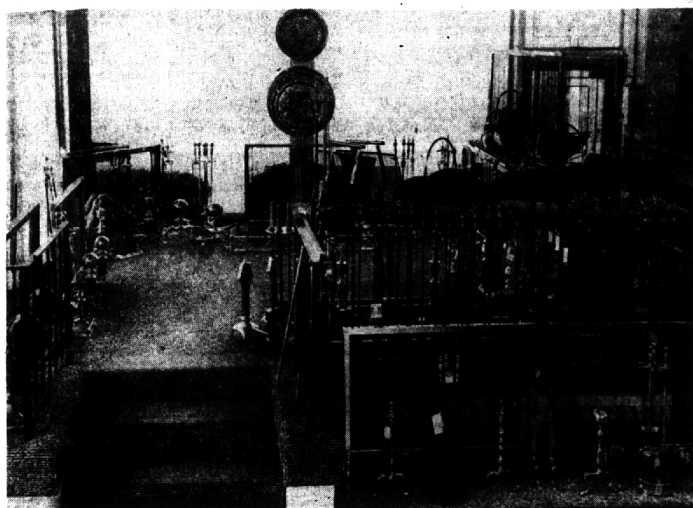
Be Wise—Use Classifieds!

From Cool Michigan To German Hot Spot For the Swoppes

BERLIN, Germany—First Lieutenant Edwin G. Schwoppe, Jr., 25, son of Mr. and Mrs. Edwin G. Schwoppe of 38546 Riverside drive, Mount Clemens, recently arrived in the U.S. Army's Berlin Command.

The Detroit native graduated from Admiral Farragut Academy, St. Petersburg, Fla. in 1952 and received his degree in 1956 from Michigan State University where he was commissioned through the ROTC program.

Accompanying Lieutenant Schwoppe is his wife, Mary, daughter of Mrs. George W. Mullin, of Buckingham drive, Birmingham, and their daughter, Gretchen 4 months.



HERE IS FIREPLACE FIXTURAMA

See all that's new and exciting at Federal Hardware and Supply's complete department devoted exclusively to custom built fireplace screens and equipment. All the newest styling... all shapes... all sizes... all designs... your screen is built to exact measurement for perfect fit... the fabrication is done in our own shop. Due to a large production schedule we are able to give fast service... Hundreds of satisfied customers attest to our immaculate workmanship and personal attention and service. A visit to our store and this department will pay you in many ways as you will be amazed to see such high quality at truly low budget prices. Fireplace equipment makes ideal Christmas gifts. We will modernize your old screen or give Trade-in allowance on a new one.

RECESSED HOODED DECORATOR



This beauty will adapt itself in styling to most any period or design of fireplace... The hood is a long established decorative feature of fireplaces adding grace and soft dignity to your fireplace. Various finish combinations are available... custom built in our own shop from \$29.95 only

BEAUTIFUL ACCESSORIES • Planters • Scones • Candle Sticks ANDIRONS, FIREPLACE TOOLS ETC.

Beautiful LOG BASKETS

20" LOG GRATE

Black and Brass with shiny brass handle... no fireplace is complete unless you have this ornamental and useful accessory... the price is far below what you would expect to pay for such a large quality well made basket. Reg. \$5.95



How can you have a fireplace without logs and here's a real big value in a log grate... it's strong... it will last a lifetime—look only \$2.99



COAL or WOOD GRATES

HEAVY CAST IRON WOOD GRATES

24" Reg. \$10.95	8.95
27" Reg. \$11.95	9.95
30" Reg. \$12.95	10.95
36" Reg. \$14.95	12.95

20" \$9.95	
24" \$10.95	
28" \$11.95	
32" \$12.95	

These prices are far less than you would pay for equal quality.

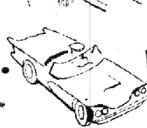
LIVE...



Work...



PASS...



near here..?

If So...

You will find the new (and already enlarged) North Woodward Office of Manufacturers National Bank a convenient place to do your banking.

Although this is a temporary location — you will find ample Off-Street Parking, Safe Deposit Boxes and Night Depository facilities for your convenience TODAY.

There is the added advantage that at this office you get "full-line" banking and trust services which at Manufacturers we call "One Stop Banking". Here at 1012 N. HUNTER BLVD. you can count on Frank M. Fisher, Assistant Cashier, Dick Craig, Assistant Manager, and their staff to serve all your personal, family or business banking and trust needs. Why not stop in and see for yourself? They would like to meet you.

BANKING HOURS • Mon. through Thurs.—9:30 A.M.-4:00 P.M. • Friday—9:30 A.M.-7:30 P.M.

MANUFACTURERS NATIONAL BANK

1012 N. HUNTER

Near the North Intersection of Woodward and Hunter Blvd., Bloomfield Twp.

Manufacturers also has an office on Maple Road just east of Telegraph for those who LIVE, WORK or PASS near there. Another "One Stop Banking" location to serve you. This office is open the same hours and offers the same services. Ralph Minkner and his staff at your service.

SEE THE GREATEST ARRAY OF THE WORLD'S FINEST TOYS IN OUR

TOYLAND

BUY NOW use our LAYAWAY

30% to 50% DISCOUNT

Open Sundays 10 to 4



KE 7-8150

SOUTHFIELD at 12 Mile Rd.

OPEN THURSDAY AND FRIDAY TILL 9 P.M.