

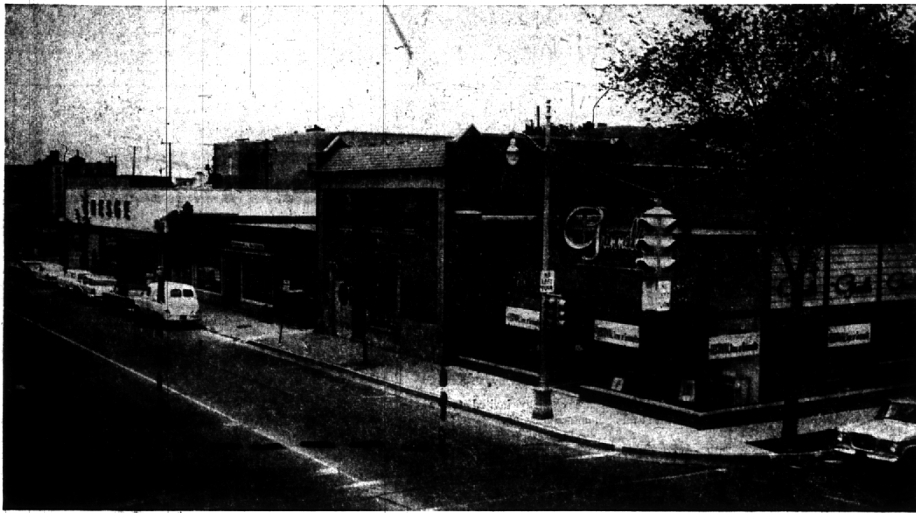
Has the personal attitude of being gratefully gracious for the hospitality of others become an almost vanished characteristic? When one becomes the guest (for an hour or for a week) of another, should not the guest refrain from all criticism of his host's environment? This may require the guest to exercise considerable self-restraint, especially if he is in the habit of such critical attitude.

The Birmingham Eccentric

BIRMINGHAM, MICHIGAN

Thursday, November 12, 1959

SECTION
B



It Will Take Time Before This Error Can Be Corrected

With the consent of the city—but on a day-to-day basis—several Birmingham shops are doing a portion of their business from the public right-of-way. They are located on the south side of Maple avenue, between Pierce and Bates streets.

Most of these buildings, however, were built before the error was discovered. In August 1949, when the owner applied for a building permit for the southeast corner of Maple and Henrietta, the lot line discrepancy first was noted. The building, therefore, was built back a few inches to the correct lot line.

SOME MONTHS AGO, a building addition started in the next block west. The owner asked—and obtained—city consent

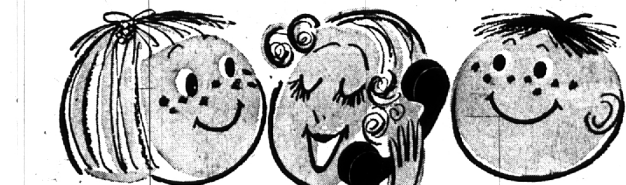
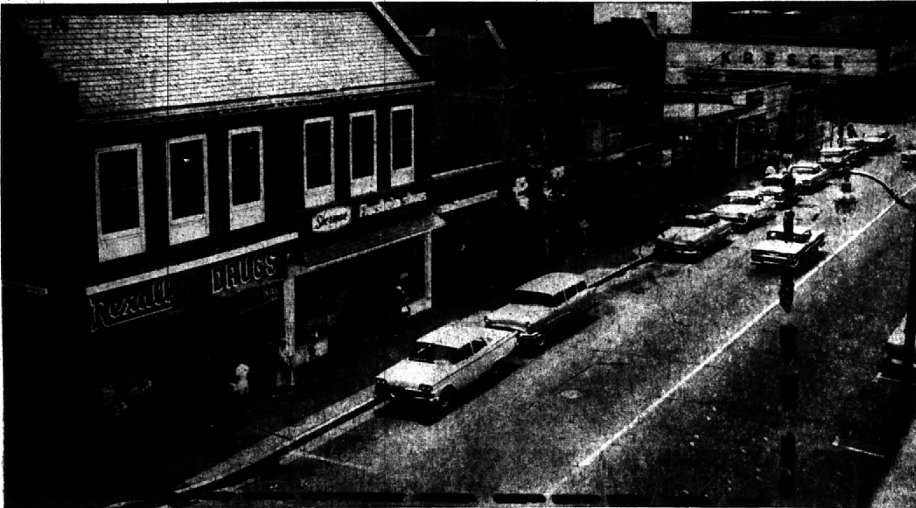
to go a few inches into the right-of-way because his existing building already was over the line, as was the building on the other side of the addition.

The encroachment varies from a maximum of 18 inches on the west line of the second lot from Bates streets, to a minimum of 3 1/2 inches on the east line of the lot on the southwest corner of Pierce street.

The TOP PHOTO looks east on Maple from the corner of Bates street. The BOTTOM PHOTO looks west from Pierce street.

Brackets in both these Eccentric staff pictures indicate the buildings which are out into the public right-of-way.

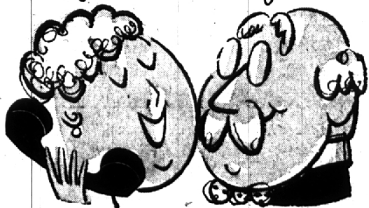
When existing buildings are torn down and replaced, fronts of new structures will be positioned on the proper lot line.



Telephone yourselves together

A family, far apart, can get together in a hurry by Long Distance. Why not call tonight?

Rates are low. For example, any evening or on Sundays you can call places a thousand miles away for as little as \$1.25. See your telephone directory for a list of Long Distance rates.



Michigan Bell Telephone Company
It's faster, more fun, to dial direct

MARK WESSEL
• Pianist • Composer • Teacher
Studio at 3815 Old Indian Trail
Orchard Lake FE 4-5666

SEE THE NEW 1960
AUDIOPHILE SERIES OF
COMPONENT MUSIC
ENSEMBLES BY
STROMBERG-CARLSON
There is Nothing Finer
Birmingham Electronics
141 E. Maple MI 6-5440
Across from Cunninghams

**The K. O'Connor
Reading Clinic**
Diagnosis
Remedial Instructions
Speech Therapy
Individual and Group
BY APPOINTMENT ONLY
1040 E. Maple Road
Birmingham, Michigan



Face and Feature Corrections
Face Peeling
Carolyn Nilson,
Stockholm graduate
Her Cosmetics are
World Famous
772 E. Maple MI 6-7373

JAMES H. GARLICK, JR.
1955 QUARTON ROAD BLOOMFIELD HILLS, MICHIGAN

- RARE VALUES IN DIAMONDS AND OTHER PRECIOUS GEMS
- CUSTOM DESIGNING IN GOLD AND PLATINUM
- APPRAISALS MADE FOR ESTATES AND INSURANCE

FOR APPOINTMENT PHONE MIDWEST 4-0637



Open a Charge Account
at Bill Williams

LI 3-4480
1107 Crooks Rd. (at Main) Royal Oak

ONLY YOU
CAN GIVE . . .
ALL THE LOVE
THAT A GIFT
CAN HOLD
in a
portrait by --

bill williams
"the best
in photography"

SHOP EARLY CHRISTMAS

As advertised in GOOD HOUSEKEEPING, PARENTS' and MY BABY



Yes We Have
Carters new super-warm
"Polar Knit" Sleeper \$7.95 & \$8.95

A special "Polar-Knit" fabric scientifically designed to keep cold out and heat in. Tiny thermal pockets are "knit in" for marvelous extra warmth. Soft as a snowflake too. Two-piece pull-over style. Top has ribbed collar and cuffs. Pant has all-elastic waist, elasticized ankles and plasticized soles. Machine washable and no ironing needed. Yellow, azure, pink, red. 3-8 yrs.

Speaking of warmth—Carter's own Snap-Fastened Jama-Blanket in 100% Acrilan blanket fabric. Takes the place of a blanket. Azure, yellow, pink, red.

S-M \$8.98
L-XL \$9.98



Everything For Your Baby At Mulholland's