

OUTDOOR LIVING

Winter Damage May Have Hurt Those Shrubs

An unusual amount of winter damage to some shrubs on home properties has been showing up in recent weeks, according to the American Association of Nurserymen, which urges home owners to look over their shrubs carefully and replace them where necessary. The past winter of unusually low temperatures early and especially sharp changes in temperature has been severe on some unprotected plants outdoors.

THERE ARE several ways to observe whether plants have been damaged severely, or even winter-killed. If they show no green

growth when other plants of the same kind are doing so, they probably have been severely damaged. To double check, snap off a twig or two. If it is dry and brittle, shows no green whatever under the bark, you can be sure of the damage. Some damaged plants can be pruned or cut off a few inches to a foot above the root crown, after which, usually depending on the species, they may or may not regain their vigor.

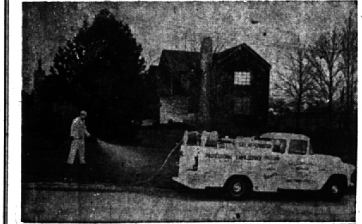
In case of unusually severe damage, however, it generally is preferable to replace the plant with a fresh one from your nurseryman.

IT IS WISE to check plants for winter damage early, so they can be replaced as soon in the season as possible, since some nurseries also have suffered severe damage and the supply later may not be so plentiful as in former years. Check all your shrubs, including rose plants, the nurseryman's association advises.

Lawn Fertilizing Weed Killing Insect Control Chickweed Eradication

NOW You can have the benefits of all the latest scientific discoveries in lawn culture. And enjoy a lush, green, healthy lawn all season long. By adopting the modern AGI-SPAY method.

We use only the highest quality materials approved by U.S. Government and State testing laboratories.



WHY struggle with a half-starved, pest-ridden lawn, with old-fashioned methods?

SOME OF YOUR NEIGHBORS have, and are still using our service. Ask them how easy and inexpensive it is to grow a luscious, pest-free lawn—then call us for quotations.

FERTILIZE - BLOOMFIELD LAWN CULTURE

LincIn 8-0171

Be Careful When Pruning Evergreens

The objective in pruning evergreens should be to keep them in form. By observing their character, we can schedule the time of pruning.

For little pruning, once or twice each year, has a certain dwarfing effect on the growth of the plants and will eliminate the severe cutting back.

The dormant pruning—except for the pine family—is performed in late fall or early spring. For exposed locations choose the spring.

THE SUMMER pruning is timed for mid-June to early July on the new growth which the plant produced during May and June. The following new growth, occurring late July to mid-September, has a chance to ripen before severe winter sets in. The severe cutting-back should be held for early spring only.

By forming the shape of your evergreens, either spreading or upright, make sure the base of the plant is wider than the top, so all parts of the plant get as much sunshine and rain as possible. In a straight up and down form, the base of the plant often thins out and becomes leggy. If you must have a cylindrical or square form, thin out and shear the upper one-third of the plant.

THE ARBORVITAE, white cedar, and its forms, are generally satisfied with one early spring pruning. If, in the pyramidal form, the branches appear, cut them back. If they are to grow several years, and a multiple-stem tree is the result, a sheet storm can cause great damage.

The now popular American Arborvitae hedge form should be pruned conically in the younger stage, to widen and thicken the base. Here the heavy side growth is necessary.

THE JUNIPERS. Most of these need pruning every year to hold them in proportion to your home. The upper one-third of the plant produces the heavier growth, which needs thinning and shearing.

The strong growing spreading Junipers, like Pfitzer and Hetz, need attention twice a year, early spring or late fall and early July. Excessive growth can be cut back to a point where a few side branches remain. Other smaller branches of the main body of the plant, lightly pruned, will fill out the plant again in one or two growing seasons.

The Creeping Junipers, like the Andorra, should be pruned lightly once a year on the tips. Give Junipers room for air and sunshine.

THE TAXUS or Yew. These, of all the Evergreens, respond well to

any kind of pruning. Even real old wood will reproduce many new shoots, when severely cut back. Well-shaped plants are kept that way by pruning early spring and again mid-June.

The Pine. These are the exception to the general rule of pruning. The new candles are to be cut back between the 10th and 20th of June only, when the new growth is about two-thirds developed.

Several leaders will grow out, from which you select the best one and cut out the inferior competitor. Here again is one exception, the White Pine. Its new candles are homeowners can now grow faster cut back early in July. The dwarf and use less fuel.

Mugho Pine is kept low in foundation plantings.

THE SPRUCE and Pines, under fair conditions, will grow into shapely trees much by themselves. Should pruning be required, it should be done on the new growth during early July.

If a leader is cut back, it will be necessary to form a new one, by selecting a strong side branch at the top, which, when tied up straight will form the new leader. The Douglas Fir in this group needs most attention, as it tends to grow irregular.

For more information contact your nurseryman or your county extension agent.

TASTE TREAT New 1959 LP-GAS ranges feature broilers with penetrating infra-red heat. Suburban and rural White Pine. Its new candles are homeowners can now grow faster cut back early in July. The dwarf and use less fuel.

MAY REMINDERS

1. Peonies require plenty of water to fill out the buds and they also respond well to an application of AGRICO'S 5-10-5 or STADLER'S 4-12-4.
2. If you want LARGE flowers from your peonies pick off the side buds.
3. If you want to get your June 1 to 15th application of lawn fertilizer spread on time BUY a LAWN BEAUTY SPREADER and don't depend on borrowing one when you need it.
4. Stake your peonies before they become very large. Use ADJUSTO STAKES or 1 or 2 ring metal peony supports. Spray your peonies with BORDEAUX when they are 4 inches tall.
5. DAHLIAS may be planted in another week. Divide dahlia clumps carefully because pieces with broken necks will not grow. Neither would you or the dog.
6. GIADIOLI should be soaked in LYSOL solution (4 teaspoonfuls to a quart of water) for six hours. Plant immediately. Dust with DDT after plants appear.
7. Chrysanthemums can be made into bushy plants by pinching judiciously (as you would any young thing) until July 15th, then go and pinch something else or play golf.
8. Questions on ROSE growing may be asked and answered at our store at 8:00 p.m. on May 8th. A moving picture on Roses will be shown and 2 experts on care and spraying will be present.
9. A TROJAN SPRAYER is the answer to a maiden's desire to relieve her husband of a lot of hard work. Power plant provides 60 lbs. pressure with which to inundate tall trees or the measly lawn weeds.
10. As soon as hollyhocks start to grow spray them with FERMATE (or dust them) to prevent rust.
11. POTATO EYES are looking at you askance. They seem to say "Why do you buy potatoes and cut them up when it is only us—the eyes—that can produce" 100 eyes of Irish Cobbler or Pontiac Reds for \$2.10—or 2c an eye. An eye for an eye will produce more expensive than one eye left alone will produce 5 to 10 potatoes—each with several eyes if that is what you are after.
12. Our statutory and fountain material is depleted but will soon be replenished.
13. 100 lbs. of salt to 200 sq. ft. will control weeds and grass in the asparagus patch. Be sure to spread 4 lbs. of 5-10-5 or 4-12-4 to each 100 sq. ft. before or after cutting.
14. Spray lilacs and other plants subject to BORERS WITH BORER SPRAY now.
15. WHAT SHALL I DO ABOUT MY ROSES? Come to our shop at 8:00 p.m. on May 8th and learn from moving pictures and spray experts. Coffee free.
16. The GARDEVATOR is the easiest and least damaging method of loosening poor turf to receive a bit of extra seeding. They are NOT for rent.
17. CRABGRASS can be almost eliminated by the application of PAX (if you have not fertilized your lawn) or CHLORDANE (if you have) at any time before the seeds germinate—which looks now as though it would be May 12th or later. Don't tarry, however, if you want the best results. It costs about \$25.50 for each 5000 sq. ft. but this is a two-year control and possibly longer.
18. CHICKWEED has 3 new enemies:—
 1. You.
 2. DuPont's CHICKWEED KILLER (a spray deal)
 3. Vaughan's (Dow Co. Chemical called KURON) CHICKWEED KILLER (a dust).
19. Dandelions SOWN now will make good greens next spring. 15c a packet.
20. Dandelions SPRAYED about May 15th will be pretty well eliminated.
21. SPRUCE GALL on needle trees can be quite well controlled by spraying with 50% MALATHION.
22. Dead spots in the lawn (some due to snow mold) should now be scratched up and seeded and covered with a medium of peat moss and watered and watched and enjoyed.
23. SOMETHING NEW HAS BEEN ADDED! We have become a TORO DEALER handling TORO MOWERS, POWER HANDLES and ACCESSORIES.

QUALITY POWER EQUIPMENT

24. Don't forget MAY 8th; this will be an evening not to forget.

McCLELLAN-BALL CO. SUPPLIES

BIRMINGHAM, MICHIGAN

Phone MI 4-4133

SAVE UP TO OFF

EVERYTHING for easier gardening!

TOOL UP

FAMOUS MELNOR OSCILLATING SPRINKLERS WITH DIAL CONTROL

Reg. \$7.95 ... **\$5.99**
Reg. \$9.95 ... **\$7.99**
Reg. \$12.95 ... **\$9.99**

McGuire BAMBOO RAKE Reg. 1.49 ... **99c**

Long Handle DIGGING SHOVEL Reg. \$2.98 ... **\$1.99**

for spring gardening!

PAINT WITH Plastic!

SAVE \$2.00 A GALLON

MACOLAC ODORLESS MIRACLES LATEX MIRACLE PLASTIC PLANT PAINT WHITE

FINEST PAINT in 100 YEARS

\$4.99

MACOLAC PORCELAIN FINISH Color of Designer Colors

Now Only **\$6.95** Gal.

- A TRUE PLASTIC!
- WON'T BLISTER OR PEEL!
- SCRUBABLE!
- BRUSH IT OR ROLL IT!
- CLEAN-UP WITH WATER!
- DRIES IN 30 MINUTES!
- ABSOLUTELY ODORLESS!
- HUNDREDS OF DECORATOR COLORS!

complete with couplings

RELY ON SCOTTS

5 Year Guarantee . . .

50 ft. reg. 2.98

\$1.77

PLASTIC GARDEN HOSE

complete with couplings

Turf Builder

SCOTTS

A greener lawn is up to you!

Wishing won't make grass greener. TURF BUILDER will! Its steady-feeding granules give your lawn the balanced diet it needs for true beauty—without burning, without causing extra mowing. Stroll on odorless, clean TURF BUILDER with the work-saving Scotts Spreader, your year-round way to a better lawn—automatically!

buy both—save \$7.00

TURF BUILDER®—life-giving nutrition, builds thicker, greener lawn. 2 bags, 10,000 sq ft 8.95

SPREADER for SCOTTS—precise application of every product needed to insure a better lawn 16.95

if bought separately 25.90

ScotTS TOGETHER NOW ONLY 18.90

SAVE 30%

Self Propelled ROTARY POWER MOWER

\$69.50

Thrrottle and Starter in the handle

• 2 1/2 H.P. Briggs Motor . . . 4 cycle

• 23" Cut . . . Rubber tread

• Free wheeling . . . safety blade adapter for added protection.

MANY OTHER STYLES AND SIZES . . .

OPEN SUNDAYS 10 A.M. to 4 P.M.

FEDERAL HARDWARE SUPPLY

OPEN THURSDAY, FRIDAY EVENINGS TILL 9

SOUTHFIELD RD.

EL 6-7300 KE 7-8150

12 MILE RD.

YOU GET MORE WITH A Kresge MOWER

We've enlarged our mowers, added improved features, and cut the price! You can't beat these mower values!

21" - \$37.88

Wonderfully adequate for average lawns.

24" - \$47.88

For larger yards, heavy duty, faster mowing.

YOUR CHOICE OF 2 GIANT VALUES

24" Full 24" cut with 3 H.P., 5 cycle Lauson Engine. \$47.88

21" Full 21" cut with 2 1/2 H.P. Clinton Engine. \$37.88

BOTH MOWERS HAVE—

RECOIL STARTER requires no hand winding of starter cord.

STAGGERED STEEL WHEELS with tractor type tires for smooth cutting, over rough terrain.

OLITE BEARINGS that never need oiling. 5 Year Engine Replacement Warranty re-

places your entire engine anytime within 5 years at a minimum cost.

HEAVY GAUGE STEEL CHASSIS with LEAF MULCHER.

CHROME PLATED ADJUSTABLE HANDLE for easier operation and storing.

Layaway Now—Small Weekly Payments—No Carrying Charge

WEST MAPLE AT HENRIETTA

S. S. KRESGE COMPANY