

Jr. Achievement Really Achieves In Area Contest

Two Birmingham Junior Achievement companies are "learning by doing"—as directed in the J.A. motto.

They apparently are learning and doing well. One took second place, the other won an honorable mention in competition with 333 southeast Michigan companies.

Tri-B-K notched second with its "Kiddie Coat Rack." The company, sponsored by the Michigan Bell Telephone company, was judged on its general proficiency, said Warren Freshwater, a Birmingham J.A. co-ordinator.

"FIFTY PER CENT of the score is based on the product," Fresh-

water said. "The other 50 per cent comes from the company's administration."

Tri-B-K—as all other J.A. companies—set up its own production line, handled the distribution of the product, kept its own books.

Their proficiency in bookkeeping, efficiency in manufacturing in distributing the product, all count toward the final score.

THE COMPANY is being presented with a plaque. Each of the 22 young business men and women (average age: 17½) receives a certificate of achievement.

Kimberfeld Products—sponsored by Chrysler Missile division—received its honorable mention for the manufacture, packaging and distribution of bath suds.

The youthful enterprises reach the end of their fiscal year this week. They face dissolution—not a sign of failure, just the normal J.A. process. New companies will be formed next October, as a new crew gets a chance to try its hand at the processes of free enterprise.



Comes To Dinner with Help

Chuck Coffin gets an assist from John Rosier, Guy Brown and Jane McKinley, characters in the BHS Production of "The Man Who Came to Dinner." Cast members and directors watch. They are (left to right): Bob Flaherty, Sue Reuther, Jane Griffith, Miss Roberta Arnold, Director, and Ricki Johnston. Standing are Judy Boyer, Student Director and Marty Allgire.

BIRMINGHAM HIGH

MAPLE MATTERS

By STEVE TAYLOR

Use 'Mardi Gras' as J-Hop Theme

The theme of the 1959 J-Hop is to be Mardi Gras and the date for the big dance is May 23. Tickets will cost \$4.00 and only 500 are to be printed and sold. This sets a very definite limit on the number of students who can attend. There will be two bands similar to last year's dance. Work on the dance has been subdivided into committees under the supervision of general chairman Jane McKinley. Other committee heads are Berrie Wilson, publicity; Jean Buchanan, programs; Julie Miller and Paul Robertson, decorations; Karen Bennet, refreshments; Nancy Wesch, clean-up; Anne Bauer, tickets, and Marty Allgire, chaperones.

Contest speech classes are beginning work on debate to prepare for next year's season. The topic for next year will be on some phase of labor. The class is working on the topic, "Resolved: that the United States should repeal section 14-B of the National Labor Relations Act."

Scribblers Club plans to attend the Wayne State university production of A Midsummer Night's Dream this Saturday night at Wayne State. The club is still accepting applications for membership to fill the vacancies which will exist when present members graduate.

The teen center will hold a Beatnik party this Friday evening and will award prizes for the most unusual and appropriate costumes.

This is in addition to the regular program of cards, games, and dancing. Attendance has proved very satisfactory thus far.

The Westminster Youth Fellowship of the Presbyterian church of Birmingham is presenting County Fair, a variety show to be held in the recreation hall of the Presbyterian church this Thursday and Friday at 8 p.m. The tickets cost \$1 and the proceeds from this show will be used to help finance a young peoples' work camp this summer in New Mexico.

The Birmingham high school student congress is holding a special 25th anniversary banquet to honor present and past members of this student government body. The banquet is to be held at the Rotunda Inn and plans are being made to have as many of the old officers of student congress of past years in attendance at this meal.

The Civic Control Day held by members of Birmingham's Senior class last Monday was a huge success. The city commission and the appointed officer began the day with a brief explanation of the city government by assistant city manager, R. S. Kenning.

Then, Mr. Kenning took the group on a tour of the Municipal building, the Department of Public Works, the Adams fire station, and finally, the sewage department. After lunch, the appointed officials spent the afternoon conferring and, in some cases, actually helping their counterparts in the city government.

In the evening, the group held a mock city council meeting in which reports of the day's business were read and discussed along with other matters currently before the commission. The meeting was a capably run under the auspices of student mayor Mike Brandt, and many of the adults present for the actual meeting were favorably impressed by the students' efforts.

Emily Prekel: Has Suitcase - Does Travel

Emily Prekel, recently appointed office manager of Bee Kait's Travel Service, 236 N. Hunter Blvd., has a travel record that reads like a Lowell Thomas Travelogue.

This is a young miss that really loves her work. Miss Prekel, in the ten years she has been in the travel profession, has circled the globe; visited South America, enjoyed moonlit nights on Acapulco Bay in Mexico, has run the risks of crossfire in the Near East, adventured in the insect-infested jungles of the Amazon. She has cruised to the West Indies, to Hawaii and the Mediterranean. "All part of the job," she says.

Emily began her travel career as a reservation clerk with one of the local agencies. She was more recently with a Travel Service as Manager of their Eastland Branch. She enjoys a large following among the many business firms that cluster the East Side of Detroit. Miss Prekel was recently appointed a member of the T.W.A. Ambassador's Club.

If you're thinking of travelling, Emily's your gal. Just give her a call at Bee Kait's Travel Service, MI-2170. She'll be happy to give you an information.

Meet our Staff—No. 1 of a Series. Adv.

Curtain Nearly Up on Student Extravaganza

by TONY HAMMER

With one week left before the curtain goes up on their performance of "The Man Who Came to Dinner," BHS students are working harder than ever. "The Man," by Moss Hart and George S. Kaufman will be presented next Thursday and Friday on May 14 and 15, at 8 p.m. in the gym.

Admission will be by activity ticket for students and general admission tickets (\$1) for adults.

The play will be presented in theater-in-the-round style. It is the annual all-school play sponsored by proscenium, the school drama club.

UNDER THE direction of Miss Roberta Arnold, the cast is in its third week of preparation. Judy Boyer is her student assistant.

Chuck Coffin plays the part of wheel-chair-ridden Sheridan Whiteside, noted lecturer and author, who is stranded over Christmas vacation in the middle-class home of Ernest Stanley.

COFFIN is studying a motion picture of Monte Woolley, the original Whiteside on Broadway. The Jam Handy Organization, Detroit motion picture producer, has lent a print of the Woolley film for Chuck to study.

Playing opposite Coffin in the situation comedy is his secretary, Jane McKinley, and Marty Allgire is Lorraine Sheldon.

Others in the cast are Ricki Johnston, Andy Starrett, Jane Griffith, Jim Johnson, Sue Reuther, Lorraine Shafer, Kemal Cowan, Jim Codner, Guy Brown, Julie Borgman and John Rosier.

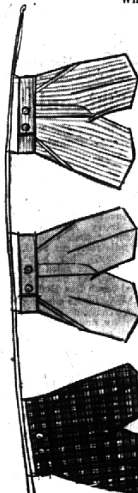
Still other members of the cast are Robin Ode, Jon Lohia, Grant Engard, Dennis Hawley, Bob Flaherty, Dix Humphrey, Don Wehe and Bob Tigelaar.

Stamps 'Going, Gone' Monday

The sixth auction of U. S. and foreign stamps will be held in the Community House May 10, at 8:30 p.m. There will be sixty lots of mint and used stamps and covers. Visa-grams are welcome. The annual election of officers will be held May 25 and the annual picnic at Pine Lake will be held June 27.

Jacobson's
childrens shops

Willetts at Woodward
Birmingham



boys' washable cotton shorts

for long summer wear! top to bottom, half-boxer styles: tan or blue stripe seer-sucker. 4.7 sizes. 2.50

charcoal, sand, blue, antelope kayak cloth, smart assorted tarpoon

cloth plaids, or the paisley belted walk short, sage brown, blue, red, all 4.12

sizes 3.00



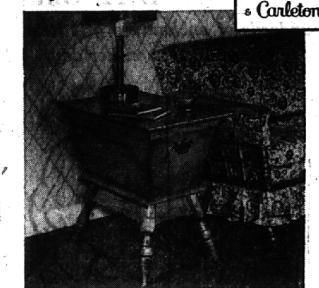
STORE HOURS:
Mon. thru Sat.
9:30 A.M. to 5:30 P.M.

Stewart-Glenn

The Early American DOUGHBOX END TABLE

One of many Early American occasional tables, designed for use with any of the famous Sprague & Cateion maple Living Room groups, is the unique Doughbox End Table—pictured here with the popular Peterborough Settee.

by Sprague & Cateion



Anne Wilson Interior Decorator Will Assist You With Decorating Problems At No Additional Cost Federal 2-8348

For MOTHER'S DAY Visit Stewart-Glenn's "ARCHWAY" for unusual Gift Ideas!

Stewart-Glenn

1680 South Telegraph Road
¾ Mile No. of Miracle Mile
Open Thurs., Fri., Mon. Even 'til 9

Welcome Mother's Day Gift!



UNFINISHED DEACON'S BENCH

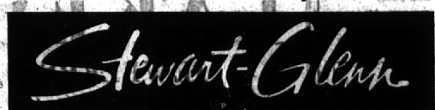
Decorate It To Suit Your Decor!

A welcome note at your front door... ideal also in entrance hallway, dining room or bedroom... our "Deacon's Bench" available in two sizes: 36" x 33" high with 14¼" seat depth, 48" size is 33" high with 14½" seat depth.

36" unfinished... \$24.95 48" unfinished... \$29.95

(As shown, black & gold decorated available)

Anne Wilson, Interior Decorator Will Assist You With Your Decorating Problems



1680 SOUTH TELEGRAPH, BLOOMFIELD
¾ Mile North of Miracle Mile

Federal 2-8348 — Open Thursday, Friday, Monday, Till 9
CONTEMPORARY AND COLONIAL FURNISHINGS SINCE 1917
OPEN TONIGHT

WE'RE BEACHWEAR HEADQUARTERS FOR GIRLS OF ALL AGES

heading north, south, east, west? get your round-trip ticket to vacation fun right here... we have sun-and-surf togs to take you everywhere. swimsuits in all styles; chic little jackets; giddy beach hats and towels; water-tight swimcaps; sunglasses; and water-repellent lined tote bags to carry them all!

2-Hour Free Parking Have Your Ticket Validated When You Make a Purchase at Jacobson's

Jacobson's childrens shops
Willetts at Woodward Birmingham