

Horn Fuel Co. Opens Branch Yard

Horn Fuel & Supply Co., one of a new Birmingham yard at 575 S. Detroit's oldest and largest building. The continuing expansion of building materials dealers has opened.

ADVERTISEMENT

Dave Clements, Commercial Head of Bee Kalt Travel Service.

Energetic Dave Clements began his career in the Upper Peninsula where he was a News Analyst and Disc Jockey in Sault Ste. Marie. He became interested in travel, as he laughingly puts it, during his Navy days in World War II.



Some years with the Traffic Division of General Motors and a few years with a local Travel Service round out Dave's background. He has been working with business firms on group tours and handling multiple travel arrangements.

He plans a further expansion of the Commercial Division at Bee Kalt's to facilitate the handling of tickets and reservations with minimum time consumption.

If you do any Company traveling, why not let Dave handle the details for you. You'll be happily surprised at the speedy efficiency, quiet dispatch of our Service.

Dave's one of the reasons why Bee Kalt Travel Service is known in the profession as the best staffed travel agency in this area. MI 6-2170, 296 N. Hunter Blvd. 1 block north of Maple.

Meet Bee Kalt's Staff. No. 3 of a Series. (Adv.)

struction in the Birmingham area prompted Horn Fuel & Supply Co. to open their new location. As expressed by Robert H. Horn, president of the firm, "We are now in a better position to service the expanding building activities in this area. Our new yard will mean quicker delivery and more efficient service to all of our customers." The company was established in 1931 by Henry F. Horn who stimulated an expansion program which continues today.

Since then, Horn Fuel & Supply Co. has become one of the leading building material suppliers in the Detroit area, offering a complete line of builders' supplies both retail and wholesale.

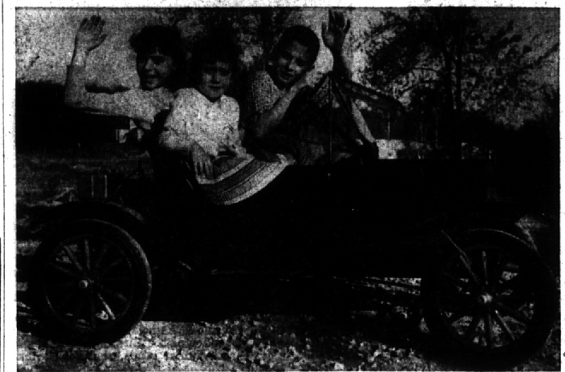
The Soviet-sponsored 1955 "World Youth Festival" in East Berlin was "cozy when thousands of the Red's hustled over to see an American model train exhibit set up by West Berlin's mayor as a counter attraction.

For the Finest in CAMERAS and PHOTOGRAPHIC EQUIPMENT

Depend On the **BIRMINGHAM CAMERA SHOP**

168 So. Woodward Ave. Phone MI 4-0510
22nd Year Serving Birmingham

BUSINESS BRIEFS



First Prize Taken Over by Family

Squirrel road is a busy place these days with a half-size Model T of 1910 vintage chugging around the Tony Spina lawn. The drivers change from time to time but shown here is Costan, 12, who is having his turn at the wheel. Waiting their turn are Kathy, 6, (center) and big sister Julie, 10. The miniature Model T is a recent addition to the Spina family, having been awarded to their father, chief photographer of the Detroit Free Press, by the Standard Accident Insurance company. The car was the door prize at a press reception held recently to kick off Standard Accident's 75th anniversary being celebrated this year. The Spina's live at 3525 Squirrel.

EACH THURSDAY

JENNY HIMELEHOCH'S FASHION SHOW

beginning 12 noon at Greenfield's

Greenfield's RESTAURANT
725 So. Hunter Blvd. Birmingham

TELEFUNKEN

STEREOPHONIC HI FIDELITY
50 years experience in sound reproduction

Trade-In Accepted

- AM
- FM
- Shortwave
- Automatic Phonograph
- Available in many decorator-designed styles
- Guaranteed service by European Factory Trained Technicians

UNIVERSAL MUSIC

Importers — Sales — Service

1600 S. Woodward (West Side), 1 Block N. of 10 Mile ROYAL OAK Open Daily 'til 9 p.m. LI 8-5135

greater stability!

WIDE-TRACK PONTIAC!

Wheels are five inches farther apart. This widens the stance, not the car, gives you road-hugging stability, less lean and sway. Only Pontiac has Wide-Track Wheels!

SEE YOUR LOCAL AUTHORIZED PONTIAC DEALER

WILSON PONTIAC-CADILLAC, INC.
1350 N. WOODWARD AVE. BIRMINGHAM



Name Twiss President At Cycleweld

Sumner B. Twiss, 4365 Charing Way, has been appointed president of Chrysler corporation's Cycleweld Chemical Products division at Trenton, Mich.

Official name of the division has been changed from Cycleweld Cement Products to Cycleweld Chemical Products division. The division is part of the special projects group which also includes Airtemp Marine and industrial engine and Ampex divisions.

C. B. Gorey, Jr., group executive-special products, said: "Since the establishment of the division in 1948 its initial product line of product cement used to bond brake linings to brake shoes has been expanded to include a number of adhesives, sealers, and petrochemical products."

DR. TWISS, 42, first joined the company's engineering division in 1946 as a project engineer after receiving a bachelor of science degree in chemistry from Trinity College, Hartford, Conn., and his Ph. D. in chemistry from Johns Hopkins university.

Some of his memberships include Society of Automotive Engineers, American Chemical Society, American Institute of Chemists, Phi Beta Kappa, and Phi Lambda Upsilon.

ITALIAN

RUSSIAN Group or Private
GREEN FRENCH Free Trial Lesson
PORTUGUESE

Register Now for New Classes

BERLITZ SCHOOL OF LANGUAGES
180 PIERCE BLDG. MI 4-6000
408 EMPIRE BLDG. WO 2-7788
Washington Blvd. at Clifford

President Announces New Plans

Harold Humbert, 310155 Leemoor drive, south Berkshires, president of the Modern Manufacturing company, Detroit, announced his company will expand operations at the Kalkaska, Mich., plant.

Art Nummer, executive vice-president of the company will be manager of the Kalkaska plant.

IT IS expected nearly 35 additional persons will be employed, most women, to make stampings for the auto industry. The present building at Kalkaska will be doubled in size and additional equipment will be moved in.

Thousands of people read The Eccentric Classified Ads. So remember, if you want to sell that in the Want Ad section of The hard-to-get-rid-of article, advertise Birmingham Eccentric.

MODELS HOBBIES

H-O TRAINS
TOYS
OVER 15,000 ITEMS

MODELS HOBBY SUPPLIES

STANDALY 2244 WOODWARD MI 4-3242
GRUBBS POINT 1455 JEFFERSON MI 4-4458

Manley, Bennett & Company

MEMBERS NEW YORK STOCK EXCHANGE

Complete Facilities for Suburban Investors

- ELECTRIC QUOTATION BOARD
- DIRECT NEW YORK WIRE SERVICE
- DOW-JONES NEWS TICKER
- OPEN DAILY 8:30 TO 4:30—SATURDAY 9:30 TO 3:00

Bloomfield Center
West Long Lake Road and Woodward Avenue
Bloomfield Hills, Michigan
Telephone MI 465-7000 Jordan 6-4650

Over a quarter-century in eventful financial times

DETROIT OFFICE
Detroit 26, Michigan Woodward 5-1188

Good Taste Tells the Story

... Hand Tailored ITALIAN SILK by

Higgins and Frank

Here is the zenith of the fine Italian Silks. It has the distinctive air of quality that speaks in cultured new tones. For a distinguished suit, important at all occasions, Silk is an excellent Summer choice.

\$95.00

Higgins and Frank
OF BIRMINGHAM
268 West Maple Road
VISIT OUR BOYS' DEPARTMENT ON LOWER LEVEL
Open Friday Till 9 P.M.

LOOK at it this way . . . and it's easier to SAVE!

"IT ISN'T MONEY . . . IT'S THE THINGS YOU AND YOUR FAMILY NEED!"

A new home . . . a new car . . . that new, larger TV! Your family's dreams will come true with amazing speed if you'll add to your savings account here at regular intervals. If you don't already have an account here, at Birmingham Federal Savings, open one today and see if we're not right!

Where you save does make a difference

3%
CURRENT RATE

Birmingham FEDERAL SAVINGS
MI 4-1711 INSURED SAVINGS
99 West Maple Corner of Plaza 3055 W. 12 Mile Rd. Bentley