

The Birmingham Eccentric

BIRMINGHAM, MICHIGAN

Thursday, May 21, 1959

SECTION
B

BUSINESS BRIEFS

Development of one's abilities to "tailor" his statements to others improves human relations. So often one utters words that are spoken thoughtlessly, or without required tact—and consequently "rub" another the wrong way. Often this is done quite unintentionally, too. Each person is an individual, thinks differently, reacts differently.

Wide Choice Of Homes On Market

With the spring home sales market now at its peak in variety of offering, south Oakland residents have an "annual opportunity" to take part in the current trend toward the purchase of a home as an investment in good living and future financial return.

This observation was made today by B. F. Chamberlain, president of the north Woodward Real Estate Board, on the basis of sales listing reports received from the 74 Realtors who compose the board, and an analysis of recent market figures provided by the National Association of Real Estate Boards.

"SPRING traditionally brings a heavy influx of good quality homes of all types on the market," Chamberlain said, "and this year is exceptional only in that the North Woodward homes now being offered for sale seem to offer an unusually wide range of types, locations, and prices."

The realtor executive went on to explain that the census bureau has estimated that about one out of every five persons changes his residence in the course of a year.

He added that in the case of families with children, many moving plans are delayed until the close of the school year in spring.

Local Men Sell Radio Station

Charles H. Mayne, 232 Lone Pine, Bloomfield Hills, and John C. Emery Jr., 132 Waterfall Lane, Birmingham, have sold their interests in radio station WHRV in Ann Arbor to the Zanesville (Ohio) Publishing Company subject to approval of the Federal Communications Commission.

The two men have owned the full time station which broadcasts on 1600 kilocycles with 1,000 watts of power since January, 1956.

The studio and transmitter of WHRV is located midway between the cities of Ann Arbor and Ypsilanti. The station went on the air in 1947 and serves the Ann Arbor-Ypsilanti metropolitan area.

Manley, Bennett Opens Suburban Branch

A stock brokerage office combining Wall Street efficiency with a suburban atmosphere was formally opened recently at Bloomfield Center at Woodward and West Long Lake roads, Bloomfield Hills, by Manley, Bennett & Co., prominent Detroit brokers.

The formal opening consisted of a series of receptions for the press, representative of banks, financial and investment firms, and customers in the area.

Partners and representatives of Manley, Bennett & company from both the suburban and downtown Detroit offices were present to greet the guests.

"Big Board" record transactions on the New York Stock Exchange and branch the same trading facilities as our main office in the Buhl Building," he added.

As resident partners in charge of the new office will be Edward T. Bennett, Jr. and Frederick J. Zoellin.

Also to be associated with the Bloomfield Hills office will be Robert J. Moons, David T. Manley, Thatcher W. Root and Jack Hunter, registered representatives formerly affiliated with the main office. Clerical personnel make up the staff component of seventeen.

Design plans were worked out to assume the most efficient facilities for serving customers. Lighting is engineered for maximum visibility. A special installation was developed to prevent reflections and highlights from the quotation board. The extensive remodeling includes acoustical treatment, new wiring, heating and air conditioning systems.

Howard H. Kehrl Kehrl Earns Alfred Sloan Fellowship

Howard H. Kehrl, 3870 South Miller—Bloomfield township, director of Chevrolet Engineering laboratories at Warren, has been awarded an Alfred P. Sloan Fellowship in executive development.

Kehrl's selection as one of 45 young men in industry to win the honor was announced by Harry F. Barr, Chevrolet chief engineer.

A Detroit, Kehrl graduated from Denty high school, attended Wayne State University three years and entered the Navy college training program in 1945.

KEHRL JOINED General Motors in 1948 as a college graduate-in-training on the research staff. His major assignments from that time have been in the engine and transmission fields.

He was promoted to research engineer in 1949 and later served as an assistant staff engineer at the Cadillac tank plant in Cleveland.

Kehrl transferred to Chevrolet in 1954, as an experimental development engineer. He was promoted to assistant staff engineer in 1957 and to staff engineer in charge of the laboratories last March.

Nitroform Inc. Appoints Rossi

Nitroform Inc., Birmingham, has appointed Rossi and Company, Detroit, to handle all phases of its national advertising and sales promotion activities.

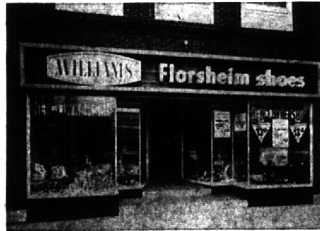
Come In And Save During This Great Double Event!

GRAND OPENING AND 1st Anniversary

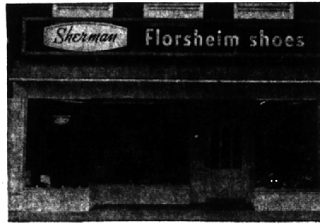
Excitingly New, Dramatically Different

Sale!

SALE STARTS FRIDAY
SALE DAYS THRU MAY 29



FORMERLY WILLIAMS BOOT SHOP—1958



NOW SHERMAN'S FLORSHEIM SHOE SHOP—1959

Come and see Birmingham's most unique, Colonial Type Family Shoe Store, featuring Florsheim, Roblee, Pedwin and Sebago-Moc for Men—Buster Brown for Boys and Girls—Glamour Debs for Teens.

Buster Brown
in person, will appear in our store from 10 to 3, Saturday, May 23rd.



MOTHER, give your youngster the thrill of a young lifetime—the chance to meet the famous Buster Brown, in person. Buster will be in our store all day Saturday, May 23rd, 10 A.M. to 3 P.M., just to meet his many young friends, And, he has a small free gift for your youngster, too!

Roblee & "London Walkers"

GENUINE SHELL
CORDOVANS
PLAIN TOE STYLE
\$14.88
REG. \$20.95
Sizes 6 1/2 - 12
Widths A - E

Roblee
"Catalina"
Slip-on
\$8.88
Reg. \$12.95

Roblee Hack Ripple Sole CHUKKA BOOTS

Sand Biege
Brushed Leather
\$12.88
Reg. \$15.95
Sizes 6 1/2 - 12
B-C-D Widths

FLORSHEIM presents the American Look



Made better to look better, fit finer and last longer because they're Florsheim... America's finest.

FREE BASEBALL TICKETS
The First 100 Customers Making A \$13.00 Purchase Will Receive A Reserved Seat Ticket To The Detroit Tiger-Cleveland Indians Game—Sunday May 31st.
(Limit One Ticket Per Purchase)

FREE GIFTS FOR THE FAMILY

- ★ BALLOONS & COMIC BOOKS For the Kiddies
- ★ ADLERS SOX (Reg. \$1.00 Value) FOR MEN AND WOMEN
- ★ CIGARS for Dad

Men's, Women's, Boys' & Children's
CANVAS SNEEKERS & BASKETBALL SHOES
First Quality
Washable All Sizes
\$2.99
Reg. \$5.00 Value
Red, Blue & White
Arch Supports
Cushion Insoles
Size Men's 6 1/2 - 12
Boy's 5 1/2 - 6
White Only

Sherman SHOES
MI 6-8788 115 W. MAPLE
OPEN FRIDAYS TIL 9 P.M. DETROIT BIRMINGHAM

Elegant "PALM BEACH" FORMAL WEAR



We present a special selection of famous "Palm Beach" evening wear in the latest and most correct models for year round wearing. The unique Palm Beach fabric is lightweight and very wrinkle-resistant. The costly bias-cut collar—a special Palm Beach feature—assures a perfect fit.

- White Dinner Jacket \$35.00
- Light Weight Tux Pant \$13.95
- Black Year 'round Weight Tuxedo \$49.95



Dickinson's
WABEEK BUILDING — BIRMINGHAM
SAGINAW AT LAWRENCE — PONTIAC