

Leaves Germany

Pfc. John Kelley, son of Mr. and Mrs. John Kelley of Wallace street, Birmingham, departed from Germany late in January for Fort Europe the following March.

Bragg, N. C., with the 24th division's 18th infantry. Kelley, a cook in the company, entered the army in June 1955 and arrived in Europe the following March.

March 5, 1959 THE BIRMINGHAM (MICH.) ECCENTRIC 3-A



BITS OF BIRMINGHAM

The first Saturday of each month, at one o'clock p.m., the Birmingham siren is tested as the audio device to sound in case of an actual air raid by an enemy government. Local civilian defense is responsible (in conjunction with the fire department) for the operational maintenance of the siren. This shrieking apparatus formerly was used to sound a fire alarm, and its main purpose was to call members of the Birmingham fire department's volunteers, when needed. So, when you hear it day after tomorrow, just recall this Bits about it.

Now that street surfaces are being exposed by warmer daytime temperatures, municipal officials are examining their street surfaces to see the extent of damage by the weather. Of particular interest will be new streets which have been constructed in the past 10-15 years with "air-entrained" concrete. This involves addition of billions of tiny air bubbles into each cubic foot of concrete, providing microscopic spaces which absorb pressures of recurring freeze-thaw cycles. And we sure have put this process to a severe test in the past 10 weeks!

Can you imagine using axes, picks, spades and shovels to remove the ice from the street in front of your house? Well, it actually happened! A half dozen dads and lads—neighbors of Birmingham City Commissioner William Burzum—cleaned off the west end of Winthrop street Saturday. "They actually removed the ice by hand!" exclaimed Burzum, who got the razzberry from his neighbors for attending a city commission committee meeting instead of lending a hand with the ice. But Burzum helped that afternoon. He spotted a city grader working on a nearby street. The operator cooperated and took off the rest of the ice on the other end of Winthrop. "Those fellows could hardly move by Monday," Burzum said sympathetically.

"It was one of those small town things that make Birmingham a joy to live in, even though it's growing big," said a lifetime resident this week. She's Mrs. Margaret Tracey Martin, who looked out her front window Sunday

morning to see two station wagons full of kindergarten children from First Baptist church arriving with gifts for her 5-year-old son, Bobby. The children couldn't be allowed to go in the house because Bobby was too sick for visitors after a complicated tonsil operation two days before. But they came during church nevertheless, and cheered Bobby from outside while Mrs. Cecil King and Cy Seifert, their Sunday school teachers, delivered a box containing gifts from each child. Other visitors from the church came from Mrs. Mariel J. Prowse and Mrs. Kenneth D. Kilbury.

A woman approached Birmingham City Clerk Irene Hanley's municipal building counter Monday, and asked for a new dog license. (Deadline was March 1, the day before.) "I was by here Saturday, but no one was here," the woman reported. "Oh, is that right?" Miss Hanley responded. "We were here until after 4 p.m. to receive city election nominating petitions." The woman was taken aback. "Okay—so I admit I was lying. Do I still have to pay the dollar penalty?" Miss Hanley smiled. "No, you don't. Because the deadline fell on Sunday, we're making today the deadline." Case of a lie that was fraught with naught?

Appoint Chairmen To Assist 1959 Easter Seal Drive

The Oakland County Society for Crippled Children has appointed area chairmen for the 1959 Easter Seal campaign.

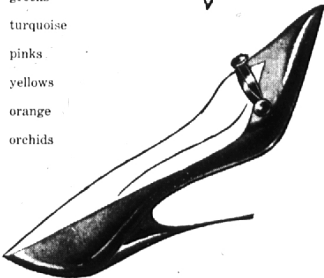
Chairmen for this area are: Mrs. Arthur F. Blakeslee, Birmingham; Ray M. MacArthur, Bloomfield Hills; and Theodore A. Worthman, Southfield.

The intended mailing date for 1959 Easter Seal appeal letters to county residents was Feb. 27, but due to a broken steam pipe which ruined the Society's headquarters, mailing will be delayed two weeks.

The Society has requested that the various local organizations and service clubs in the county make contact with the area chairman and offer what assistance they can to make a successful campaign.

Beige BONE

wear with
pale neutral beiges
warm beiges
toasty tones
wood toned beiges
browns
blues
greens
turquoise
pinks
yellows
orange
orchids



Borrell

Most exquisite of all Spring Patterns.

COLORS: Bone & new Spring Blue.

Herbert Burr

SHOE SALON

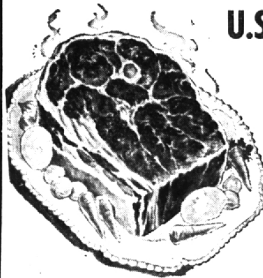
255 N. Woodward, Birmingham

Tweedies.
\$18.95

CHUCK ROAST

U.S. CHOICE or PRIME
BLADE CUT

49^c lb.



Swift's Premium

SLICED BACON

59^c lb.

FRYING CHICKEN in PARTS

LEGS 49^c lb. BREASTS 69^c lb.

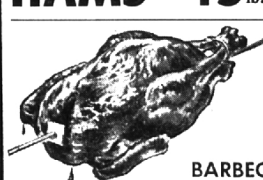
WINGS 19^c lb. GIBLETS 29^c lb.

NECKS & BACKS 10^c lb. LIVERS 99^c lb.



Smoked HAMS 45^c lb.

Shank Portion



CORNISH GAME HENS

A TASTE TREAT . . . READIED FOR YOUR TABLE . . .

Each 99^c

BARBECUED TO PERFECTION IN OUR STORE

Fresh Fish & Other Sea Foods Featured Throughout Lent

DAIRY DEPARTMENT

Twin Pines—Large or Small Curd

COTTAGE CHEESE lb. 19^c



Allsweet MARGARINE

PINCONNING CHEESE

Mild 49^c lb. Medium 59^c lb. Sharp 69^c lb.

Awrey Bakery Specials

Individual Cream Top Streusel Coffee Cakes 3 for 53c
(DAILY EXCEPT MONDAY)
Orange Glazed Buns 6 for 38c
Individual Streusel Nut Coffee Buns 78c Each
(FRIDAY & SATURDAY ONLY)
Pineapple Buttercream Spice Layer Cakes—83c per half; \$1.65 Each

THERE'S A RED TRAY SPECIAL EVERY DAY

THURSDAY: Cinnamon Buns 88c Dozen 69c Dozen
FRIDAY: Cherry Pies 85c Each 69c Each
SATURDAY: Walnut Filled Coffee Cakes 78c Each 63c Each
Cinnamon Twirl Coffee Cakes 78c Each 63c Each
Large Layer Cake—Chocolate Mix—Fondant Buttercream Icing, Chocolate Crunch on Sides \$1.40 Each \$1.19 Each
HOT CROSS BUNS—(Wednesday & Friday only throughout the Lenten Season) 75c Dozen

FROZEN BIRDS EYE FOODS

OCEAN PERCH, 12 oz. pkgs., 3 for \$1
COD, 12 oz. pkgs. 3 for \$1
STRAWBERRIES, 10 oz. pkgs., 4 for 89c
BIRDSEY MAIN DISH FOR TWO
Macaroni & Cheese, 15 oz. pkg., 45c
Chicken & Noodle Casserole, 13 oz. pkg. 59c
ORANGE JUICE, 12 oz. cans, 2 for 95c
BABY LIMAS, 10 oz. pkgs. 4 for 99c
Fordhook LIMAS, 10 oz. pkgs. 4/99c
BROCCOLI SPEARS, 10 oz. pkgs. 4/99c
HAWAIIAN PUNCH, 6 oz. size, 5/95c

MINUTE RICE, 23 oz. pkgs. 59c
Log Cabin 10c Off Deal
SYRUP, New 36 oz. bottle 75c
Mott's No. 300 Jar
APPLE SAUCE 6 jars 79c
SNIDER'S CATSUP, New 20 oz. bottle, 19c

Sealed Sweet FROZEN ORANGE JUICE

5 6 Oz. Cans 99^c

Top Frost FROZEN 16 oz. Pkgs.

PEAS 4 for 99^c

Real Good Pickles
SWEET GERKINS, 16 oz. jar or
SWEET DILL STICKS, 16 oz. jars, ea. 39c
Royal Treat—12 1/2 Oz. Tins
CREAMED MUSHROOMS 2 for 75c
Rolled or Flat
ANCHOVIES 3 tins 49c
Campbell's Frozen
POTATO SOUP 3 tins 55c
Pillsbury Deal Pack—See Off
ANGEL FOOD CAKE MIX, Pkg. now 45c
Premier
WHOLE KERNEL CORN 2 tins 39c
Solid White Meat
GARLIC FLAVORED TUNA 3 tins \$1.00

Hills Brothers

COFFEE

Fine-Drip—Regular

2 lbs. \$1.25



Squire's

180 WEST MAPLE AT HENRIETTA



St. Patrick's Day is TUESDAY MARCH 17TH.

OUR PARTY STORE Will Help You Stage the

Finest St. Patrick's Party of them All!

Everything you'll need is here! INVITATIONS, NAPKINS, PLACE SETTINGS, FAVORS, ETC.

BODINES

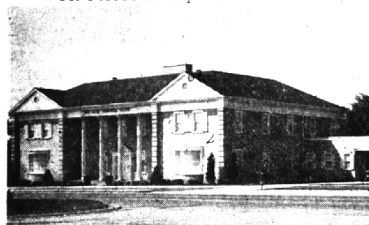
The Greeting Card Shop

172 N. WOODWARD

Next to Detroit Bank & Trust

Store Hours:
9 to 6 Daily;
Open Till 9 Fri.
& 10 to 3 Sundays
BIRMINGHAM

Specifically Designed, One of the Country's Outstanding Establishments At Prices Everyone Can Afford



Directors, William V. Vasa, Edward J. Lynch, Dan C. Flickinger, Liberty 9-0500 Established 1922

Wm. VASU Funeral Home

4375 North Woodward Between 13 & 14 Mile Roads



Attractive

ODDS and ENDS

part rolls of good carpet

NYLON beige tweed

5⁹⁵

TWIST

wool-nylon blend

7⁹⁵

Heaviest cotton PLUSH famous Wunda make

8⁹⁵

Two unusual carpets

COLONIAL STRIPE

• 100% nylon
• wool and cotton

4⁹⁵

Best

Woodward at 11 1/2 Mile

OPEN 'TIL 9 P.M.