

When more people find the wise and inspirational words and thoughts in Holy Scripture more interesting, inspiring, our world will indeed become better. However, while one is waiting for the world to get better, he can make his own individual study of this Book—and by developing his ability to apply many of its truths to his own life, he will find it a greater treasure chest than all the coin of the realm that he might put in a bank.

## Assumption Club To Have Luncheon

The American chapter of the Assumption Mothers' club, will have a luncheon served at Our Lady Queen of Martyrs auditorium, at 12:30 p.m., April 1. Tickets will be available at the door, and there will be table and door prizes.

Mrs. James P. Cummins, Jr., is chairman. Local members of her committee are Mrs. Frank McDonough, Mrs. Deland McGaffey and Mrs. Harold J. Boudreau.

**FOR ANY BOOK  
REVIEWED IN THIS SECTION**

And FOR ANY BOOK  
ADVERTISED ANYWHERE

Visit or Call

**OLD PROF'S** COMPLETE BOOK SHOP

4202 N. Woodward  
Royal Oak  
LI 9 2422

W. Lawrence  
Pontiac  
FEderal 2-6433

**WANT YOUR MONEY TO EARN  
A LARGER INCOME FOR YOU?**

Investigate the Opportunities offered by Insured Savings and Loan Associations

**CURRENT RATES**

**3 1/2% to 4%**

Used widely for Personal Savings Accounts and by institutions, corporations, credit unions, pension trusts, labor unions, religious and fraternal organizations, cooperative building funds, endowment funds, etc. Also legal for trust funds in New York and most other states.

As members of the New York Stock Exchange, and with over twenty years experience assisting thousands of investors to select and place funds in Savings & Loan Associations, we invite you to use our facilities at no cost or obligation. Ask for Booklet N-15

**AMOTT, BAKER & CO.**  
Incorporated  
Members New York Stock Exchange • American Stock Exchange (Assoc.)  
1064 PENOBSCOT BLDG. • DETROIT 26, MICH.  
Telephone: WOODWARD 5-7620

# The Birmingham Eccentric

BIRMINGHAM, MICHIGAN

Thursday, March 26, 1959

SECTION  
B

## BOOKS and REVIEWS

### Unarmed In Paradise

By Ellen Marsh. 307 pp. New York. MacMillan. \$4.50.

Reviewed by  
SALLY PARSONS

Much contemporary fiction seems to portray an existentialist-type world where disillusioned, hopeless people wander about trying to uncover the essence of their being while relegating to a secondary position such things as moral conduct, social mores and rational systems of any sort.

It is in such a world that Ellen Marsh's lovers meet on a spring night in Paris, 1950. The girl is Carmian Wills, a 25-year-old American writer—sensitive, lonely and desperately hungry for the affection she has been denied as the childhood victim of a broken home.

The boy is an expatriate Russian, Dima de Koolyankov. He is the son of a white Russian—his father was a baron—and has been successively a ballet dancer, laboratory assistant, antique dealer, horse trainer, fisherman and stage designer. In Dima there was the proletarian and snob, the skilled baron and the Paris urchin, and the artist hungry for fulfillment.

A GLANCE, a drink and a touch is all it takes for a love affair, that is to last two happy yet tormenting years, to blossom forth.

**SCREENS AND STORM SASH  
FLUSH DOORS**  
• Combination Doors and Windows  
• Cupboard Doors and Drawers  
• Plywood—Kiln Dried Lumber  
1184 Grant MI 4-9124  
WOODCRAFT CO.

Dima is child-like; he loves Carmian but is capable of beating her up.

They live in poverty, moving from one dreary hotel room to another. He breaks his ankle and is unable to work so they move in with his half-crazy mother who lives in a garbly apartment. Their life is a rat's nest. Carmian has a miscarriage. Dima can never afford the divorce from his wife that he has promised.

Whenever they have money they drink it away—alone or with the artists, fly-by-night writers and assorted queer people who form their "social circle." Their life is pointless, lacking everything except the passion and intermittent moments of gentleness that keep them together.

ELLEN MARSH writes in an agreeably, concise yet poetically lilting manner. In her third novel she has created a love story that is honest, painful and impassioned. But it is not heroic. Specifically, her technique is masterful but her theme is disturbing.

It is impossible—for this reviewer, at any rate—to respect or find interest in characters that are so weak as to fritter away money and time and, worse yet, have no underlying responsibility for their lives.

Like the existentialists, Miss Marsh seems to believe that it is advantageous to abolish rational systems and moral codes in order to retain one's free will and human personality. But when put into practice, this current philosophy often results in a situation where people do nothing that is sociologically normal for fear of losing their individuality. Thus, instead of becoming strong through actions of free will they ironically

become dull, aimless people of completely unheroic proportions.

A WORLD swarming with irresponsible persons is something to be guarded against. For even if life is lacking in everything but love, this, above all, can excite responsibility. It might be hoped that the flyleaf is wrong, then, in labeling this "a story for our times."

### Sigmund Freud's Mission

By Erich Fromm. 120 pp. New York. Harper Brothers. \$3.00.

Reviewed by  
HERB FISHER

While acknowledging his debt and the debt of all psychoanalysts to Freud, Erich Fromm at the same time has expressed the most outspoken criticism of the Viennese master. Fromm's earlier books, including "Escape from Freedom," "Man for Himself" and "The Art of Love" have challenged the physiological materialism at the base of Freud's thinking.

These books have sought to evoke an image of man, not as slavishly bound to his libidinal tensions, not as working out his existence on the treadmill of sublimating passion to reason, but as a social animal seeking mature adjustment and genuine expression of his God-given human faculties within the pressures of modern civilization.

In this book, "Sigmund Freud's Mission," Fromm culminates his critique by scrutinizing the forces which molded Freud's own thinking, which imbued him with the genius, the courage and the implacability characteristic of his thought and the psychoanalytic movement he founded.

THIS IS a kind of psychoanalysis of the master himself, developed from Freud's letters and writings, and from the reports of others close to him (particularly from the biography by Ernest Jones).

Fromm demonstrates how Freud's childhood dependency on the gratification of a possessive mother and the indifference to a weak father conditioned his life and work.

Given a powerful innate intelligence and this particular parental relationship, Freud's thinking can be readily explained—his view of women as second-class citizens; his authoritarianism which would not tolerate contradiction; his need for adulation; his need to characterize a scientific movement with all the earmarks of a political rebellion or a messianic religious mission; his self-confidence and courage which resisted the violent reactions of the Victorian age; his scientific objectivity and prodigious capacity for probing after the ultimate facts; and his physiological materialism with its foundation in the early parent-child oedipal relationship.

This is an important book, fresh in its perspective and incisive in its approach. It offers a sound understanding of the cult of Freud.

#### LEGAL NOTICE

Clarence Blumman, Atty., 207 Walsh Bldg., Birmingham

STATE OF MICHIGAN — The Probate Court for the County of Wayne.

In the Matter of the Estate of FRANK L. HILL, Deceased.

At a session of said court, held at the Probate Court in the City of Pontiac, in said County, on the 2nd day of March, A. D. 1959.

Present: Honorable Arthur E. Moore, Judge of Probate.

Under appointing time for hearing claims.

Notice is hereby given and it is hereby ordered that the time and place for hearing on claims against the above estate shall be the 1st day of June 1959, at nine o'clock in the forenoon at the Probate Court in the City of Pontiac, in said County, Michigan.

All creditors or claimants against the above estate are further notified and ordered to present their claims at said hearing and prior to said hearing to file written claim thereon, with the Court and with the fiduciary of this estate, under oath, containing sufficient detail reasonably to inform the fiduciary of the nature and amount of the claim.

It is further Ordered that notice be given to all interested parties as follows by the records in this cause by delivering a copy of this order to each of them personally, or by mailing such copy to each of them by registered mail with return receipt demanded addressed to their respective last known addresses as shown by the files and records in this cause.

And it is further Ordered that public notice thereof be given by publication of a copy of this order once each week for three successive weeks previous to said day of hearing in the Birmingham Eccentric, a newspaper printed and circulated in said county.

ARTHUR E. MOORE, Judge of Probate.

O'Connor

READING CLINIC

For Children Who Have These Problems

R—Reading disabilities

M—Motor coordination

E—Emotional disturbances

D—Developmental

I—Involuntary speech

A—Adjustment difficulties

Katherine O'Connor, M. Ed., Director  
1028 E. Main, 5th Floor Bldg.  
MI-7-0777

## Boards Approved For the April City Election

Birmingham city commission has approved these boards for the April 6 annual city election:

**Precinct One—Chastetown Fire Station:** Louise B. Baden, chairman; Helen I. Jones, Betty L. Frost, Margaret Stanley, Fortia E. Stockwell, Ruth M. Grant, Mildred R. Smith, Dorothy B. Burdett, and Charlotte K. Cannon.

**Precinct Two—Holy Name School:** Pearl C. Hollister, chairman; William P. Grambau, Kate W. Kelley, Kathleen M. Hindley, Helen A. Bouchard, Helen P. Bryant and Earlene J. Fleischmann.

**Precinct Three—Congregational Church:** Florence L. Hilton, chairman; Orla M. Hascall, Martha Irene-Wilson, Annette W. App, Vivian J. Pavlovich, Lenore B. Quinn and Gladys L. Finneren.

**Precinct Four—Municipal Building:** Aggie M. Deer, chairman; Mabel Berger, Ann F. Wetlaufer and Elizabeth J. Meisner.

**Precinct Five—Barnum School:** Elizabeth C. Blennan, chairman; Bernice L. Burnett, Mildred G. McCormick, Peggy H. Clark and Elizabeth A. Funke.

**Precinct Six—Adams Fire Station:** Isabel F. Steelman, chairman; Louise Fowler, Ruth A. Minting, Florence Roberts, Betty W. Ryan, Marie Deyo, Wanda Drumm and Evelyn H. Appell.

**Precinct Seven—Grand Trunk Station:** Louise F. Cobb, chairman; Marjorie Estes, Frances M. Leet, Nelda P. Hardin, Beatrice F.

**Precinct Eight—High School:** Mary H. Plumstead, chairman; Ellen I. Glowack, Helen T. Bond, Agnes T. Puls, Dorothy B. Ward, Elizabeth Elliott, Sara F. Johnson, Emily F. Brady and Lorraine Lilly.

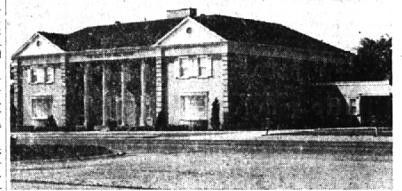
**Precinct Nine—Pierce School:** Oliver Hengesser, chairman; Marie I. Matice, Marie R. Mahler, Mary M. McIntosh, Roma M. Gray, Louise H. Brant, Frances C. LeMoine and Dorothy E. Porritt.

**Precinct Ten—YMCA:** Elsie M. Eckerson, chairman; Grace Blackley, Ruth Mae Peck, Elmira J. Mackay, Helen Heikkinen, Jean E. McKinney, Mary Anne Thurber and Vera M. Sweeney.

**Precinct Eleven—Terry School:** Mayme L. Holmquist, chairman; Roxanne Lambie, Maile Ansauna, Agnes O'Connor and Lorraine Perry.

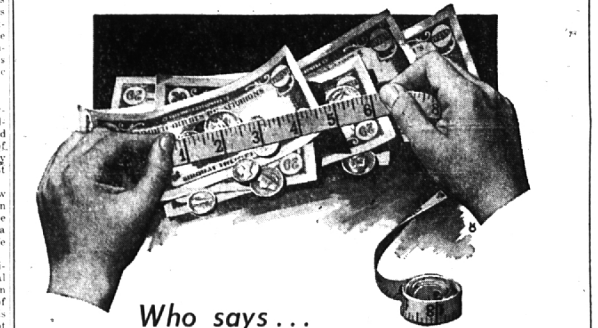
**Precinct Twelve—Adams School:** John C. Alberts, chairman; Helen Gurley, Mary E. Hill, Elizabeth N. Brown and Evelyn Izzo.

Specifically Designed, One of the Country's Outstanding Establishments At Prices Everyone Can Afford



Directors, William V. Vasu, Edward J. Lynch, Dan C. Flickinger  
Liberty 9-0500 Established 1922

**Wm. Vasu Funeral Home**  
4375 North Woodward Between 13 & 14 Mile Roads



Who says...

## "Things Don't Grow in the Winter!"

We have hundreds of savings accounts that are being tended by thrifty customers. They're getting larger all the time and provide a year round harvest, whenever it is needed

If you haven't planted a savings seedling yet, come in today and let us help you get started with your financial crop.

We will protect it and keep a record of its growth for you. How much your savings grow depends on you. Make regular weekly or payday savings to keep your currency crop bountiful.

Where you save does make a difference

**3%**  
CURRENT RATE



**Birmingham FEDERAL SAVINGS**  
INSURED SAVINGS  
99 West Maple Corner of Pierce 3055 W. 12 Mile Rd. Sunday  
PHONE MI 4-1711

## The wider the track... the steadier the stance... the better the ride!

YOU GET THE SOLID QUALITY OF BODY BY PONTIAC.

Slide in behind the controls of this gorgeous automobile, pull away and feel what happens—or doesn't happen—at the first curve or corner. Less lean. Less sway. Wide-Track Wheel design is the reason. No other car, only Pontiac, has it. The wheels are five inches farther apart. This widens the stance but not the car. You're steadier, balanced, more secure. Narrow track cars can't match it. This is a big year for Pontiac—with many more to come. It can be your big year, too. Get a bright new Wide-Track Pontiac from a dealer and take it out for a drive today.



THE ONLY CAR WITH WIDE-TRACK WHEELS

Dotted lines show conventional wheel positions. Pontiac's wheels are five inches farther apart. That widens the stance, not the car. Pontiac hugs tighter on curves and corners. Sway and lean are considerably reduced, ride is smoother, balanced, steadier.

WIDE-TRACK **PONTIAC!** AMERICAS NUMBER 1 ROAD CAR

SEE YOUR LOCAL AUTHORIZED PONTIAC DEALER

**WILSON PONTIAC-CADILLAC, INC.**  
1350 N. WOODWARD AVE., BIRMINGHAM