

## Bond Vote

(Continued from Page 1-A)  
sioning underlying the sewage disposal litigation, local charter provisions requiring public votes on general obligation library bond issues, do not necessarily apply. Baldwin explained.

BALDWIN PUBLIC library officials want the addition to be constructed as soon as possible. Library facilities admittedly have been cramped for several years. The addition would serve Bir-

mingham ultimate needs, the library has emphasized.

The one-story addition would go on the east side of the present building, and include work space and boys' and girls' reading rooms. The present library would be revamped for adult use.

Commissioners have set aside \$75,000 from municipal capital improvement funds. The additional \$76,800 must be obtained through other means, they say.

It is possible the entire \$151,800 would be financed by a bond issue.

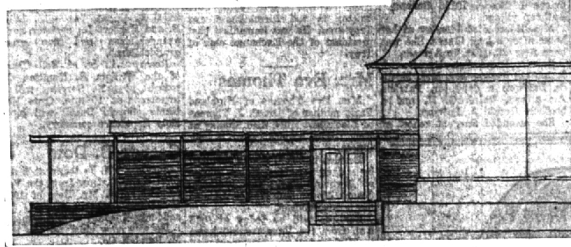
## Kass Gives More Background on Library Expansion

In what he said is a "clarification" of a story on the proposed public library expansion published in last week's issue, Library Board President Charles B. Kass made the following statement Monday in a letter to *The Birmingham Eccentric*:

In last week's *Eccentric*, the front-page article on our public library dealt with a complex situation. Inasmuch as it was not pos-

## Contemporary One-Story Addition to Library

A proposed one-story addition to Birmingham's public library would look like this, according to the architect's sketch. It would be built onto the east side of the library, and contain the library's main entrance. The present library main entrance would be closed and moved east on Martin into the addition, which would not match, but harmonize with the present building. Walls would be brick, with windows along the top.



ible to cover the problem in detail, may I present the following clarification:

Birmingham's Baldwin public library is 32 years old. During its life, population of the city has increased almost four-fold. Also during its life, all other municipal operations have been expanded to serve the needs of this larger population.

For example, the municipal building has been revamped and expanded in staff, we have two fire stations, a larger police force, larger public works facilities, a splendid recreation program. This is entirely as it should be in an expanding, prosperous and peaceful community.

SEVERAL YEARS ago, because of steadily increased usage, the library was pressed beyond its capacity to render efficient service to its patrons. The situation became critical.

Last June, after several special meetings and in recognition of this serious problem, the city commission gave the library board permission to proceed with plans for expansion. Such permission was accompanied by a grant of \$10,000 for consultant and architect fees. Later, the commission determined that an additional \$72,000 would be the largest amount available from reserves for library expansion. It was well known that this amount would be inadequate to complete the entire program.

AT COST of \$15 per square foot of minimum-type construction (it is far too costly to duplicate the architectural style of the present building), \$72,000 would barely pay for the required 5,000 square feet, let alone pay for equipment and necessary tying-in of the old building.

This was particularly recognized by two members of the commission, one of whom is an engineer, the other an architect. Further, the entire commission was especially appreciative of this situation because of their own recent experience in remodeling the municipal building.

After careful and lengthy study with consultants and architects, the library board approved plans for expansion which represented maximum utility at minimum expense. In special meeting on February 27, 1959, the library board presented these plans and estimated costs to the city commission.

THE *ECCENTRIC* reported that the commissioners were "stunned" by the estimated cost of \$151,800. Actually, I do not believe this was their reaction. To be stunned suggests that they had

forgotten their past experience and background.

Also, had they so reacted, they would have raised many questions concerning details of the total cost. As it was, because of their familiarity with the problem and in light of the detailed presentation, the commission accepted the plans and cost estimates in entirety.

They agreed with the complete necessity of the proposal. The only question dealt with the source of the required additional \$76,800 to execute the plans.

OF COURSE, the expansion will cost money. So did our two fire stations. So did the revamping of our municipal building. So do our schools. So does an extra room on the house. Any improvement costs money.

The only questions are—*is it needed and is the money to be spent wisely.* The library board and the city commissioners have answered yes to each of these. The need has long been painfully apparent.

The wisdom with which the money is to be spent has been verified by the commission's approval and by the opinion of all others who have been associated with the project.

For anyone who has doubt, the architectural plans and estimated costs are available for examination and question. This information is most properly:

IT IS TOO LATE to place a bond issue on the April 6th ballot for voter approval. A special election is costly. This all adds up to a seemingly desperate situation because the library simply cannot operate under present conditions until next year's election.

As part of examining any possible and immediate measure of needed funds, a member of the library board, at the regular commission meeting on March 2nd,

**The Birmingham Eccentric**  
Published weekly except semi-weekly for eight issues during last week in November, first five weeks in December, and last two weeks in January. Entered as Second Class Matter in the U. S. Post Office at Birmingham, Alabama, under the Act of March 3, 1879.

**SUBSCRIPTION RATES**  
(In Oakland County)  
One Year ..... \$4.00  
Six Months ..... 2.50  
Four Months ..... 1.75  
(Outside Oakland County)  
One Year ..... \$5.00  
Six Months ..... 3.00  
Four Months ..... 2.25

## Mr. Frank Ohrt

one of Detroit's outstanding hair stylists, has won every important Hair Styling Award in the country.

## NOW . . .

Mr. Ohrt is an important addition to the fine staff in our SALON. Now Pandora with Mr. Ohrt offers Northwest the

**PANDORA BEAUTY SALON**  
8904 W. 7 Mile — UN 1-0376  
at Wyoming  
BEST HAIRSTYLING AND HAIRCUTTING  
NO APPOINTMENT USUALLY NECESSARY

## B'ham Spring Arts Festival Begins June 6

The second annual Birmingham Spring Arts Festival will be held June 6-14, according to newly-elected general chairman Harvey Kroeger.

Representatives of the five major art forms have been selected to participate in the festival. Our local paper has given splendid support to all phases of the festival's operation. This has been noted and appreciated by the some 14,000 Birmingham holders of library cards.

Because last week's article did cause some confusion and concern among library supporters, I hope that this statement will be of one clarification.

- Aged Cow Manure Fertilizer
- Rich Black Dirt and Top Soil
- Medium size Fireplace Wood
- Pickup truck or dump truck load delivered

EM 3-4976  
If no answer call in evening

## HAPPY HOMER

by Janis & Stier



"Soon as you're done, dear, I'll keep my part of the bargain . . . I'll tell the contractor the supplies for our house must all come from JANIS & STIER"

call  
MI 6-5555  
**JANIS & STIER, Inc.**  
653 S. Eton, Birmingham

## Machus... Quality

Two Words Synonymous in Birmingham 25 Years

## DINNER

5 to 8 p.m. Monday thru Saturday

The Finest in Food, Service and Pleasant Atmosphere as usual.

## BREAKFAST

8:30-11:30 a.m. in the

"Apple Orchard Counter"

## LUNCHEON

11:30-5 p.m. in the

Pink Dining Room

We have Easter Candies, Favors, Baskets.

For you "Wearers of the Green" we will have specially decorated St. Patrick's Day Cakes and Cookies

8:30 a.m. - 8 p.m. Mon. - Sat.

160 W. Maple, Birmingham MI 4-1016

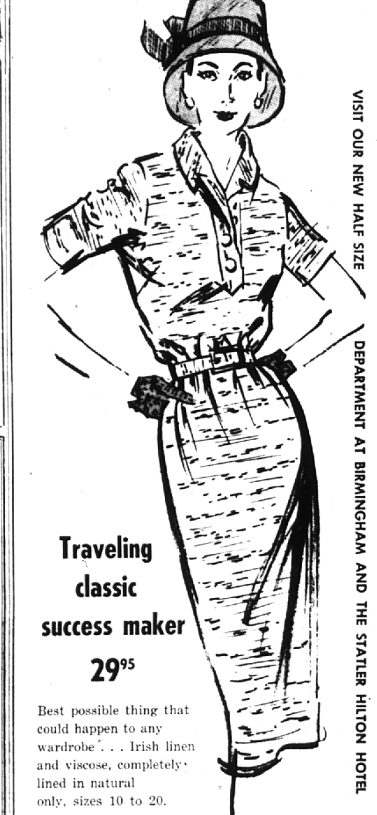
for arts, drama, music, literature, art and dance will present major productions for two consecutive days during the festival.

THE FIRST organizational meeting was held Tuesday night where Harvey Kroeger was elected general chairman. Committees representing the five major arts were also appointed at the meeting. Details for the five major events have already been started and Arts Festival officials are hoping that this year's festival is an even bigger success than last season's.

Custom  
Early American Style  
**Hi Fi Cabinets**  
And Installation  
Your  
Stromberg Carlson - DuMont  
Dealer  
**Birmingham Electronics**  
247 W. Maple MI 6-8440

## KAY COOLEY

Lobby of Statler Hilton, Detroit, 190 W. Maple, Birmingham



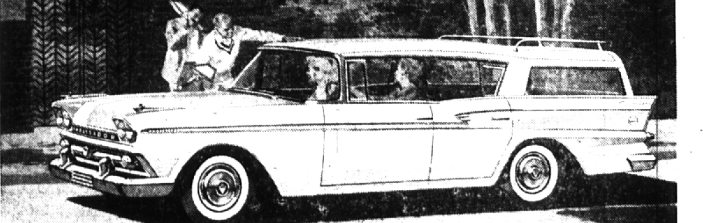
Best possible thing that could happen to any wardrobe . . . Irish linen and viscose, completely lined in natural only, sizes 10 to 20.

Purchase Entitles You to Free Parking at Rear of Store. We Stamp Ticket Sorry, NO phone, mail or C.O.D. orders.

If you think a medium price car has to be bulky and clumsy—here's the fine car to change all your ideas

## Ambassador with V-8 performance

The Compact, Luxury Car!



Take a new look at the medium price field. Compare Ambassador has changed the box score. Nothing in its field handles like the Ambassador. Nothing parks like it. Nothing goes like it—top V-8 performance with outstanding V-8 economy. No medium-price car costs less to own and drive—has higher resale value. Enjoy luxury features like individual sectional sofa front seats. Drive the Ambassador—finest car ever priced so close to the lowest.

Test Our Best—AMBASSADOR V-8 by Rambler

**Q. Which medium price car . . .**  
• is easiest to park?  
• has top power-to-weight ratio?  
• costs least to buy and operate?  
• has highest resale value?  
**A. 270 hp Ambassador V-8**

BIRMINGHAM RAMBLER, INC. 666 So. Woodward Avenue



## RELAX

in Pleetway's Matching Pajamas for HIM and HER  
...the fabric is 'self controlled'

Pleetway's "Sleep Walker" pajamas look smart, stay smart in easy care "self controlled" fabrics by Berkshire Hathaway. These smooth fabrics resist wrinkles, are truly wash and wear, perfect for smart sleepwear! Designed for relaxing, too, these cool pajamas feature contrasting Bermuda length shorts with a cinch self belt, adjustable waistband plus Pleetway's exclusive underarm pleat for sleeping comfort. Colors: Blue, Grey, Brown. Sizes for HIM A-D, for HER AAA (8-10) AA (12-14). \$5.95 pr.

## Mortimer's

MEN'S STYLE CENTER  
123 W. Maple