



Paintings by
Lititia Sheridan
Will Be Exhibited During
Birmingham Art Festival Week

at
BIRMINGHAM
PAINT, GLASS & WALLPAPER
335-337 E. Maple MI 4-3737 - MI 4-3738

"Everything for the beautification
and preservation of the home."

Drama

Page 12 June 4, 1959
Birmingham Eccentric
ARTS FESTIVAL SECTION

Children's Cinema Programs Slated by Clawson Playhouse

Feeling that there is a vital need for a children's cinema program of selected calibre pictures suitable for youngsters, the Clawson Playhouse has organized its Children's Cinema, to begin June 24.

Two special Children's Cinema programs will be presented in conjunction with the Birmingham Arts Festival.

The Playhouse at 116 W. 14 Mile road will present "Martin and Gaston," "Madeline," and six other film and cartoon shorts at 2 p.m. Saturday and Sunday, June 6 and 7.

ON JUNE 13 and 14 the 2 p.m. program will feature "The Pony," "Christopher Crummet" and several other films of special interest to children.

Admission is 50 cents for children, 75 cents for adults.

Called "Michigan's Most Unique Cinema," the Playhouse presents American and foreign film classics nightly. Free parking is available, there is a section where patrons may smoke, and coffee is served "on the house".

THE FILMS slated for the arts festival programs are planned for children aged five through 11.

They include the Cannes film festival winner, "On Closer Inspection", a Technicolor production. Also on the all-color program is "Martin and Gaston", written and drawn by children.

UPA studios, creators of characters like Gerald McBoing-Boing, are represented on the program with "Madeline."

The programs will be an hour and a half long.

THE SUMMER Children's Cinema program will begin at the Playhouse with "The Sword and the Rose" on June 24. The film, set in old England, is the story of Mary Tudor and a commoner.

Subsequent Wednesday programs for children include such classics as "Hansel and Gretel", "Gulliver's Travels," and "Heidi."

The Wednesday programs, from 2 to 4 p.m., will continue through Sept. 2. Mother-hostesses will be on hand during the programs.

Photos, Stage Set on View At Playhouse

Greeting Birmingham Arts Festival guests at a June 9 open house at the Playhouse of the Village Players of Birmingham will be members of the amateur theatrical group.

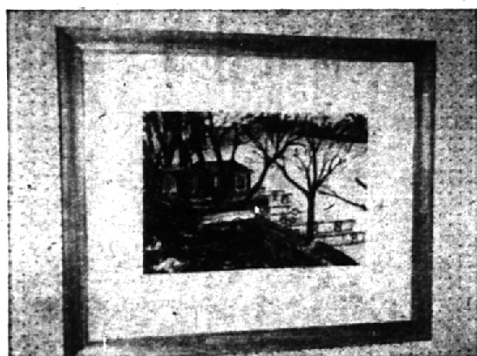
From 1 to 5 p.m. they will take guests on a tour of the theatre's backstage area. The stage setting for "A Streetcar Named Desire," designed by Mrs. G. T. Dwelley, will be on view.

Panel set up for the open house will display photographs of scenes from the 36-year-old organization's recent productions.

On hand to greet visitors will be Village Players' President Herbert F. Royal, board members Mrs. Thomas H. Adams and Mrs. William L. Martin, and Lawrence S. Martz.

The Playhouse is located at Hunter boulevard and Chestnut street, two blocks south of Maple.

Admission is free.



Paintings by
Ron Farrell
Will Be Exhibited During
Birmingham Art Festival Week
at



MI 4-1711

INSURED
SAVINGS

99 West Maple
Corner of Pierce

3055 W. 12 Mile Rd.
Berkley

Birmingham
FEDERAL SAVINGS



Paintings by
Jeanne Gardner
Will Be Exhibited During
Birmingham Art Festival Week



Fashionable Footwear
For Women

154 WEST MAPLE, BIRMINGHAM