

## Out-of-State Trips Planned By B'ham AFA

The May meeting of the Norman Lyle Squadron, Air Force Association, was featured by a special film showing of the war in the Aleutians. This film has special significance for the squadron as it was presented to the family of Norman Lyle as a permanent memorial for his contribution in the prosecution of this successful campaign in World War II.

Carl Kasek, special chairman of the Falcon Night committee, reported that incomplete tabulations indicated a moderate financial success of the film presentation of the Air Force Academy Cotton Bowl champions.

LIAISON WILL BE established with the Academy in the determination of a suitable contribution to the Air Force Academy chapel. Assistance to the squadron-sponsored Explorer scout troop has been provided in securing meeting facilities more compatible with their program and interests. Other points covered at this meeting were highlighted by planning for future programs notably proposed trips to Wright Patterson Air Force Base in July and the Air Academy the latter part of August.

Beginning Monday, June 15, regular monthly meetings will be held the third Monday of every

month. The membership continues to grow and an invitation is extended to anyone interested in the AFA program to join the group on June 25.

Michigan leads the nation in out-of-state trips. An estimated 67.5 per cent of the homes in Michigan are occupied by the owner compared with the national average of 55 per cent.

The world's largest helicopter blade manufacturing plant is located at Traverse City, Mich.



## Home Ec Queen

Lynne MacCracken, 21609 Hampton, a former resident of Lathrup Village received an award at Western Michigan university last week as the outstanding student in scholarship and leadership in the School of home economics.

## Western Jamboree June 14 to Aid Gifted Children

The 12th annual Scholarship Carnival, sponsored by parents of City and Country School of Bloomfield Hills, will be held Sunday, June 14, 1:00 to 6:00 p.m. at the school.

The carnival, which is open to the public, raises money each year for scholarships to financially assist parents who have talented, gifted children who otherwise could not afford to send their children to this gifted child school.

Theme of the carnival is "Western Jamboree." Fun for everyone in the family has been planned. An open pit barbecue will continually serve chicken and roast beef—a complete Sunday dinner.

THE WESTERN Jamboree will be held on the 11 acres of grounds at City and Country School of Bloomfield Hills. The school is located on Woodward, a half mile north of Long Lake Road in Bloomfield Hills.

Co-chairman for the carnival are Mr. and Mrs. James Ginn. The committee chairmen are: Mrs. Walter Feldmesser, Mrs. Eugene Kraft, Mrs. Avery Gordon, Mrs. Herbert Cohen, Mrs. George McGill, Mrs. Gerald Schwartz, Fred Booth, Les Traubman and H. H. Buckingham.

## Service Award Won By FFA Employee

A Birmingham man was one of 11 Federal aviation agency employees awarded employment service pins last week at a luncheon at Detroit metropolitan airport. He is Fayette Harder, Jr., 499 N. Eton, who received a 15-year service pin.

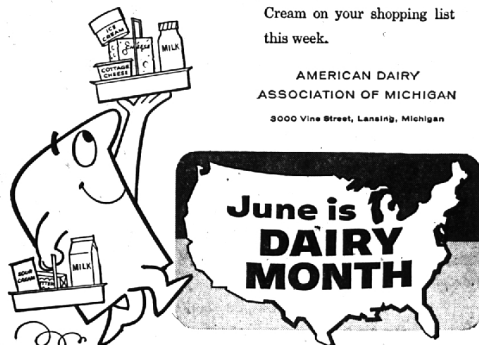
# June's Best Meal Ideas start with Dairy Foods!

June or any time's a good time to enjoy wonderful dishes made with dairy foods. They're so

delicious and healthy. Easy to serve. Put Milk and Cheese, Butter, Cottage Cheese and Ice Cream on your shopping list this week.

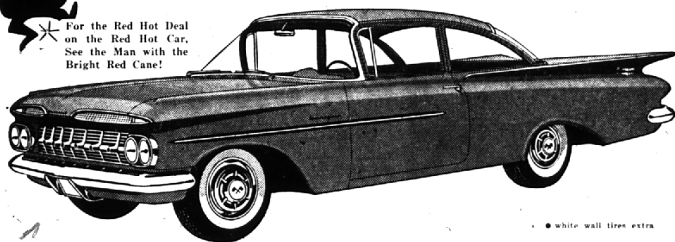
AMERICAN DAIRY ASSOCIATION OF MICHIGAN

3000 Vine Street, Lansing, Michigan



## NORTH CHEVROLET RED CANE SPECIAL

For the Red Hot Deal on the Red Hot Car, See the Man with the Bright Red Cane!



1959, 6 Passenger Chevrolet

For Only **\$1847.36**

**\$147.36 Down \$55.75 Per Mo.**

Red Cane Special! STATION WAGONS FROM \$2099<sup>02</sup>

Highest Trade-In Allowance—Our Used Car Stock is the Lowest in History. We Have Buyers Waiting for Good Birmingham Trade-Ins Now.

Drive Over Today and Get Our Deal. It's the Best in Michigan.

Red Cane Special! IMPALA SPORT COUPE \$2121<sup>78</sup>

Oakland County's Only Chevrolet Dealer With Nite Service For Your Convenience

## NORTH CHEVROLET

1000 S. Woodward — Birmingham

MI 4-2735

Open Till 9 P. M. Mon. through Fri.

TENDER, YOUNG, COMPLETELY CLEANED

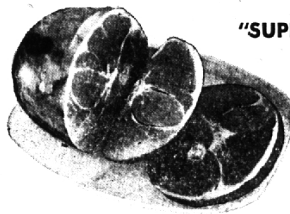
# FRESH FRYING CHICKENS

WHOLE LB.

**29¢**

Gov. Inspected Top Quality

Cut-Up Fryers . . . . . LB. 33c



"SUPER-RIGHT", SKINNED, FULLY COOKED

Semi-Boneless WHOLE OR HALF **HAMS LB. 67¢**

COMPLETELY CLEANED

FRESH WHITEFISH

LB. 53c

Medium Shrimp 5-LB. BOX 3.39 LB. 69c

PAW PAW BRAND

Grape Drink

5 32-OZ. CANS 99c

Asparagus Spears A&P BRAND ALL GREEN 2 14½-OZ. CANS 37c  
Whole Wax Beans COMSTOCK 2 16-OZ. CANS 29c  
Miracle Whip Salad Dressing QT. JAR 55c  
Lunch Bags TIDY HOME . . . . . PKG. OF 50 27c  
Keyko Margarine . . . . . 1-LB. CTNS. 55c  
Shedd's Salad Dressing . . . . . 16-OZ. JAR 33c

ANGEL SOFT, White or Colored  
Cleansing Tissues  
3 PKGS. OF 400 49c

JANE PARKER, REG. 49c

Blackberry Pie ONLY 39c

Donuts GOLDEN, SUGARED OR CINNAMON PKG. OF 12 19c  
Potato Bread JANE PARKER SPECIAL 1-LB. LOAF 15c

Lux Liquid Detergent

7c OFF LABEL 11c OFF LABEL  
22-OZ. CAN 59c 32-OZ. CAN 85c

Butter Kernel Corn . . 2 16-OZ. CANS 39c

Ivory Soap LARGE SIZE . . 2 CAKES 35c

Cheer . . 2 21-OZ. PKGS. 65c 3-LB. 3-OZ. BOX 77c

Ivory Snow GIANT PKG. 79c . . 2 12½-OZ. PKGS. 67c

Red Fluffy all . . . . 3 LB. BOX 83c

Ivory Flakes . . . . . 2 12½-OZ. PKGS. 67c

"SUPER-RIGHT" COUNTRY STYLE

Thick-Sliced Bacon 2 LB. PKG. 89c

"SUPER-RIGHT" (Center, Lb. 89c)

Canadian-Style Bacon End Place LB. 79c

"SUPER-RIGHT" QUALITY

Polish Sausage LB. 49c

Large Fresh Crisp

Head Lettuce 24 SIZE 10c

Hothouse Tomatoes . . . . . LB. 39c  
Fancy Cucumbers . . . . 2 FOR 29c  
Green Peppers . . . . . 2 FOR 29c  
Green Onions Home Grown 3 BUNCHES 29c

THE KIDDIES LOVE 'EM!

Popsicles or Fudgsicles

YOUR CHOICE 2 PKGS. OF 6 49c

Frankenmuth Cheese MILD . . . . . LB. 39c  
Risdon's Cottage Cheese . . . . . 30-OZ. PKG. 39c  
Sunnybrook Eggs LARGE SIZE GRADE "A" . . . . . DOZ. 37c  
Silverbrook Butter . . . . . 1-LB. PRINT 67c

STORE HOURS

ALL A&P SUPER MARKETS  
OPEN THURSDAY AND FRIDAY  
9 A.M. TILL 9 P.M.

CLOSED SUNDAYS AS USUAL

All prices in this ad effective thru Saturday, June 6th

THE GREAT ATLANTIC & PACIFIC TEA COMPANY  
**A&P Super Markets**  
1959 AMERICA'S DEPENDABLE FOOD MERCHANDISE