

## Nobody Wants Little Ole Schoolhouse

BLOOMFIELD HILLS—Current business of Bloomfield Hills board of education was buses to buy, money to borrow and real estate to sell. . . all transactions to be carried on by sealed bids.

The board successfully concluded buying the buses and borrowing money, but when it came time Monday night to open bids on the sale of old Pine Lake school, there just weren't any.

So the tiny building located on a half acre lot on West Long Lake road still belongs to the school district with its future undetermined.

maintenance of the buses were considered by the board in awarding the contracts.

**SUCCESSFUL BIDDERS** on the sale of buses to the school system were Verhoven Chevrolet and Stark-Hickey Ford dealers. The board will pay Verhoven \$45,077 for 8 buses, Stark-Hickey \$39,285 for 7 buses.

All buses are 60 passenger with "Carsoner" bodies. Facilities for

### S'held Man to Head Disabled Vet Group

**SOUTHFIELD**—The South Oakland chapter 19, Disabled American Veterans and its auxiliary held a joint installation Sunday at the American Legion hall in Royal Oak. James J. Fardell, 30050 Everett, Southfield, was named chapter commander by Douglas McGarity of Detroit, department of Michigan senior vice-commander.

### PLEASANT RIDGE

COUNTRY LIVING—CITY CONVENIENCE, EXECUTIVE  
4 BEDROOM HOME—LARGE SHADED LOT—OWNER  
MOVING—PRICED FOR IMMEDIATE SALE.

ROBERT G. WOLF—WO 3-0210

## SPECIAL SALE

### CHIKU-RIN GALLERY

EL 6-7416

COME TO  
28126 Fairfax

3 blocks west of Greenfield,  
2 blocks south of 12 Mile.

Forced to move because of no business at the Fox and Hounds. Everything must go and right away. 20% to 25% off. \$10,000 worth of stock including sofas, tables, lamps, accessories of every type.

A GOOD SALE YOU CAN'T AFFORD TO MISS!

## DINE UNDER THE STARS . . .

VISIT OUR BEAUTIFUL NEW PATIO

Enjoy a complete dinner or just a light snack.  
Open for lunch and evenings.

FREE delivery service from Four o'clock 'til Nine o'clock—Ten o'clock on Friday and Saturday. For that backyard treat or family picnic don't miss our summer special—Chicken and freshly made potato salad cold plate.

REAL SOUTHERN FRIED CHICKEN is our specialty but in order to please everyone, we have the best steaks, chops and seafood you ever ate.

### AUNT FANNY'S

Woodward at 12½ Mile

LI 7-2611

Don't be misled by our appearance and atmosphere. We don't charge for that—we sell good food at a reasonable price.

## TO BE . . . (in town)



\$23,900

- friendly neighborhood
- close to schools, shopping, etc.
- completely modernized
- unusual kitchen with breakfast bay
- 3 bedrooms and library
- separate dining room
- full basement
- carpeting & draperies included
- terms available
- 3 car garage

## . . . OR NOT TO BE



\$26,900

- suburban California contemporary
- 3 bedrooms, bath & lav.
- jalousied porch, huge patio
- large, beautifully landscaped & protected yard
- exterior newly painted
- natural fireplace in open living room with beamed ceiling
- excellent storage
- washer, dryer & stove among the many inclusions
- 2-car attached garage

### IS THIS THE QUESTION?

whichever your choice . . . both homes drastically reduced for a quick sale.

COMPARE . . . DECIDE . . . BUY NOW!

## Benjamin & Bishop, Inc.

Realtors

259 S. Woodward, Birmingham, Mich.

MI 4-3232

JO 4-5728

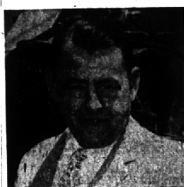
OPEN 9 to 9



## The Evergreen's Official

Mayor Harry Denyes of Birmingham took a turn with the shovel at the recent official groundbreaking ceremonies at 8 Mile road for the big Evergreen interceptor sewer project of the Oakland county DPW. Officials from participating communities were there, including (from left) Roland Kohler, North Evergreen board member from Bloomfield township; L. Richard Gare, Birmingham city manager;

Grover Serenbetz, city engineer; Denyes, Lyman J. Craig, Bloomfield Hills mayor; Elmer Kephart, Bloomfield Hills city manager; Donald L. Swanson, Southfield City mayor, and James Purkiss, Birmingham finance director. Harold K. Schone, Oakland DPW director who guides the project through the last two years of organization, is behind Gare.



### The Boss

The man who steered the enormous Evergreen and Farmington interceptor sewer projects through to the "biggest day" when work actually began June 4 is Harold K. Schone. The Oakland county DPW director was Birmingham's city manager for less than a year in 1956-7.

## 'No' Vote on Income Tax Explained by Clarkson

LANSING—Southfield Democrat S. James Clarkson, 4th district representative who voted against the piggy-back state income tax plan defeating it with his lone vote, explained this week the why behind his "no."

"First of all," Clarkson said, "I think it is important for all to know that it was a part of my campaign platform in 1956 and again in 1958 to oppose any form of income tax."

"I can think of no stronger or better criteria to judge a legislator than how he keeps his word with the people who have elected him to office."

GETTING INTO the technical aspect of the income tax plan, Clarkson said, "the next thing that bothers me about an income tax is that theoretically it is supposed to be based on this nebulous term 'ability to pay.' To speak about ability to pay in regard to quantity of money earned without regard for source, is as silly as to confuse consequence with sequence."

"LET ME GIVE a few examples—does a man who undertakes a hazardous job such as a stepladder, a bridge worker, or skyscraper, or construction worker have a greater ability to pay for taking a greater risk to his life and as a result earning more money. Or on the other hand, is it fair to say that a man who works harder and longer and thereby earns more money, has a greater ability to pay?"

CLARKSON ADDED: "If we were to adopt the income tax as adapted to the Federal income tax we adopt all of the present ramifications and evils that are now a part of the Federal income tax—a tax, I must point out, 85 percent of which falls upon those that earn \$6,000 a year or under."

"A tax which provides a 10 percent inducement for our citizens, to become informers upon their brother citizens; a tax which historically and presently benefits big business and gives special privileges to large corporations, and exemptions that the common ordinary working man will never receive."

"Without taking any greater time on a long dissertation on what I feel are the evils of an income tax, the desire for which is based primarily on the philosophy of extending the tentacles of government control to the detriment of free thinking citizens who believe that the state should never rise above the rights of an individual, suffice it to say—I vote NO. Thank you very much."



### A Stationary Portable

**SOUTHFIELD**—Mrs. Letha Palmer, senior class counselor admires the card and portable typewriter presented to her by the senior class Sunday evening. When Mrs. Palmer's oldest daughter left for college, she took along Mrs. Palmer's portable typewriter. Mrs. Palmer went out and bought another. This year her second daughter will depart for college taking the latest portable typewriter. The 1959 class, aware of this fact, presented Mrs. Palmer with a portable of her own. This time she is sure to keep it, for she has run out of daughters to send off to college.

## CONTEMPORARY MAGIC



Yours to enjoy with this fresh modern brick ranch, enhanced by a tree-studded acre lot.

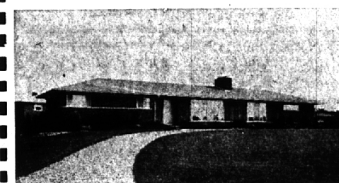
3 light and airy bedrooms, 2 full tile baths. The library can be used as a fourth bedroom.

The step-saving kitchen features dishwasher, disposal and opens to the separate dining room.

Excellent living room over 22 feet in length with a charming brick fireplace.

Two car attached carport, large utility room and ACTION PRICED AT \$26,900.

### PRETTY PICTURE!



The manicured acre yard with generous professional plantings hosts this immaculate brick ranch near Meadow Lake.

Pleasant family living throughout this fine home with 3 twin-size bedrooms, good closet area and 2½ tile baths.

Attractive family room with fireplace, large living room and garden-view separate dining room.

Complete kitchen, restful and cool summer porch and heated and tiled 2 car attached garage. PRICED TO SELL AT \$34,750.

## Your Home Column

### BLOOMFIELD HILLS

With a sweeping view of prestige homes, this 3 year old bi-level ranch has 4 twin bedrooms, plus maids quarters, 3½ baths, library, huge family kitchen plus a "square-dance" sized gathering room with 2nd kitchen, and 3 car garage. OPPORTUNITY! \$69,500.

### NATURE

paints a superb picture of this friendly farm colonial bordered by majestic trees and a winding stream. Three twin bedrooms, "leisure-hour" library, formal dining room, and bright recreation room. 2 ACRE ESTATE! \$49,500.

### WINDING STREETS

and a young friendly neighborhood set the pattern for this budget priced 3 bedroom ranch. Cheery, spacious kitchen, and 20 ft. family room for the children. FHA TERMS! \$19,500.

### NESTLED

on a landscaped Beverly Hills site among well-maintained homes. A spacious 3 bedroom brick ranch with carpeting, drapes, breeze-swept porch, att. gar. BEST BUY! \$21,900.

### STOP WISHING!

Rambling lake privilege ranch close by PINE LAKE. 3 spacious bedrooms, 2 tastefully tiled baths, full basement with paneled rec. room, "summer-fun" patio, and att. 2 car gar. DRIVE OUT TODAY! \$28,500.

### RETIRE IN STYLE!

with a "gardener's delight" yard and WING LAKE privileges for a relaxing day of fishing, this immaculate 2 bedroom brick ranch has a jalousied porch, 1½ baths, and att. 2 car gar. DON'T WAIT! \$25,500.

### SWIM!

The huge 25x45 filtered swimming pool opens off a 21 ft. family room. Add to this a spacious 4 bedroom brick ranch, 2½ baths, "modern-maid" kitchen, THE ANSWER! \$37,500.

### WONDERLAND

of lakes and rolling hills surround this long and low 3 bedrooms and family room brick ranch. Cheery and spacious kitchen, colorful tile bath plus lav., att. 2 car gar., and PRIVATE BEACH PRIVILEGES! \$26,900.

CALL  
**HALL & YOUNG INC.**  
Realtors  
West Maple at Telegraph B'ham, MI 6-2700  
Det. JO 6-7900  
Open Till 9 P.M.