

BIRMINGHAM LUMBER COMPANY

AT YOUR SERVICE WITH THE

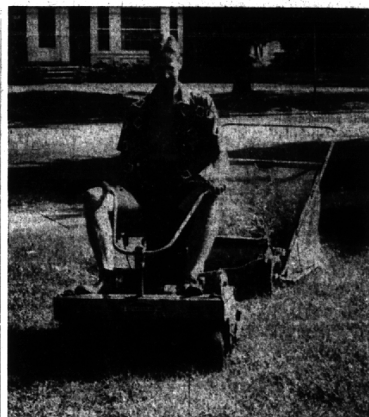
Hottest Values

IN Building Materials

MAHOGANY PLYWOOD PANELING 4 x 8 x 1/4"	TOP QUALITY KILN DRIED WHITE FIR 2 x 4 . . . 11c lin. ft.
\$5.50 Sheet	1 x 6 . . . 8c lin. ft.
LOUVERED DOORS 15 x 80	PLAY SAND 85' SACK picked up
\$7.45 ea.	READY MIX CONCRETE \$15 SX. picked up
CAFE DOORS 37 x 48	
\$11.95 pr.	
ASPHALT DRIVEWAY PATCH	
\$1.95 SX.	

SPECIALS GALORE!

1025 Haynes St. Ph. MI 4-3636



The Easy Way

The true suburbanite is no longer satisfied with just a power-mower these days. It has to be one on which he can ride while doing the lawn mowing chores. A large lawn is a lot of ground to cover twice a week and a mower that can be driven over the little blades of green makes the work twice as easy. This home-owner on the northwest corner of Rugby and Maple has found it's easier on the legs.



EDWARD F. SULLIVAN
Sullivan to Work On 'Hall of Fame'

Edward F. Sullivan, first vice president of the Detroit Aircraft Club, has been named vice president of Compass Productions, the recently organized firm that will produce next season's Hallmark Hall of Fame NBC-TV network series.

Sullivan joins the new organization after having served a year with Campbell-Ewald Co., fourteenth largest advertising agency, as account executive in charge of national advertising on the United Motors Service (GM Division) account. Previously he was with McCann-Erickson as account ex-

B'ham Marine In Maneuvers

SANTA ANA, Calif. — Marine Pfc. Peter G. Spehar, son of Mr. and Mrs. A. Spehar, 920 Hazel, Birmingham, Mich., took part in Operation "Twin Peaks" on California's southern coast with Marines from the Third Marine Aircraft Wing, El Toro Marine Corps Air Station, Santa Ana, Calif.

The two-week maneuver was the most extensive air-ground landing Southern California Coast since 1967.

ective for automotive and beverage clients.

Sullivan will live in New York city with his wife and five children.

Bloomfield CAB

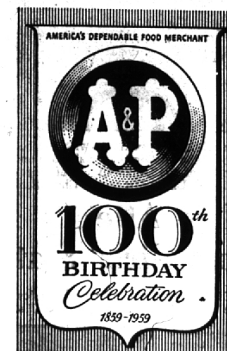
24 hour service

MI 6-7171 MA 6-2877

SHOP A&P REGULARLY AND YOU'LL GRADE US . . .

TOPS for DEPENDABILITY!

Come See . . . You'll Save at A&P!



COMPLETELY CLEANED

Fresh Fryers

WHOLE **29¢ LB.**

CUT-UP lb. 33c

Turkeys BELTSVILLE—OVEN-READY 4 TO 10-LB. SIZES . . . LB. 39c

Corned Beef "SUPER-RIGHT" POINT CUT . . . LB. 59c

Large Bologna "SUPER-RIGHT" SLICED . . . LB. 49c

Bring Home the Bacon from A&P . . . and Save!

Sliced Bacon

ALLGOOD BRAND 1-LB. PKG. **39¢**

Fancy Sliced Bacon

"SUPER-RIGHT" QUALITY 1-LB. PKG. **49¢**

Thick-Sliced Bacon

"SUPER-RIGHT" COUNTRY STYLE 2 LB. PKG. **89¢**

CALIFORNIA VINE-RIPENED

Cantaloupes

JUMBO 27-SIZE . . . 3 FOR **1.00**

Fresh Blueberries PINT BOX 39c

Pineapples MEXICAN, 15-SIZE SUGAR LOAF . . . EACH 39c

MOTT'S FINE QUALITY

Apple Sauce

3 35-OZ. JARS **1.00**

Jif Peanut Butter 12-OZ. JAR 39c

Fig Newtons NATIONAL BISCUIT . . . 16-OZ. TWIN PAK 39c

Bennett's Prune Juice 5c OFF LABEL . . . 3 1-QT. BTL. 1.00

Tidy Home Household Bags . . . PKG. OF 50 67c

DOLE SALE!

Pineapple Juice DOLE BRAND FANCY HAWAIIAN 46-OZ. CANS 29c

Fruit Cocktail DOLE BRAND 4 16-OZ. CANS 99c

Pineapple DOLE, CRUSHED OR TIDBITS . . . 3 20-OZ. CANS 79c

Sliced Pineapple DOLE BRAND 3 20-OZ. CANS 95c

Crisco Shortening . . . 3 LB. CAN 79c

Oxydol . . 2 19-OZ. PKGS. 67c . . . KING SIZE 1.35

Tide . . . 2 20-OZ. PKGS. 65c . . . 3-LB. 1 1/2-OZ. PKG. 77c

Comet Cleanser 2 14-OZ. CANS 31c

Zest Soap 2 REG. CACKS 29c

Mr. Clean . . 15-OZ. PKG. 39c . . 28-OZ. PKG. 69c

Ivory Liquid 12-OZ. CAN 39c . . 22-OZ. CAN 69c

Breeze . . 2 15-OZ. PKGS. 67c . . 38-OZ. PKG. 79c

Silver Dust 2 LARGE PKGS. 65c . . . GIANT PKG. 79c

Surf . . . 2 REG. PKGS. 69c . . . GIANT PKG. 83c

Condensed all 24-OZ. PKG. 39c 10-LB. BOX 2.24 25c OFF LABEL

Rinso Blue

2 LARGE PKGS. **65¢**

SUNNYBROOK MEDIUM SIZE

Fresh Eggs

3 DOZ. **89¢**

RED WINTER BRAND

Tomatoes

5 28-OZ. CANS **99¢**

SULTANA BRAND

Prune Plums

4 29-OZ. CANS **99¢**

JANE PARKER

Lemon or Pineapple Pies

SPECIAL THIS WEEK 8-INCH SIZE **39¢**

Spanish Bar Cake JANE PARKER MEDIUM SPICED ONLY 29c

Wisconsin Mild Cheddar, Muenster, Brick, Longhorn Cheese YOUR CHOICE 1-LB. **49¢**

STORE HOURS

ALL A&P SUPER MARKETS

OPEN THURSDAY and FRIDAY

TIL 9 P.M.

CLOSED SUNDAYS AS USUAL

All prices in this ad effective thru Sat., June 13th

THE GREAT ATLANTIC & PACIFIC TEA COMPANY

A&P Super Markets

1859 AMERICA'S DEPENDABLE FOOD MERCHANT 1159

GARDENING NEEDS

KEEP ROSES LOVELY

It's easy with ORTHO Rose Dust. Just squeeze the refillable plastic squeeze duster. There simply isn't an easier way to control so many bugs and diseases that attack roses and other flowers.



APHIS suck life from new shoots and flower buds, attract ants, can even cause fungus growth. Lindane in ORTHO Rose Dust gives excellent APHIS control.

BLACK SPOT, a fungus, can cause leaf drop if allowed to spread. Captan, ferbam and sulfur control black spot.

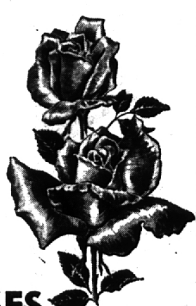
POWDERY MILDEW turns leaves, buds and stems a sickly, powdery gray. Experts recommend sulfur for this plant disease.

Also controls Thrips, certain Caterpillars, Lacebugs, Rose Weevil, Red Spider Mite, Leaf Spot and Rust. Give your Roses this quick First-aid treatment TODAY.

Since 1948

Theisen's

GARDEN MART



OUR POTTED ROSES ARE NOW BLOOMING

- ANGEL'S WING \$3.75
- ARDELLE 3.00
- AUTUMN 2.50
- BUCCANEER 3.00
- COUNTESS VANDEL 2.50
- DUQUESSA PENARANDA 2.50

and many more fine varieties to choose from

THEISEN'S GARDEN MART

HOURS DAILY 9-8 SUNDAY 9-30-6 LI 9-4422 ROYAL OAK

3826 N. WOODWARD (near 13 1/2 Mile)