

Michigan's Population Is Rapidly Increasing

"Michigan can expect a minimum population growth of 40 percent in the next 20 years with a majority of increase developing south of a line from Bay City to Ludington, Dr. Frank W. Suggitt said in a preliminary report to the Michigan Good Roads Federation, today.

Suggitt, head of the department of resources development of Michigan State University, said the majority of this growth will likely develop in the 18 counties which now make up the "large urban area."

The counties, he said, include Wayne, Oakland, Genesee, Saginaw, Bay, Macomb, St. Clair, Monroe, Lenawee, Washtenaw, Jackson, Ingham, Calhoun, Kalamazoo, Ottawa, Kent, Muskegon and Berrien. Counties in close proximity, such as Livingston, Eaton and Shiawassee will share in the growth, he said.

"These counties are developing into industrial corridors and fortunately for the present and the future the five-year expressway construction program is designed to directly service these areas and indirectly service their recreational needs," Suggitt said.

SUGGITT REPORTED that Michigan's population is increasing more rapidly than any of its neighboring states and much more rapidly than the population of the United States as a whole. Only one other state, California, has experienced a greater rate of gain (percentage increase) he said.

Suggitt said, "Continued rapid growth predictions are based upon Michigan's proximity to the largest consumer market on the continent."

"Furthermore, Michigan's pro-

imity to the natural resources upon which heavy industry is based adds to the bright prospect of growth. The iron ore and limestone of the northern lake states area are linked with the coal fields to the south and east by the Great Lakes and St. Lawrence Seaway, which further tend to accentuate industrial concentration in the area.

"The ABUNDANT availability of fresh water for industrial processing, for human consumption, for waste removal, and for irrigation and recreation further assure Michigan's rapid growth. No other state is better situated with regard to water. This can well become the critical factor limiting industrial and population growth in many other states.

To Music Camp

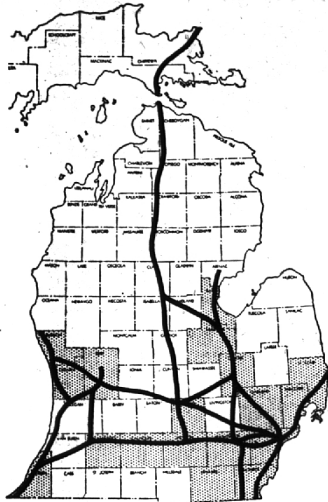
Thomas W. Cole, 32041 Lahser, Bloomfield township, has received a full scholarship for the 1959 season of the American Opera workshop, at the National Music camp, Interlochen, Mich. A tenor, Cole has appeared in opera productions under Boris Goldovsky. He is presently tenor soloist at St. Paul's Episcopal cathedral, Detroit.



The Old Timer



"Maybe the dog is called man's best friend because the wag is in his tail instead of his tongue."



The 18 large urban counties shown above (each with a population of 80,000 or more) contain 80 per cent of the state's residents and have accounted for 94.4 per cent of the state's total growth since 1950, according to Dr. Frank Suggitt, Michigan State University, in a preliminary report to the Michigan Good Roads Federation.

Suggitt reported that these 18 counties and those in close proximity, will experience a 40 per cent population growth by 1978. The expressway-type highways specified in the five-year construction program and present connecting routes, as shown, will greatly add to service these areas, he points out.

Looking for a pet for the children? See the Classified column under "Pets for Sale."

GRAND OPENING OF OUR NEWEST DAIRY SHOP

Stop 'n' Shop Now At ... BRICKLEY DAIRY

4322 N. WOODWARD (between 13½ and 14 Mile) ROYAL OAK

BRICKLEY'S COUPON*

Brickley Dairy Farm's Summer Special
BUY ONE-GET ONE AT NO EXTRA COST
 Good at any Brickley Dairy Shop or Brickley's Milk Route Salesman

BUY ½ GALLON SPECIAL FLAVOR ICE CREAM	BUY ½ GALLON GOLDEN HEALTH BUTTERMILK	BUY ½ GALLON Multi-Vitamin Mineral Fortified MILK in the amber bottle
get ½ gallon SPECIAL FLAVOR ICE CREAM AT NO EXTRA COST	get ½ Gallon Golden Health BUTTERMILK AT NO EXTRA COST	get ½ gallon AT NO EXTRA COST

OFFER EXPIRES SEPT. 15, 1959
 *Only one coupon per customer — only one item per coupon.

CALL TW 1-7373 for prompt home delivery or visit the Brickley Dairy Shop near your home

MONEY-SAVING COUPON*

Need a hand with your Home building?

SEE US ABOUT A HELPFUL HOME LOAN!

When you're planning to build your dream home, stop in and talk with one of our friendly loan counselors. We'll do our best to arrange practical, worry-free financing for you. Rent-sized monthly payments fit your budget.

Your application will receive prompt, personal attention . . . a speedy commitment. See us when you're ready to build or buy.

CAPITOL SAVINGS

27215 SOUTHFIELD, LATHRUP VILLAGE (NEAR 11-MILE) IL 6-7770

OTHER OFFICES: DETROIT, PONTIAC, LANSING

Member Federal Home Loan Bank System

JULY SPECIALS

at MOLLS House of Fabrics

SLIPCOVERS

Custom made to make your furniture the same as new. Done by old-time craftsmen at a special price.

CHAIR . . . \$1.50 Fabric . . . \$34

SOFA . . . \$1.50 Fabric . . . \$54

These prices include fabric, fasteners, cording, sales tax, labor—the complete job. More expensive fabrics priced accordingly.

UPHOLSTERING

Over 500 samples from which to choose. MOLLS are noted for the best in fabrics and workmanship. Fabric prices range from \$5 per yard and up. Prices this month are:

CHAIR . . . \$5.00 Fabric . . . \$95

SOFA . . . \$5.00 Fabric . . . \$140

These prices include all material and labor—unexcelled workmanship! These prices are good only through July 31st.

FE-4-0516 **Molls**

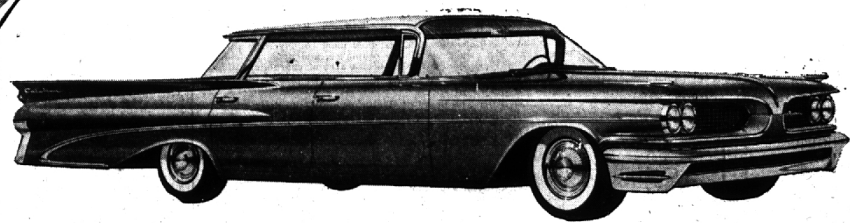
FLOOR COVERINGS
 DRAPERIES
 BEDSPREADS

1646 SOUTH TELEGRAPH South of Orchard

1/4 MILLION DOLLAR



Be one of 1400 winners this week!



We're giving away another Pontiac this week! All of us Marathon dealers are giving away a terrific grand prize every week . . . a 1959 Pontiac. It's the kind of car we would like—and we figured you would, too. So we're giving away one each week until July 26.

We're also giving away over 1400 neighborhood prizes every week! Every one of us is running our

own neighborhood SMILE-maker Sweepstakes—with a prize every week at each Marathon service station for folks who leave their names and addresses. That's why it's so easy to win one of the wonderful and valuable prizes we give away every week.

A local sweepstakes. You're not competing with folks from coast to coast, just your own neighbors!

Easy to enter! We enter everybody who says okay. Come in, write or phone—say the word and you're in the SMILE-maker Sweepstakes. Be sure to enter every week. There is nothing to buy . . . nothing to rhyme. Complete details are available at all Marathon service stations featuring the Marathon SMILE-maker Sweepstakes. Don't miss the opportunity to win each week!

LOOK AT THE PRIZES THAT ARE BEING WON AT YOUR LOCAL MARATHON SERVICE STATION

MARATHON

SMILE-maker Service is a service mark used and owned by The Ohio Oil Company

Home of SMILE-maker SERVICE—SUPER-M® and MILE-maker® gasolines

Distributed By the Clarke Oil Company; Sold at the Following Stations:

Woodward & Taunton, Birmingham, Michigan **Maple at Hunter, Birmingham, Michigan**