

BUSINESS BRIEFS

GROVECREST MANOR

CONVALESCENT HOME

- Medical Staff
- 24 Hour Personalized Nursing Care
- Medical and Surgical Cases
- A Gracious Home for the Elderly
- Dignified Living
- Excellent Food
- State Approvals
- Accessible Rates

Write or Call for Detailed Brochure

161 State Street Pontiac, Mich. Federal 56096

Stangl

... today's most wanted dinnerware... hand carved, hand decorated under the glaze.



This beautiful new Stangl dinnerware is decorated in delicate green, wine-red beauty on a soft gray background, all sealed permanently under the glaze. Hand-carved, hand-decorated, hand made by American craftsmen. Complete table settings and Starter Sets at reasonable prices. Open Stock.

Garland

16 pc., service for 4 \$14.95
45 pc., service for 8 \$52.95

For Your Bridal Registry

Come in and register your Crystal & China Patterns with us

PONTIAC POTTERY

"The Largest Specialty Store in Michigan"

2099 S. Telegraph FE 2-8642
Adjacent to north side of Miracle Mile
Open Daily and Sunday 10 to 8

Promote Fisher At M-E-L

Appointment of Herbert Fisher, 487 Arlington, Birmingham, as manager of the Mercury-Edsel-Lincoln division marketing research department was announced today by Ben D. Mills, Ford Motor company vice-president and division general manager.

Fisher, a native of Worcester, Mass., has had considerable experience in his field. He replaces E. S. Hughes, who has taken another position outside the company.

Fisher was graduated from Harvard university with an A.B. degree in social psychology and did graduate work at the University of Chicago where he received his M.A. and Ph. D. degrees in opinion and attitude research.

He joined the staff of the Leo Burnett advertising agency in Chicago and then became associated with the J. Walker Thompson company in New York as associate director of market research. In 1957,

Quinn's Shade Opens Doors

Former owners of the Trope Shop in Detroit have opened a new store at 24590 W. Ten mile near Telegraph in Southfield township known as Quinn's Shade and Drapery.

The new store will offer the latest in fabrics, awnings, woven wood and bamboo shades, shutters, table pads, glass table tops and plastic draperies.

Lillis Named V-P at Burroughs

James F. Lillis, 898 Pilgrim, Birmingham, was named vice-president and controller of the Burroughs company recently.

Lillis first joined the company in 1948 and was promoted controller in 1950.

TV SERVICE MI 6-2035
9 A.M. - 6 P.M.

- ON ALL MAKES
- TELEVISION
 - RADIO
 - AUTO RADIOS
 - RECORD PLAYERS
- WE USE RCA TUBES

Birmingham Television Co.

1842 S. Woodward, 1 blk. N. of 14 Mile Road, Birmingham
OPEN EVERY EVENING TILL 8 P.M.

Tarapata, MacMahon Move Offices

Peter Tarapata, 3351 Highmeadow, A.I.A., and Charles H. MacMahon, 3248 Woodside, both of Bloomfield township, A.I.A., announce the formation of Tarapata-MacMahon, architects with offices on the second floor of the Harbour building, formerly the old Kingsley Inn, 1591 Woodward Ave., Bloomfield Hills.

The organization will be devoted to the general practice of architecture including engineering necessary to a complete and comprehensive service. Mechanical-Electrical and civil structural engineering departments will coordinate with the architectural planning on all projects.

Projects already under contract include an addition to the Bloomfield Hills junior high school, a new elementary school for Bloomfield Hills, rehabilitation of Roosevelt high school and the Scotch school in west Bloomfield township, a new library for the city of Warren, an addition to Fuhrmann junior high school and the North school for the Warren consolidated school district.

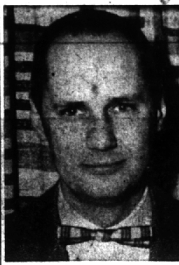
Tarapata's architectural designs have won national recognition from architectural publications and school administrators. Among them have been top awards from the School Executive magazine, Progressive Architecture magazine and the American Association of School Administrators.

Jensen Elected Into ACA Group

At a recent meeting of the board of directors of the American College of Apothecaries in New Orleans, Louisiana, Raymond Jensen, 776 Hedgecote, Birmingham, was honored by being one of 38 pharmacists elected into Fellowship in the American College of Apothecaries.

An association consisting of pharmacists whose primary function is the compounding and dispensing of drugs and prescriptions, the American College of Apothecaries imposes certain definite requirements before a pharmacist may qualify for fellowship.

He is manager of the Prescription Center, 624 N. Woodward, Birmingham.



LINN SMITH

Smith Forms Architecture, Eng'ing Firm

Linn Smith Associates, Inc., 894 S. Adams, Birmingham, is the new name of the reorganized Birmingham architecture-engineering firm known for the past three years as Smith, Tarapata, MacMahon, Inc.

This firm has been responsible for the design and construction of some thirty schools in the Detroit-Flint area, including the new \$3,800,000 Birmingham junior-senior high school presently under construction.

In addition the firm has done numerous projects for Michigan, cities of Birmingham and Highland Park and private clients. Many of these projects have won local and national awards for their excellence.

Linn Smith, A.I.A., Rivenoak, Birmingham, who founded the firm in 1954, continues as president of the corporation. Almon Durke, A.I.A., with the firm for the past two years, has been elected vice-president and director and continues his engineering functions.

James Newbold, with the firm since 1954, continues as chief draftsman and has been elected an associate. William Hewitt continues as chief field superintendent and Clifford Holforty, P.E., as chief structural engineer with the organization.

Smith was recently elected Great Lakes Regional director of the American Institute of Architects at a recent convention. He is a former president of the Michigan Society of Architects.

POTTER Moving & Storage Co.



MRS. G. H. GEE

Mrs. G. H. Gee Buys Control Of Station WCMW

The controlling interest in Radio station WCMW, Birmingham, has been purchased by Mrs. Geneva H. Gee of Birmingham.

A petition to the Federal Communications Commission will be filed to ask approval of transfer of the WCMW license, which is owned by S. L. Huffman, of Canton, to Mrs. Gee. Purchase price was \$150,000 for half the stock.

Prior to this transaction, both Huffman and Mrs. Gee owned 50 per cent of WCMW stock.

WCMW is now in its 21th year of operation, and Huffman has been president and stockholder for 11 years. Mrs. Gee and her son, Richard Schultz, have owned half of the stock for five years. Schultz is sales manager of WCMW-owned station in Peru, Indiana.

When the FCC approves the transaction, Mrs. Gee will be president of the company and Schultz will be vice-president.

From where I sit... by Joe Marsh

Slim Pickins-Up!

Copyright, 1959, United States Brewers Foundation

BIRMINGHAM INSURANCE AGENCY
INSURANCE for Every Need
114 So. Woodward
Ph. Midwest 4-2422
"AFTER WE SELL - WE SERVE"

WORK TOWARD YOUR FINANCIAL GOAL UNDER PROFESSIONAL MANAGEMENT

Whatever your financial situation, you owe it to yourself to know about mutual funds. This knowledge will help you in planning your financial future.

An investment in a mutual fund is not a get-rich-quick scheme. It is a conservative plan, under professional management, by which people of moderate means can own a piece of American business.

Why not drop in to our Birmingham office and let us help you select the mutual fund best suited to help you gain your financial goal.

CRESON BUILDING
West Maple and Cranbrook Road
Birmingham, Michigan
Midwest 6-9100 Jordan 6-1327

Watling, Lerchen & Co.
Members New York Stock Exchange
DETROIT
ANN ARBOR • JACKSON • KALAMAZOO • PONTIAC

GARAGES PORCHES - ADDITIONS
Aluminum Combination Windows and Doors
F.H.A. Terms - No Money Down
STUART E. SHELL CO.
SINCE 1947
"Here Tomorrow To Guarantee Today's Job"
959 Rockaway Rd. MI 4-3713

Medical Mirror
WHAT DOCTORS SAY ABOUT
Vaccinations for Foreign Travel

Leukemia by giving injections of bone marrow. Is such treatment effective?
A: The treatment referred to has been used in animal experiments but only a few humans have been so treated. Large doses of total body irradiation are first given to "kill off" the cancer cells. Bone marrow cells are then given to help the body recover from the irradiation. Authorities say that this method of treatment can hardly be touted as generally useful at this time. Such irradiation provides basic knowledge and may be tried experimentally in certain patients but the cure for leukemia will probably lie along different lines.

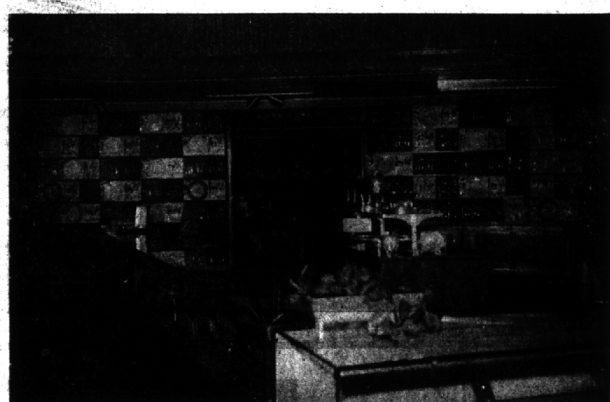
A: Prescription is your personal property and it is your right to have it filled at a pharmacy of your own choosing. When you bring it to us, you receive the finest and fastest service - and the lowest price.

Answers do not necessarily reflect the opinion of all doctors. The diagnosis and treatment of disease is the function of the patient's personal physician.

Q: I understand that doctors now have a way of treating...

WILLIAMS' PHARMACY
ALWAYS A PLACE TO PARK
1740 West Maple Ave. Phone: Midwest 4-5060

OUR TOWLE VERTICAL DISPLAY



ONE OF THE LARGEST VERTICAL DISPLAYS IN THE COUNTRY. THIS DISPLAY FEATURES TOWLE PATTERNS AND OTHER SILVERSMITHS.

These Are The Companies Whose Patterns We Stock:

- Towle
- Gorham
- Gorham
- Wallace
- Lunt
- Reed and Barton
- International
- Kirk
- Heirloom
- Tuttle
- Tuttle
- Frank Smith

LAKES' JEWELERS

"The Sterling Store of Birmingham"

WOODWARD at MAPLE MI 4-5315