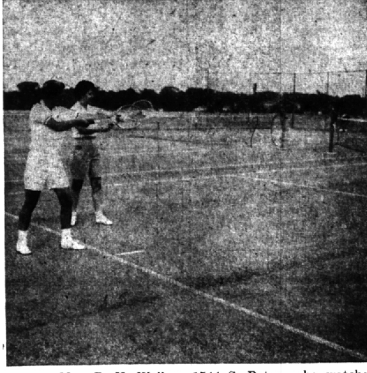


# Recreation Is Enjoyed By People of All Ages



Even a spirited game of checkers must be labeled recreation as Connie Askew, 6, of 988 Madison, (left), and Chauntelle Shearer, 7, of 375 Ferndale, discovered. All checker games must have kibitzers if it is to be an official game and Barbara Isbell, 9, of 723 Ridgedale, and Barbara Isbell, 9, of 723 Ridgedale, (far right), fills the bill. Recreation is a more active pastime for . . .



. . . Mrs. R. H. Walker, 1544 S. Bates, who watches Recreation department tennis instructor Miss Colleen Labbe, 2640 Bradway, demonstrate the proper way to serve. Tennis is one of the more popular sports in Birmingham, as is . . .



. . . learning the proper way to shoot. Greg Bonaventura, 3455 W. Breckenridge, 12, evidently learned his lessons well as he checks his score with Acting Recreation department Director Patricia Husemann. Nature provides much recreation for . . .



. . . these Birmingham area youngsters who attend the day camp held every summer at Springdale park. Instructor Chuck Wells shows these youngsters that pine cones can be used for something besides a decoration on the mantle. These pine cones were made into little dolls and Wells is showing them how to put heads on them. Then there are some youngsters who like to play . . .



. . . William Tell, complete with bow and arrow. Checking for perfect hits are Bryan Tanury, 1590 Cheltenham, and his sister, Sheron. Archery is one of the fastest growing sports in the country as is evidenced by the attendance at the daily sessions at Eton park. The Recreation department also offers many things to the teen-age group such as the . . .



. . . teen center held every evening at the YMCA. Teen-agers (top picture) dance to the record player and the teens can play bridge, ping-pong and pool. In the bottom picture, Recreation playground director Sharon Brodie (standing) teaches youngsters how to make costumes. The children, from left, are Tom Shearer, Tom Brodie, Carol Clark, Miss Brodie, and Nancy Dieter.



A summer vacation is eagerly anticipated by millions of Americans . . . and part of the real fun is in planning just where one wishes to go. Most people, vacation bound, are usually in a jovial frame of mind . . . which often results in meeting strangers and finding them (as they find you) enjoyable tourists. Lasting friendships often result, too. (Too bad joviality isn't year-round.)

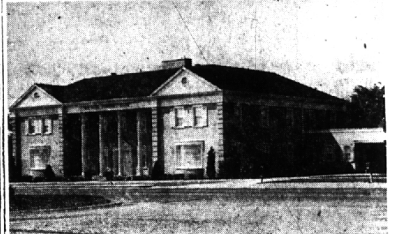
## The Birmingham Eccentric

BIRMINGHAM, MICHIGAN

SECTION B

Thursday, July 30, 1959

Specifically Designed, One of the Country's Outstanding Establishments At Prices Everyone Can Afford



Directors, William V. Vasu, Edward J. Lynch, Dan C. Flickinger  
Established 1922  
4375 North Woodward, Between 13 & 14 Mile Roads

Wm. VASU Funeral Home

### BIRMINGHAM CAMERA SHOP

168 So. Woodward  
Phone Midwest 4-0510

If You Don't Know Cameras—Know Your Dealer  
Oakland County's Choice  
22 YEAR SERVING BIRMINGHAM



### Hollywood Adjustable WALKER

Terms RENTAL & SALES  
• HOSPITAL BEDS  
• BED SIDES  
• WHEEL CHAIRS  
• WALKERS  
• CRUTCHES

### MICHIGAN FIRST AID

Invalid needs—sick room supplies  
LI 2-3027 JO 4-6811  
1621 S. Woodward, R. 2  
3 doors north of 10 Mile

## Everybody Enjoys Shopping in Federal Hardware and Supply

It's cool . . . it's comfortable . . . it's pleasant . . . Every day more folks are getting acquainted with our staff of well informed and courteous salespeople . . . they rely on their recommendations . . . here you will find all nationally advertised top brands . . . here you will find prices that reflect big savings . . . this is the store where your satisfaction is our only goal . . . so the next time you are in our neighborhood, drop in and see for yourself why thousands of customers tell us "I like to shop in Federal Hardware and Supply".

Large Selection  
INTERIOR AND  
EXTERIOR SHUTTERS  
and BI-FOLD DOORS

FIR PLYWOOD  
4x8 1/4-inch . \$3.88

Armstrong  
CEILING TILE  
12¢ sq. ft.

WHITE  
PINE  
SHELVING  
25¢  
1 x 12  
lineal ft.



EXTRUDED ALUMINUM  
BASEMENT  
COMBINATION  
WINDOWS  
Easily installed  
now only \$2.66

OPEN  
SUNDAYS  
10 A.M. to  
4 P.M.

PAINT  
PAN  
or  
ROLLER  
39¢ Each



CAULKING  
GUN  
CARTRIDGE  
3 for \$1.00

SAVE UP TO 25%  
Weather-tested  
HOUSE PAINT  
SALE PRICE \$5.95 gal.



20-GAL.  
RUBBISH  
CAN  
passes, all city  
codes  
Reg.  
\$3.95 Value  
\$1.98

NEW WONDER PAINT  
CAN'T BLISTER OR PEEL  
dries in 20 minutes  
RAIN OR SHINE  
paint with formula  
"99"  
SALE PRICE \$6.88 gal.



OPEN THURSDAY,  
FRIDAY EVENINGS TILL 9  
SOUTHFIELD RD.  
12 MILE RD.  
EL 6-7300  
KE 7-8150