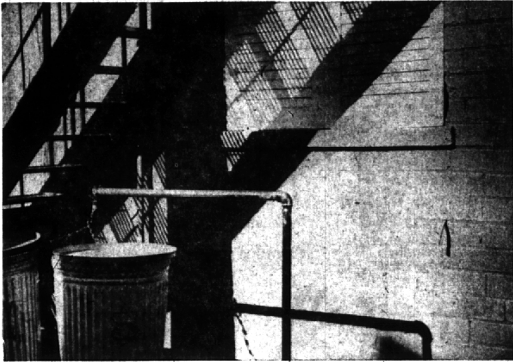
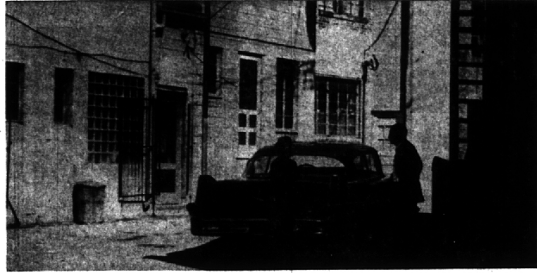


A little baby generally becomes the center of interest among most groups of people... why? There's little doubt but what, aside from the warm surface response that average folks show for the loveliness of babies, there also comes from heads and hearts a motivation that springs from the deepest wells of consciousness—which is but another synonym for life itself.



WE NOTICE, AS WE BEGIN our tour, the patterns of light and of shadow formed by the sun as it falls upon railings, poles, and stairways.



ON THE ALLEY'S SHADED SIDE, a man and woman talk. Their subject could be anything from "Where can I find a parking space?" . . . to . . . "When it's wrapped, just put the package in the car."



FIRE ESCAPES on the two-story buildings overhang the activity of the alley. Rarely used, they are a vital part of the alley scene.

## On a Sally Thru Some Alleys In Birmingham's Downtown Area



SOME PEOPLE WANT MORE to their alley than utility. Here a second-floor tenant has added some beauty by setting flower boxes along the porch railing.



SOME PEOPLE SEEM not to pay attention to sign posts. From a second floor across the alley, The Eccentric's camera spots eight infractions of the parking rules. That's undoubtedly what the motorbike officer is away checking on.

FROM DEEP IN THE SHADOWS, our camera concludes its alley trip with an observation of the occasional alley pedestrian. Like this man who passes by a station wagon, whose owner has gone back for more of his or her purchases (note car's open rear door).



"We're Bustin' Out All Over"

THANKS TO YOU  
WE'RE EXPANDING  
and  
EVERYTHING'S ON SALE!

SUCH FUN! COME SEE!  
THERE ARE BARGAINS GALORE!

**Curiosity Shoppe**

1770 S. Telegraph  
Open daily 10 to 6,  
Mon., Thurs., Fri. 'til 9

FINE HOME FURNISHIN'S & ITEMS

"We're just wild about our new CONTOUR bathtub!"

**New CONTOUR bathtub...**  
new look, new shape by American-Standard

You'll be proud to call this American-Standard bathtub your own. The contour shape provides the luxury of more room for relaxing baths and showers... wide ledges for toiletries and soap... corner seats so handy while bathing children, washing feet, cleaning the tub. Made of sturdy cast iron with long-life coating of enamel in six American-Standard colors and white.

**G. C. JOHNSTON**  
Plumbing and Heating  
PHONE MIDWEST 4-5540  
Birmingham — 1691 Big Beaver Rd.

COMPLETE MODERNIZATION SERVICE

A new idea  
FOR DECORATIVE  
FENCES

THESE REDWOOD PATIO ENCLOSURES IDEAL FOR SCREENING

SIZES AVAILABLE  
30" x 96" ..... \$7.00  
38" x 96" ..... \$8.00  
54" x 96" ..... \$9.00

READY TO ASSEMBLE

The decorative woven pattern of these attractive panels harmonizes with both modern and traditional homes to add both beauty and privacy.

**GARAGE SPECIAL!**  
Material for 16' x 20' garage, including shingles, No. 2 Fir Framing, 16" O.C. Construction, 1/2" Sliding Window, 1/2" Sliding.

**\$249.00**

CHILDREN'S PLAYHOUSE  
Pre-Cut... Ready to Assemble  
6' WIDE, 7' HIGH and 6' LONG  
Plywood Floor; Walls of Garage Sliding  
Can Be Used as a Tool House or Bathing  
FREE SET OF PLANS INCLUDED

**\$77.77** KD  
Paint Not Included

**Restrick**  
LUMBER COMPANY  
Since 1884

425 S. ETON (South of G.T.R.R. Depot), BIRMINGHAM  
FREE DELIVERY CALL MI 4-5900

ANDERSEN WINDOWS • FORMICA • ARMSTRONG CEILINGS

REYNOLDS ALUMINUM WINDOWS • DUTCH BOY PAINTS

FHA TERMS OPEN SATURDAY TILL NOON