

# BITS OF BIRMINGHAM

Do you know at what height golf courses try to keep the green stuff that grows upon them? George Moughler, 543 Frank, Birmingham, an authority on the subject reveals that "fairways are mowed to a height of a half inch, the rough at from three-quarters to one inch, and putting greens at one-eighth of an inch. This is the pattern for well operated golf clubs."

Art Lake, local jeweler, is a devoted disciple of the art of achieving piscatorial excellence. (Which in plainer language, simply means that he is fond of fishing.) Anyway, a week ago Art went to nearby Wing Lake with his spinning rod gear. Among other members of the finny tribe he netted was a 12-inch perch, which is a fair-sized length of perch. He used a small red and white daredevil spoon. "Some day I hope to get a record pike from Wing Lake . . . just to prove that a light spinning rod can bring home food for the family," enthusiastically foresees Art.

A Birmingham miss'll be guided toward the Miss Universe contest (Long Beach, Calif., July 16 to 26) when she enters the Miss Michigan finals at Walled Lake park, July 5. Susan McCombe, 20, of 647 Lakeview, however, doesn't expect to win, though she figures "the contest should be fun." A stenographer at Ford tractor and implement division, Susan is a BHS grad. She took a two-year secretarial course at Western Michigan university, Kalamazoo. She has done some fashion modeling for a Detroit department store and the Village store, and Hilda's, Birmingham women's apparel shops. Preliminary judging will be done at 4 p.m. bathing suit show. Miss Michigan and her court will be selected at 7 p.m.

Mrs. James Scribner, who teaches as puppet-making at the city's playgrounds during the summer, has run into a new problem. Since she started the courses for the Birmingham Recreation department several years ago, she has provided most of the materials herself. An unprecedented number of youngsters decided they wanted to learn the art of making little puppets this year. In just three days, Mrs. Scribner already has run out of yarn and sewing scraps and old buttons. Birmingham area women who have any of these scraps and buttons around the house are asked to drop them off at the nearest playground where they will be used when she makes her once-a-week appearance.

Birmingham Mayor Harry M. Denyes, Jr., wonders what care the county road crews are taking of state highways. "The gravel has washed off the center islands, is now about two feet into the roadway," the Mayor mentioned at Monday's city commission meeting.

Sometimes you get your tongue mixed up in your thoughts. That's what happened to Retiring Birmingham Rotary President Ed Kirbert Monday noon. To keep appointments, some club members are excused just before the program. And Ed didn't want anyone interrupting Mary Gardner Pardee's professional-quality singing. But here's what came from Ed's lips: "If you fellows have to leave, I hope you do it before Mary Pardee sings!"



Ed Kirbert, Birmingham Rotary President, is pictured here.

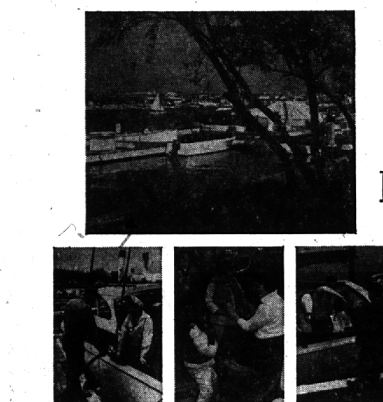
**MACOMB METAL CRAFT**

Custom Ornamental Ironwork

- Railings
- Columns
- Grills
- Cast Iron Furniture

Slocum 7-7037

See our display at "SHOWCASE" 136 Brownell St.



by Elizabeth Catlin

The "family boat" is becoming almost as familiar a sight along America's waterways this summer as is the "family car" along America's highways. Traffic is heavy. "Parking and garaging" a boat is fast becoming a major marine problem of 1959. So luxury boating centers called marinas are being rushed

## SCHOOLS OUT-

### To Extend Angle Parking Further Up N. Woodward

As a temporary expedient, angle parking will be extended the rest of the way up the east side of Woodward to Oak street, Birmingham city commissioners agreed Monday night.

This trial will last six months, and perhaps give the city time to come up with detailed plans on how to obtain permanent off-street parking for existing and planned buildings north of Ravine road.

CITY MANAGER L. R. Gare was instructed to develop plans for municipal lots in the area, with benefited businesses to pay the entire construction cost.

Brookside drive residents, across the Rouge River to the east, have been battling against use of the valley for parking. They want it maintained in as much a natural state as possible.

Commissioners initially would not agree on the means for solving the parking congestion, which is complicated by employees and patients who use the Reid building's medical offices.

COMMISSIONERS felt Woodward's width could be reduced somewhat, but opinions varied from a narrow of 40 feet to a maximum of 70 feet, its present width. The narrowing would come from construction of a double access drive in front of the buildings.

Some commissioners were reluctant even to extend the angle parking northward. Mayor Harry M. Denyes and Commissioner Carl F. Ingraham voted "no" on the motion.

Commissioner Charles Renfrew won a majority of votes with his comment that if the temporary angle parking were approved, he'd then move to instruct Gare to proceed on plans for permanent parking lots.

THIS WAS ENOUGH to swing five voted votes to his first resolution. His second motion was approved unanimously.



### Annexation

could petition both Bloomfield and Birmingham for annexation. If both boards agreed, the annexation would be done by official resolution.

If Bloomfield township refused the petition, the matter then would go to an election. A majority of votes in the COMBINED area (Birmingham and Bloomfield votes considered together) would decide the issue.

HOWEVER, IF the several houses on the south side of Northlawn are included in the petition, there will be an election. These residents will have to give a majority of "yes" votes to the annexation.

Against the COMBINED vote of Birmingham and Bloomfield township must be favorable.

### Area Families Using Private Agencies More

Private family service agencies had greater request for their facilities last year than ever before in their histories. It was reported this week by Charles A. Mentzer, executive secretary for the Birmingham-Bloomfield-Franklin Council on Community Services.

In a report to his board of directors, Mentzer said two Oakland county groups in particular reported unusually large increases—the Family Service and Catholic Social Service agencies.

MENTZER SAID 324 area families used all such family services in 1958, compared to a 1957 total of 244 families.

He wonders whether the increase was due to 1) a 118.8 per cent population increase, or 2) better understanding and acceptance of family services, or 3) increasing problems of family living.

Mentzer noted that United Community Service agencies served 2824 area families, children members of YM and YWCA, scouts, or hospital out-patients. Most service went to youth.

CHARLES B. KASS, president of the board, appointed a membership committee of Mrs. Joseph C. Dodge, chairman; Mrs. William H. Jackson; Mark H. Carter, assistant school superintendent; Mrs. Ewald E. Schaffer, executive secretary of Community House, and Reverend MacKay Taylor, pastor of Northminster Presbyterian church.

Kass appointed to the board members' handbook committee these directors: Mrs. Harvey A. Shuler, Jr., chairman; Paul N. Averill; Eugene Johnson, superintendent of Bloomfield Hills schools; Mrs. T. Hollister Mabley and Ralph Moxley, Birmingham chief of police.

## Suburbia

(Continued from Page 1-A)

experiences that sooner or later are the lot of most dwellers in the pleasant places.

THE FOOD PAGES offer easy-to-follow, kitchen-tested recipes for "Salads—Special and Satisfying."

Our regular departments, "Books, Movies, & Records," and "Cross-Country Classified" are full of useful vacation helpers that will enhance your home, your library, and your pleasure long after you return—from Vip cartoons and Mitch Miller's Folksongs to a traveling first-aid kit, a coffee travel kit, a feed-bag handbag, and many others.



"Incidentally, what happened to that foreign car that was ahead of us a ways back?"

GET SET FOR THE JULY 4<sup>th</sup> HOLIDAY WEEKEND

# Hormel's SKINLESS FRANKS 49¢ lb.

<b>FARMER PEETS</b> Semi-Boneless <b>HAMS</b> Whole or Half <b>69¢ lb.</b>	<b>MORRELL E-Z CUT</b> Ready to Eat <b>HAMS</b> Whole or Shank Half <b>69¢ lb.</b>	<b>RATH'S BLACKHAWK</b> or HORMEL'S <b>CANNED HAMS</b> 6 3/4 lbs. Each <b>\$6.49</b>
---	---	---

<b>TURKEY PARTS</b> Breasts . . . . . 99¢ lb. Thighs . . . . . 59¢ lb. Drum Sticks . . . . . 49¢ lb. Wings . . . . . 29¢ lb. Necks & Backs . . . . . 10¢ lb. Giblets . . . . . 29¢ lb.	Swift's Premium or Rath's <b>SLICED BACON 59¢ lb.</b> CORNISH <b>GAME HENS</b> 1 1/2 lbs. Average Weight <b>79¢ ea.</b>	<b>CHICKEN PARTS</b> Breasts . . . . . 69¢ lb. Legs & Thighs . . . . . 59¢ lb. Wings . . . . . 29¢ lb. Necks & Backs . . . . . 10¢ lb. Livers . . . . . 95¢ lb.
--	---	--

it's hot! serve more **FRUITS VEGETABLES**

California Size 23 **CANTALOUPE** 3 FOR \$1.00

Black **BLUEBERRIES 3 Pts. \$1.00** **RASPBERRIES 3 Pts. \$1.00** California Cherry **TOMATOES . 3 Pts. \$1.00**

<b>Smucker's Strawberry Jam 3 12 oz. Jars \$1.00</b>	<b>Salada TEA BAGS</b> 15c off Label 48 ct. Pkg. <b>52¢</b>	<b>FROZEN BIRDS EYE FOODS</b>
<b>Libby's TOMATO JUICE . . . 46 oz. Tin 25¢</b>	<b>Premier Bartlett Pears No. 2 1/2 Tins 87¢</b>	<b>Hunt's Fruit Cocktail No. 300 Tins 3 For 59¢</b>
<b>Awrey Bakery Specials</b>		
(DAILY EXCEPT TUESDAY) French Pastry Apricot Sweet Rolls . . . . . 3 for 42c (DAILY EXCEPT MONDAY) Glazed Almond Coated Donuts . . . . . 6 for 43c Almond Danish Twist Coffee Cakes . . . . . 82c Each		
(THURSDAY & FRIDAY ONLY) 8"—Special 3 Layer Cakes—Chocolate Mix, Chocolate Iced, Chocolate Crunch on sides; White Mix, Caramel Iced, Sliced Almonds on Sides . . . . . 98c Half, \$1.95 Each		
* * * * * THERE'S A RED TRAY SPECIAL EVERY DAY Reg. Price Spec. Price (WEDNESDAY) Rolled-in-Butter Coffee Cakes . . . . . 52c Each 44c Each (THURSDAY & FRIDAY) Danish Cashew Apple Filled Coffee Cakes . . . . . 82c Each 69c Each Large Layer Sake, Yellow Mix, Chocolate Iced, Cherry on top . . . \$1.40 Each \$1.19 Each		

**HELLMANN'S SALAD MAGIC**

dressing—perfect for:  
FRUIT SALADS  
COLE SLAW  
TOSSED SALADS **29¢**

Sea Glory Solid Pack White Meat **TUNA** Garlic Flavored **3 Tins \$1.00**

Mario's Stuffed Manzanilla Olives No. 16 Ice Box Jar **49c**

**Sire's**

180 WEST MAPLE AT HENRIETTA **69¢ lb. Tin**

HILLS BROS COFFEE

- Regular
- Fine
- Drip

JULY ISSUE

**Suburbia Today**

A regular monthly feature

**The Birmingham Eccentric**

JULY 9, 1959