

BUSINESS BRIEFS

Jan. 15, 1959 THE BIRMINGHAM (MICH.) ECCENTRIC 3-B

Fox Joins Eye Program

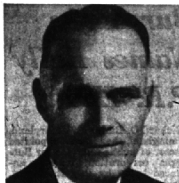
Dr. Ralph M. Fox, an ophthalmologist with offices at 648 N. Woodward, Birmingham, is one of many area eye doctors volunteering their services for the Knights Templar eye foundation.

The eye foundation helps prevent blindness and sponsors research, treatment and hospitalization of diseases of the eye. Dr. Fox will give preliminary eye examinations in connection with the program.

Duncan Hines Cites Two Area Restaurants

Greenfield's Restaurant and Carrie Lee's have received national recognition in the new edition of "Duncan Hines Adventures in Good Eating" just off the press.

They are the only restaurants in Birmingham included among the 2,500 selected restaurants "Recommended by Duncan Hines" out of a total one-third million eating places in North America.



CHRIS J. SHEARER

Name Shearer Branch Manager

Two veteran I.B.M. branch managers, Chris J. Shearer, 1056 Pilgrim, Birmingham, and Matt J. Dragich, of Royal Oak, have been named to management responsibilities in the Detroit office of Stromberg Time corporation. It was announced here today by company vice president and sales manager, Richard A. Hunter.

Stromberg, a subsidiary of General Time corp., is one of the world's largest producers of electric timing devices and electronic time control systems. The company's Detroit office is maintained at 18832 West McNichols Road.

SHEARER has served I.B.M. since 1940 as a salesman and more recently as time equipment branch manager in Detroit.

A graduate of the University of Detroit, he is active in Little League and Babe Ruth ball clubs in Birmingham and is a member of the Detroit sales executives club.

Wagner Forms New Company

Thomas H. Wagner, 654 Bennington Drive, Bloomfield Hills, has announced the formation of Optical Products, inc., 321 W. Ten Mile, Hazel Park.

The company will manufacture and sell a newly-developed water-tight case that provides for carrying, soaking and cleaning contact lenses.

CHIEF feature of the new case is the sponge lens-holders (patent pending) that wipe lenses clean as

Feature Local Pharmacist In Magazine

Pharmacist Ernie Belding, manager of the Waback pharmacy, 296 W. Maple, Birmingham, was featured on the cover of Modern Pharmacy, a trade magazine devoted to the pharmaceutical profession.

The color shot showing Belding at work was taken by Hank Weber.

Wagner, who is also president of the Rite-O-Tool & Gage co., Hazel Park, is vice president and a director of the new concern.

Hollywood Adjustable WALKER

RENTAL & SALES

- HOSPITAL BEDS
- BED SIDES
- WHEEL CHAIRS
- WALKERS
- CRUTCHES

MICHIGAN FIRST AID

Invalid needs—sick room supplies.

LI 2-3027 JO 4-6847

1621 S. Woodward, R. O.

3 doors north of 10 Mile

GRASSHOPPERS

Stronger, lighter fits one-inside the other

Re-inforced, vulcanized fibre frame. The lightest luggage made. Plaids or solid colors.

Sizes 21" to 29"

save storage space

Repairing on Leather Goods.

Zipper Repairing on all Articles.

HARRISON'S

LUGGAGE AND LEATHER GOODS

233 E. Maple, East of Woodward MI 6-8088

Also Detroit, 1217 Griswold

JANUARY BOLT-END SALE

All of our Fall Imported Woolens

REDUCED up to 20%

Custom Tailored For You

by

ELDON E. GENEROUS

147 Pierce St., Birmingham, MI 6-5234

Expert Alteration and Hand Pressing Service

All The Love That A Gift Can Hold In A Portrait By

bill williams

"The Best in Photography"

LI 2-4480

1107 Crooks Rd.

(at Main) Royal Oak

OPEN FRIDAY EVENINGS 'TIL 9

RB SHOPS

Fashion leaders for 30 years

142 W. Maple — Birmingham

Branches in Royal Oak—Ferndale—Mt. Clemens

FAMOUS-WALKER Sale SPECIAL PURCHASE

it's a big annual LINGERIE EVENT!

1/3 off

lacy nylon tricot from a famed quality maker

Manufacturer's close-out group of nylon tricot SLIPS, PETTICOATS, PANTIES. All first quality styles, in exciting fashion colors, lavishly lace-trimmed. Proportioned sizes!

\$3.99 Reg. \$5.95

\$4.99 Reg. \$6.95

don't miss these fabulous savings in our

JANUARY CLEARANCE

- WINTER DRESSES \$9.00 (Reg. \$19.98 and \$22.98)
- CASHMERE COATS \$66.00, \$88.00, \$98.00 (Reg. to \$135.00)
- COATS and SUITS \$39.00, \$49.00 (Reg. to \$55.00 and \$69.98)
- MILLINERY \$3.00, \$4.00, \$5.00 (Reg. to \$12.95)

LAST 3 DAYS... of our

Hanes

seamless stockings

save up to \$1.05 on every box

- service sheer (reg. \$1.35) \$1.15, 3 prs. \$3.30
- reinforced sheer (reg. \$1.50) \$1.25, 3 prs. \$3.60
- microfilm mesh (reg. \$1.50) \$1.25, 3 prs. \$3.60
- stretch sheer (reg. \$1.65) \$1.35, 3 prs. \$3.90
- sheer heel demi-toe (reg. \$1.65) \$1.35, 3 prs. \$3.90
- all sheer sandalfoot (reg. \$1.95) \$1.65, 3 prs. \$4.80

short, medium and long

colors: south pacific, bali rose and shell

monday, January 12 thru saturday, January 17

The standard of the world in

Magnificence

Magnificent in bearing and in stature... magnificent in luxury and elegance of appointments... magnificent in performance and ease of handling—the Cadillac for 1959 is without precedent even among Cadillacs of the past. And we are certain you will approve our opinion—once you have inspected and driven it for yourself. Your dealer invites you to do so at your first opportunity.

Cadillac

VISIT YOUR LOCAL AUTHORIZED CADILLAC DEALER

WILSON PONTIAC-CADILLAC, INC.

1350 NORTH WOODWARD AVE.