

# ADDITIONAL SPORTS

## It's the End Of An Era At B'ham High

A packed house at Royal Oak Kimball's new pool saw Birmingham Mayor reign as the champions of Eastern Michigan league swimming come to an end Friday.

This is Kimball's first year in the league and many predicted the dominant power in Eastern Michigan would be relinquished the title in 10 years.

The Mapleles had long been the dominant power in Eastern Michigan swimming circles. They had not relinquished the title in 10 years.

Since Kimball's first year in the league and many predicted the dominant power in Eastern Michigan would be relinquished the title in 10 years.

Since Kimball's first year in the league and many predicted the dominant power in Eastern Michigan would be relinquished the title in 10 years.

Since Kimball's first year in the league and many predicted the dominant power in Eastern Michigan would be relinquished the title in 10 years.

Since Kimball's first year in the league and many predicted the dominant power in Eastern Michigan would be relinquished the title in 10 years.

Since Kimball's first year in the league and many predicted the dominant power in Eastern Michigan would be relinquished the title in 10 years.

Since Kimball's first year in the league and many predicted the dominant power in Eastern Michigan would be relinquished the title in 10 years.

Since Kimball's first year in the league and many predicted the dominant power in Eastern Michigan would be relinquished the title in 10 years.

Since Kimball's first year in the league and many predicted the dominant power in Eastern Michigan would be relinquished the title in 10 years.

Since Kimball's first year in the league and many predicted the dominant power in Eastern Michigan would be relinquished the title in 10 years.

Since Kimball's first year in the league and many predicted the dominant power in Eastern Michigan would be relinquished the title in 10 years.

Since Kimball's first year in the league and many predicted the dominant power in Eastern Michigan would be relinquished the title in 10 years.

Since Kimball's first year in the league and many predicted the dominant power in Eastern Michigan would be relinquished the title in 10 years.

Since Kimball's first year in the league and many predicted the dominant power in Eastern Michigan would be relinquished the title in 10 years.

Since Kimball's first year in the league and many predicted the dominant power in Eastern Michigan would be relinquished the title in 10 years.

Since Kimball's first year in the league and many predicted the dominant power in Eastern Michigan would be relinquished the title in 10 years.

Since Kimball's first year in the league and many predicted the dominant power in Eastern Michigan would be relinquished the title in 10 years.

Since Kimball's first year in the league and many predicted the dominant power in Eastern Michigan would be relinquished the title in 10 years.

Since Kimball's first year in the league and many predicted the dominant power in Eastern Michigan would be relinquished the title in 10 years.

Since Kimball's first year in the league and many predicted the dominant power in Eastern Michigan would be relinquished the title in 10 years.

Since Kimball's first year in the league and many predicted the dominant power in Eastern Michigan would be relinquished the title in 10 years.

Since Kimball's first year in the league and many predicted the dominant power in Eastern Michigan would be relinquished the title in 10 years.

Since Kimball's first year in the league and many predicted the dominant power in Eastern Michigan would be relinquished the title in 10 years.

Since Kimball's first year in the league and many predicted the dominant power in Eastern Michigan would be relinquished the title in 10 years.

Since Kimball's first year in the league and many predicted the dominant power in Eastern Michigan would be relinquished the title in 10 years.

## Recreation Round Up

### SKI CLUB

Interested in skiing and meeting fellow skiers? The Birmingham ski club is now organizing. Meetings of the ski club are held at the Birmingham Community House on the first and third Wednesdays of each month at 8 p.m. One objective of the club is to attend trips to ski areas locally and up north.

At present, the club has a trip planned to the Walloon Hills ski area for the weekend of February 6. Also on the agenda is a trip to some of the northern area for the weekend of Feb. 21.

The name of the area will be announced at a later date.

The club is now engaged in a contest to determine an emblem to be used by its members. Drawings are being submitted in which the design judged best by the members will become the official patch of the club.

Over the weekend of Jan. 24, the club held its first northern trip. The journey was to the Oberfae ski area with 20 members participating. The ski trips are open to anyone interested in joining the club, be you a novice or an expert skier. So come one, come all, let's have a real active ski club.

### FAMILY SWIMMING

A new session of family swimming has been organized for the family to enjoy "togetherness". Monday evenings 7:30 to 10 p.m., at the Birmingham Community House for the fee of 25c for children and 75c for adults. Be sure to take advantage of this opportunity for extra swimming for the entire family. Also family swimming at the Derby pool Thursdays evenings 7 to 10 p.m., 25c for children and 75c for adults.

### MUNICIPAL RINK

The annual Ice Skating Rink Holiday will be presented Feb. 15, for the fee of 75c for adults and 25c for children. Be sure to make your plans to attend this delightful presentation by local talent and the figure skating club. Tickets are available at the recreation office and the Municipal skating rink.

### HOCKEY CLINIC

The hockey clinic will continue every Monday afternoon from 4 to 6 p.m. Marty Pavelych will not be instructing but will be an assistant to help the boys.

### MOTHER & PRE-SCHOOLERS

Every Monday and Thursday afternoon from 1 to 3 p.m. Instruction for women—come out and enjoy your self.

### SENIOR MEN'S CLUB

This group of retired men assembled in the ranch room of the Community House last Friday at 10 a.m. as usual in spite of the bad walking conditions and the slippery streets.

They enjoyed a sound movie, obtained through the efforts of C. H. Sander, of the American Bridge company and Sam Fish, chairman of the entertainment committee.

Americans can be proud of Big Mack—the Mackinac bridge. The film showed what a tremendous feat of engineering this project was and furthermore, it was completed on schedule. Next week Harry Burch, member of the entertainment committee, has arranged for Leonard J. Lamb, superintendent of State highway department, to speak about the water situation in this whole district.

Harry Framm is the moderator for the discussion group whose subject for this occasion is "Friendship".

### ADULT RECREATION

Jump on the recreation bandwagon heading straight for the adult recreation program at the Birmingham high school gym on Monday evenings, 7 to 10 p.m. For a small fee of 50c per person.

ELEMENTARY BASKETBALL

Elementary mornings at the gymnasium round Birmingham you'll hear the following cry from the participants: "Ticket, Ticket—who's shot a basket?" All boys between the ages of nine and 16 are eligible to take part at Harum, Baldwin, Birmingham, Herby, Pierce, Quanton, Torry and Adams gyms from 9:30 to 11:30 p.m. during January and February. Free of charge.

KIRK-IN-the-Hills moved into a tie for second with Franklin on a 5-2 record by defeating Presbyterian No. 1, 29-23.

In other action, St. James Episcopal trounced Presbyterian No. 2, 28-18, in a battle to see who would occupy the basement.

SKI AND TOBOGGAN AT MT. CHRISTIE

AMERICAN'S BEST AND MOST BEAUTIFUL SKI WITH LIFTS AND LIFT FACILITIES

Beautiful New Lodge with all the features of a resort.

Now is the time for planting big shade trees while the ground is frozen—because of less damage to lawns, walks and drives. Delay in the spring when the Frost Laws are posted on all residential streets. Also delay by rains leaving the ground too wet.

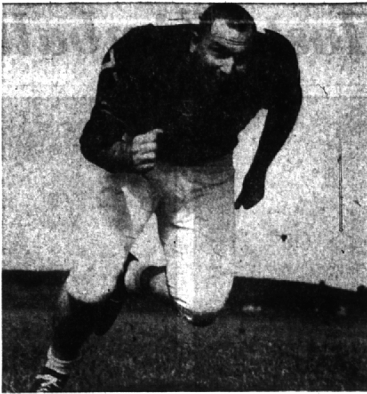
We, therefore, urge you not to wait if you are planning to have any large trees planted this year.

COME OUT AND SEE OUR TREES NOW

SUGAR MAPLE RED MAPLE

FOLKERS NURSERY COMPANY

2 LOCATIONS



"Spencer at Tackle"

While this is the style he uses while playing football, Green Bay tackle Ollie Spencer abandons the rough tactics when trying to convince a customer he needs more insurance. Spencer, who lives at 2460 Buckingham, Birmingham, builds up his insurance business when not knocking down opposing players during the football season.

## Country Day Cagers Face Busy Week End

Detroit Country Day Coach Dan Halling and his cagers are preparing for a busy weekend.

The Yellow Jackets will host Huron tomorrow and then travel to Grosse Pointe for a contest with Country Day School. Even then, their work is not finished.

Country Day will also host Harper Woods next Tuesday.

Halling is hoping for some improvement in the team's work during the three-game span since Friday's losing effort to Clintonville, 58-44.

The loss showed the Yellow Jackets in fifth place in the Central-Suburban league with a 1-2 record.

## SIDELINES

HE IS a graduate of the University of Kansas and received his degree in education.

With the exception of two years spent in Uncle Sam's army, he has since devoted his time to educating football players in "How to Stay Out of Ollie Spencer's Way."

When not playing football, he lives at 2460 Buckingham, Birmingham, and has evidently decided to stay for a while.

SPENCER is a member of the First Methodist church, the local junior chamber of commerce and the Bloomfield Lions club. His wife, Diana, teaches Sunday school at the church and their two children, Shari Ann, 1, and Steven Clark, 2, receive liberal doses of instruction.

While he doesn't look as big in street clothes as he does in uniform, Spencer still presents a formidable appearance.

While he doesn't admit to wrestling would-be customers to the floor to get that signature on the dotted line of an insurance policy, he certainly looks capable of it.

It was nice to be reassured that he "talks" customers into those policies.

## Area Bowlers In Tournament

Approximately one hundred bowlers will compete in the second annual tournament sponsored by the Detroit chapter of the national association of accountants. The event will be held Saturday, January 31, at State Fair recreation.

Birmingham area residents who will compete are T. S. Lawton, Billie L. Finley, Kempf, George R. Troost, Verne D. Hanna and E. C. Redd.

In the competition, which will start at 2 p.m., last year's singles champion, Dick Taepke, and the winning team captained by association president Tony Krauer, will be back to defend their titles.

All members of the Detroit chapter invited to participate and last minute registrations will be accepted at State Fair prior to the start of the meet.

## Mt. Christie Adds Two New Teachers

The addition of two new members to the professional teaching staff of Mt. Christie ski area were recently announced by manager Robert Jackson.

The newcomers are a husband and wife team, Walter and Margaret Hasel, former Swiss competitive skier and instructor, is one of the best known professionals in the Detroit area.

For some years before the development of Detroit area ski resorts, he conducted private classes. In recent years he has divided his time between teaching and his work as maître d'hôtel of a leading Detroit restaurant.

## Loop

(Continued from Page 8-D)

In the first period to put the Bulldogs out in front, Tony Ruzzin and Bill Babby pushed in each in the second to clinch the game.

The Birmingham Ladies' junior house league at Birmingham Bowl is so tight that only three and a half games separate the first six teams.

The Bloomfield Hills country club league at Bloomfield Lanes has six teams tied for second place in the first-place squad, Richard and Lois leads only a one and a half game edge.

The Birmingham Federal Savings, The Birmingham Excitric and Mar Coffee Shop are one-two-three in the Ladies Aught loop at Bloomfield Lanes with only one game separating each team.

Seventeen of the 18 teams in the Birmingham newcomers' league at Birmingham Bowl have names of famous drinks.

Names like Manhattan, Stingers, Martins, Screwdrivers and other drinks are adopted by all but one of the teams.

That team has adopted the title of "Teetotalers." Needless to say, the Teetotalers lead the league by three full games.

## STANDINGS

Club	W	L	T	P
Baldwins	6	1	0	12
Hurons	5	4	0	6
Yesters	5	4	0	6

Experiments reveal that to equal the modulation work output, man would have to excavate, in a single night, a 37-mile long tunnel wide enough to easily permit passage of the body.

## SALE

1/3 OFF Selected group of TOP COATS were \$60 NOW \$40

## 1/2 OFF JACKETS

MEN'S ROBES small sizes

## 20% OFF TOP COATS SUITS

For your Valentine Beautiful Ties 2.50 to 5.00

## PECK'S MEN'S WEAR

108 S. Woodward Birmingham

## Southfield Cagers Host Fifth-Ranked Berkley

Even though the fifth-ranked team in the state clobbered his squad last time they met, Southfield Coach Bob Watts is hoping for a reversal of form tomorrow night when his Jays host Berkley.

Berkley dumped the locals, 65-42, on December 19 and the Jays are hoping to square things in the second meeting.

THAT LOSS was one of two league defeats on the Jays' record. Farmington chalked up the other loss at Southfield's expense, 62-58, on January 16.

Southfield chalked up its second straight league win Friday, by edging a tough Waterford quintet, 63-61. The first time these two teams met, Southfield took a one point lead.

With the score tied, 59-59, Tom Ridley caved in two charity tosses with less than a minute to go and was fouled seconds later when he stole the ball.

## With The Bowlers

Two leagues are in the middle of a tight race with the top six teams pushing the leaders.

The Birmingham Ladies' junior house league at Birmingham Bowl is so tight that only three and a half games separate the first six teams.

The Bloomfield Hills country club league at Bloomfield Lanes has six teams tied for second place in the first-place squad, Richard and Lois leads only a one and a half game edge.

The Birmingham Federal Savings, The Birmingham Excitric and Mar Coffee Shop are one-two-three in the Ladies Aught loop at Bloomfield Lanes with only one game separating each team.

Seventeen of the 18 teams in the Birmingham newcomers' league at Birmingham Bowl have names of famous drinks.

Names like Manhattan, Stingers, Martins, Screwdrivers and other drinks are adopted by all but one of the teams.

That team has adopted the title of "Teetotalers." Needless to say, the Teetotalers lead the league by three full games.

## Title

(Continued from Page 8-D)

On Thursday, Domestic handed Favett a 25-0 loss. Carl Penracki hooked in 28 and Bob Maier 18. Shelley (16), Munstinger (14) and Bud Favett (13) hit in double figures for Favett.

STANDINGS

Club	W	L	T	P
Dahlquist	4	0	0	0
Domestic	4	0	0	0
Shelley	3	0	0	0
Tavence	0	0	0	0

## Game

(Continued from Page 8-D)

In Sunday's action, the Chiefs continued their unbeaten, untied string as they downed the Oaks, 5-3.

Bob Stephenson started the scoring in the first period for the Chiefs and Bob Gagnon and Wayne Groleau added one each in the second.

Two markers by Bill Jones in the third finished the scoring and the game for the Chiefs.

THE OAKS took an early lead on first-period goals by Bob Lyons and Dave Dostie and Lyons added another in the second, but the Oaks couldn't dent the Chiefs' defense after that.

Dahlquist continued its last-half season surge by edging Varsity Shop, 4-3.

Richard Tierman scored in the first, Dave McFay and Joe Potter in the second and Phil Clark chalked up the winner in the third.

Pete Landino scored for Varsity Shop in the second, Jerry Beck and Joe Scherer added tacks in the finale.

STANDINGS

Club	W	L	T	P
Varsity Shop	3	0	0	16
Dahlquist	2	0	0	6
Birmingham	2	0	0	6

## SPECIAL PROFESSIONAL INSTRUCTIONS

By Agnes Ekstrom  
Former W.L.B.C. Champion  
Tuesday Afternoons 1:30 to 4:30  
and Friday 10:00 A.M. to 1:00 P.M.

Syl Thiel  
Daily 10 to 5  
BLOOMFIELD LANES  
1529 N. Woodward,  
Bloomfield Hills  
MI 4-5125

SONAR—RAYTHEON—COMCO  
TWO-WAY RADIO TELEPHONE  
Business or Pleasure  
Car — Boat — Aircraft — Bose  
PLACE ORDER BEFORE SPRING RUSH  
SHA-MAR ELECTRONICS  
MI 6-7871  
Birmingham, Michigan

ATTIC INSULATION  
pays for itself!  
CHECK THESE Special Values—BUY NOW!  
THIS WEEK ONLY . . .  
Genuine ZONOLITE HOUSE FILL \$1.49 Bag  
ECONOMY FIBERGLAS BLANKET 4¢ Sq. Ft.  
1 1/2 In. Foil-Faced FIBERGLAS 5 1/2¢ Sq. Ft.  
2 In. Foil-Enclosed FIBERGLAS 8¢ Sq. Ft.

FOR YOUR REMODELING PROBLEMS:  
We will help you to do it yourself, or will recommend a qualified contractor. Call Today!  
Birmingham Lumber AND SUPPLY COMPANY, INC.  
1025 HAYNES STREET  
PHONE MI 4-3636  
Between Hunter & Adams—5 Blocks South of Maple  
Hours 7:30 to 5:00 Mon. thru Fri.; 7:30 to 1:00 Sat.  
SEE OR CALL US TODAY!

BIRMINGHAM  
U-BUILD-IT STORE  
(or we'll build it)  
SHUTTERS — FINISHED — UNFINISHED  
CABINETS — STOCK — CUSTOM  
FURNITURE — IN - PARTS  
PLYWOODS & HARDWOODS  
Adjustable Shelf & Bracket  
1489 S. WOODWARD MI 4-4490  
Next to Milks Appliances  
Open 9 to 9 Mon. thru Sat.

PLANT BIG SHADE TREES NOW  
NOW IS THE TIME FOR PLANTING BIG SHADE TREES WHILE THE GROUND IS FROZEN—because of less damage to lawns, walks and drives. Delay in the spring when the Frost Laws are posted on all residential streets. Also delay by rains leaving the ground too wet.  
We, therefore, urge you not to wait if you are planning to have any large trees planted this year.  
COME OUT AND SEE OUR TREES NOW  
SIZES FROM 3" TO 12" DIAMETER  
MORAIN LOCUST SYCAMORE  
PIN OAK CLUMP BIRCH  
Wholesale inquiries welcomed  
FOLKERS NURSERY COMPANY  
NARBURG LOT CHERRYHILL MIDDLEBELT GARDEN CITY GA. 1-1853  
2 LOCATIONS  
BIG TREE LOT MAPLE & TELEGRAPH BIRMINGHAM MI. 6-8727