

New Super Market Opens in Lathrup

LATHRUP—The first super market in Lathrup Village was opened Feb. 25 by A & P Food Stores. The grand opening of the super market at 12 Mile and Southfield is a highlight in the local observance of A & P's



Dads Reign Tonight At Lathrup Nursery

LATHRUP — Tonight is father's night at the Village Nursery School, Evergreen road and 11 Mile. Mothers are not invited, but spouses who attend the school will invite their dads to see how they work at the school.

According to Mrs. Curt Terova, chairman of the school, this is the second annual father's night. Visitors will be welcome from 6:30 to 7:30 p.m.

The school still has a few openings for pre-school age children. Arrangements can be made by calling Mrs. Terova, Mrs. Donna Wagner of Birmingham is the teacher in charge of the school.

Provocher, chairman, the final results of the Southfield Public Schools recreation survey are not yet totaled, but the Lathrup survey shows an interest in arts, archery, basketball, dancing lessons, golf and tennis, dramatics, and softball, golf instructions, horseback riding, swimming, tennis, winter sports and a community recreation center.

When the survey is complete, the results will be made available to the city governments of Lathrup and Southfield and to the public schools.

Bruce Sheffer, advisor to a group of Junior Achievers sponsored by the General Electric Metallurgical Products Department, brought a few members of his group out to talk with Lathrup residents this week.

Talking with experienced salesmen, the J.A.s learned how to present their product, a little sharper. Picking up sales experience, the J.A.s even sold a few of their products.

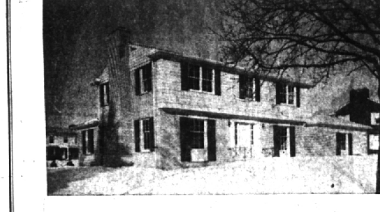
Spoken at the March 2 meeting of the Lathrup Woman's Club honoring Girl Scout leaders, will be Dr. Phelma G. James. Her topic will be "Salute We Inherited."

Dr. James is a professor in the College of Liberal Arts at Wayne State university. She is a former president of the Michigan and American Folklore Societies, a former president of the Board of International Institute of Metropolitan Detroit, and past vice president of Women's City Club.

Tea following the meeting will be poured by Girl Scout leaders, Mrs. W. J. Owen and Mrs. C. J. Mrs. Willard Robertson.

According to Mrs. William F.

BLOOMFIELD VILLAGE . . .



Best buy in Bloomfield Village. 4 twin-sized Bedrooms, 2 full Baths—2 extra lavatories. Lovely sunny Living Room, separate Dining Room, paneled Family Room, cheery Kitchen with GE built-in Oven and Range, and Breakfast nook. Under the 2 feet of snow is a beautifully landscaped 100 ft. lot. Built by Leading builder T. W. Hay, you can move right in.

SEEING IS BELIEVING! MAY WE SHOW IT TO YOU?

BIRMINGHAM'S SENIOR REALTORS
MAX BROOK INC.
300 S. Woodward MI 4-6700

Workers

(Continued from Page 1-E)

and operating expense to run the new facilities required about \$300,000 more in school operating costs. Independent state studies show that the district's student population will increase between 300 to 350 students each year for the next 10 years. More teachers and additional necessary facilities will increase school operating expenses by about \$125,000 each succeeding year.

"The 4.6 mill increase will provide the necessary funds to meet these added operating expenses, and also pay for the current deficit."

"The millage proposal on the ballot calls for an increase of 4.6 mills above the present millage, bringing the total to 22.29 mills. This is lower than the rate presently paid by residents of Oak Park Farmington, Birmingham and many other neighboring communities. The 4.6 increase is for the years 1959 to 1961, inclusive. It will then drop to 3.6 mills for three years, 1962 to 1964, inclusive. It will then be terminated."

"The bond proposal calls for \$750,000 to build an addition to the junior high school building and a new one-unit elementary school building on the Quarton road site. The present bond proposal is \$375,000 less than called for in the proposal that was defeated in the last election. This is not because there is any reduction in the need of facilities, but because state law requires that in order to hold a new bond issue election within six months of a previous election, the bond request cannot be the same."

"ANYWAY, this beautiful big rocket ship needed help from a garage, not because it was stuck in the snow, but because something went wrong with the generator."

"The sight of this helpless marvel of American production so unnerved the truck driver that he climbed out of the cab, put his hands on his hips, and said, 'My, my!'"

"YOU SAY you're tired of crawling on the ice and you want to stand on your own two feet? Well, cheer up! The big thaw must be coming. Because Beverly school Principal Max Ferguson called the other day to say that crocuses, tulips, and hyacinths are popping their pretty little tops through the ground in the school courts."

"I misunderstood what an informant told me over the phone recently about a new Lathrup Lions club member. Consequently, I wrote that Dr. Louis J. Manly was a dentist."

"This is an open letter to his patients; you can go back now. He's really a physician and surgeon, not a dentist."

Entertains West

BLOOMFIELD WEST — On behalf of the Birmingham Community House Fund Drive, Mrs. Robert W. Hackett, 410 Wooddale, assisted by Mrs. Edwin G. Olson, 713 Wooddale, entertained a large group of their co-workers Feb. 25.

Beck, hostess is Mrs. Walter P. Buchanan, Jr.

CRANBROOK — Dr. and Mrs. John Bryan of Rock Creek drive were hosts to the annual meeting of the Cranbrook Village association No. 2 last Tuesday.

New association officers for the forthcoming year will be Lloyd A. Gabler, president; John Bryan, treasurer; and Howard Bauer, secretary. The board of directors will consist of Gabler, Bryan, Bauer plus Rodney Lockwood and Bill Henry.

Hostesses assisting Mrs. Bryan were Mrs. Stanley Craft, Mrs. Michael O'Sarago, Mrs. Fred Rusche, Mrs. Lillian Sabadi, and Mrs. Willard Robertson.

Registrations Reach 3,003 In Westwood

"IT IS not a 'blackjack' but a simple fact that if the millage proposal is not approved, the board of education will be forced to cut operating expenses by approximately \$300,000 to balance expenses with current income."

"This inevitably would mean reduction of the teaching staff. If substitute teachers could be used when regular teachers are ill, teachers who leave could not be replaced, special teachers would be eliminated and no teachers added as enrollment increases. The number of pupils per class might be increased beyond most effective instruction size."

"This service would have to be picked up only on main trunk roads. Special fees may have to be levied for supplies used in various classes, at a cost of \$10 to \$15 per child. Maintenance costs on the building and grounds would be reduced. Kindergarten would be eliminated. Kindergarten would be eliminated and no teachers added as enrollment increases. The number of pupils per class might be increased beyond most effective instruction size."

"These ARE the realities we face. They are not inventions."

"In our program of house-to-house canvassing, we have made every effort to present the true facts concerning the need for this election. We request residents to contact a member of the 400-man committee if any last-minute attempts are made to present what we would like to prove are false statements."

Northwestern X-Way Gets S'field OK

SOUTHFIELD — The Southfield council Monday night approved preliminary plans for the Northwestern expressway section between Philip street and Lusher road, a two-mile stretch. The state highway department can now go ahead with condemnation preliminary to construction.

The expressway's completion is set for 1961. It will run from the proposed James Couzens expressway in Detroit, from Eight mile to the Northwestern-Telegraph intersection.

"There are no frills in our local educational facilities and none are proposed. There are no swimming pools, elaborate auditoriums and other similar special features which many consider desirable. Facility planning is directed at safe, well-planned, academic classrooms for 30 to 32 students each, plus normal service facilities. It is interesting to note that the junior high school has received several design awards, none for expensive architecture but for simplicity and serviceability as an educational center."

Alterations and Remodeling

All work planned and designed carefully, built correctly and completed speedily.
WEBSTER BUELL
4126 N. Woodward, Royal Oak
Liberty 9-4100

Registrations Reach 3,003 In Westwood

"This inevitably would mean reduction of the teaching staff. If substitute teachers could be used when regular teachers are ill, teachers who leave could not be replaced, special teachers would be eliminated and no teachers added as enrollment increases. The number of pupils per class might be increased beyond most effective instruction size."

"These ARE the realities we face. They are not inventions."

"In our program of house-to-house canvassing, we have made every effort to present the true facts concerning the need for this election. We request residents to contact a member of the 400-man committee if any last-minute attempts are made to present what we would like to prove are false statements."

Northwestern X-Way Gets S'field OK

SOUTHFIELD — The Southfield council Monday night approved preliminary plans for the Northwestern expressway section between Philip street and Lusher road, a two-mile stretch. The state highway department can now go ahead with condemnation preliminary to construction.

Alterations and Remodeling

All work planned and designed carefully, built correctly and completed speedily.
WEBSTER BUELL
4126 N. Woodward, Royal Oak
Liberty 9-4100

Registrations Reach 3,003 In Westwood

"This inevitably would mean reduction of the teaching staff. If substitute teachers could be used when regular teachers are ill, teachers who leave could not be replaced, special teachers would be eliminated and no teachers added as enrollment increases. The number of pupils per class might be increased beyond most effective instruction size."

"These ARE the realities we face. They are not inventions."

Northwestern X-Way Gets S'field OK

SOUTHFIELD — The Southfield council Monday night approved preliminary plans for the Northwestern expressway section between Philip street and Lusher road, a two-mile stretch. The state highway department can now go ahead with condemnation preliminary to construction.

Alterations and Remodeling

All work planned and designed carefully, built correctly and completed speedily.
WEBSTER BUELL
4126 N. Woodward, Royal Oak
Liberty 9-4100

Registrations Reach 3,003 In Westwood

"This inevitably would mean reduction of the teaching staff. If substitute teachers could be used when regular teachers are ill, teachers who leave could not be replaced, special teachers would be eliminated and no teachers added as enrollment increases. The number of pupils per class might be increased beyond most effective instruction size."

"These ARE the realities we face. They are not inventions."

Northwestern X-Way Gets S'field OK

SOUTHFIELD — The Southfield council Monday night approved preliminary plans for the Northwestern expressway section between Philip street and Lusher road, a two-mile stretch. The state highway department can now go ahead with condemnation preliminary to construction.

Alterations and Remodeling

All work planned and designed carefully, built correctly and completed speedily.
WEBSTER BUELL
4126 N. Woodward, Royal Oak
Liberty 9-4100

Looking for a pet for the children? See the Classified columns under "Pets for Sale."

Custom
Early American Style
Hi Fi Cabinets
And Installation
Your
Stromberg Carlson - DuMont
Dealer
Birmingham Electronics
217 W. Maple MI 6-8410

VAN HORN

2584 Amberly

IN BLOOMFIELD VILLAGE

Five bedroom colonial on large beautifully landscaped double lot. Three full baths, three lavatories, screened porch, large breakfast area plus separate dining room, spacious living room, paneled library, carpeting and drapes, finished paneled recreation room with built-in bar. Priced far below cost. Truly an excellent buy.

BLOOMFIELD HILLS
\$7000.00 DOWN
WHITE SOUTHERN COLONIAL

High on a hill and overlooking Cranbrook and Kingswood. 1.9 acres. 35 foot living room in this four bedroom, three bath mansion. Separate stairway to servants' quarters, separate dining room, paneled library with second fireplace, beamed ceiling family room adjacent remodeled kitchen, two screened porches, gas heat. Only \$42,000.00.

IN THE HEART OF BIRMINGHAM

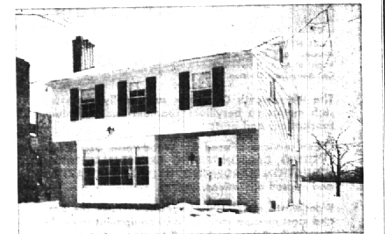
Perfect for retirees or young marrieds. Three bedroom, 1 1/2 story asbestos shingle. Near as a pin. 1 1/2 car garage. Trees. \$13,000.00 FHA \$1500.00 down.

CHARLES J. VAN HORN
576 N. WOODWARD
MI 6-2400 JO 4-5644

Yesterday A Dream, Today A Reality



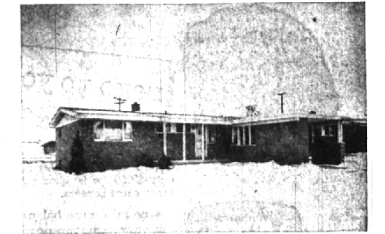
Just one block from Quarton school, yet you will find that a tranquil atmosphere prevails on the beautiful corner site. Handsome fieldstone fronts this 4 bedroom with 2 full baths. Two of the bedrooms and a bath are on the first floor, one of the second floor bedrooms is enhanced by a "Cape Cod" alcove. The dining room is entirely separate from the unusual kitchen; the porch is glazed and heated. Perfectly priced at \$36,000.



Brand new home, and it overlooks the park and is near schools. Paneled activities room has built-in desk and bookshelves. All Hot Point kitchen with built-in oven and range. Full dining room. Double closets, 3 bedrooms. 2 baths, plus first floor lav. No equal in a three bedroom new Colonial here at \$33,900.



Ranch houses with 4 bedrooms at a price are hard to find. That alone commands attention here, add \$3. If in fact this ranch is brand new and located directly off Cranbrook Road. Deceptively spacious, the home has, in addition to the 4 bedrooms, 2 1/2 baths, covered porch, deluxe kitchen, 2 car garage, full basement. An amazing value in style and location at just \$36,800.



Pleasing contemporary design for the 3 bedroom family. A house that feels free and non-conforming with studio beamed living room ceiling, extra lavatory, full basement, lovely carpeting and appointments. It is set to advantage on a most attractive site. The full price is only \$19,900. A present 4 1/2 % mortgage may be assumed.

Watt, Manuel & Snyder, Inc.
298 South Woodward
MI 4-6300
Realtors
Birmingham, Michigan
Jordan 6-2323