

# Bloomfield Fest

—WALNUT LAKE  
—BLOOMFIELD FARMS  
—THE BRAES  
—MEADOW LAKE  
—LOVE PINE HEIGHTS  
—LOVE PINE HILLS

Marian Patrick—MA 6-3029

## AFS Students Speak At Walnut Lake PTA

WALNUT LAKE—Two American and three foreign students reported on their experiences as exchange students Monday at the Walnut Lake PTA.

The foreign students, who reside with community families during their stay here, told of their impressions and experiences in America as well as life at home.

ALTILIO CORTELLA of Italy said that participation in clubs and other student activities prepares American students for leadership and adult life better than the academic emphasis of schools in his country.

JACQUELINE BIRON of France, noted that French schools are not co-educational and she

## Snow Means Fun for Scouts, Brownie Troops

WALNUT LAKE—Walnut Lake senior girl scouts, Margaret Roberts and Kay Graber, joined Birmingham senior troop 349 Feb. 6 for a weekend of outdoor living at Camp Narrin.

Brownies of troop 755 are hoping the snow will stay until the wood skating caps which they are weaving on straws will adorn their heads. Topped with pom poms, 13 of them will be bouncing along Walnut Lake hills quite soon.

Mrs. Donald Perrin's brownies made bird feeders recently and hung them on the trees in time to stave off bird starvation.

Intermediate troop 755 held a court of awards ceremony Feb. 4. Janice Burkart, Marcia Greengrich, Karen Hufnagel, Caroline Marx, Nancy Milne, Marcia Mullen, Penny Pittard, Marion Swantek and Susan Turner were presented with badges.

John Kessler of W. Dartmoor road will divulge professional secrets to the girls of troop 318 who begin work on the radio and television badges soon.

Kessler is a writer-producer on the staff of WJLH.

A member participation program was held Feb. 2 at the Walnut Lake school with members of Mrs. Fred Foy's troop and Mrs. Herbert Marx' troop attending. Program-aides, Kay Graber and Margaret Roberts were on hand to help with the song and games session.

## HANDBAGS REPAIRED

We repair catches, straps, zippers, handles, repaired or replaced.

**HARRISON'S LUGGAGE AND LEATHER GOODS**  
233 E. Maple MI 6-8088  
East of Woodward  
Also Detroit, 1217 Griswold

## PLANT BIG SHADE TREES NOW

NOW IS THE TIME FOR PLANTING BIG SHADE TREES WHILE THE GROUND IS FROZEN—because of less damage to lawns, walks and drives. Delay in the spring when the Frost Laws are posted on all residential streets. Also delay by rains leaving the ground too wet.

We, therefore, urge you not to wait if you are planning to have any large trees planted this year.

COME OUT AND SEE OUR TREES NOW

- SUGAR MAPLE
- RED MAPLE
- MORAIN LOCUST
- PIN OAK
- SYCAMORE
- CLUMP BIRCH

## FOLKERS NURSERY COMPANY

Wholesale inquiries welcomed  
NURSERY LOT  
CHERRYHILL & MIDDLEBURY  
GARDEN CITY  
GA. 1-1363

2  
LOCATIONS

HIG TREE LOT  
MAPLE & TELEGRAPH  
BIRMINGHAM  
MI. 6-8727

## Walnut Lake Hosts WNFGA Official

WALNUT LAKE—Mrs. F. G. Garrison, international cooperation chairman for the WNFGA Michigan division, will be the guest speaker at the March 2 meeting of the Walnut Lake WNFGA at the home of Mrs. W. L. McCane, 6100 Old Orchard Drive.

Mrs. Garrison's talk will cover the United Nations plan in garden clubs, the International Farm Youth Exchange program and the August meeting of the Associated Country Women of the World which takes place in Edinburgh and which she will attend.

## Bloomfield Farms WNFGA Schedules Fashion Show

BLOOMFIELD FARMS—Bloomfield Farms WNFGA is sponsoring a style show at 12:30 p.m. March 3 at the Franklin Community Church. Fashions from Aivins of Pontiac will be featured.

Tickets for the event may be obtained from the general chairman, Mrs. George Wirth, 1355 S. Clunbury road or Mrs. Charles Lory, 6700 W. Dartmoor road, ticket chairwoman.

Are you in the market for a home? Then read the "Houses for Sale" columns in the Classified Ad section of this week's Birmingham Eclectic.

heartily approved of our methods. The foreign students, who reside with community families during their stay here, told of their impressions and experiences in America as well as life at home.

BENOTA MEYER of Argentina was very impressed with our country which he is enjoying for the first time. He also remarked that it was difficult to limit himself to three meals a day instead of the regular four he had at home.

WILLIAM GROVER, who went to Indiana, told of the Pioneer people, the Laplanders and the reindeer herds he saw.

KITTY HANNA, American student in Denmark last year, remarked "I didn't even know Denmark was when I was assigned there but after living with these friendly people and going to their schools (which are much harder than ours), I really love them. My Danish family and friends told me I wish you could all have this experience as we have had."

Her feelings were those voiced by all the students who spoke to a fascinated audience.

## Bloomfield Residents Attend Dinner-Dance

BLOOMFIELD FARMS—Some 10 couples attended the dinner-dance at Botsford Inn on Saturday sponsored by the Bloomfield Farms Property Owners Association. Mrs. John Fancher was general chairman.

Cocktail parties preceding the dance were given by Mr. and Mrs. Walter P. Meads, Mr. and Mrs. Herbert Marx and Mr. and Mrs. George Beck.

## Library Mothers Entertained at Tea

WALNUT LAKE—Mrs. Joseph Pais recently entertained 20 members of the Walnut Lake Mothers' Library staff at a tea in her home on Valley Spring Drive.

Mrs. R. Brinkman, Mrs. Donald Kipp and Mrs. R. J. McBride served as co-hostesses.

## HAPPY HOMER

by Janis & Stier



"Tag me, you idiot, so the game will be over and we can all go over to JANIS & STIER!"

call  
MI 6-5555  
**JANIS & STIER, Inc.**  
653 S. Eton, Birmingham

## Accident Severs Woman's Feet

SOUTHFIELD—A 30-year-old Orchard Lake woman was reported in critical condition by Beaumont hospital officials Wednesday after both her feet were cut off when she was hit by a car Tuesday.

Mrs. Angelina Rubino and her son-in-law, Joe Lopez, were attempting to fix a flat tire on Northwestern highway, north of 12 Mile road.

Norman Fuller, 30, of 2465 Little Trail, Walled Lake, was the driver of the car which struck Mrs. Rubino.

Birthdays, anniversaries, guests, births, parties are all now—call the society editor about them.

Feb. 10, 1959 THE BIRMINGHAM (MICH.) ECCENTRIC 5-E

## Span Deserts Spic

WING LAKE—"Span" has strayed, and "Spic" is lonesome. One of a pair of beagles named Spic and

Span, the dog strayed from the home of his owners, the A. E. Gentrys, of Pickering road, this week. If he knocks on any doors, tell him Spic is waiting for him

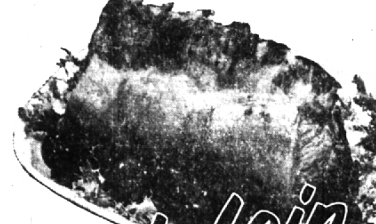
## Just a Reminder . . .

Save time and disappointment. Have your Lawn Equipment Serviced Now before the Spring rush. We service all makes. PICKUP and DELIVERY.

**Nordstrom**  
EQUIPMENT and SERVICE  
8465 Telegraph Rd. at Maple MI 4-5256  
Authorized Jacobsen Dealer

# Wrigley

Prices effective through Sat., Feb. 21. We reserve the right to limit quantities.



# Pork Loin ROASTS

FULL 7-RIB CUT

## 25<sup>¢</sup> Lb.

- Pork Tenderloin End 35<sup>¢</sup> Lb.
- Full Rib Half Loin Cuts 45<sup>¢</sup> Lb.
- Whole Pork Loin 47<sup>¢</sup> Lb.
- Full Tenderloin Half Loin 49<sup>¢</sup> Lb.

CARDINAL

## Tomato Juice

SAVE 6c

46 Oz. Can **19<sup>¢</sup>**

PILLSBURY'S

## Cake Mixes

SAVE 19c

4 Pkgs. **1<sup>00</sup>**

White  
Yellow  
Chocolate  
 Spice  
 Caramel  
 Orange

Plus Gold Bell Stamp

UKULELE HAWAIIAN

## Sliced Pineapple

SWEET & TENDER

SAVE 17c

## Green Giant Green Peas

CHUNK STYLE

Plus Gold Bell Stamp

## Food Club Light Meat Tuna

MEATY & FLAVORFUL

SAVE 10c

## Hygrade Beef Stew

MEL-O-SPRED GOLDEN

## Margarine

SAVE 24c

3 1-Lb. Ctns. In Qtrs. **49<sup>¢</sup>**

TOP FROST FROZEN

## Cherry or Apple Pie

Plus Gold Bell Stamp

24-Oz. Pie **49<sup>¢</sup>**

# 150 FREE Gold Bell Stamps

WITH THE PURCHASE OF 2 LBS.

THICK SLICED BACON Hickory Smoked Sugar Cured **2 Lbs. 99<sup>¢</sup>**

FREE 50 EXTRA Gold Bell Gift Stamps

WRIGLEYS  
This Coupon Good at Wrigleys thru Saturday, Feb. 21  
50 EXTRA GOLD BELL STAMPS  
With the Purchase of 2 Lbs.

THICK SLICED BACON Hickory Smoked Sugar Cured **2 Lbs. 99<sup>¢</sup>**  
This Coupon Has No Cash Value. Please Give to Cashier Before She Checks Your Order.

WITH THE PURCHASE OF 1 1/2 GAL. CTN.

SEALTEST ICE CREAM 1 1/2-Gal. Ctn. **89<sup>¢</sup>**

FREE 50 EXTRA Gold Bell Gift Stamps

WRIGLEYS  
This Coupon Good at Wrigleys thru Saturday, Feb. 21  
50 EXTRA GOLD BELL STAMPS  
With Purchase of 1 1/2 Gal.

SEALTEST ICE CREAM 1 1/2 Gal. Ctn. **89<sup>¢</sup>**  
Limit One 1 1/2 Gal. Ctn. With Coupon  
This Coupon Has No Cash Value. Please Give to Cashier Before She Checks Your Order.

With the Purchase of One Quart

TOPCO QUALITY Liquid Detergent 32-Oz. Can **59<sup>¢</sup>**  
For Dishwashing

FREE 50 EXTRA Gold Bell Gift Stamps

WRIGLEYS  
This Coupon Good at Wrigleys thru Saturday, Feb. 21  
50 EXTRA GOLD BELL STAMPS  
With the Purchase of 1 Quart

TOPCO LIQUID DETERGENT 32-Oz. Can **59<sup>¢</sup>**  
Limit One With This Coupon  
This Coupon Has No Cash Value. Please Give to Cashier Before She Checks Your Order.

Plus Gold Bell Stamp

8 3/4-Oz. Can **10<sup>¢</sup>**

SAVE 17c

6 303 Cans **1<sup>00</sup>**

Plus Gold Bell Stamp

6 1/2-Oz. Cans **95<sup>¢</sup>**

Plus Gold Bell Stamp

24-Oz. Can **39<sup>¢</sup>**

Plus Gold Bell Stamp

## FRESH CUBAN Pineapple

For Canning or Freezing

Plus Gold Bell Stamp

Large 9 Size **29<sup>¢</sup> ea.**

Case of 9 . . . \$2.59

GET FINER GIFTS FASTER WITH GOLD BELL GIFT STAMPS

**Telegraph and Maple 855 S. Hunter** **1855 S. Woodward**  
9-9 Monday through Saturday

Hours: Monday, Tuesday, Wednesday, 9 a.m. till 6 p.m.  
Thursday, Friday, Saturday 9 a.m. till 9 p.m.