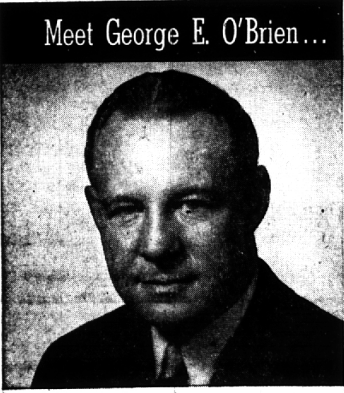


A "Happy New Year"
to All Our Customers!
STEELCRETE GR. 4-3601

Landscape Design and Construction
Lawrence E. Smith
135 N. WOODWARD
in the Wilson Building
Phone MI 4 2036



Meet George E. O'Brien...

...a good man to know

George O'Brien is an old "pro" when it comes to securities. His career started back in 1928! His background is his strength—for it includes "putting together" underwritings of new issues and managing syndicates. His broad experience with every type of security was gained by working as a Registered Investment Counselor. With 31 years of experience, he's learned a lot... a lot on how to help people with their investments.

George is highly informed as are all Goodbody representatives. George offers truly competent brokerage advice and service. This is possible because Goodbody's well known and highly respected Research Department keeps him constantly abreast of market facts and possible trends. How about calling him today at:

GOODBODY & CO.
MICHIGAN LIFE BUILDING
N. WOODWARD NEAR 13 MILE

Other Michigan Offices:
PENSACOLA BLDG. DETROIT 120 WEST FIRST STREET
FLINT

38 National Offices

year-end
BROADLOOM CLEARANCE!

- Plush Pile
COTTON \$3⁹⁵ sq. yd.
A tremendous value in one of the better cotton carpets.
- All-Wool
WILTON \$7⁹⁵ sq. yd.
Extra thick, extra durable. Resilient, luxurious underfoot.
- All-Wool
TWIST \$7⁹⁵ sq. yd.
Deep, nubby texture . . . won't show footprints or mat down.
- Wool-Nylon
TWEED \$4⁹⁵ sq. yd.
An unbeatable combination for long wear and good looks. Unusual decorator colors.
- 15 Denier
NYLON \$6⁷⁵ sq. yd.
Unbeatable for wear! Sheer elegance underfoot. Cut and twist pile in 13 high style colors.

- 100% All-Wool
TWEED \$6⁹⁵ sq. yd.
Heavy quality, soil-resistant tweed. An outstanding value at this low price.

Harold B. Brown
CARPETS AND RUGS
2863 WOODWARD (Between 11 and 12 Mile)
Open Monday, Thursday, Friday Evenings 'til 9

Fixed for Blades; Set for Cigarettes

Police today are searching for a person or persons well stocked with cigarettes, change and a No. 2 razor.

The thief or thieves broke into Landrum's Service station, 1294 S. Woodward, between 5 a.m. and 8 a.m., Dec. 27.

They took \$20.02 from a change bag, an undetermined amount of change and cigarettes from a cigar machine, and the razor.

The job was apparently done by amateurs, a Birmingham detective said.

Holidays'll Do it

Because of the New Year's holiday, Baldwin public library has announced the following Library hours for the week of Dec. 28: Monday, Tuesday, and Wednesday, Dec. 28, 29 and 30, 9:30 a.m.-5:30 p.m.; Thursday, Dec. 31st, 9:30 a.m.-5 p.m.; Friday, Jan. 1st, closed; Saturday, Jan. 2nd, 9:30 a.m.-5 p.m.

Situation Changed; They Want to, Too

Due to consideration by the plan board are two requests for zoning changes, both in the same area.

Archie Addison, 404 Park, requested that two lots, on the north side of Oakland, from Park to Hunter, be changed to a business zoning classification.

This property is no longer suitable for residential dwelling, due to heavy traffic and noise, Addison said.

A similar request for similar reasons was posted by Coy McGee, 287 Oakland, for a lot at the northwest corner of Park and Oakland.

Openings Available In Art Classes

Openings in Bloomfield art association classes are still available for winter term session.

Instruction is offered in contemporary jewelry, studio art for business men, creative dance, water-color, sculpture, portrait painting, oil painting and many other art areas.

BIRMINGHAM LAUNDROMAT
At Your Service
Midwest 4-8225

Heavy Items Washed Or Dried and Dried Cotton Rugs (9x12, Some Larger) Bedspreads Slipcovers Washed or Dried and Dried

MEMBER THE BIRMINGHAM LAUNDRY SERVICE

8 A.M. - 6:15 P.M. - Wed. & P.M. Sat. 5 P.M.

1000 South Adams Rd. 1 Block N. Of Liscola

Get these down!
MI 6-7171
MA 6-2877
for **Bloomfield Cab**
24 hour service

Distinctive Apparel for BOYS and GIRLS and SUBTEENS, too!

Pam's of Bloomfield

Bloomfield Plaza 6562 Telegraph at Maple MA 6-5925
OPEN FRIDAY EVE TIL 9

david k. falvey

20% savings guaranteed on your fire insurance program

insurance agency
106 S. Woodward, Birmingham
midwest 4-7803

PUNCH BOWL SETS

Including such famous name brands as FOSTORIA, IMPERIAL and WESTMORELAND

\$4⁹⁵ set to \$39⁹⁵ set

• IMPERIAL CANDLEWICK
15 piece set . . . \$33.00

Largest stock of bar glassware in this county to fit any taste or budget.

PONTIAC POTTERY
"Michigan's largest dinnerware specialty store"

2099 S. Telegraph FE 2-8642

Adjacent to north side of Miracle Mile
Open Daily and Sunday 10 to 8

Devon Crafts
"in the red barn"

Antiques

- Custom-made furniture
- furniture refinishing and repair
- hand-decorating

MI 4-2476

Bench (as shown) from \$29.50

Custom Formica Cabinets and Tables

1135 WEST LONG LAKE RD., BLOOMFIELD HILLS

DOWN TO EARTH

Birmingham Shows Its Christmas Spirit

By ALICE WESSELS BURLINGAME
Special Writer for The Birmingham Eccentric

The streets of Birmingham and its "suburbs" are bursting all over with exotic Christmas lighting. Plan an evening to drive up and down the streets and enjoy the sights.

Many blocks are joining together this year with the premise: "Let's have decorating contest and see who will do the best job." This is a tough assignment for the judges because I think each house in its own way does its best whether there are just a few lights or an ornate display. You see every year I freeze my toes on the assignment myself.

TO BEGIN with those participating in a contest should not know the right of the judging so that they keep the display "up to snuff" all the time. An easy way to calculate the "best" display is to run on a score of 10. With this figure being high, workmanship, design and appropriateness to the architecture of the house are the factors to consider in the total figure.

These judges should be assigned to a contest. You would be surprised how the method of calculating the contest will work because Mrs. Burlingame the contest member always calculates low but maybe the others will be lenient but the average of the three figures will be consistent.

JOHN KLINE, 228 Brown, enjoyed doing his decorating and it shows. The spotlight focused on the brick-colored colonial door emphasized the interesting architecture. An old-fashioned Christmas tree was placed in their projecting bay window and also one on the lawn.

J. T. Downey at 1408 Bates did a good job with his corner location. Each side of the doorway are two multicolored lighted trimmed trees. The storm door was covered with brilliant, red plastic upholstery material spotlighted by a wreath.

er with brilliant, red plastic upholstery material spotlighted by a wreath.

OUT ADAMS the lovely home areas from Big Beaver heading north are literally lighted jewel boxes with the irregular terrain. Many of the residents have Christmas lighting showing in the front and rear of their homes. Drive out that way for a concentrated treat.

AT 815 Pine Hill the occupants had placed colored lights on andora jumper hedge (about eight inches high). This is a simple trim but effective. When it shows the heat of the bulbs melts the snow so that the light comes through.

THE R. L. SHUGGS at 6250 W. Surrey in Foxcroft have two deer heads each side of their front door with large red balls attached to the ends of the antlers. Now these are not real deer heads. They were shot in Texas over 50 years ago by Mrs. Shugg's father and he didn't want anything to happen to his treasures so on and on they go well taken care of by following generations. The heads are very small in comparison (Why, Texas, small?) and have huge antlers.

AT 314 WEST ORCHARD Hill road I just had to go up to the front door and congratulate them on their trimming. Cedar roping in around the door with blue and green lights alternating (remember this good combination). At the front door a large wire form had been made for a tree with balsam tips put into the form.

A good travelling habit to get . . .

GET THE

TRAVEL-RAMA
TRAVEL AGENCY
HABIT

Phone LI 8-2800
for big-city travel service, free ticket delivery, NO service charge.

State Licensed 24 Hour Nursing Service

Member of Michigan Association of Approved Nursing Homes

Tower Park Nursing Home
1607 So. Lafayette • Lincoln 7-0430 • Royal Oak, Mich.

AMBULATORY * Excellent Food * DIABETIC CARE * Special Care * STROKE * CARDIAC * Physician on * LEVINE-TUBE POST OPERATIVE * 24 Hour Care * MEDICAL CARES

X-Ray and Laboratory Facilities Available

ENLIGHTENED PERSONAL SERVICE COSTS NO MORE

Doubts, misgivings and fears often attend thoughts of funeral homes, arrangements or funeral directors. This is indeed unfortunate, because today's funeral director and his establishment are modern, dignified and reliable. And he is sincerely interested in helping you understand the business aspects of the funeral at a time not burdened by personal loss.

"What services should I expect from the funeral director?" Or any other questions you may wish to ask.

For private consultations, call Liberty 9-0500, or stop in for a visit. Qualified funeral directors will personally conduct you on a guided tour without obligation, of course.

W.E. VASU Funeral Home
4375 North Woodward
between 13 & 11 Mile Roads

HAPPY NEW YEAR 1960

We've got a l-a-n-g list of good wishes for your Happy New Year!

Dickinson's
WABEK BUILDING - BIRMINGHAM

Commission Nixes Its Idea for More Library Parking

Now that they've had a good look at engineering drawings of a new 27-car parking lot immediately behind the public library on Martin street.

Commissioners Lance Minor and William Burgum said they oppose the lot if it cannot be reserved primarily for library patrons.

Commissioner Carl F. Ingraham claimed the lot seems to be "an insignificant gesture" in meeting that area's parking needs. If parking is needed, then a much larger lot should be planned, he said.

IF THE SMALL lot were constructed, it would "sacrifice a lot of ethics for a few parking spaces," believes Commissioner Charles Renfrew.

The library lot first was suggested last May during the commission's committee meetings on the budget. In October, the city staff was asked to put the commission's idea on paper.

They're Telling Stories Again

It's nearly sign-up time for Baldwin public library's next set of Free-Story hours.

According to Mrs. Ann Burch, of the boys' and girls' department staff, registration may be made either in person or by phone beginning Jan. 6th. The six-week series of thirty minute programs will commence the following week, Jan. 13th, at 10 a.m.

Speaks on Children - From Experience

On Jan. 5 at 8 p.m. Terry Preschool mothers will hear Lois Middleditch speak on "Observation of Nursery School Children."

Mrs. Middleditch is director of Cherub Haven nursery school, Birmingham.

The meeting will be in the library and refreshments will be served.

Keeping 'Em Clean

There'll be a brand new broom for Birmingham streets in the new year. The city commission has ordered a \$24,652 automatic street sweeping machine from Telford Equipment Co., the low bidder. The present seven-year-old sweeper will be traded in.

Look For Our Big Big Big January Pre-Inventory SALE

Har From HI-WAY FURNITURE MART
1532 WOODWARD AVE., BIRMINGHAM, MICH.
4 BLOCKS N. OF 14 M.L.R. Midwest 4-1410