

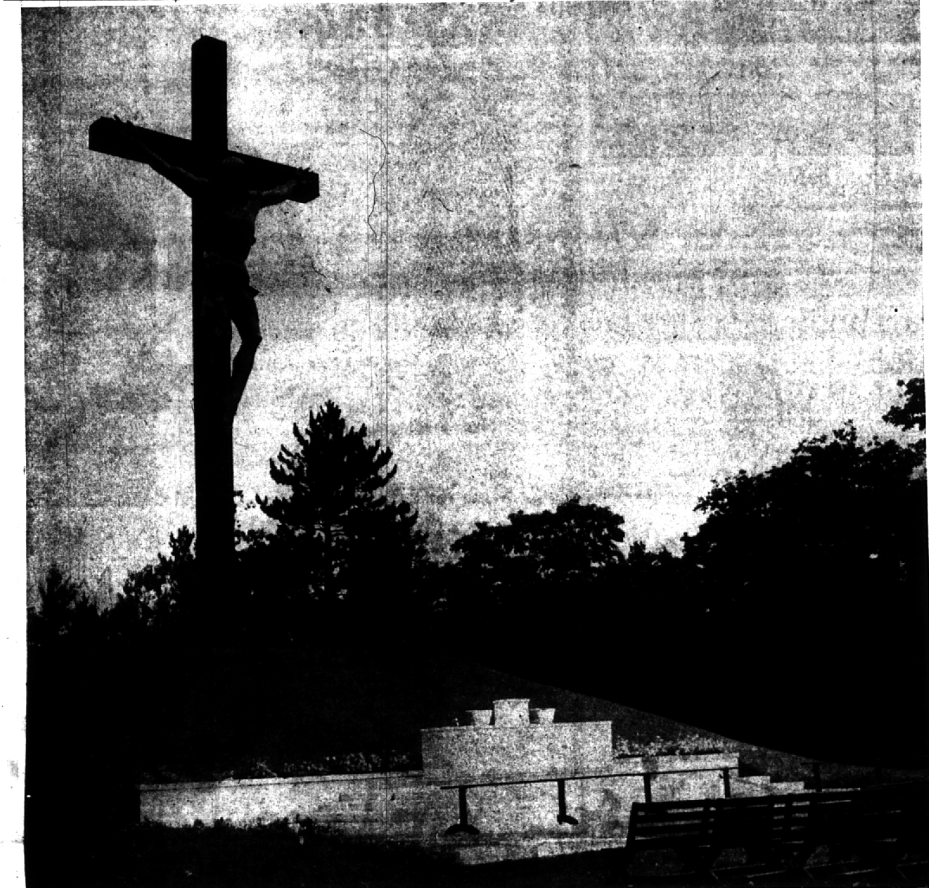
In a few weeks Christmas will be here, a date each year that commemorates the birth of Christ Jesus. This annual date certainly ought to mean more to each of us than our own birthday, don't you think? Christmas came into being so that Christians could be made mindful of the life and teachings of this Man . . . so that each of us might be better human beings.

The Birmingham Eccentric

BIRMINGHAM, MICHIGAN

Thursday, December 3, 1959

SECTION
B



At Michigan's Newest Shrine

Silhouetted against a sunless winter sky, this gigantic crucifix casts an overpowering presence in the wooded glade at Michigan's new Indian River Catholic shrine, near the tip of the lower peninsula. Designed by nationally-famous Birmingham sculptor Marshall Fredericks, the huge bronze statue of Jesus on the cross atop Calvary

was specially cast in Norway. The cross itself was hewn from giant redwood timbers. Thousands of people from every state, and from many foreign countries already have visited this shrine which was dedicated only this summer. (Eccentric Photo by George Wm. Averill)

Climatic Conditions 'Bug' Police Chief

Birmingham Police Chief Ralph W. Moxley, whose department keeps records of all traffic accidents occurring within the city limits has observed that the type and causes of accidents tend to follow a definite pattern based on seasonal weather conditions.

Knowledge of this pattern can be of great value to capable drivers in preventing accidents, he pointed out.

"FOR EXAMPLE, the winter-type accident is most likely to be a collision resulting from reduced visibility due to bad weather, or a crack-up resulting from lack of control on snow or ice," the chief explained. "And frequently it's a combination of both these factors."

He further noted that accidents of this type are especially common during early winter, when many motorists are caught unprepared both as to their driving habits and proper winter equipment.

"The onset of winter-weather usually brings on a rash of accidents, traffic delays, and line-ups at service stations, most of which could be easily prevented by a little forethought and preparation," chief Moxley said.

"THIS year I'd like to see our winter season get off to a better start than usual. We can do it if drivers follow three simple rules: 1) Provide their cars with the necessary equipment to assure maximum visibility. 2) Take advantage of scientific advances in the field of skid prevention, and 3) maintain the alertness and caution which characterizes the expert driver in any season of the year."

Moxley pointed out that most cars come equipped with normal vision-clearing apparatus. It then boils down to having this equipment checked and put in top operating condition. Defrosters should work with full power and efficiency. This may necessitate nothing more than installing new thermostats.

Windshield wiper efficiency should not be taken for granted just because the arm moves back and forth across a segment of the windshield. If the blades are old and sunbaked, the rubber may

be dead and should be replaced. THE ARM pressure should be checked, and it should show at least one ounce of pressure for each inch of blade length. New cars have that, but as cars grow older, the pressure peters out and on many cars there isn't enough pressure left in the old arms to do anything more than make blades streak the windshield, or ride over snow that sticks to the glass. This is a dangerous situation.

Beyond these basic precautions, adequate wintertime visibility becomes a matter of the driver's taking time to scrape all windows free of accumulated ice or snow before starting out. This can become a chore for drivers who park their cars outdoors, day and night, the chief conceded, but it's a chore which no driver can afford to shirk. It's all the more important to the drivers who park their cars outside.

WITH RESPECT to scientific advances in skid-prevention, chief Moxley pointed out that a great deal of research has also been done by the Committee on Winter Driving Hazards of the National Safety Council.

All kinds of skid-reducing equipment have been tested and driving techniques have been practiced and verified and discarded. Knowledge gained from these tests has become part of the lore of safe winter driving as practiced by both professional drivers and well-informed amateurs.

"We urge drivers to learn all they can about the relative benefits of various equipment designed to minimize skidding and getting stuck," the chief emphasized. "At all times, when the weather's against us, we don't achieve safety by wishing for it. Knowledge is the answer, and prompt action based on that knowledge is the remedy."



Will Have 'Met' Again

Plans for the Metropolitan Opera's five-day appearance in Detroit next spring are discussed by Mrs. Henry Ford II, general chairman, and Frank W. Donovan, president of the Detroit Grand Opera association. The Metropolitan will present evening performances at Masonic temple on May 23, 24, 25, 26 and 27. The opening night again will be a partial benefit for the Detroit Museum of Art Founders society.

To Help Publicize Boy Scout Jamboree

William J. DeGraze, 2113 York-shire, Birmingham, has been appointed to the national public relations staff of the 1960 boy scout jubilee jamboree to be held next July at Colorado Springs, Colo.

The event is the fifth national jamboree and marks the 50th anniversary of the boy scouts of America.

YA of YMCA Gonna be Busy

December will bring two busy Friday nights for Birmingham YMCA young adults. Group chairman Miss Marion Cannon reported that travel pictures will highlight the Dec. 4 meeting, while on Dec. 18, members will go Christmas caroling.

Al Truman will present a program of slides entitled, "Adventure in Europe" on Dec. 4th starting at 8 p.m. in the YMCA building, 400 E. Lincoln. Program chairman is George Lyon, with Miss Betty Hayes in charge of refreshments.

And to spread the Yuletide spirit around the Birmingham community, the group will meet at the Y on Dec. 18, at 7:30 p.m., then serenade various segments of the city with Christmas carols. Miss Ellen Coates, Jerry Miley, Arliss Whiteside and Paul Dreman are handling arrangements for the evening activities which will conclude with a social hour and refreshments served around the fireplace at the Y building.

Miss Cannon reminded members that tickets are now available at the Y for the New Year's Eve Dance at the downtown Detroit Masonic temple.

She also extended an invitation to any single young adult between 20 and 40 years of age to become a member of the organization of Young Adults. Further details may be secured by calling Miss Cannon, 1094 S. Huffield, or Con Ekken at the Y.

PECK'S
Cleaning and Pressing
Cash and Carry
Suits—Top Coat— \$1.70
Plain Dresses
(delivery service \$1.00)
108 So. Woodward Ave.
MI 4-7724
Call now for pickup and delivery

Get these down!
MI 6-7171
MA 6-2877
for
Bloomfield Cab
24 hour service

TV SERVICE MI 6-2035
9 A.M. - 6 P.M.
ON ALL MAKES
• TELEVISION
• RADIO
"Guaranteed Work"
• AUTO RADIOS
• RECORD PLAYERS
WE USE RCA TUBES
Birmingham Television Co.
1842 S. Woodward, 1 blk. N. of 14 Mile Road, Birmingham
OPEN EVERY EVENING TILL 8 P.M.

Devon Crafts
"in the red barn"
manufacturers of benches and furniture
Antiques
• Custom-made furniture
• furniture refinishing and repair
• hand-decorating
Group of Copper Weather-Vanes and Farm Bells
Bench (as shown) from \$29.50
MI 4-2476
Custom Formica Cabinets and Tables
1135 WEST LONG LAKE RD., BLOOMFIELD HILLS

only you can give...
ALL THE LOVE THAT A GIFT CAN HOLD
in a portrait by - -
bill williams
"the best in photography"
Open a Charge Account at Bill Williams
LI 3-4480
1107 Crooks Rd. (at Main) Royal Oak

For HER Christmas!
Daniel Green
SLIPPERS
You can be sure these comfy new slippers will be appreciated. So thoughtful—so relaxing! Shop Sherman's for complete selection.
Don't forget Men's Night December 7th
Miss Sherman's
115 W. MAPLE BIRMINGHAM
OPEN FRIDAY EVENINGS TILL 9 P.M.
Birmingham's Exclusive Florsheim Dealer

5 1/2 Pink & Blue Corduroy \$5
5 1/2 Red & Black Velvet in Gold Trim \$5

Sherman SHOES