

**ROBERT R. MCNULTY PLANO PARLIAM**

**DECEMBER PROGRAM**

**STAR OF BETHLEHEM**  
—an interpretation

Wednesdays—4:00 P.M.  
Saturdays, Sundays—2:30 P.M., 3:30 P.M.

**SPECIAL CHRISTMAS SCHEDULE**

Monday, December 28, at 3 P.M.  
Tuesday, December 29, at 3 P.M.  
Thursday, December 31 at 3 P.M.

Week-ends—23c to all (plus museum admission to non-members: Adults 50c—Children 25c)

**Cranbrook Institute of Science**

Lone Pine Road Bloomfield Hills  
Museum open Monday through Friday, 2:00 P.M. to 5:00 P.M.—no admission

**Highlights of 1959**

(Continued from Page 2-B)

village roads. They elected incumbents Don Hunter and William Worcester, along with newcomer Fred Ziegel, to the village council.

Bloomfield Hills school district voters approved an increase in operating millage of 4.6 mills for three years, and 3.6 mills for three more years. The board immediately began rehiring of teachers not replaced earlier because of a \$300,000 budget deficit.

Beverly Hills voters re-elected Chester F. Guilmet, Dr. Douglas J. Wood and Ted Shurtluff to their village council, and added newcomer Leo J. Linsenmeyer to that body.

Issue of March 19  
Seven Bloomfield Hills high school students were held for investigation of assault and battery in the severe beating of a Clawson truck driver, who was hospitalized after the incident in Bloomfield Hills.

Expenses of operating Eton park rink, which closed March 1, threatened to force the Birmingham recreation board to end its fiscal year with a deficit.

Beverly Hills council re-elected Marvin E. Cline to the post of village president for a second term.

A storm water advisory committee presented a five-point recommendation to the city council, calling for budgeting of \$3,500 to finance preliminary drawings for the city's proposed \$700,000 storm water system.

Councilman Ted Shurtluff blasted the voting practices of waste dumps in Beverly Hills. He charged that voters are going solo for candidates who live in their area.

Issue of March 26  
Birmingham approved a contract with the Birmingham ambulance company, accepting a bid of \$450 per month for a one-year period. The subsidy will assure availability of ambulance service to city residents.

DPW Director Harold K. Schone predicted construction of the Evergreen interceptor sewer would start in April.

Members of the Lutheran church of the Shepherd King at Maple and Middlebelt prepared to hold their first services this week in its new church.

Southfield township prepared to submit a proposal to cut township taxes from one mill to a half-mill. Residents of the township must approve the move at the annual meeting April 4.

West Bloomfield voters were urged to approve extension of the township's additional one-mill tax for a three-year period. The extra mill provides for township general operating funds.

Issue of April 2  
First Presbyterian church announced plans for a \$750,000 three-unit addition doubling the size of the present building.

Robert James of Williamsport, Pa., prepared to take over his duties as executive director of Family Service of Oakland county, replacing Mrs. T. Hollister Mahley.



**Death Halts This Southbound Freight**

The Grand Trunk freight was southbound, rolling fast on the downhill, last July. The train rolled through Birmingham, was almost at the 14 Mile road viaduct, Harvey Longchamp, 64, of 646 Michigan, Detroit, had been working on the tracks with a rail-grinding crew. He stepped from behind the grinder (right) and into the side of the diesel engine. Engineer William J. Emmons of Detroit halted his train as soon as he could. The Birmingham Eccentric's photographer, Phil Webb, was at the scene as the ambulance crew placed the unconscious Longchamp on the stretcher. He died en route to William Beaumont hospital.



**New Church Discussed**

George W. Romney (right) 1830 E. Valley, Bloomfield Hills, president of the Detroit Slacks, explains some of the features of the new Church of Jesus Christ of Latter Day Saints in March to the R. A. Cragins (left to right) Mrs. C. J. Theobald and Mrs. Romney.

replacing Mrs. T. Hollister Mahley.

Birmingham planning and city commission officials were urged to "plan now" for a comprehensive plan for the city's central business district.

Disc jockey Ed McKenzie, of Birmingham, prepared to begin a four-hour broadcast daily over station WHFI-FM, owned by Gay Meadows, of Birmingham.

A "Sell Michigan" program developed by the volunteer Industrial Ambassadors executive committee was announced by Merritt D. Hill, general manager of Ford Motor company tractor and implement division, Birmingham.

Issue of April 9  
All Birmingham's incumbent city officials were returned to office as nearly four out of ten registered electors balloted, a nearly record turnout for a spring election. Closest Birmingham contest saw Municipal Judge John C. Gentry, Jr., returned over his opponent, Oakland County Assistant Prosecutor Walter R. Denson.

Bloomfield, West Bloomfield and Southfield townships held annual meetings approving the 1958-59 budgets.

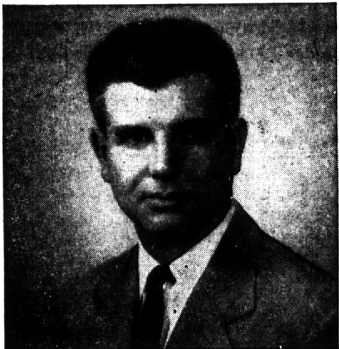
Richard N. Cogger, H. Earl Handon, and Frederick O. Johnson were all returned to city posts in Lathrup village. All incumbents were unopposed.

Detroit's strong bid for the 1964 Olympic games got another shot in the arm when President Eisenhower signed a congressional resolution formally inviting the event to Detroit.

Kites flew high when the Bloomfield art association and the Recreation department co-sponsored the area kite contest. Alan Crise, 15, of Walled Lake took highest honors, edging his airborne creation some 1,400 feet into the air.

Issue of April 16  
City Commissioner Florence Willett was named the first woman to hold a top Birmingham office. She took over as the new mayor pro tem, Harry M. Denyes, Jr., gathered reins of the city as its mayor.

(Continued on Next Page)



**Meet John K. Martin**  
a good man to know

"Kirk" is a real securities specialist and presently the Manager of Goodbody's North Woodward Branch. He is a U. of M. Business School graduate and started in the securities business back in 1945 after serving in the Air Force. Kirk has made a hobby out of economics—and his personal market approach is inclined to lean towards solid values and trends... long term investments rather than the hope for short, quick profits. Wise investing is Kirk's real "forte".

And, how can Kirk best help you?—with competent brokerage advice and service! Behind every Goodbody representative stands one of the finest research organizations in the brokerage field. The many skilled analysts in Goodbody's New York Research Department constantly supply Kirk and all our representatives with the latest marketing facts and possible trends. Why not call Kirk Martin today. You can reach him at:

**GOODBODY & CO.**

**MICHIGAN LIFE BUILDING**  
N. WOODWARD NEAR 13 MILE

Other Michigan Offices  
126 WEST FIRST STREET  
DETROIT  
FLINT  
88 National Offices

**LOCAL MERCHANTS**  
**ASK YOUR**  
**CO-OPERATION**

If it is necessary for you to exchange a Christmas Gift in any store, please do so by January 2nd

In some cases because givers did not have correct information as to size or some other detail, exchange may be necessary.

Please note that no exchanges of Christmas Gifts can be made after January 2nd, 1960

Abuse of the exchange and return privilege can cause a great deal of unwarranted expense. Therefore, as a matter of assistance to the merchants of Birmingham who wish to continue to make this service available to you, we ask your cooperation.

**Birmingham Chamber of Commerce**

Christmas Gift Suggestion . . .

**TROPICAL FISH**  
GUPPIES Complete Line  
15c each of Pet Supplies

**AQUA - MARINELAND**  
3015 12 MILE, BERKLEY (across from Berkley Theatre)  
open 7 days a week, Sundays to 5 P.M. LI 8-1885

Yule Greetings  
May your Christmas be Truly Joyous!

Birmingham  
Travel Service  
379 Hamilton

To all our friends  
**A Blessed Christmas...**

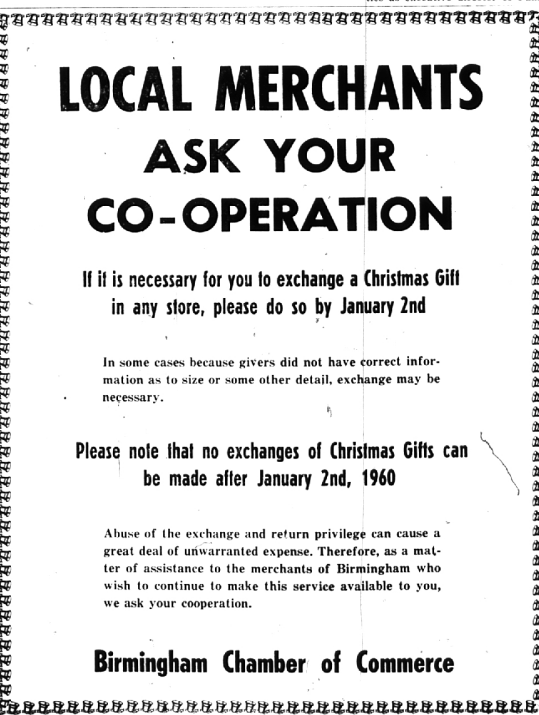
**McSweeney's**  
FINE FOOTWEAR  
277 Pierce St. Birmingham

**A Very Happy New Year**

GET IN THE MOOD!  
**HATS — HORNS — FAVORS**  
ALL AVAILABLE AT OUR PARTY SHOP

**BODINES**  
The Greeting Card Center

172 N. Woodward Next to Detroit Bank & Trust  
OPEN EVENINGS TILL CHRISTMAS



**AMERICAN SAVINGS**  
New Bloomfield Branch  
**NOW OPEN!**

Folks in this community are now able to enjoy the advantages of saving at AMERICAN SAVINGS . . . where they'll receive highest earnings with guaranteed safety. You are cordially invited to visit the beautiful new Bloomfield branch. A warm welcome awaits you.

**3 1/2%**  
Current Rate  
On ANY Amount

All Savings Insured to \$10,000 by An Agency of the United States Gov't

**AMERICAN SAVINGS**

**TELEGRAPH ROAD** at Maple in Bloomfield Shopping Plaza  
OPEN 9:30 to 4:30—FRIDAYS to 8:30 P.M. • Phone MAyfair 6-2546