

DESIGNS FOR LIVING

UNUSUALS
one-fifty west maple road • birmingham

AUGUST WHITE SALE

BATES SHEETS

	REG. PRICE	SALE
72 x 108	3.49	2.79
72 x 117½	3.99	3.29
81 x 108	3.99	3.29
90 x 108	4.49	3.79
81 x 117½	4.49	3.79
90 x 117½	4.99	4.29
108 x 122½	8.49	6.95

PLAIN CASES

42 x 38½	.99	.89
----------	-----	-----

Plain White Fitted

	Twin	Double
2.79 Bottom	3.29 Bottom	
2.99 Top	3.59 Top	

Scalloped White & Colored

72 x 108	3.99	3.29
81 x 108	4.49	3.79

Scalloped Cases

42 x 38½	1.19	1.09
----------	------	------

Plain Colored

72 x 108	3.99	3.29
81 x 108	4.49	3.79

Colored Cases

42 x 38½	.99	
----------	-----	--

Colored Fitted Bottoms

Single Size	3.99	3.29
Double Size	4.49	3.79

BATES BEDSPREAD

Pride of Vermont
Snow White and Antique White
Reg. 12.98—NOW 10.98

MARTEX TOWELS

Bath Size	1.98	1.89
Hand Towels	1.00	.89
Wash Cloths	.42	.35

PILLOWS

White Goose Down
Reg. 10.95—NOW 8.95
50% White Goose Down
50% White Goose Feathers
Reg. 8.98—NOW 7.98

Sofa Pillows

\$1.00
Assorted Patterns

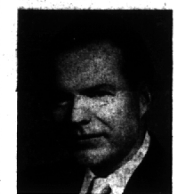
F. J. Holland
233 N. Woodward Ave.
CHARGE ACCOUNTS WELCOMED
WE DELIVER

BUSINESS BRIEFS



Wins First Place

Radio station WJA farm director Marshall Wells, 555 Fairfax, Birmingham (right) was awarded first place in the annual Michigan Associated Press Broadcasters news competition by AP Bureau chief Clem Brossier in ceremonies at the Detroit Press Club recently. "Farm Forum," cited as the "best local regularly scheduled farm show," originates each Sunday morning from Michigan State University.



RAYMOND E. HAYES

Promote Hayes On GM Public Relations Staff

Appointment of William E. Hamilton as staff co-ordinator of the General Motors Public Relations Staff was announced today by Anthony G. DeLoe, vice president in charge of public relations. He is replaced by Raymond E. Hayes who becomes manager of plant city and regional activities, reporting to Ralph W. Moore, director of the field operations section. Hayes previously was in charge of field relations activities and special projects.

Hayes, 32, Suffield, Birmingham, joined GM as a lecturer with GM parade of progress following his graduation from Wayne State University, Detroit, in 1939. After four years' service with the United States Navy, he was named unit manager with the GM previews of progress service show in December, 1945.

TWO YEARS later he was promoted to assistant regional public relations manager in the San Francisco office, and became manager of the GM public relations office in Los Angeles when it was opened in 1952.

Hayes returned to Detroit in July, 1954, as supervisor of the General Motors Management Clubs, a position he held until February, 1958, when he was placed in charge of field relations activities and special projects of public relations staff.



New President

Dean S. Fields, 27280 Red River, Lathrup village, was named president of the McCord corporation, Detroit, upon the retirement of William G. Hancock. He joined McCord in 1939 as manager of the production planning and material control department and was eventually promoted to works manager and then manufacturing vice-president.

The LUMEX INVALID WALKERS

Adjustable For Adults and Children
MICHIGAN FIRST AID
Invalid Needs—Sick Room Supplies
1621 S. Woodward Ave., Royal Oak
3 Doors North of 16 Mile
LI 2-3027 JO 4-6847

Medical Mirror

Polycystic Disease Often Inherited

• Cigarettes and Vices • Cancer

Q. Will you please discuss polycystic disease of the kidney?
A. This is a congenital condition, meaning that it is present at birth. Both kidneys are usually affected. They are enlarged and contain many (poly-) sac-like structures (cysts) which crowd out normal kidney tissue. The disease often occurs in two or more members of the same family and is frequently handed down from generation to generation. The condition is seldom helped by medical treatment. In some cases, progressive destruction of the kidney may be delayed and pain relieved by rupturing or draining all accessible cysts. Whether to operate is an individual problem.

Q. Does cigarette smoking have any effect on varicose veins?
A. All tobacco contains nicotine, and it is mostly this part of tobacco that acts on the body. The



action of nicotine is complicated and unpredictable so that the effects on any given person will vary. For example, smoking may cause constriction of blood arteries in some people, dilate these vessels in others, or cause neither dilation nor constriction in still others. Because of this varied action, a direct yes or no answer can not be given to the question. It would seem logical for people with any sort of blood vessel disease to avoid the possible ill effects of nicotine. The attending physician would, however, be the final judge.

Q. Can it be proved that early detection of breast cancer gives the victim a better chance?
A. Yes. University of Pennsylvania doctors recently conducted a study to determine what effect early detection of breast cancer has on survival. Records of 740 breast cancer patients were gone over in a very thorough fashion. The records showed quite well that early detection (symptoms present less than one month) increased the chance of survival. Until more is known about cancer in general and breast cancer in particular, our strongest defense is early detection.

Bring your Prescriptions to us for prompt service and reasonable prices.



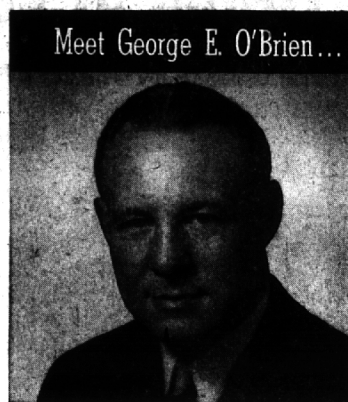
ALWAYS A PLACE TO PARK

MILLS PHARMACY
1740 West Maple Ave. Phone: Midwest 4-5060

Name Bichan Sales Representative

The Rochester Iron & Metal Co., with offices at 3542 Bradford, Birmingham, announces the appointment of Robert C. Bichan, as their Midwest and automotive representative. He will direct sales and distribution of aluminum mill products distributed by the Rochester firm. Bichan, was formerly with William M. Schmidt Associates and previously held the position of automotive industries sales manager with the Kaiser Aluminum and Chemical Sales corporation in Detroit.

Surface mine production of bituminous coal at the 12 leading mines in West Virginia exceeded 1.7 million tons in the first half of 1955, statistics have revealed.



Meet George E. O'Brien...

...a good man to know

George O'Brien is an old "pro" when it comes to securities. His career started back in 1928! His background is his strength—for it includes "putting together" underwritings of new issues and managing syndicates. His broad experience with every type of security was gained by working as a Registered Investment Counselor. With 31 years of experience, he's learned a lot... a lot on how to help people with their investments.

George is highly informed as are all Goodbody representatives. George offers truly competent brokerage advice and service. This is possible because Goodbody's well known and highly respected Research Department keeps him constantly abreast of market facts and possible trends. How about calling him today at:

GOODBODY & CO.
MICHIGAN LIFE BUILDING
N. WOODWARD NEAR 13 MILE
Other Michigan Offices:
PENOBSCOT BLDG. 125 WEST FIRST STREET
DETROIT FLINT
38 National Offices

JUST BECAUSE

Summer is here we have to change our tune a bit—but just because—

(a) You want to rest, golf, swim or travel does not mean that the bugs are going to stop eating. Keep up your weekly or 10-day spraying with a combination spray such as Mc-B INSECT or ISO-TOX.

(b) The grass gets brown does not mean it is dying. If you want it green water it some and use 1 lb. of RAPID GRO to 2000 sq. ft.

(c) It is hot and dry doesn't mean our HOSE is on sale. However, there are a few coils of ½ inch Pressure Mesh Hose at a bargain price.

(d) It is an "off season" you can buy our LOANING SPREADERS at a good discount (10% to 20% off the list).

(e) the weeds come up in the gardens is a good reason to cover the beds with BUCKWHEAT HULLS or PEAT MOSS and quit weeding until next year.

(f) crabgrass is appearing in your lawn is no reason you should despair. You may kill it with SPRAYS:—

DUPONT (Liquid) Amine Methyl Arsenate
ORTHO (Liquid) Amine Methyl Arsenate
CRAB-NOT (Powder) Potassium Cyanate
CRAB-NOT SPECIAL (Powder) Potassium Cyanate plus 2,4-D
SPREADER:—
VAUGHAN'S K.O.—Sodas plus 2,4-D

(g) your grill is giving you fits don't give up. We have a dilly that we will sell for \$126.00—original price \$179.95. And a \$59.95 job for \$42.00. All other grills (except the Hi-Lo) are 20% off list until September 1st, 1959.

(h) your garden and lawn are over or under-watered is no reason why this condition should continue. Supply yourself with a SOIL MOISTURE GAUGE. It tells when and how much to water. In this vein of Science Products there is available also:

Sudbury Soil Test Kit
Sudbury Acid Test Kit
Rainfall Gauge
Wind Direction and Speed Indicator
Sun Dials

(i) your garden lacks an accent or focal point is probably due to the fact that you have not seen the lovely stone and lead bird baths, fountains, figures, pools, etc., at our shop patio.

(j) we would like to change our decor and get some of our money back. Our exquisite RATTAN FURNITURE (5 pieces from Hong Kong is ON SALE at 25% off the list.

(k) it is a magnificent sunny day at Grand Bend is the reason we are terminating this writing at this precise moment and go swimming.

"B. Cause"

McCLELLAN-BALL CO.
YARD GARDEN SUPPLIES KENNEL FARM
BIRMINGHAM, MICHIGAN
Phone MI 4-4133 850 S. Woodward

Last 9 Days **Dickinson's** Last 9 Days

SEMI ANNUAL SALE CLOTHING

Summer & Year 'Round SUITS

Values to	\$50 ⁰⁰	Now	\$38 ⁷⁵
Values to	\$60 ⁰⁰	Now	\$48 ⁷⁵
Values to	\$70 ⁰⁰	Now	\$58 ⁷⁵
Values to	\$85 ⁰⁰	Now	\$68 ⁷⁵
Values to	\$95 ⁰⁰	Now	\$78 ⁷⁵

SPORT COATS

\$39 ⁵⁰	Now	\$29 ⁷⁵
\$50 ⁰⁰	Now	\$39 ⁷⁵
\$65 ⁰⁰	Now	\$49 ⁷⁵

SAVINGS ON ALL TOP COATS

MEN'S FURNISHINGS

SPORT SHIRTS				COLORED DRESS SHIRTS			
\$4 ⁰⁰	Now	\$3 ⁰⁰		\$4 ²⁵	Now	\$3 ¹⁹	
\$4 ⁵⁰	Now	\$3 ³⁸		\$4 ⁵⁰	Now	\$3 ³⁸	
\$4 ⁹⁵	Now	\$3 ⁷¹		\$5 ⁰⁰	Now	\$3 ⁷⁵	
\$5 ⁹⁵	Now	\$4 ⁴⁶		\$5 ⁹⁵	Now	\$4 ⁴⁶	
\$6 ⁹⁵	Now	\$5 ²¹					
\$7 ⁹⁵	Now	\$5 ⁹⁶					
\$8 ⁹⁵	Now	\$6 ⁷¹					
\$10 ⁰⁰	Now	\$7 ⁵⁰					

BATHING SUITS 25% Off
BERMUDAS 25% Off
Summer PAJAMAS 25% Off

Tropical SLACKS

\$12.95 Values	Now	\$10.75
\$16.50 Values	Now	\$13.75
\$19.50 Values	Now	\$15.75

Birmingham
In The Wabash Building

Pontiac
Saginaw at Lawrence