

Open

(Continued from Page 1)

schools expect to gain 841 more pupils, bringing their total attendance to 12,341.

Bloomfield Hills schools are planning on receiving 349 additional students, for a total of 3,309, and Southfield schools estimate an additional 582 students will swell their school population to 6,809.

New Courses

MATHEMATICS and science head up the lists of new courses to be introduced in area schools.

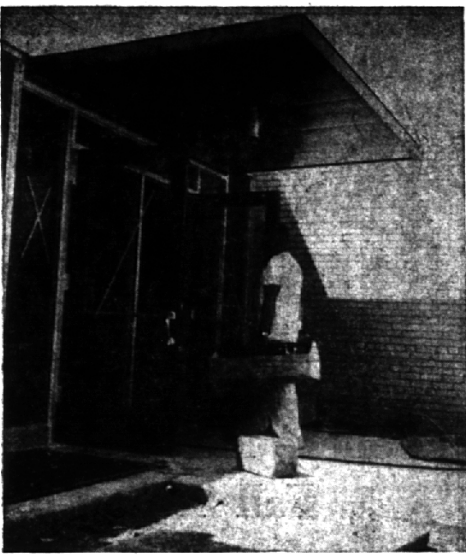
In the science category, Southfield schools are inaugurating a chemistry course for advanced 10th grade students, to enable them to take physics in the 11th grade and a combined course of advanced chemistry and physics in their senior year.

Birmingham schools will introduce a "physical science" course to their 12th grade schedule. The course is for students who want additional science, though they are not science majors. It contains some chemistry and physics.

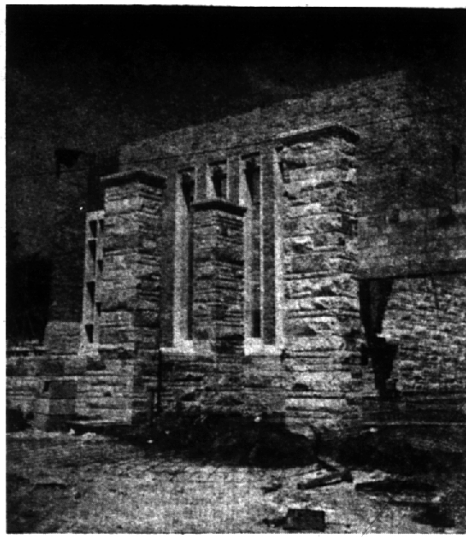
BLOOMFIELD Hills schools are adopting new arithmetic textbooks this year, a series utilizing new teaching techniques.

In the Birmingham school system, a junior high math program gives two years of mathematics in one year to advanced sixth and seventh grade students. The program enables the student to begin algebra in the eighth grade.

(For further information on new courses, see other stories in this special section)



Workman Forest McCleary enters the doorway at the new St. Regis elementary school. Work on the school is rushing to completion in time for the fall term when the building will open for the first four grades.



The three columns that will be part of the outer wall of the administrative area of the Rice high school for boys stand alone in front of the partially completed chapel. The building, slowed because of the steel strike, is scheduled to be opened for use in the fall of 1960.

Capacity of Parochial Schools Increases

New schools and additions to several others are expanding the capacity of the Birmingham area parochial schools this fall.

The new Marion high school for girls at Lahser and Lincoln will open for ninth graders this fall augmenting ninth grade classes in other area Catholic schools. One grade a year will be added until the four grade curriculum is complete.

The convent and one classroom wing will open in September. Other parts of the school including a gymnasium, a library, music rooms, an auditorium and cafeteria are scheduled for a later completion date.

The high school is under the jurisdiction of St. Mary's college and academy, Monroe. Teachers in the school will be members of the Servants of the Immaculate Heart of Mary order under the direction of Sister Thomas Aquinas, principal.

Diehl and Diehl associates, 128 Madison, Detroit, are the architects for the project and the Brennan Co., 4649 Humbolt, is the general contractor.

The St. Regis elementary school, a mission of the Holy Name parish, is scheduled to open next month for grades one through four adding a grade each year until the eight grades are complete.

Originally planned to be called St. Victor's the new yellow brick elementary school is located near

the high school site.

The Immaculate Heart of Mary Sisters who will teach in the school will reside at the Marion high school convent this year.

Diehl and Diehl are the architects for the building. E. N. Hewitt is general contractor.

Brother Rice high school for boys located near the Lahser and Lincoln sites of St. Regis and Marion high school will open in the fall of 1960.

Contractors said there is a possibility that one or two of the wings may be ready for use by February.

The school will be run by the Christian Brothers of Ireland and is named after the founder of that order.

The school buildings with split stone facing and cut stone trim will cost an estimated \$980,000. Classroom areas will have window walls of glass and porcelain panels and exposed steel framing.

Charles A. Valentine associates, Marysville, are the architects. General contractor is the J. A. Ferguson company.

St. Columban elementary school, 1775 Melton, will add the fourth grade this year and put into use two more rooms.

The school began last year with three grades and plans to add one grade a year until the eight grades are complete.

The new classes will add 80 pupils and bring the total enrollment

in the school to approximately

250. One sister and one lay teacher will be added to the staff.

The school is planning on the addition of nine classrooms in the near future.

St. Hugo of the Hills, on Opdyke road, Bloomfield Hills, is presently adding several classrooms to handle increased enrollments.

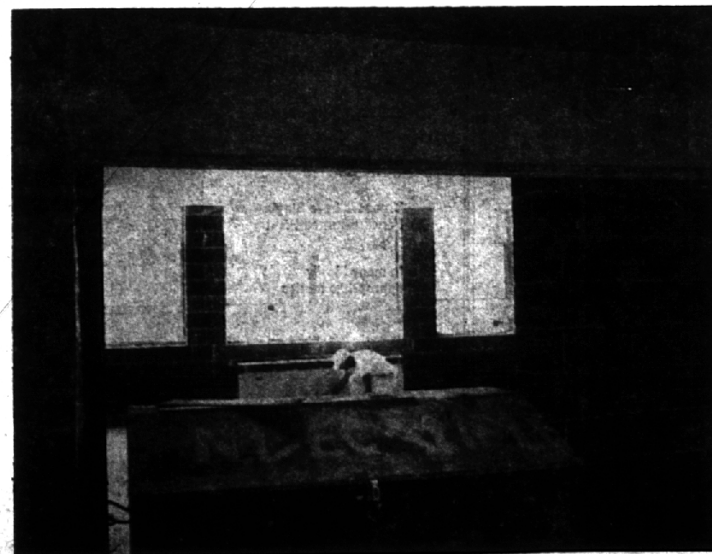
Construction began in March and is scheduled to be completed by January although it is hoped that some classrooms may be ready for use during the fall term.

Walter H. Desimile and Son are handling construction. The architects are the Walkely-Kushner associates of Detroit.

St. Bede's elementary school, grades one through seven in the Lathrup-Southfield area will have one additional sister on its staff and four lay teachers Mary Robbins, Joan Calvert, Rose Marie Houle and Shirley Eriksen.

Holy Name school, 680 Harmon, and Our Lady Queen of Martyrs, 32460 Pierce, the other two Catholic schools in the area report no new construction or additions.

Our Shepard Lutheran elementary school, 2225 E. 14 Mile road is dividing a larger classroom into two smaller rooms to add a fourth class to accommodate their 175 pupil enrollment. Richard Licht has been hired to teach the new class.



Painter Felix Lavery applies his brush to a partially finished room in the Marion high school classroom wing. This wing, scheduled for a later completion date, the convent and chapel will be open in time for classes this fall. Other wings including a music room, gym and cafeteria are scheduled for a later completion date.



at ease with fall
19.98

Your favorite in a 100% wool, miniature Herringbone tweed. To take you everywhere . . . whether in town, country or campus. Stone green, brown or grey. 8-16.

Phone and Mail Jordan 6-8777

Kay Baum